

KOHL'S

BUILDING AMAZING PRODUCT

MANAGING

STYLE

COMPLEXITY

**Multiple Sizes, Fabrics,
Vendors, & Factories in
OnePLM**

APRIL/2024



GSPS

Technical Design

TOPICS

- ❑ Style Complexity Overview [Page 3](#)
- ❑ Managing Size Extensions [Page 8](#)
- ❑ Managing Multiple Fabrics [Page 17](#)
- ❑ Managing Multiple Factories [Page 27](#)
- ❑ OnePLM Fit Evaluation [Page 32](#)
 - ❑ Fields by KTD/CTD Level
 - ❑ Internal Sample Rejection
 - ❑ Sample Options
 - ❑ 3D Samples



STYLE COMPLEXITY OVERVIEW

SILHOUETTE Base Style ID



Base Style ID:
 Initial tech pack is created with the core base size.

***Related Styles: Some silhouettes share the same fit with a variation in sleeve length or inseam length or a regular version vs adaptive version, or market/climate version under a separate base style ID #.**

SIZE EXTENSION MULTIPLIER POM Page Size Indicator



Size Extensions: Additional sizes that are fit separately from the base size.

These may include Plus, Big Man

***Size Conversion:** Additional sizes that are fit separately from the base size. These are built with a conversion table from the base size.

These may be further broken down into Petite Curvy, Plus Curvy, Plus Straight, ect.

***Grade Extension:** Sizes turned on within the base size grade table. These sizes are not fit separately.

Examples: Girls 7-16 Plus, Junior Plus, Kids Slim & Husky, Men's Tall, Women's Reg

FABRIC MULTIPLIER Material Drop Down



Core Fabric: Base fabric that counter sample is fit in. May include multiple fabrics with the same properties, such as solid, print, heather, graphic. All applicable fabrics will be included on the same POM page.

Additional Fabrics are broken out when the fabric properties are not the same as the base fabric.

Differences in fabric construction, fiber content, weight, drape, or stretch

The POM page includes the material ID for each fabrication.

VENDOR MULTIPLIER Multiple COP/Factories

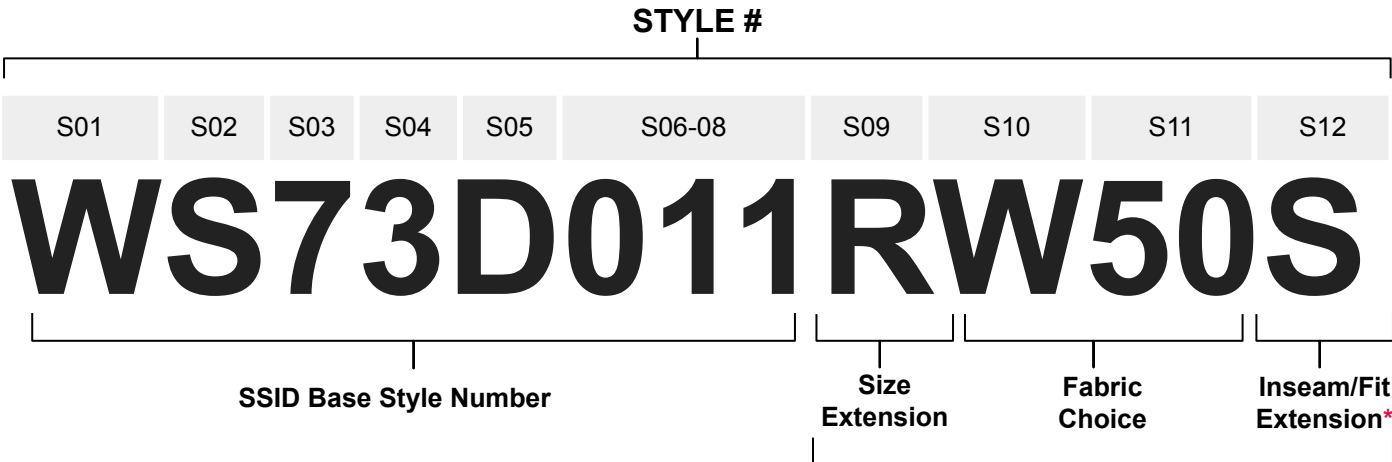


Vendor: One vendor name is used per fit evaluation in OnePLM, however multiple vendors may share the same POM page.

If the vendor is producing at multiple factories, or the factory has changed, a new additional fit evaluation for the additional factory will be created at PP Stage.

***Note** it is important that fit and construction details align across all vendors. The customer should not see a difference in the product.

SMART STYLE ID BREAKDOWN



The **SSID** is comprised of:

- **Section 01 (S01)** Department Code
- **Section 02 (S02)** Brand Code
- **Section 03 (S03)** Last digit of year
- **Section 04 (S04)** Season Code
- **Section 05 (S05)** Category Code
- **Section 06-08 (S06-08)** Three Digit Unique style ID #
- **Section 09 (S09)** Size/Fit Code
- **Section 10 (S10)** Development Choice - solid, print, wash
- **Section 11 (S11)** Fabric or wash choice #
- **Section 12 (S12)*** Special Fit/Inseam Code

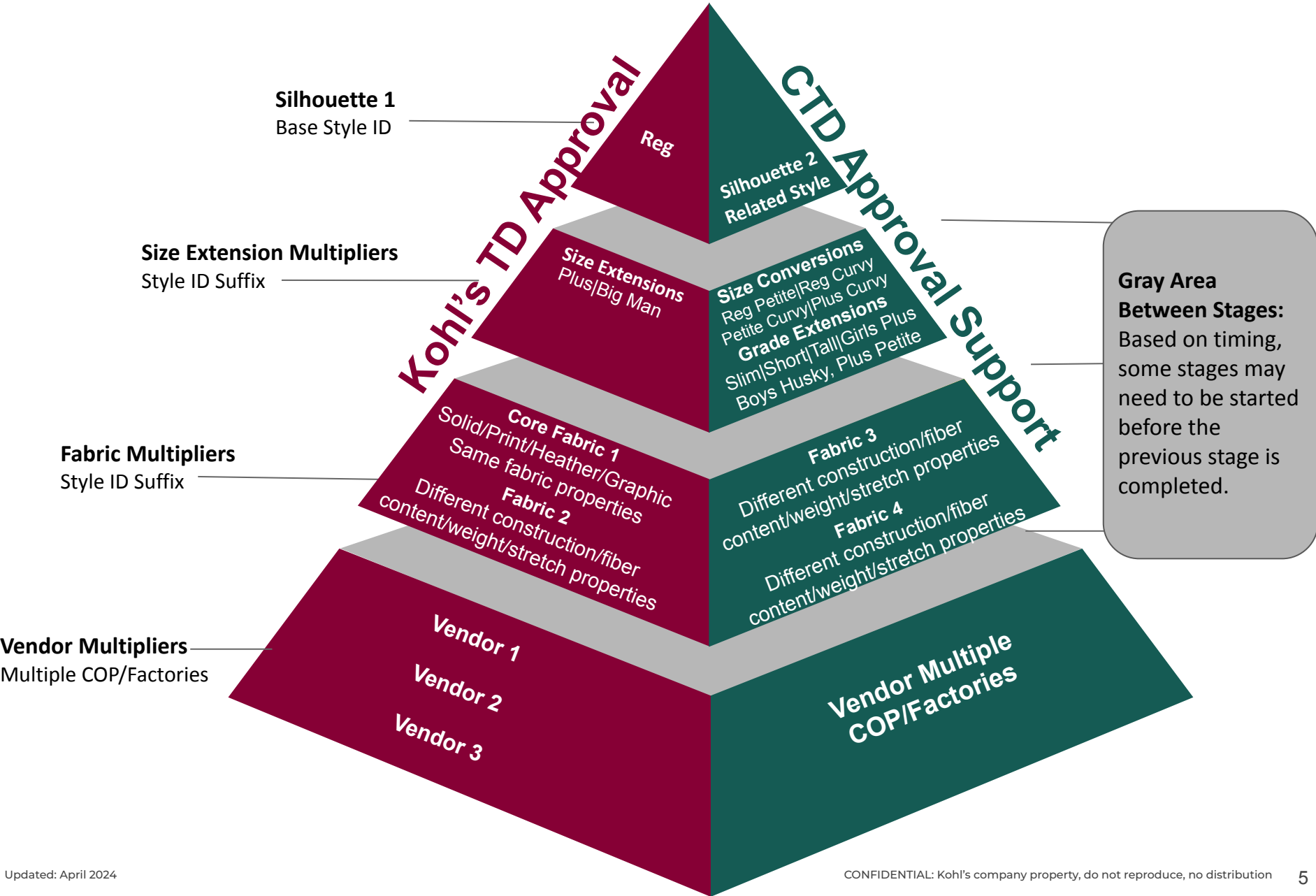
SIZE EXTENSION CODES	
A	Adaptive
B	Big (Mens), Baby Boy
C	Regular Curvy
D	Infant
E	Petite
F	Petite Curvy
G	Girl/Boy, Baby Girl
H	Husky
I	
J	
K	Toddler
L	Plus Petite
M	Plus Tall
N	Neckwear
P	Plus
Q	Plus Curvy
R	Regular
S	Slim
T	Tall (Mens)
U	Unisex
V	Plus Straight
W	Plus Petite Straight
X	Big Men Tall
Y	Womens Plus Petite Curvy/Mens
Z	Extra Slim
	Other/No Size

Suffix

INSEAM/FIT EXTENSION CODES	
R	Regular
S	Short
L	Long
T	Tall

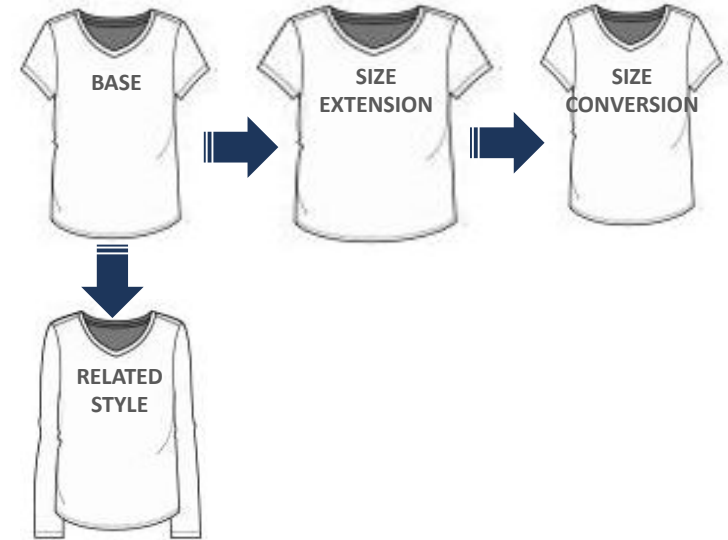
**Inseam/Fit Extension is only used when it applies to a style that offers length options. Not all style ID #s will include this character*

STYLE COMPLEXITY OVERVIEW



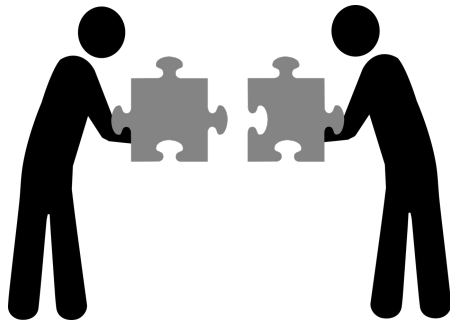
WHY IS PLANNING FIT SAMPLE SUBMIT WORKFLOW IMPORTANT?

1. Information from the previous sample can be applied to the next sample round.
2. Avoids bottlenecking the sample room, the CTD, and the KTD.
3. Avoids unnecessary sample rejections/not approved samples.



WHAT IF THERE IS NOT ENOUGH TIME TO ALLOW THE PREVIOUS STAGE TO BE APPROVED BEFORE REVIEWING THE NEXT STAGE?

Partner with the KTD to understand and prioritize together to ensure an efficient workflow;



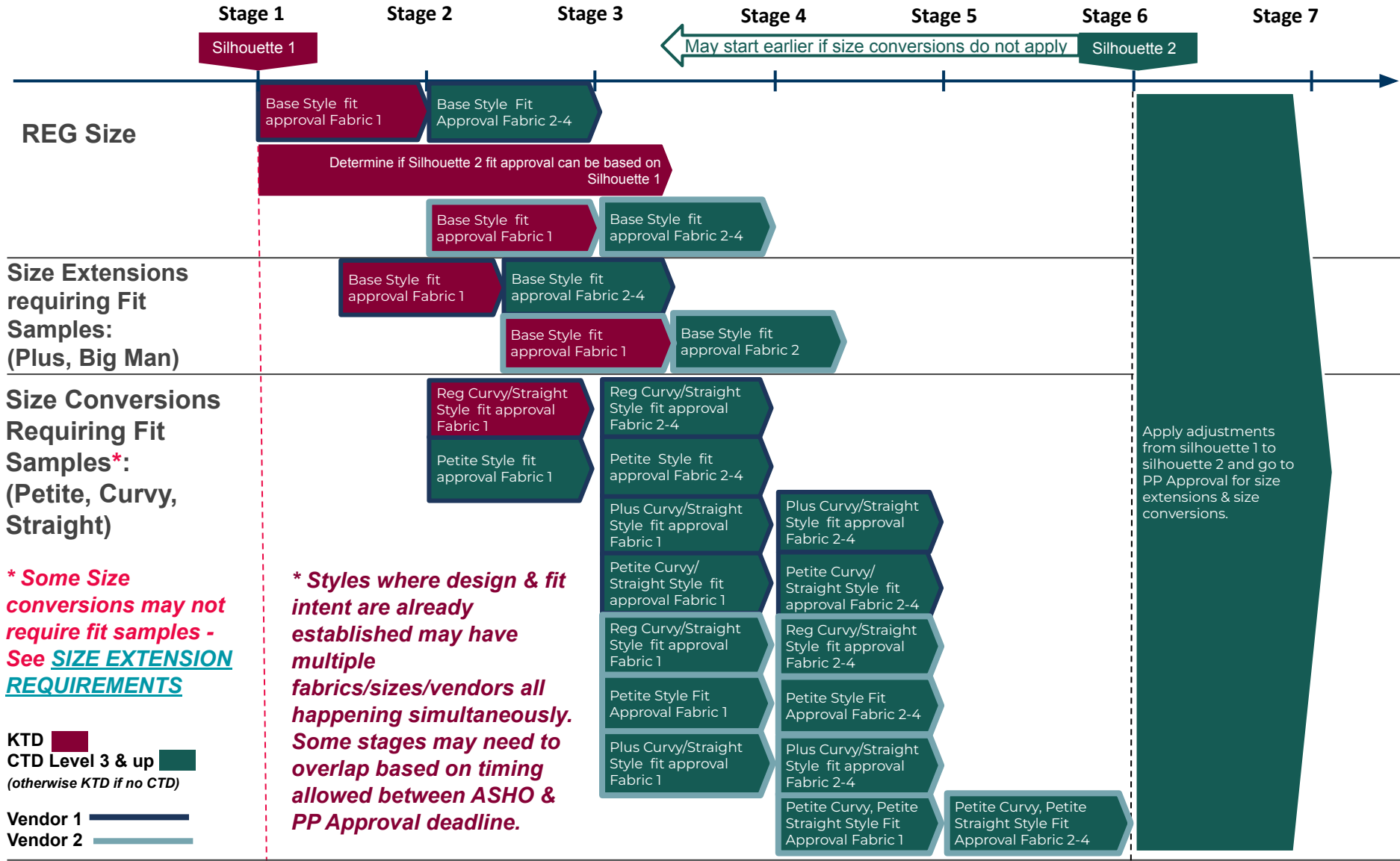
- Review which fabrics need to be fit/evaluated vs. which do not.
- How can we strategize together to ensure production can begin on time?
- Are there other options that can be used?
- Is 3D an option to evaluate some of the extended sizes?

ROLE OF THE CTD: CTD Level 2 & 3 are critical to the success of this process!

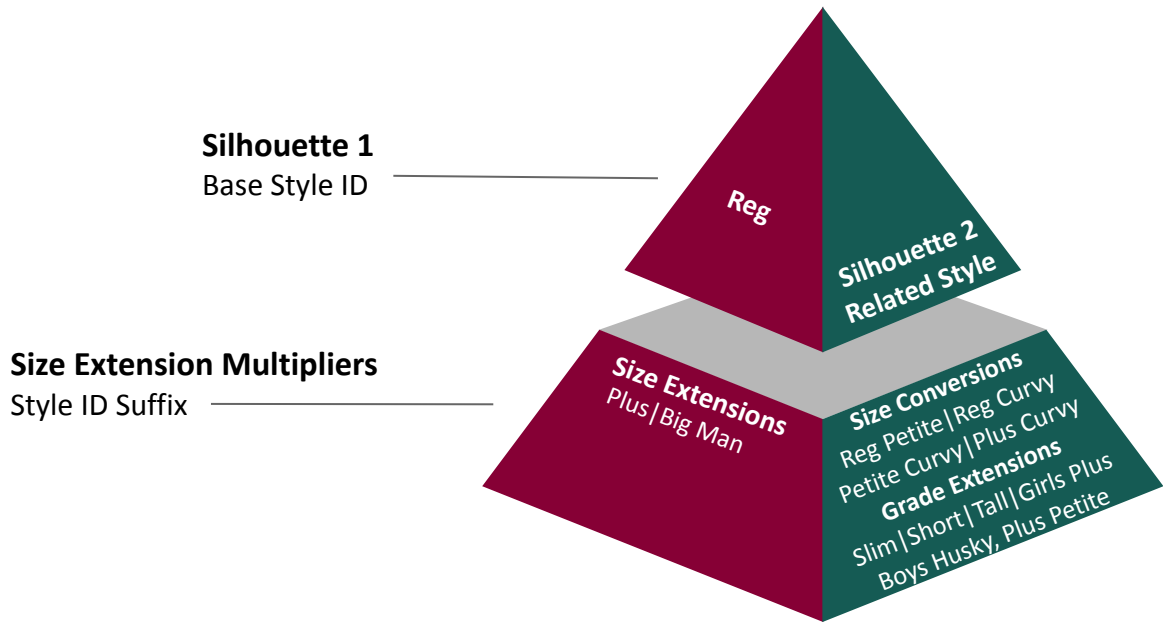
Without the CTD support in approvals of multiple fabrics, sizes, and PP samples, the approval process will take much longer. Kohl's is dependent on our vendor partners to build a strong CTD support system to ensure we can stay on time for the approval of the subsequent fabric/size variations after the initial sample is approved.

STYLE COMPLEXITY OVERVIEW

PLANNING FIT SAMPLE SUBMIT WORKFLOW - NEW STYLE*



MANAGING SIZE EXTENSIONS



MANAGING SIZE EXTENSIONS

SIZE EXTENSION REQUIREMENTS

KTD may request Fit samples to verify conversions with **new vendors, exaggerated styling, or new unknown fabrications.**

Category	Size	Fit Sample	PP Sample	Procedure
Women's	Petite (Same styling as Reg w/o exaggerated style details) Petite Curvy	⊘	⊘ submit converted pattern comparison to reg pattern to KTD or CTD Level 3 ✓ Vendors w/ only CTD Level 1 may be required to submit PP sample on select style after converted pattern is approved.	See Women's Extended Size Process <i>*Extended sizes only need to be verified with Designer for aesthetic intent if styling is exclusive, or if additional seaming, darting or styling details need to be added to accommodate the extended size marker that alters the design aesthetic.</i>
	Petite w/ exaggerated style details	✓ Submit to confirm if conversion adjustment is needed by KTD or CTD Level 3	✓	
	Plus (Same styling as Reg)	✓	✓	
	Curvy/Straight (Reg & Plus)	⊘ submit converted pattern comparison to reg pattern to KTD ✓ New unknown fabrics: Fit sample may be required	✓	
	Short/Long/Tall	⊘	⊘	
	Petite/Plus Exclusive	✓ Fit w/ Design team*	✓	

MANAGING SIZE EXTENSIONS

SIZE EXTENSION REQUIREMENTS

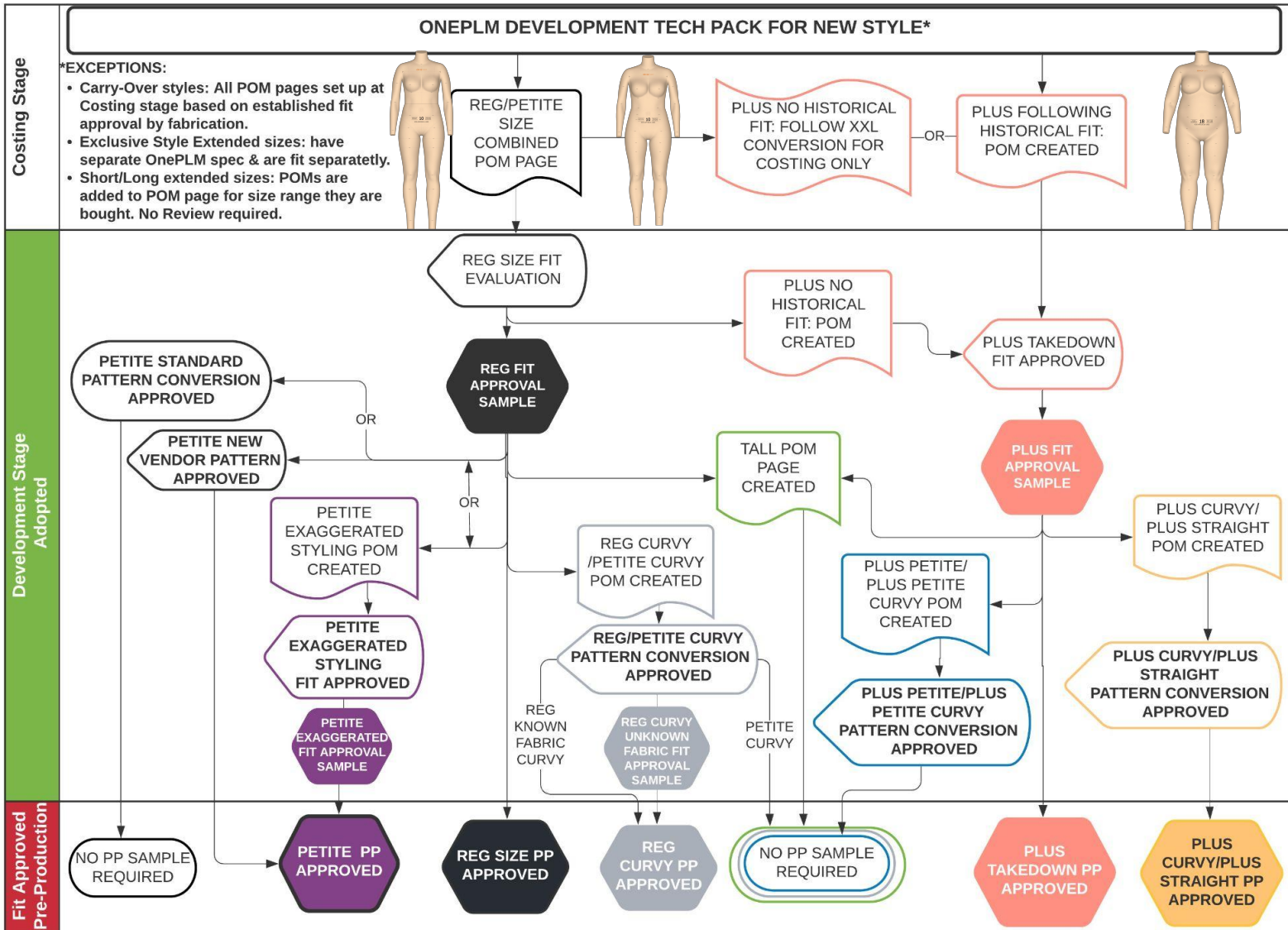
Category	Size	Fit Sample	PP Sample	Procedure
Young Women's	Plus / Slim (Same styling as Reg) Short/Long/Tall	⊘	⊘	Pattern is mathematically converted from Approved Reg. pattern.
	Plus w/ exaggerated style details	✓ to confirm if conversion adjustment is needed	✓	Plus pattern is mathematically converted from Approved Reg. pattern. New silhouettes with exaggerated styling details may be verified by KTD or CTD.
	Curvy (Reg & Plus)	⊘ submit converted pattern comparison to reg pattern to KTD ✓ New unknown fabrics: Fit sample may be required	✓	Curvy pattern is mathematically converted from Approved Reg. pattern and the converted pattern is verified at fit stage before proceeding to PP sample.
Boy's 8/20 Girls 7/16	Plus/Husky/Slim Short/Long/Tall	⊘	⊘	Pattern is mathematically converted from Approved Reg. pattern.
Men's	Big Man (Same styling as Reg)	✓	✓	
	Short/Long/Tall	⊘	⊘	Pattern is mathematically converted from Approved Reg. pattern.
Little Kid's	Base size 6	✓	✓	Little Kid size 6 fit first if Toddler size does not ship before Little Kid's sizing
	Slim/Husky	⊘	⊘	Pattern is mathematically converted from Approved Little Kid pattern.
Toddler	Size 3T (Same styling as Little Kid)	✓	✓	Pattern is mathematically converted from Approved Little Kid size 6 pattern and verified in fit.

MANAGING SIZE EXTENSIONS

For more detail, click on link:
[Women's Extended Size Process](#)

Women's Fit Approval Workflow for Extended Sizes Technical Design

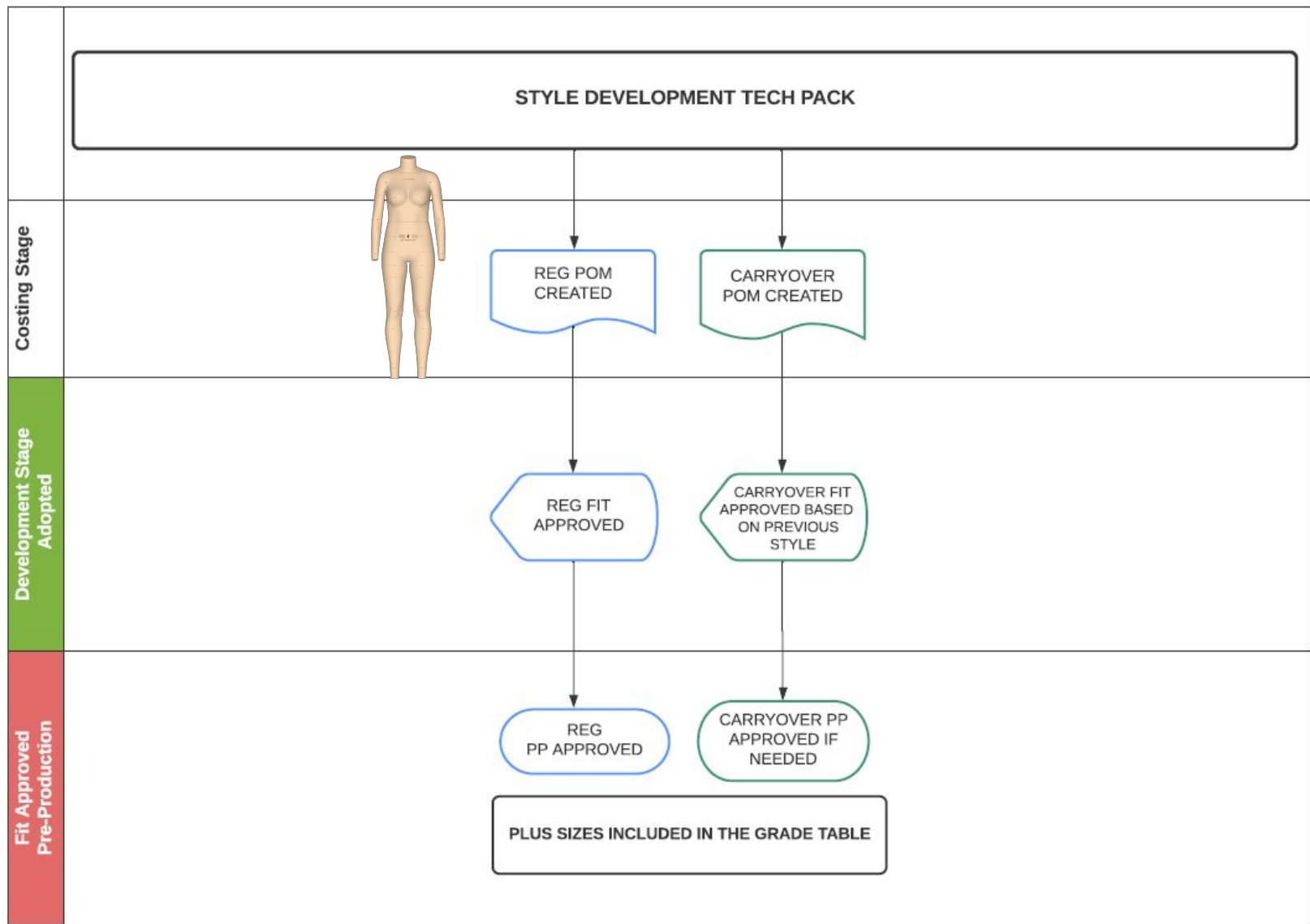
Effective beginning SP22



MANAGING SIZE EXTENSIONS

Young Women's/Junior's Fit Approval Workflow for Extended Sizes

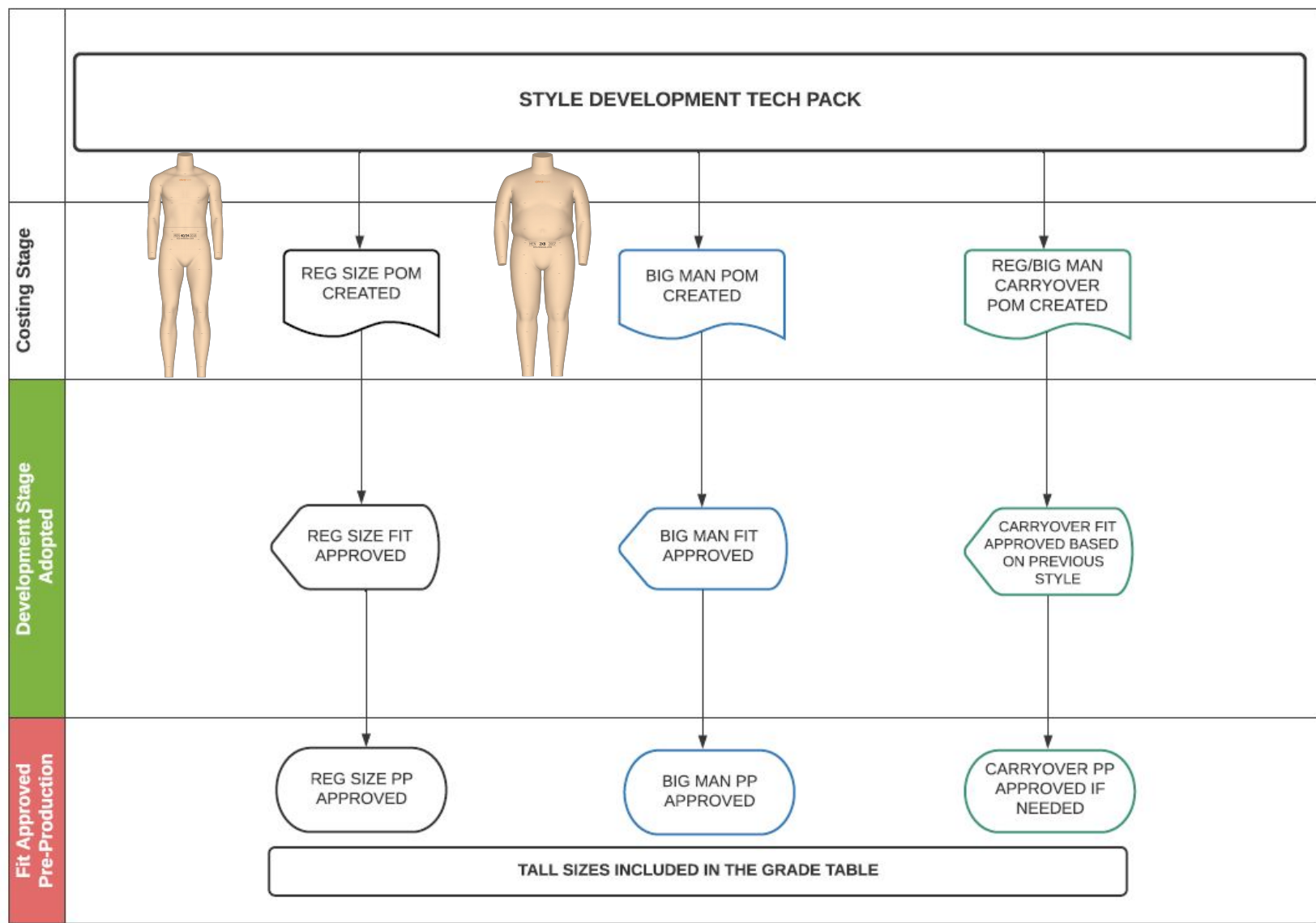
Technical Design



MANAGING SIZE EXTENSIONS

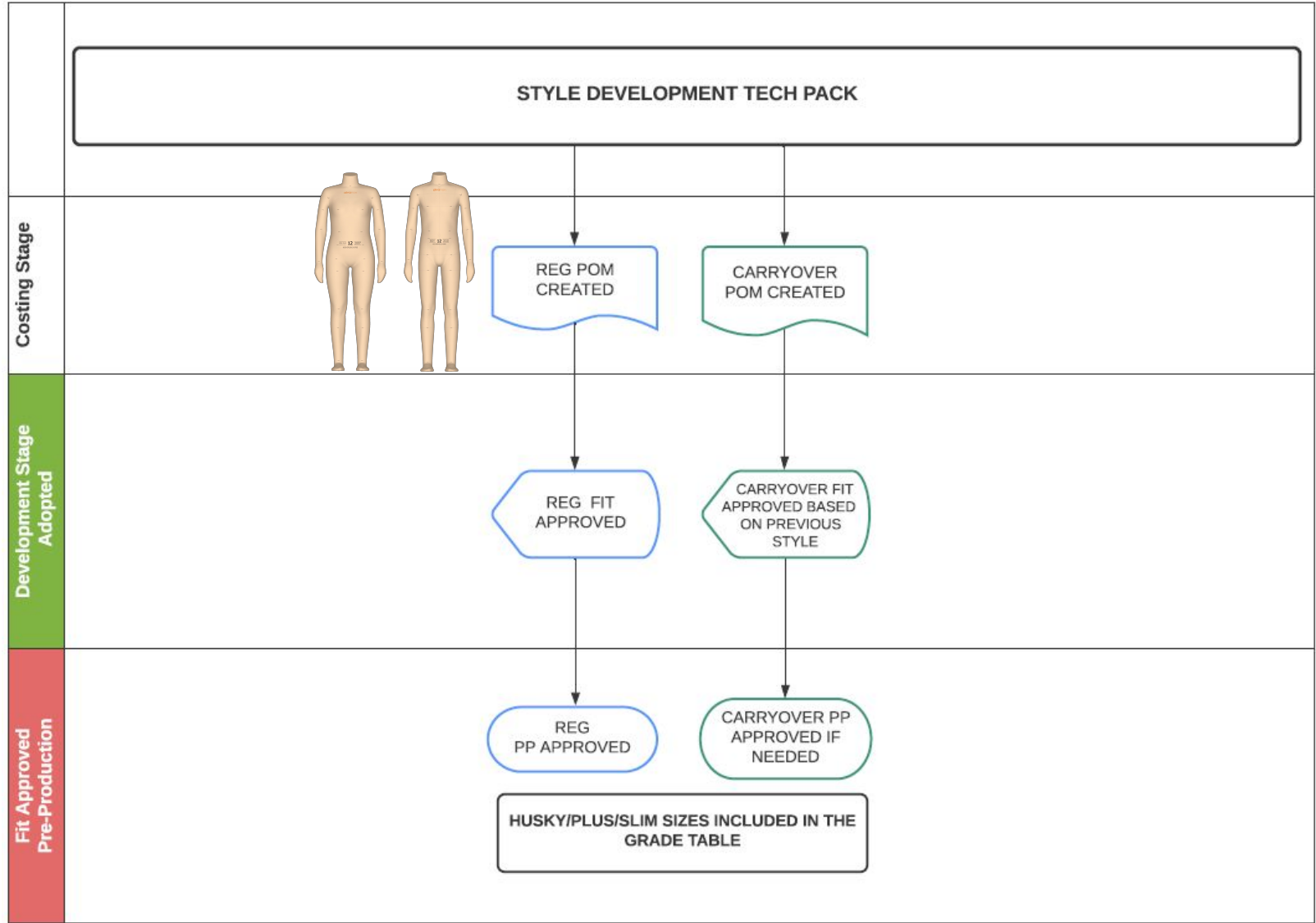
Men's Fit Approval Workflow for Extended Sizes

Technical Design



MANAGING SIZE EXTENSIONS

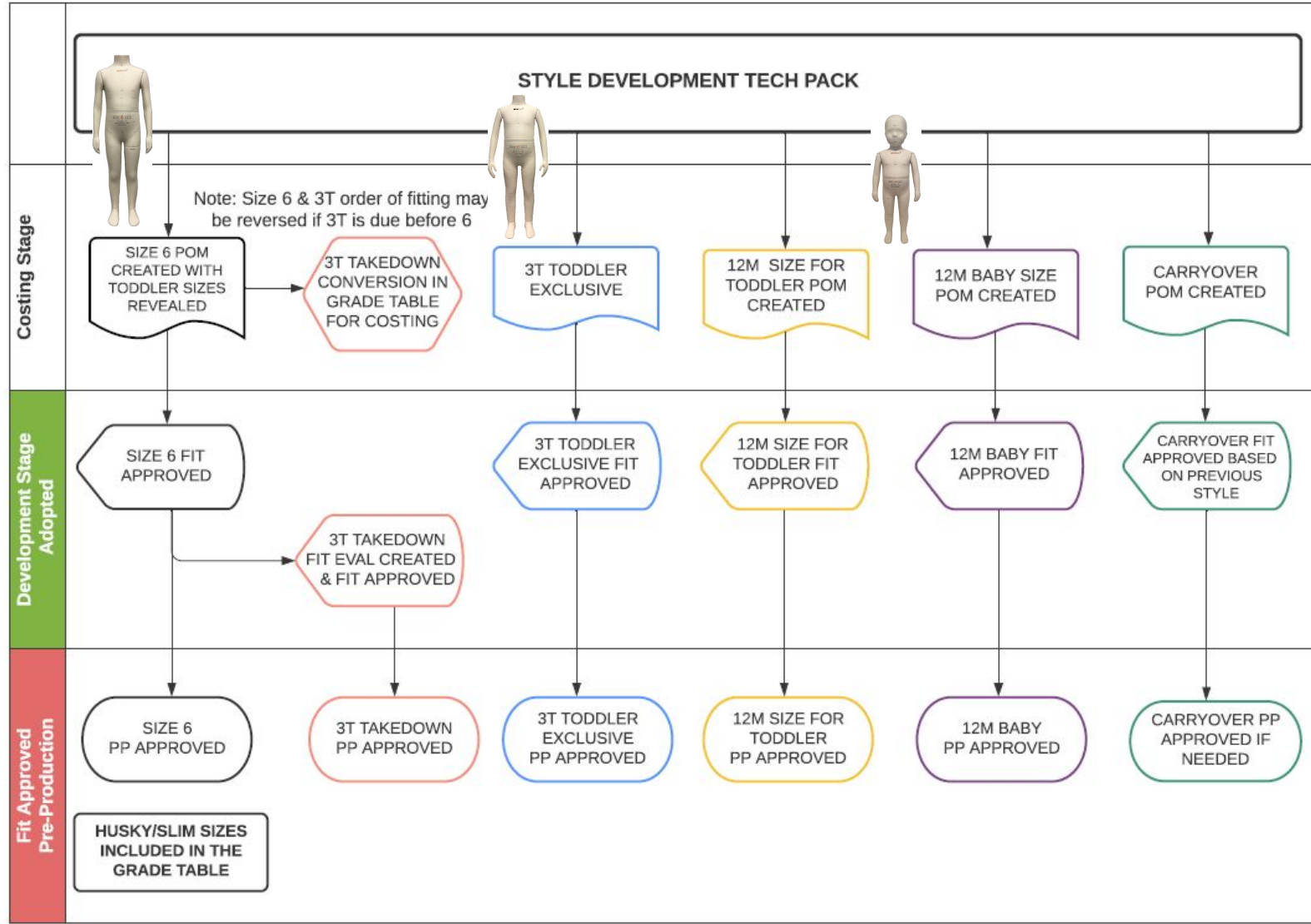
Big Kids' Fit Approval Workflow for Extended Sizes Girls 7-16, Boys 8-20 | Technical Design



MANAGING SIZE EXTENSIONS

Little Kids' Fit Approval Workflow for Multiple Size Ranges

Technical Design



ONEPLM EXAMPLE - EXTENDED SIZE FIT EVALUATION

CTD INITIATED FIT EVALUATION FOR SPECIAL SIZE

Fit Evaluation: 94825

Overview Attachments Change Tracking 3

Fit Sample	Size	Sample #	Sample Type	Fit Status
All	10			
Sample 4	10	918489	PRE-PRODUCTION SAMPLE	APPROVED 4
Sample 3	10	910797	FIT SAMPLE	APPROVED 3
Sample 2	10	908951	FIT SAMPLE	REJECTED 2
Sample 1	10		COUNTER SAMPLE	NOT EVALUATED 1

Petite Spec Fit Evaluation Example

Evaluation Information

Agent: LI & FUNG TAIWAN Vendor: ECLAT TEXTILE CO., L... Factory: SON HA GARMENT J...

Adopted Style Handoff: 07/30/2019 PP Deadline: 10/01/2019 UM: IN

Number Format: Fraction POM Page Description: E.H/H1.100 POLYJERSEY

Created On: 2019-09-02 02:58:03 Modified on: 2021-01-12 16:42:19 Fit Workflow Alert: 63

Sample Information

Fit Sample: Sample 4 Sample Type: PRE-PRODUCTION SA... Fit Status: APPROVED

Reason Code:

Date Received: 09/20/2019 Ownership: CTD Decision Date: 09/20/2019

Measurer 1: MICKIE WONG Measurer 2: Actual Fabric/Material: Yes

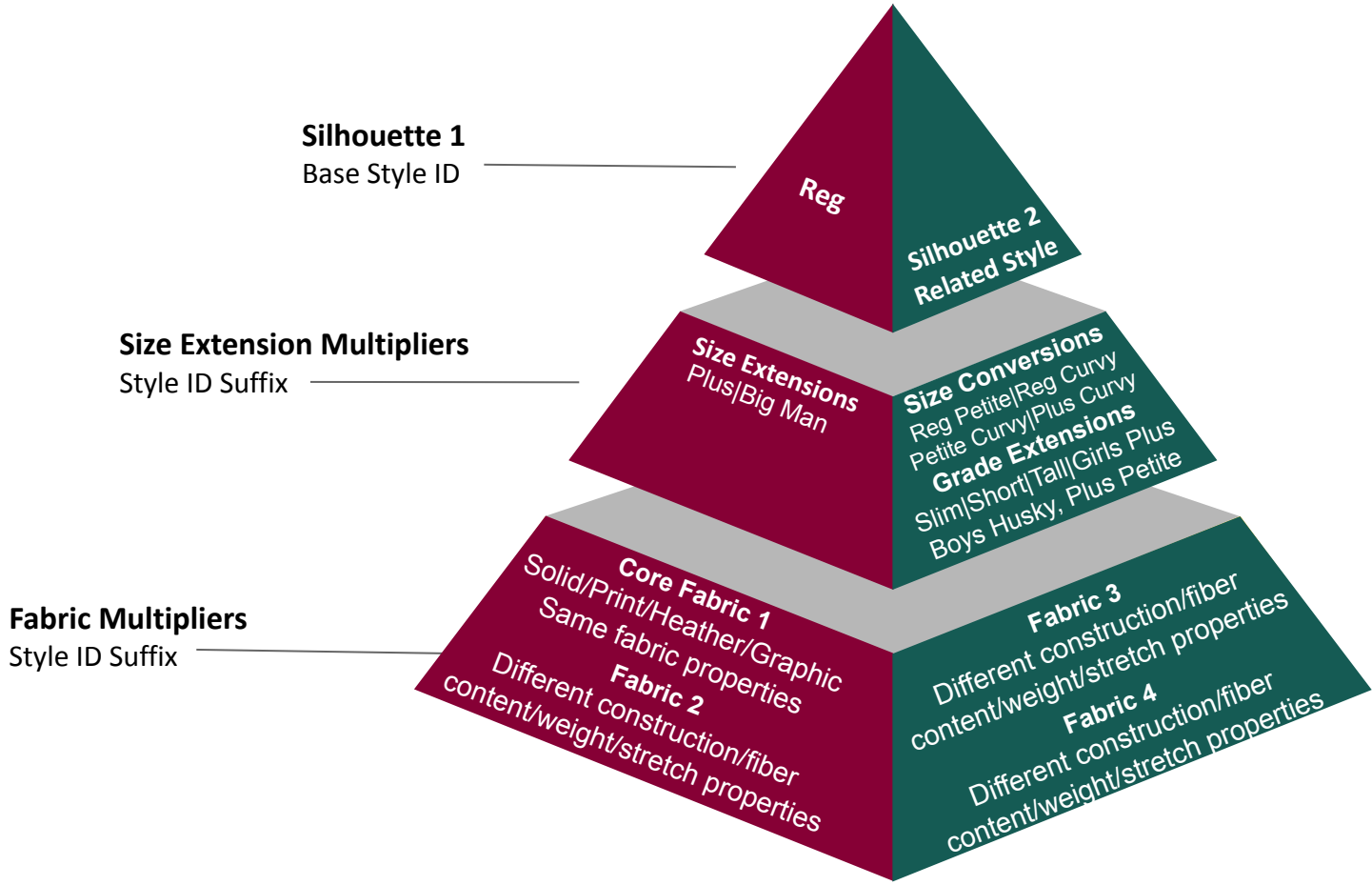
Actual Trim/Hardware: Yes Block/Last Used: Yes Actual Outsole: --Select--

Date Fit: 09/20/2019 Fit With:

If CTD needs to create a fit evaluation to evaluate a new fabric or special size sample:

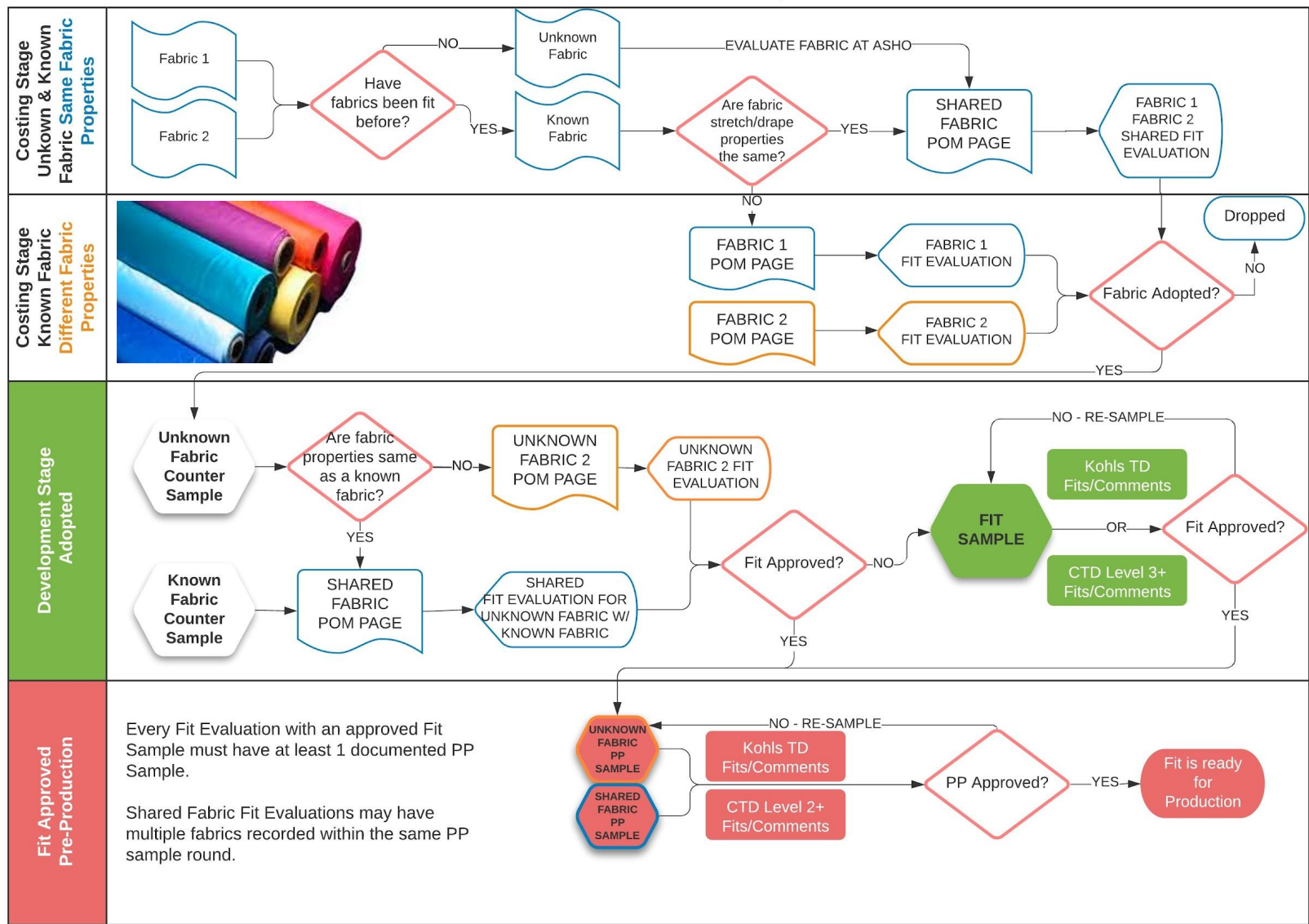
1. Confirm w/ KTD no Fit Evaluation already exists. *(CTD cannot 'see' all Fit Evaluations if the Agent and Vendor field are still blank in OnePLM).*
2. Follow [Create Fit Eval](#) instructions in CTD OnePLM Manual.
3. On Sample 1; fill in Sample Type = COUNTER SAMPLE, and Fit Status = NOT EVALUATED (unless fit has previously been approved on a different Fit Evaluation (carry-over style), then COUNTER SAMPLE status = APPROVED).
4. Adopted Style Handoff date is the day you were advised to create the style.
5. Update POM Page Description field with correct size/fabric information (see [POM Naming Convention](#))
6. Fill in all [Required Fields](#) on the Fit Evaluation
7. [Initiate Sample](#) round for Sample 2.

MANAGING MULTIPLE FABRICS



MANAGING MULTIPLE FABRICS

Multiple Fabrics Fit Approval Workflow Kohls Technical Design



ONEPLM EXAMPLE - MULTIPLE FABRICS ON SAME POM PAGE

Style: WT94A105

Overview Design Intent Constructions Instructions Standards **POM** Samples BOM Attachments Events >>

More Actions... Save

PLM Points of Measurement

View Fit Evals Create Fit Eval Add Points of Measure Copy POM Code(s) Change Size Range Change Tolerance Calculate Specification Multi Window POM Report Delete POM Code(s) Copy Grading

Points of Measurement < 1 2 3 4 > Go To R.H-H1-N-P-JERSEY.ECLAT

- R.H-H1-N-P-JERSEY.ECLAT
- R.XH.XH1-MELANGE JERSEY-WILLBES
- E.H-H1-N-JERSEY.ECLAT
- E.XH-JERSEY.WILLBES

Base Style Information

Image L

Description PERFORMANCE TEE

Development Stage DEVELOPMENT Style Status CONFIRMED Technical Designer ASHLEY NUNEZ Designer JENNIFER CEPLUCH

Tolerance Information

Page Sort 1

Create Date 08/19/2020

POM Page Description R.H-H1-N-P-JERSEY.ECLAT

Tolerance Model LADIES TOPS ALPHA

Grading Information

Size Range LADIES (000-20) REG&PETITE Grading Size 10

Grading Method Cumulative UM

Grading Model Name LADIES Number Format Fraction

POM Material

Material 1	Material 2
68204 K 100 POLYESTER JERSEY 160 GM2	87469 K 100 POLYESTER INTERLOCK 145.00 GM2
Material 3	Material 4
79830 K 100 POLYESTER JERSEY 135.00 GM2	
Material 5	Material 6
Material 7	Material 8

See CTD OnePLM Manual: [POM Naming Convention](#) for more details on the POM page naming convention.

All fabrics* with similar performance properties can share the same POM/spec page.

Evaluation Criteria for separating fabrics on a different POM page:

1. The amount of body ease and/or if the fabric stretch properties are being used to fit the garment to the body.
2. The fabric drape and stretch properties (elongation & recovery).

When a new fabric is added to a style, always ask the Kohls TD to confirm the next steps in reviewing the fabric for fit.

**The Kohls TD may ask to see performance testing of the new fabric compared to current core fabric, or to see a fit or reference sample in the new fabric to help them make their decision.*

ONEPLM EXAMPLE - MULTIPLE FABRICS ON SAME FIT EVALUATION

The screenshot displays the 'Fit Evaluation Designer Overview' interface. It includes tabs for 'Overview', 'Attachments', and 'Change Tracking'. Below the tabs are buttons for 'Initiate Sample', 'Update POM Association', 'Open Previous Fit Round', 'Multi Window', and 'Sample Tag'. The 'Fit Evaluation Designer Information' section is expanded, showing 'Parent Information' with fields for Style No (WT94A105), Request No (00616979), Description (PERFORMANCE TEE), Fiscal Season (SP21), Brand (TEKGEAR), Division (ACTIVE WOMENS), Development Stage (DEVELOPMENT), Style Status (CONFIRMED), Ecom Excl (N), Technical Designer (ASHLEY NUNEZ), and Designer (JENNIFER CEPLUCH). A 'Sample Selection' table lists two samples: 'Sample 2' (10 units, 1087531, PRE-PRODUCTION SAMPLE, APPROVED) and 'Sample 1' (10 units, COUNTER SAMPLE, APPROVED). The 'Evaluation Information' section shows Agent (LI & FUNG TAIWAN), Vendor (ECLAT TEXTILE CO., ...), Factory, Adopted Style Handoff (08/19/2020), PP Deadline (11/11/2020), and UM (IN). The 'Sample Information' section shows Fit Sample (Sample 2), Sample Type (PRE-PRODUCTION SA...), Fit Status (APPROVED), Reason Code, Date Received (10/20/2020), Ownership (CTD), and Decision Date (10/23/2020). The 'POM Material' section lists eight materials, with Material 1 (K 100 POLYESTER JERSEY 160 GM2) and Material 3 (K 100 POLYESTER JERSEY 135.00 GM2) highlighted with a red box. The 'POM Page Description' field is also highlighted with a red box and contains the text 'R.H-H1-N-P-JERSEY.ECLAT'.

See CTD OnePLM Manual: [Navigating the Tech Spec Report](#) for the 'Report View' of fabric information in the printed tech spec.

When multiple fabrics share the same Fit Evaluation, which fabric should be used for making the fit sample?

1. The fabric that KTD has requested in their fit comments.
2. If KTD does not have a preference, it should be the fabrication with the largest number of units.
3. The KTD may ask to sample the newest fabric if the other fabrications have been reviewed for fit previously.

Is it OK to have multiple Pre-Production samples on the same Fit Evaluation for multiple fabrics?

1. Only the fabrication that KTD requests for PP needs to be documented in the fit eval.
*This should be the fabric with the largest number of units, or the fabric evaluated in the previous fit rounds.
2. If vendor would like to document a CTD Internal PP sample of the other fabrications/suffix choices, [see page 23](#).

ONEPLM EXAMPLE - FABRICS EVALUATED ON SEPARATE FIT EVALUATIONS - THE FIT EVAL MAY OR MAY NOT SHARE SAME POM SPEC PAGE

Each Fit Evaluation represents a size, fabric, possibly vendor or factory combination that needs to be sampled and approved separately.

Every Fit Evaluation should have either a Counter or Fit sample round with an Approved status and Pre-Production sample round with an Approved status.

Fit Eval: LIST							
▶ Advanced Search: Fit Evaluation							
▼ Fit Evaluation List							
<input type="checkbox"/>	Fit Eval Id ▲	POM Page Description ▼	Size ▼	Fit Sample ▼		Sample Type ▼	Fit Status ▼
<input type="checkbox"/>	107519	P.D1.SEAMLESS.ECLAT	18W	Sample 3		PRE-PRODUCTION SAMPLE	APPROVED
<input type="checkbox"/>	107519	P.D1.SEAMLESS.ECLAT	18W	Sample 1		COUNTER SAMPLE	NOT EVALUATED
<input type="checkbox"/>	107519	P.D1.SEAMLESS.ECLAT	18W	Sample 2		FIT SAMPLE	APPROVED
<input type="checkbox"/>	102735	R.E.D1 SEAMLESS.ECLAT	10	Sample 2		PRE-PRODUCTION SAMPLE	APPROVED
<input type="checkbox"/>	102735	R.E.D1 SEAMLESS.ECLAT	10	Sample 1		COUNTER SAMPLE	APPROVED
<input type="checkbox"/>	102734	R.N1.SPACE DYE.SEAMLESS.ECLAT	10	Sample 1		COUNTER SAMPLE	APPROVED
<input type="checkbox"/>	102734	R.N1.SPACE DYE.SEAMLESS.ECLAT	10	Sample 2		PRE-PRODUCTION SAMPLE	APPROVED

When should Multiple fabrics NOT share the same Fit Evaluation page?

1. If the fabric elongation properties are different (there should be separate POM pages as well)
2. If the fabric is new (unknown) and needs to be evaluated for fit. New unknown fabrics should be documented with an individual fit approval and PP sample.
Example: performance leggings may require every fabric to be evaluated due to fabric performance properties being used to fit the garment to the body. These small variations in performance may impact the fit.
3. Multiple vendors, with different fabrics for each vendor.
4. New vendors to Kohls may be asked to evaluate each fabric separately.

Q: Why isn't a PP Sample required for each fabric?

A: If the multiple fabric/wash choices share the same fabric stretch/elongation properties, then we do not need to evaluate every fabric choice. KTD determines if the different style suffix choices can follow the same spec/POM page. If so, they can also be grouped on the same Fit Evaluation.

Kohl's requires a PP Sample for each Fit Eval, but does not require a PP sample for all of the different fabric/wash suffix choices on the same Fit Eval.

If the fabrics/different suffix choices need to be evaluated, then KTD will create a separate sample request on different Fit Evaluations. Then a PP Sample must be made for each Fit Evaluation request. **Follow direction given by KTD.**

Q: Why would a CTD choose to make an optional PP sample?

A: CTD may want to have a PP Sample in the different suffix choices made as part of their internal process to prepare for production.

CTD Internal PP samples are *not required* to be documented in OnePLM, but they *can* be documented if desired for their own records.

Q: Why shouldn't a new Fit Eval be created for an optional PP sample?

A: Adding additional Fit Evaluations, or adding additional PP Sample rounds affects Kohl's Fit/PP sample reporting.

Since CTD Internal PP Samples are not required and are not handled by KTD, a new Fit Eval/Sample round should not be created.

If there are questions, please ask the KTD.

OPTIONAL PP SAMPLES

CTD Internal PP Sample for Additional Fabric Choices

- ❑ If multiple fabrics are grouped together in one Fit Eval, only one PP sample is required.
- ❑ CTD Internal PP Samples for different variations (fabric, wash, dye effect, etc) can be made as determined by CTD/vendor.
- ❑ If CTD Internal PP Sample is entered into OnePLM, a new Fit Eval should **not** be created.
- ❑ Documentation should be attached in the existing Fit Eval without initiating a new sample round. The documentation will be uploaded to the attachment tab on the same round as the KTD Required PP sample approval.
- ❑ CTD Internal PP Sample should **not** be sent to Kohl's TD for reference.

KTD requested PP sample option



Fabrication: 95/5% Rayon/ Span Jersey, 200 g/m2

Additional fabric option in stripe & heavier weight that shares the same Fit Evaluation as Solid, but CTD may decide to evaluate internally.



Fabrication: 95/5% Rayon/ Span Jersey, 220g/m2

OPTIONAL PP SAMPLES


Combine comments and photos onto one page using the template.

CTD Internal PP Sample

EXAMPLE

SP20 - MN01A002 –ABC Garments - 100% Polyester, 150g/m2

HPS Foldline @ dressform shoulder seam



12/30/2019 – John Doe (CTD Level 2) – PT. Hesed – Green seal # 0003344

GENERAL COMMENTS:
PP APPROVED based on initial pp sample approved on 1/05/2021 (Green seal#001234) by John (Associate CTD). Follow below comments for production.

*** FIT / CONSTRUCTION / WORKMANSHIP:**

1. Overall specs & fit/balance are okay same as fit & initial PP sample approved. Please maintain it for bulk production.
2. Fabric, trim, label placement, color, & quality are checked against standard.
3. Please pay attention to collar and placket; both collar points should be located at the same level. Collar point length/shape should be mirrored based on correct pattern. Upper placket should cover the under placket completely and placket opening edge should be straight.
4. Please ensure button & button hole should be set on correct placement as following correct spec. First button hole placement on current PPS looks far away from CF by 1/16". Please keep monitoring on this during bulk production.
5. Please ensure all the top stitches should be straight and even. Bottom cover stitch along hemline/ sleeve opening should not be too tight. Please maintain it as PPS.

OPTIONAL PP SAMPLE TEMPLATE



CTD Internal PP Sample		
Season - Style # - Vendor - Fabric / Wash Information		
Front View	Side View	Back View
Date - CTD Name/Level - Factory Name - Green Seal#		
GENERAL COMMENTS: PP APPROVED- based on initial PP sample approved on _____ (Green seal # _____) by <u>CTD Name</u> Follow Below Comments for Corrections. Once corrected, proceed to Production.		
FIT/ CONSTRUCTION/ WORKMANSHIP: 1. 2. 3. 4.		

Save file as either .jpg or .pdf before uploading

MANAGING MULTIPLE FABRICS

ATTACHING OPTIONAL PP SAMPLES IN ONEPLM

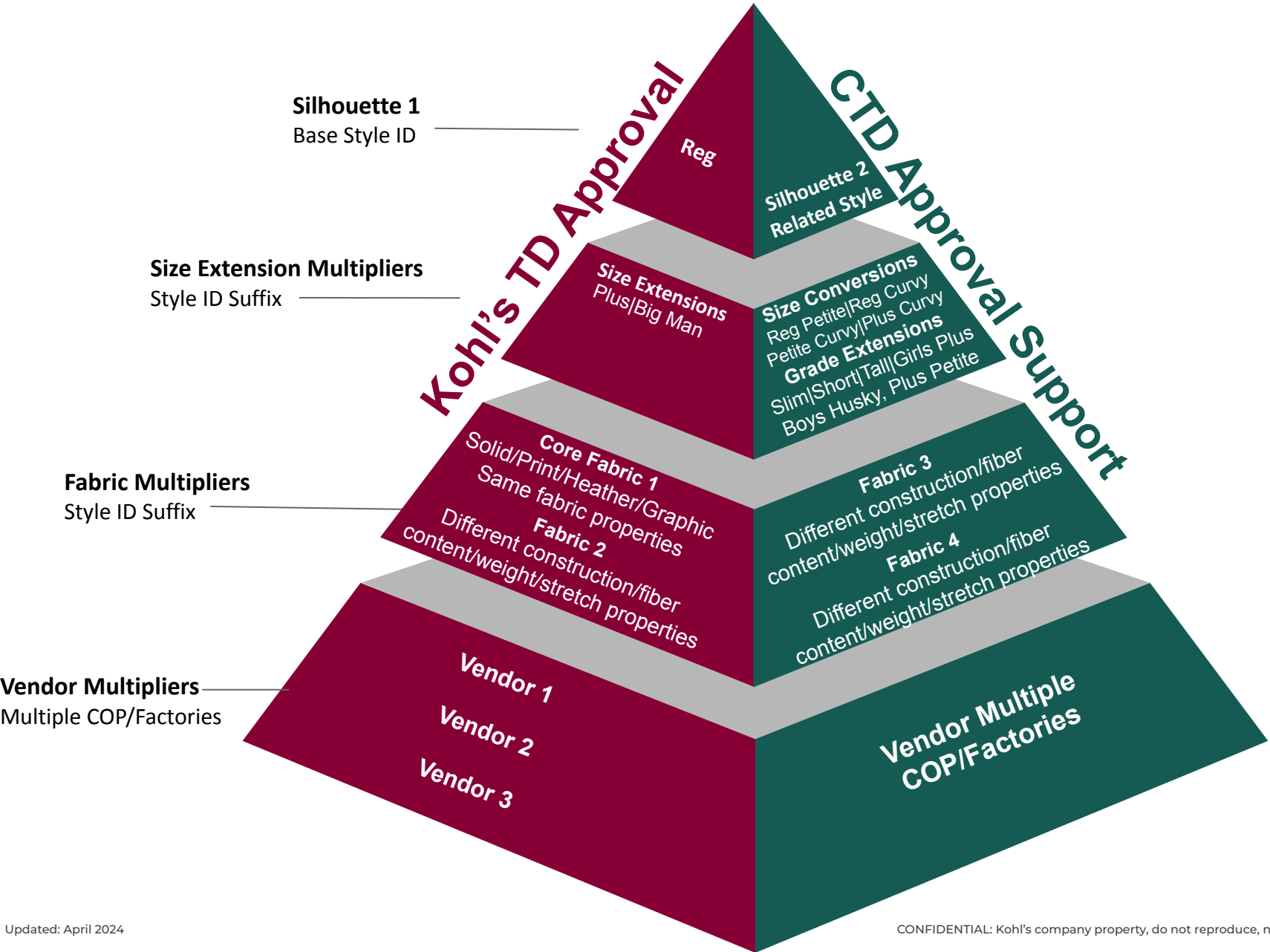
- ❑ Upload .jpg or .pdf attachment to the existing fit eval, on the same sample round as the Required PP Sample.
- ❑ Clearly label CTD Internal PP Sample in the Description field.

Overview Attachments Change Tracking 1				
▼ Attachments				
<input type="checkbox"/> Sort	Attachment No			Description
<input type="checkbox"/>	1	IMAGE	 L R E V E R	P1-S21-R-MN01A002-JQD-HANSAE
<input type="checkbox"/>	2	IMAGE	 L R E V E R	CTD INTERNAL PP SAMPLE P1-S21-R-MN01A002-JSY-HANSAE (100 POLY, JQD, 140 GM2)

Photos of Required PP Sample

CTD Internal PP Sample JPG Attachment

MANAGING MULTIPLE FACTORIES



A PP SAMPLE IS REQUIRED FOR EACH FACTORY, EACH FACTORY MUST HAVE A SEPARATE ONEPLM FIT EVALUATION

- ❑ One PP sample is required for each Fit Evaluation
- ❑ A PP sample is required from each production factory. If there are multiple factories, or the factory changes after PP sample approval, an additional PP sample must be made.
- ❑ Required PP Samples must be entered into OnePLM, and separate Fit Evaluation should be created by CTD level 2 or above.
- ❑ CTD Level 0-1: email KTD with new Factory information.
- ❑ Required PP Sample must be sent to KTD for reference.



ONEPLM EXAMPLE: ADDING NEW FACTORIES

Fit Evaluation: 105585

Overview Attachments Change Tracking 1

Development Stage DEVELOPMENT Style Status CONFIRMED Ecom Excl N

Technical Designer ANN MORROW Designer ERIN AUBREY

Sample Selection

Fit Sample	Size	Sample #	Sample Type	Fit Status
All	10			
Sample 2	10	996346	PRE-PRODUCTION SAMPLE	APPROVED
Sample 1	10		COUNTER SAMPLE	APPROVED

**Original Factory Fit Evaluation:
CTD Level 2 & up must add the Factory
Name to the POM Page Description.**

Evaluation Information

Agent: LI & FUNG KOREA Vendor: SAE-A TRADING CO., ... Factory: PT G. TEXPIA INTERN...
Adopted Style Handoff: 10/01/2019 PP Deadline: 03/03/2020 UM: IN
Number Format: Fraction POM Page Description: R.G.S.ST.60/40.JERSEY.TEXPIA1-SAE-A
Created On: 2020-02-21 01:33:05 Modified on: 2021-01-12 16:25:05 Fit Workflow Alert: 154

Sample Information

Fit Sample: Sample 2 Sample Type: PRE-PRODUCTION SA... Fit Status: APPROVED
Reason Code:
Date Received: 02/28/2020 Ownership: CTD Decision Date: 03/02/2020
Measurer 1: MARIELA ALVARADO ... Measurer 2: Actual Fabric/Material: Yes
Actual Trim/Hardware: Yes Block/Last Used: Yes Actual Outsole: --Select--
Date Fit: 02/28/2020 Fit With:

Additional Factory Steps:

1. Open original factory Fit Evaluation.
2. Add factory name to the end of the POM Page Description.

ONEPLM EXAMPLE: ADDING NEW FACTORIES

Fit Evaluation: 105480 **New Factory Fit Evaluation**

Overview Attachments Change Tracking 1

Development Stage DEVELOPMENT Style Status CONFIRMED Ecom Excl N

Technical Designer ANN MORROW Designer ERIN AUBREY

Sample Selection

Fit Sample	Size	Sample #	Sample Type	Fit Status
All	10			
Sample 2	10	995467	PRE-PRODUCTION SAMPLE	APPROVED 2
Sample 1	10		COUNTER SAMPLE	APPROVED 1

Evaluation Information **Be sure Factory Name is included in POM Page Description on new Fit Eval.**

Agent Vendor Factory

LI & FUNG KOREA SAE-A TRADING CO., ... CENTEXSA II

Adopted Style Handoff PP Deadline UN

10/16/2019 02/21/2020 IN

Number Format POM Page Description

Fraction R.G.S.ST.60/40 JERSEY.CENTEXSA2-SAE-A

Created On Modified on Fit Workflow Alert

2020-02-19 20:37:35 2021-01-12 16:16:00 128

Sample Information

Fit Sample Sample Type Fit Status

Sample 2 PRE-PRODUCTION SA... APPROVED

Reason Code

Date Received Ownership Decision Date

02/20/2020 CTD 02/20/2020

Measurer 1 Measurer 2 Actual Fabric/Material

MARIELA ALVARADO ... Yes

Actual Trim/Hardware Block/Last Used Actual Outsole

Yes Yes --Select--

Date Fit Fit With

02/20/2020

Additional Factory Steps:

1. Follow [Create Fit Evaluation](#) instructions in CTD OnePLM Manual.
2. On Sample 1; fill in Sample Type = COUNTER SAMPLE, Fit Status = APPROVED
3. Adopted Style Handoff date is the day you were advised of the factory change.
4. Be sure to update POM Page Description field with new factory information (see [POM Naming Convention](#))
5. Fill in all [Required Fields](#) on the Fit Evaluation
6. [Initiate Sample](#) Pre-Production Sample round for Sample 2.

ONEPLM EXAMPLE: ADDING NEW FACTORIES

Fit Evaluation List							
<input type="checkbox"/>	Fit Eval Id	POM Page Description	Size	Fit Sample		Sample Type	Fit Status
<input type="checkbox"/>	105585	R.G.S.ST.60/40.JERSEY.TEXPIA1-SAE-A	10	Sample 1		COUNTER SAMPLE	APPROVED
<input type="checkbox"/>	105585	R.G.S.ST.60/40.JERSEY.TEXPIA1-SAE-A	10	Sample 2		PRE-PRODUCTION SAMPLE	APPROVED
<input type="checkbox"/>	105480	R.G.S.ST.60/40 JERSEY.CENTEXSA2-SAE-A	10	Sample 1		COUNTER SAMPLE	APPROVED
<input type="checkbox"/>	105480	R.G.S.ST.60/40 JERSEY.CENTEXSA2-SAE-A	10	Sample 2		PRE-PRODUCTION SAMPLE	APPROVED

When searching style # by Fit Evaluation in OnePLM, CTD will see 2 Fit Evaluations: One for each factory.

CTD Level 2 or Higher: Evaluate/Approve PP sample from new factory

CTD Level 1, no CTD Level 2 available: Evaluate PP in new factory Fit Evaluation created by KTD, Send New Factory PP to KTD for Approval

**Every Fit Evaluation should have either a Counter or Fit sample round with an Approved status and Pre-Production sample round with an Approved status.*

ONEPLM FIT EVALUATION



**Fields by KTD/CTD
Level**

Sample Rejections

**Multiple Sample
Options**

3D Samples

ONEPLM FIT EVALUATION

FIELDS BY KTD/CTD LEVEL

REQUIRED FIELDS: See [REQUIRED FIELDS ON FIT EVALUATION](#). “Owner” is defined by Approval Ownership & scenario below.

FIT EVALUATION STATUS / NEXT STEPS: See chart in [KOHL'S FIT COMMENT TEMPLATE](#)

FIT EVALUATION REASON CODES: See [REASON CODES](#) in CTD OnePLM Manual and Reason Code Explanation in [KOHL'S FIT POLICY](#)

SAMPLE TYPE	APPROVAL OWNERSHIP	SCENARIO	MEASURER 1 FIELDS				MEASURER 2 FIELDS				CTD ASSESSMENT	
			CTD NAME	MEASUREMENTS	MEAS. COMMENTS	FIT COMMENTS	KTD NAME	MEASUREMENTS	MEAS. COMMENTS	FIT COMMENTS		
COUNTER SAMPLE	CTD	NO SAMPLE	Factory change: NEW FIT EVAL FOR EACH FACTORY				CTD LEVEL 2-4				KTD IF ONLY CTD LEVEL 0-1	
	CTD OR KTD	NO SAMPLE	Vendor Assist or Special Size				CTD LEVEL 3-4					KTD
		NO SAMPLE	Evaluation of Fittable Counter Sample by vendor before sending to Kohls ADD GREEN DOT STICKER TO SAMPLE TAG AFTER EVALUATION				CTD LEVEL 0-4 (or trained sample room technician): FIT EVALUATION IN ONEPLM DOES NOT NEED TO BE FILLED OUT. Mark measurements on back of sample tag or attach print out of POM page with measurements to the counter sample tag.					KTD
FIT / 3D SAMPLE	CTD	Fit sample approval authority has been passed to CTD	CTD LEVEL 0-2				CTD LEVEL 3-4				KTD	
			CTD LEVEL 2 WITH LEVEL 3 GAC, KTD oversight				KTD	Sample w/ CTD	KTD			KTD
			CTD LEVEL 3-4				KTD may choose to review comments/photos if need to confirm updates w/ design. KTD will specify in next steps of previous sample					
	KTD	CTD reviews fit sample for accuracy of corrections before sending fit sample to KTD	CTD LEVEL 3-4	CTD LEVEL 0 W/ CTD LEVEL 3-4 OVERSIGHT: CTD LEVEL 0 enters comments & measurements 1st for CTD level 3-4 review. CTD level 3-4 adds their name to name field, reviews work in same fields and adds any additional comments next to CTD level 0 comments & adds CTD Level 0 assessment at the end of the comments.				KTD				CTD LEVEL 3-4
			CTD LEVEL 1-4				KTD				KTD for CTD Level 1-2	
	3D FIT	CTD LEVEL 1-4	CTD does not need to enter measurements, but must upload image/file attachments on attachments tab		Note if actual fabric was scanned/used for 3D images		KTD	No physical sample		KTD		
PP SAMPLE	CTD	PP sample approval authority has been passed to CTD	CTD LEVEL 0-1				CTD LEVEL 3-4				KTD	
			CTD LEVEL 1 WITH LEVEL 2 GAC, KTD oversight				KTD	Sample w/ CTD	KTD			KTD
			CTD LEVEL 2-4									
	KTD	CTD reviews PP sample for accuracy of corrections before sending fit sample to KTD	CTD LEVEL 3-4	CTD LEVEL 0 W/ CTD LEVEL 3-4 OVERSIGHT: CTD LEVEL 0 enters comments & measurements 1st for CTD level 3-4 review. CTD level 3-4 adds their name to name field, reviews work in same fields and adds any additional comments next to CTD level 0 comments & adds CTD Level 0 assessment at the end of the comments.				KTD				CTD LEVEL 3-4
CTD LEVEL 1-4				KTD				KTD for CTD Level 1-2				

REJECTED SAMPLES FIT OR PP: CTDs at ANY level may internally reject a sample if they deem the sample is not approvable for fit and/or construction, even if KTD has not given authority to CTD for sample approval. See next page for steps.

INTERNAL SAMPLE REJECTION BY CTD

NOTE: Rejected fit rounds no longer show in the vendor score card!

Fit Evaluation: 94825
FIT EVALUATION

Overview
Attachments
Change Tracking 3

Fit Sample	Size	Sample #	Sample Type	Fit Status
All	10			
Sample 4	10	918489	PRE-PRODUCTION SAMPLE	APPROVED
Sample 3	10	910797	FIT SAMPLE	APPROVED 2
Sample 2	10	908951	FIT SAMPLE	REJECTED 1
Sample 1	10		COUNTER SAMPLE	NOT EVALU

Evaluation Information

Agent: LI & FUNG TAIWAN | Vendor: ECLAT TEXTILE CO., L... | Factory: SON HA GARMENT J...

Adopted Style Handoff: 07/30/2019 | PP Deadline: 10/01/2019 | UM: IN

Number Format: Fraction | POM Page Description: E.H/H1.100 POLY JERSEY.

Created On: 2019-09-02 02:58:03 | Modified on: 2021-01-12 16:42:19 | Fit Workflow Alert: 63

Sample Information

Fit Sample: Sample 2 | Sample Type: FIT SAMPLE | Fit Status: REJECTED

Reason Code: POOR PATTERN EXECUTION/NOT BALANCED

Date Received: 08/14/2019 | Ownership: CTD | Decision Date: 08/14/2019

Measurer 1: MICKIE WONG | Measurer 2: | Actual Fabric/Material: Yes

Actual Trim/Hardware: Yes | Block/Last Used: Yes | Actual Outsole: | Date Fit: 08/14/2019 | Fit With: | Fit Session Attendees: |

When should a CTD reject a sample before submitting to Kohls?

1. When fit and construction corrections requested in previous sample round have not been made or did not improve the appearance of the sample.
2. Multiple Critical/Primary measurements are too far outside of tolerance to evaluate the fit/sample and should be brought back to spec.
3. Appearance of workmanship/sewing is so poor it is impacting the ability to accurately evaluate the fit of the sample.
4. See other reasons indicated in the onePLM [Reason Codes](#)

To Reject a sample:


1. Change Ownership field to 'CTD'
2. Fill in all [Required Fields](#) on the Fit Evaluation including reason code field. Mark sample status as 'REJECTED'
3. **CTD Level 0-1:** Send email or threaded message to ask KTD to initiate new sample round.
4. **CTD Level 2-4:** [Initiate Sample](#) next Sample round and fill in 'Ownership' field based on previous sample 'Ownership field'. Send email or threaded message to KTD to alert KTD that CTD has internally rejected the sample and initiated a new sample round.

MULTIPLE SAMPLE OPTIONS - USE SAME FIT ROUND

If KTD has requested options or CTD/Patternmaker would like to show alternate options for fit, pattern or construction changes:

1. Enter the garment measurements for the Kohl's requested sample in the Measurer 1 Actual field
2. Enter the measurements for the option sample in Measurer 1 Comments field.

Make sure Sample tag is clearly marked Option 1 vs Option 2

 **Fit Options can also be shown using 3D/Digital samples if it is faster than making another physical sample!**

Fit Evaluation: 62149

Overview Attachments Change Tracking 1

[View IMAGE](#) [Add](#) [Edit IMAGE](#) [View Versions](#)

Measurer 1 Fit Comments

2/12/2018 by Nari Kim
 OPTION 1 (Measurer 1)- Kohl's Requested
 OPTION 2 -(Measurer 1 comments) Revised Shoulder closed. We closed shoulder different to be more production friendly

Date: 2018/2/05
 Sample Type: 1ST FIT Sample
 Sample Color: HYPNOTIC BLUE (Sample Fabric Weight: 196G/M2)
 Vendor, CTD Name: Nari Kim [narikim@lee-co.co.kr]
 L&F TD: Jenna Lee (jennaLee@LFSourcing.com)
 Factory: MODAS SHALOM
 COP: GUATEMALA
 UNITS: TBD

SAMPLE WASH INFO
 Non - Wash: Y [] N [V]
 Fabric Wash: Y [] N [V]
 Garment Wash: (list type of garment wash)

STYLE/FABRIC INFO
 Fabric 1: 95/5 RAYON/SPAN JSY, 200GR/M2 - TEXTILES COLOR REALS
 Thread: Needle: Tex21 Poly/Spun - A&E GUATEMALA
 Loooper: Tex18 Textured - A&E GUATEMALA
 Other: 1/4" Clear Stretch Tape - JCA
 Hanger Loop: 1/8" Satin Tape - dinamix
 Label Attachment: Main label: We use loop label & Inset it at CBN of garment. And insert Size & Country of Production label 1/8" to right of main label.

Measurer 2 Fit Comments

Date: 2/9/2018
 Sample Type: 1st fit
 Sample Color: Hypnotic Blue
 By: Karen Koch, Assistant TD, to Kristin Myatt, TD

STATUS: FIT APPROVED by Kohl's TD- FOLLOW BELOW COMMENTS FOR CORRECTIONS. No further sample or documentation is required by Kohl's TD. CTD may need to review a sample in preparation for Production. Agent may advise to document PR in ONEPLM or skip PR in limited cases. A QA Reference sample must be available before production begins.

I HAVE ACCEPTED OPTION 2

For Options add your requested option in Measurer 1 Comments Box.

▼ Details 5013378

Points of Measure										Sample 2(01/29/2018) 10(10)				
QA	P/S	Attachment	HTM	Code	POM Description	Tol(-)	Tol(+)	Spec	Measurer 1 Actual	Measurer1 Delta	Measurer 1 Comments	Measurer 2 Actual	Measurer 2 Delta	
<input checked="" type="checkbox"/>				A000	RAYON/SPANDEX JERSEY & NEP JERSEY						OPTION 2			
<input type="checkbox"/>	P			A001-LA000	LADIES ALPHA SIZES XXS(000-00) XS(0-2)									
<input checked="" type="checkbox"/>				A300	LEN HPS TO HEM	-1/2	1/2	26	26	0	26			
<input checked="" type="checkbox"/>				A100	NK WIDTH@SEAM	-1/4	1/4	7 3/4	7 3/8	-3/8	7 1/4			
<input checked="" type="checkbox"/>				A110	FRT NK DROP@SEAM	-1/8	1/8	8 1/2	8 3/8	-1/8	8 3/8			
<input checked="" type="checkbox"/>				A120	BK NK DROP@SEAM	-1/8	1/8	1 1/8	1	-1/8	1 1/8			

3D SAMPLE ROUND

If KTD has requested 3D to review pattern corrections, or if CTD / Patternmaker would like to show alternate options for fit, or pattern corrections before proceeding to 1st fit:

1. Sample Type = 3D FIT SAMPLE
2. CTD selects their Name in Measurer 1 field
3. Measurer 1 CTD fit comments can be short, fit comment template is not required. Most 3D comments can be noted directly on the 3D image.
4. CTD uploads 3D images and .bw 3D file in Attachments (see next page)

Fit Evaluation: 156999

Overview Attachments Change Tracking 8

ID

Evaluation Information

Agent: LI & FUNG KOREA Vendor: NOBLAND INTERNAT... Factory: Fit Eval Id: 156,999

Adopted Style Handoff: PP Deadline: UM: IN Fit Eval No: 156999

Number Format: Fraction

POM Page Description: RS_RS2_JERSEY/K CREPE

Created On: 2023-06-20 13:36:28 Modified on: 2023-07-26 12:26:23 Fit Workflow Alert:

Item Information

Fit Sample: Sample 1 Sample Type: 3D - FIT SAMPLE Fit Status: NOT APPROVED

Reason Code: 3D APPVD-SEND FIT SAMPLE

Date Received: 09/07/2023 Ownership: KOHLS TD Decision Date: 04/12/2024

Measurer 1: CTD NAME Measurer 2: JERILYN BOOTH Actual Fabric/Material: --Select--

Actual Trim/Hardware: --Select-- Block/Last Used: --Select-- Actual Outsole: --Select--

Date Fit: Fit With:

Fit Session Attendees:

Enlarge Add Edit IMAGE Versions

Measurer 1 Fit Comments: 8-1-23 CTD: See attached uploaded 3D files w/ suggestions

Measurer 2 Fit Comments: 8-2-23 JERILYN BOOTH:

Sample Comment:

KTD will determine Fit Status on 3D sample rounds. We are currently not using 3D to fit approve, so Fit Status will usually be NOT APPROVED, and Reason Code will indicate if 3D is approved for fit sample, or if 3D should be re-submitted. If 3D needs to be resubmitted. KTD will initiate a new 3D fit sample round instead of a Fit Sample round for next step.

ONEPLM FIT EVALUATION

3D SAMPLE ROUND

Attachments Tab:

1. 3D image (.jpg, .png, or .pdf) of original pattern before corrections
2. 3D image of revised pattern
3. Revised pattern 3D Pressure Map image
4. Image of before/after pattern corrections w/ pattern measurements
5. Original Pattern Browzwear V-stitcher file
6. Revised pattern Browzwear V-stitcher file

For complete details of 3D Fit Sample output requirements, see [Sample Standard Output Requirements](#) under DPC on K-link

Fit Evaluation: 156999

Overview Attachments Change Tracking 8

Sort	Attachment No	File N	WM
<input type="checkbox"/>	1	IMAGE	WM
<input type="checkbox"/>	2	IMAGE	WM
<input type="checkbox"/>	3	IMAGE	WM
<input type="checkbox"/>	4	IMAGE	WM
<input type="checkbox"/>	5	ATTACHMENT	WM
<input type="checkbox"/>	6	3D PATTERN	WM

Large Image

WM41G522-CTR-V1-NOBLAND
WRAP JUMPSUIT
SP24 AVATAR CODE : KOS-WMT7M12-1903
Fabric : SUBSTITUTE
81744_FS-30-7R+S-L_K_95-5_RAVON-SPANDEX_JERSEY_220GM2
Color : Medium Grey

CS 3D - NB

WM41G522-ctr-v1.zip

WM41G522-CTR-V2-KTD.ZIP
FILE CONTAINING KTD
PATTERN SUGGESTION IN 3D

Browzwear V-stitcher files (.bw), may now be uploaded directly to the attachments tab without compressing into .zip folder