

Women's Extended Size Process

October 2024

WOMEN'S GLOBAL TECHNICAL DESIGN TEAM

KOHL'S

Goal

- Streamline the process, add efficiencies
- Reduce approval time on extended sizes
- Reduce sampling cost
- Reduce the amount of change, rejected samples
- Empower the CTDs
- Establish a global conversion standard
- Ensure global fit consistency



Process Highlights

Sizes that ***always*** require a fit sample:

- Missy-Reg
- Plus takedowns from Missy
- Exclusive Plus/Petites

Sizes that ***always*** require a PP sample:

- Missy-Reg
- Plus takedowns from Missy
- Exclusive Plus/Petites
- Petite Sweaters
- Missy Petite - Exaggerating styling details, CTD Level 1 vendor
- Curvy/Straight (Missy/Plus)

Sizes that ***may*** bypass a fit sample:

- Petite/Tall (Missy/Plus)
- Curvy/Straight (Missy/Plus)
- Short/Long

Sizes that ***may*** bypass a PP sample:

- Missy Petite Standard Conversion
- Plus Petite/Tall
- Petite Curvy (Missy/Plus)
- Short/Long (Missy/Plus)

Women's (Missy)

Petite, Curvy, Straight, Shorts, Longs & Talls

Dress form: Women's Regular (Missy), Petite, Curvy

Regular (Missy)

Size 8: KOS-WMS0008-1509
Size 10: KOS-WMS0010-1509
Size 12: KOS-WMS0012-1604



Missy Petite

Size 8: KOS-WPT0008-1604
Size 10: KOS-WPT0010-1604
Size 12: KOS-WPT0012-1604



Missy Curvy

Size 8: KOS-WMS08FC-1604
Size 10: KOS-WMS10FC-1903 *(digital only)*
Size 12: KOS-WMS12FC-1903 *(digital only)*



Petite Curvy

Size 8: KOS-WPT08FC-1604
Size 10: Not Available
Size 12: Not available



* Base (fitting) size may vary between 8, 10, or 12 - depending on the brand, see [Kohls Dress Form chart](#)

Extended Size Procedure for New Style development

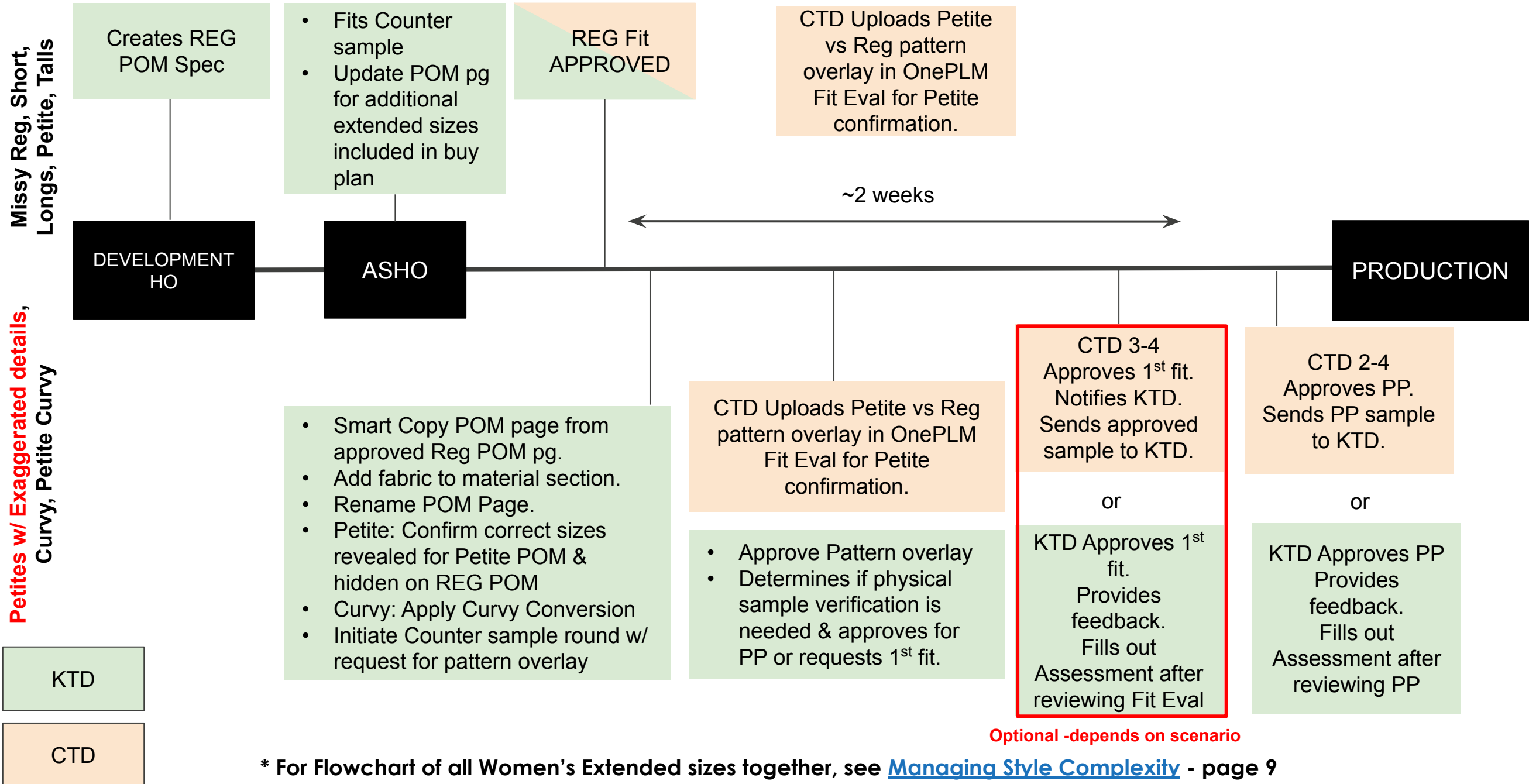
Special Size Range	Costing POM/Spec Timing	Fit Approval Procedure	Required Samples
Women's (Missy) Petites / Petite Curvy: Same styling as Missy Reg w/ styling details that should follow standard conversion *	Cost based on petite spec shown with Reg sizes on POM page and following same grade as Reg.	<u>Vendors CTD level 2 & UP:</u> <ul style="list-style-type: none">• After Reg/Reg Curvy Fit approval, KTD sends threaded message to CTD to upload petite vs reg pattern overlay for approval.• Petite/Petite Curvy conversion applied to final Missy Reg/Reg Curvy pattern following petite pattern adjustment guidelines• CTD uploads Missy to Petite Pattern Comparison in Reg Fit approved Fit evaluation for review & approval.• KTD/CTD Level 3 & UP: approve Petite pattern comparison within the Reg Fit approval fit comment. CTD Level 2 defers to KTD.• KTD initiates Reg PP sample round after Petite pattern overlay approved.• CTD uploads approved Petite PP pattern on OnePLM Attachments Tab	<ul style="list-style-type: none">• No sample required.• Vendor may choose to make a PP sample for factory audit purposes but does not have to record in OnePLM unless requested by KTD.
		<u>Vendors CTD level 1 & Sweaters:</u> Initial 1 st season, choose 1-2 styles to verify understanding, then follow Historical Vendor process above. <ul style="list-style-type: none">• KTD Initiate Petite Fit Eval from Reg/Petite POM page request pattern comparison for approval at Counter Sample round. (Sweaters = Approve Counter sample & go straight to PP sample)• Vendor CTD upload Missy to Petite pattern comparison in Counter Sample round.• KTD approve Petite pattern comparison and mark Counter Sample = Approved.• Initiate Petite PP sample for KTD physical sample confirmation.• CTD uploads approved Petite PP pattern on OnePLM Attachments Tab	<ul style="list-style-type: none">• PP sample required
Women's (Missy) Petites / Petite Curvy: Same styling as Missy Reg w/ exaggerated styling details as <u>standard conversion may need to change</u> for correct proportions.	Cost based on petite spec shown with Reg sizes on POM page and following same grade as Reg. Exaggerated styling details include: <ul style="list-style-type: none">• large neck openings• dropped shoulder/dolman• cropped or longer tunic/dress body lengths• fuller sweeps on skirts & dresses• oversize ease over body• specific/marketed inseams	<u>Petites w/ Exaggerated Styling Details:</u> <ul style="list-style-type: none">• After Reg style is fit approved, KTD: smart copy REG POM page to create Petite POM page with only Petite sizes revealed.• Petite POM page - KTD Change base size from 8R/10R/12R to 8P/10P/12P• KTD: Hide Petite sizes on REG POM page.• KTD: Create Petite Fit Evaluation from Petite POM pg.• KTD: reviews either 3D or physical sample to compare proportions between Reg & Petite. Whichever method is more efficient for reviewing.• If standard Petite conversion is still applicable for exaggerated styling, approve and note that separate Petite spec is not required for future seasons.• If Petite proportions need to be adjusted, revise Petite specs for proportion adjustments and request PP sample for confirmation. Add POM A000 – “Petite spec does not follow standard conversion” to POM page.	<ul style="list-style-type: none">• Fit Sample for confirming conversion• PP sample

Extended Size Procedure for New Style development

Special Size Range	Costing POM/Spec Timing	Fit Approval Procedure	Required Samples
Women's (Missy) Petites: Exclusive style details	POM page created at time of Design Hand-off.	Follows regular fit approval process	<ul style="list-style-type: none"> Fit sample reviewed by KTD w/ Design - if design aesthetic is not already established PP sample
Women's (Missy) Curvy: Same styling as Missy Reg	Cost based on Curvy conversion or historical style. Curvy POM page will be created off of fit approved Reg POM page.	Known Fabrics: <ul style="list-style-type: none"> After Reg style is fit approved, KTD smart copy REG POM page to create Curvy POM page. Update POM page description and Size Indicator. KTD Apply appropriate Curvy Conversion to Curvy POM Base size spec KTD Create Curvy Fit Evaluation from Curvy POM page. Determine if fabrication stretch requires physical sample verification of conversion. (see Unknown fabrics below). Initiate Counter Sample round & request Missy to Curvy Pattern comparison CTD upload Missy to Curvy Pattern Comparison Counter Sample round on fit evaluation for KTD for review & approval. Counter sample = approved for approved pattern comparison Initiate a PP sample for physical sample confirmation. Add POM A000 – “Curvy spec follows Rigid OR High Stretch Conversion” to POM page. CTD uploads approved Curvy PP pattern to OnePLM Attachments Tab 	<ul style="list-style-type: none"> No fit sample required. PP sample required New fabric or other exceptions: Fit sample may be required
		Unknown Fabrics: <ul style="list-style-type: none"> Counter Sample = Not Approved after reviewing curvy pattern comparison. Initiate Fit sample for fabric confirmation. Fit sample = approved. Initiate PP sample CTD uploads approved Curvy PP pattern to OnePLM Attachments Tab 	<ul style="list-style-type: none"> Fit Sample Required PP sample required
Women's (Missy), Short, Long, & Tall	Additional POMs are added to Reg POM page when extended size is requested * Tall is smart copied from approved REG POM page and conversion applied	<ul style="list-style-type: none"> Shorts, Longs, & Talls are a mathematical conversions applied to final pattern/marker for production. Initial sample w/ New Direct Vendor: Review Reg vs Short, Long, or Tall pattern comparison to verify correct pattern application. Upload and record on Reg Fit evaluation after Reg fit approval & before initiating Reg PP sample request. 	No samples required

* **Carry-Over styles:** Costing POM is copied from previously approved season and fit approval given if no changes to fit, vendor, fabric.
 If Petite follows standard conversion - no exaggerated styling details, Missy & Petite Approval are given together on the Missy Fit Evaluation based on Fit approval from previous season

Missy Extended Size Process Flow *



* For Flowchart of all Women's Extended sizes together, see [Managing Style Complexity](#) - page 9

Process Flow- Fit Comment Template & Threaded Message

Exceptions

- Some Petite/Curvy take-down styles may require Kohl's TD approval. Kohl's TD initiates fit sample request and proceeds to approval per standard fit process protocol.
- Petite seasonal bottoms may have an exclusive inseam length. Inseam and Leg Opening will be adjusted, not following standard conversion. Kohl's TD will provide the updated specs and may still allow for CTD Fit Approval ownership.
 - **Need to add POM Code A000 - Petite spec does not follow standard conversion**

KTD: *Threaded Message for Extended size request:*

Option 1: Petite style with exaggerated styling details that needs to be verified for spec conversion.

Copy and Paste Threaded message to CTD: *Style # _____ is Adopted as Petite and Reg is fit approved. Petite conversion needs to be verified for exaggerated styling details. A separate Petite POM page has been created and materials are added. Proceed with Petite vs Missy Reg pattern overlay for TD Approval After pattern overlay approval, proceed to 1st fit and compare Petite sample against Reg Approved fit sample to confirm if additional adjustments should be made for Petite proportion.*

Option 2: Curvy style – known fabric stretch properties, No sample required

Copy and Paste Threaded message to CTD: *Style # _____ is also being Adopted as Curvy. Curvy POM page is created and materials are added. Upload Curvy Pattern vs Reg Pattern overlay for Kohl's TD approval. After pattern overlay approved, copy & paste in Fit Eval: FIT APPROVED based on curvy pattern overlay. Proceed with Pre-Production Sample for approval.*

Option 3: Curvy style – unknown fabric stretch properties

Copy and Paste Threaded message to CTD: *Style # _____ is also being Adopted as Curvy. Curvy POM page is created and materials are added. Upload Curvy Pattern vs Reg Pattern overlay for Kohl's TD approval. Proceed to 1st fit sample for fit approval (KTD or CTD level3) reviewing fit on available curvy dressform.*

CTD: *Threaded Message for Pattern Overlay:*

Option 1: Most extended sizes.

Copy and Paste Threaded message to KTD: *Extended Size vs Reg Pattern Overlay has been uploaded to the Fit Evaluation for KTD approval. Please confirm next steps after Extended Size pattern is approved.*

Option 2: CTD Level 3 Missy Petite/Petite Curvy** Standard Conversion:**

Copy and Paste Threaded message to KTD: *Petite/**Petite Curvy** vs Reg/**Reg Curvy** Pattern Overlay has been approved. Reg PP sample has been initiated.*

KTD Expectations

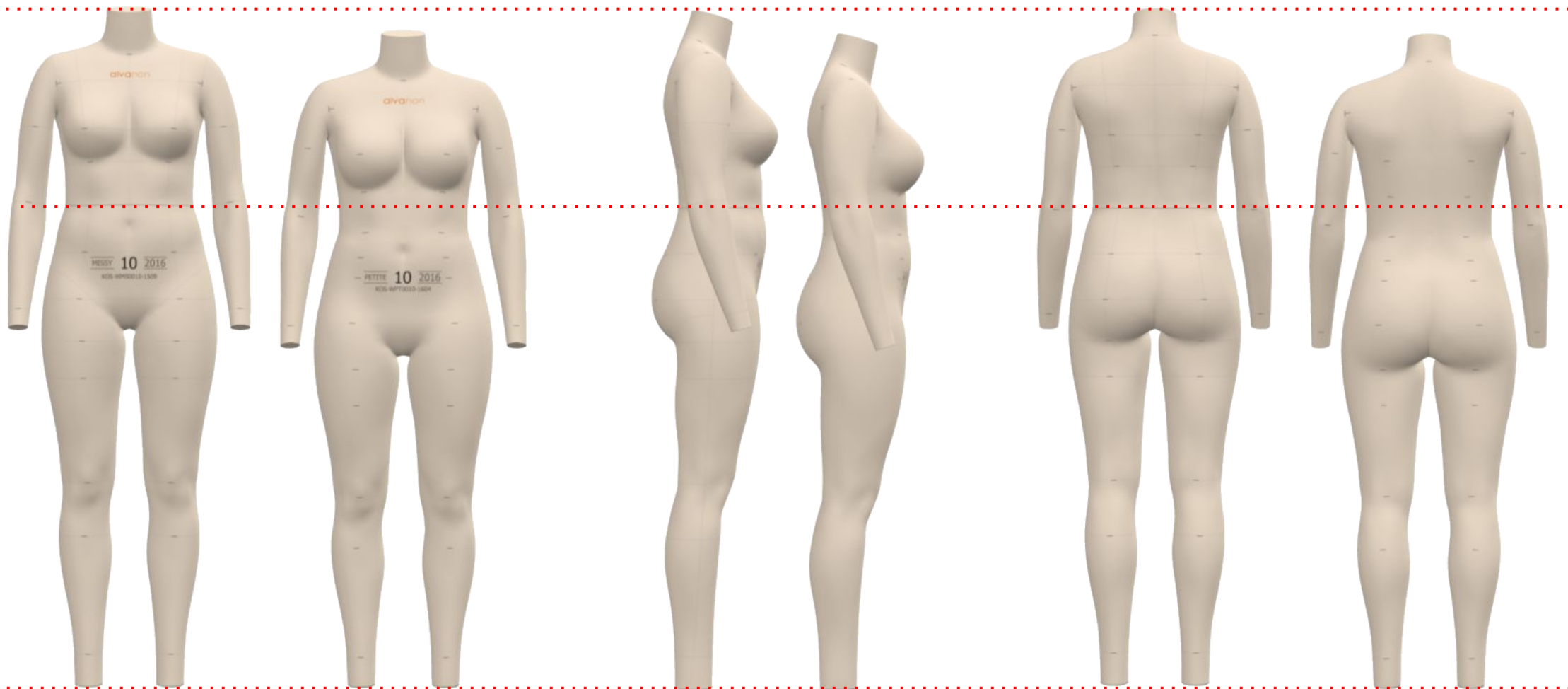
- Petite:
 - Ensure REG POMs with variable Petite conversions are using the correct POM code in Womens Reg POM page for correct Petite conversion
 - Example - Neck width , Dress length
 - Alert PM team:
 - Any time Womens Reg is significantly updated during fit process for styling/fit intent and confirm if Petite is being dropped or becoming exclusive
 - Tops: Changing from regular length to tunic (tunics don't work in petites)
 - Tops: Changing to a large exaggerated neckline (large neck opening usually don't work in petites)
 - Bottoms: inseam (not all inseams work in petites)
 - If Womens Reg styling/fabric/fit intent is changing significantly during fit process and may cause concern about CTD Petite approval. It is OK for Kohl's TD to revoke CTD approval ownership with an explanation to the CTD.
 - Example- Changing from known fabric to new/exclusive, details getting exaggerated, etc.
- Make sure to refresh the Womens Reg grade table
- Follow fit process protocol if KTD has approval ownership
 - Document CTD Assessment/feedback

Women's (Missy) Reg to Petite

Petite size is a grade adjustment down from the Missy Reg Pattern

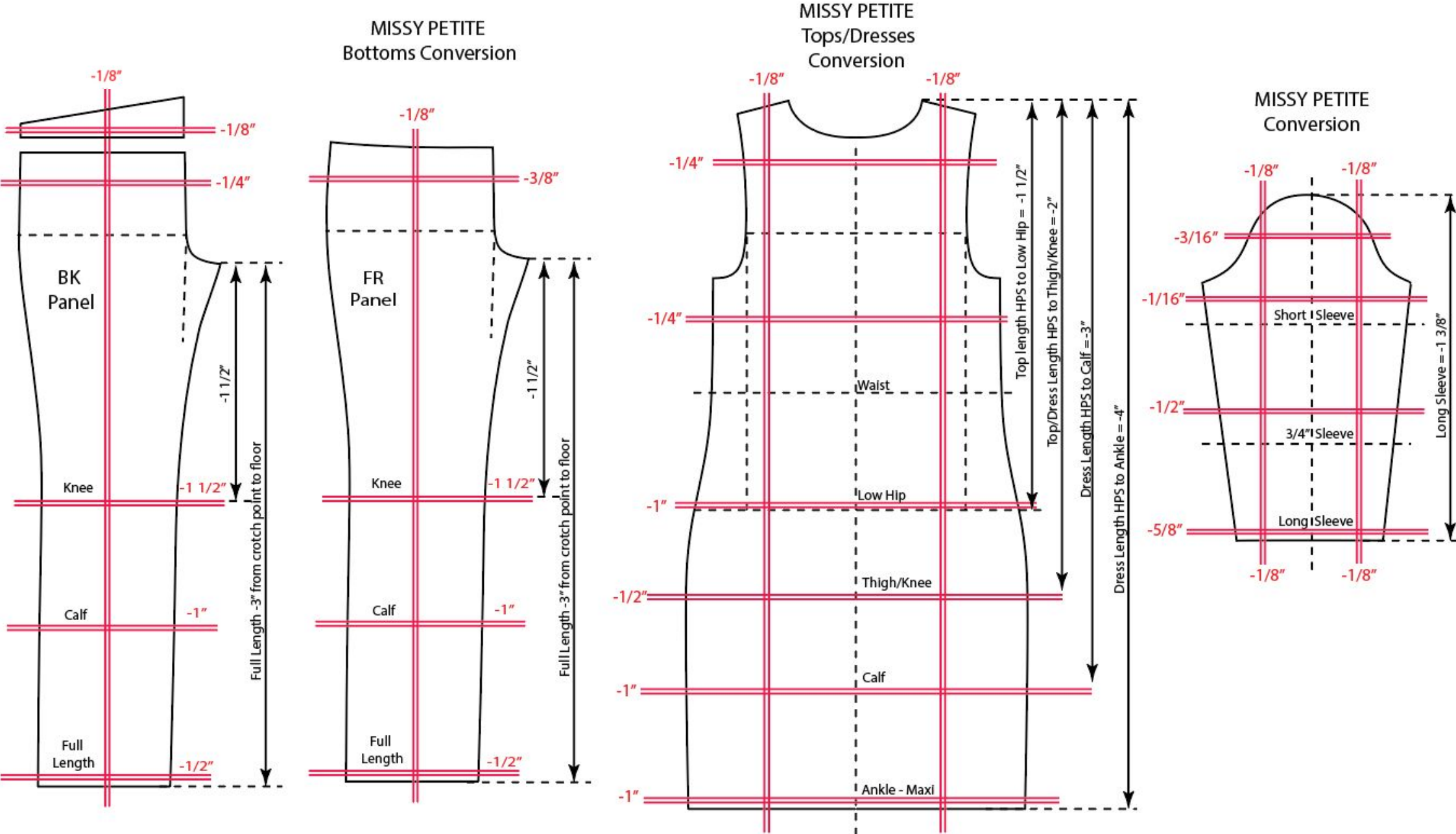
Differences when converting Missy to Petite:

- Petite height: Shorter in torso/ body, inseam & arm length.
- Petite width/circumference: Adjusted at different points 1/4" to 1/2" (Bust, Waist, Hip, Etc)



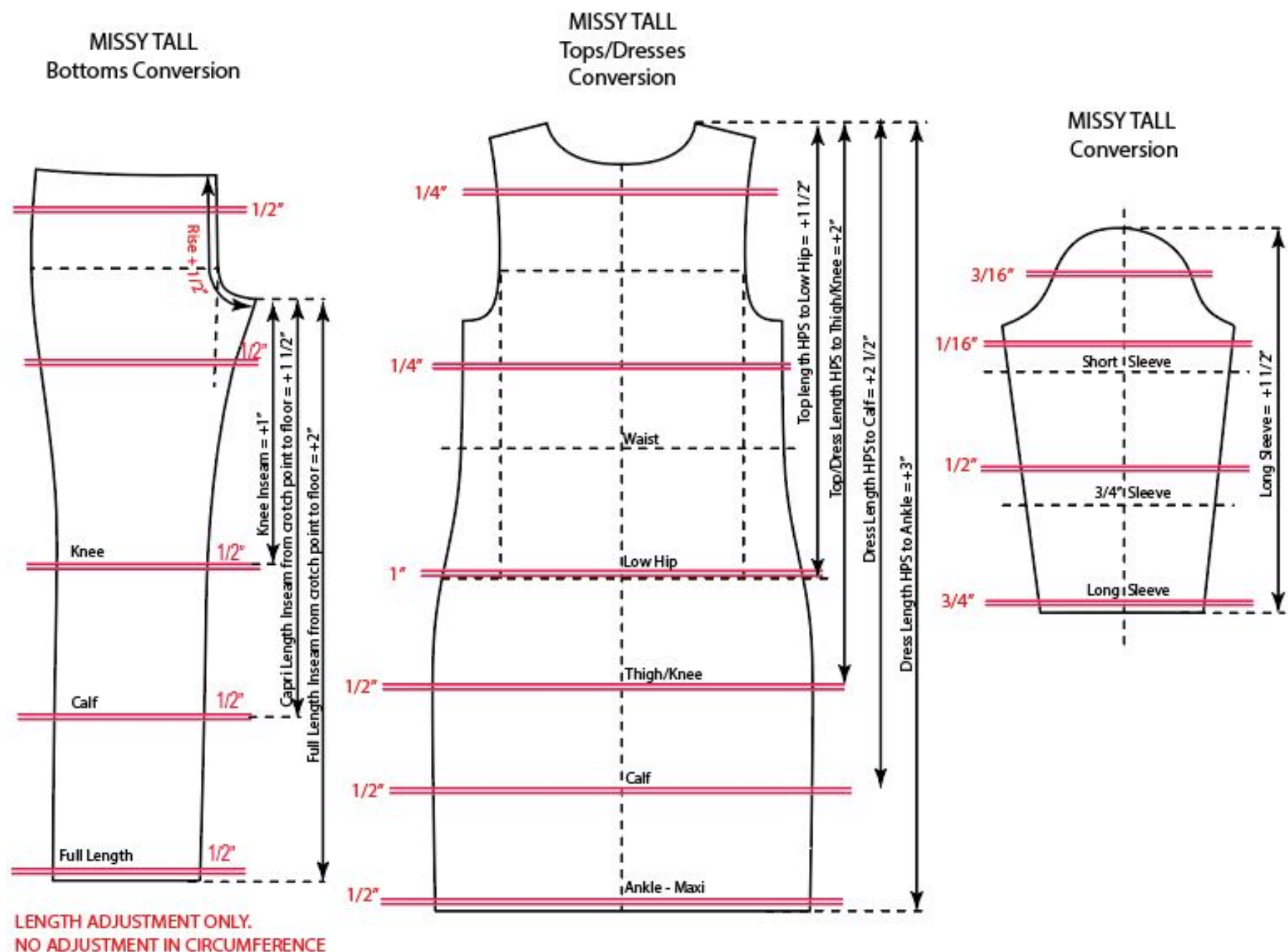
Women's Missy to Petite Pattern Adjustment

See [Women's Extended Size Conversions](#) (Missy) Reg to Petite for measurement conversion



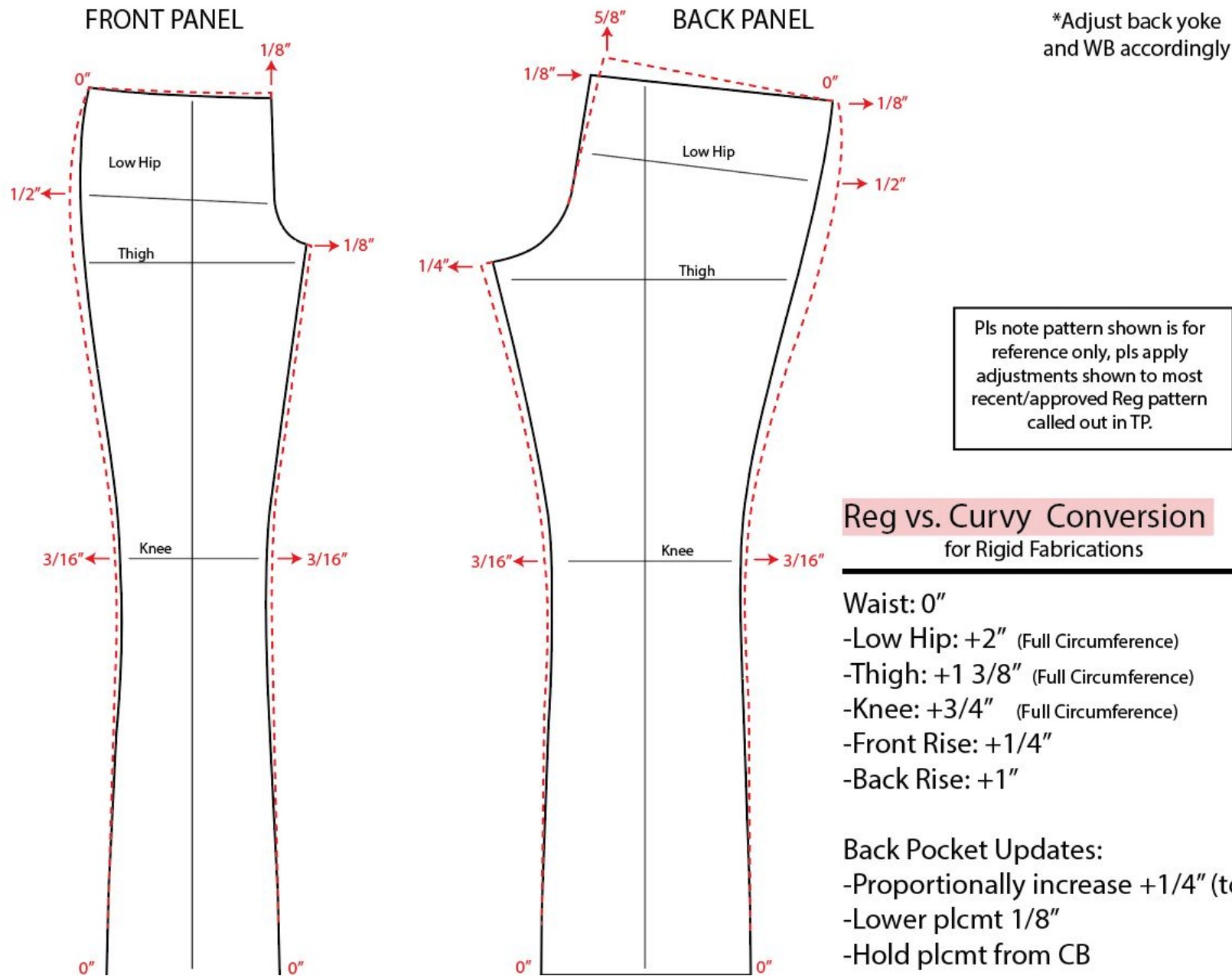
Women's Missy to Tall Pattern Adjustment

See [Women's Extended Size Conversions](#) (Missy) Reg to Tall for measurement conversion



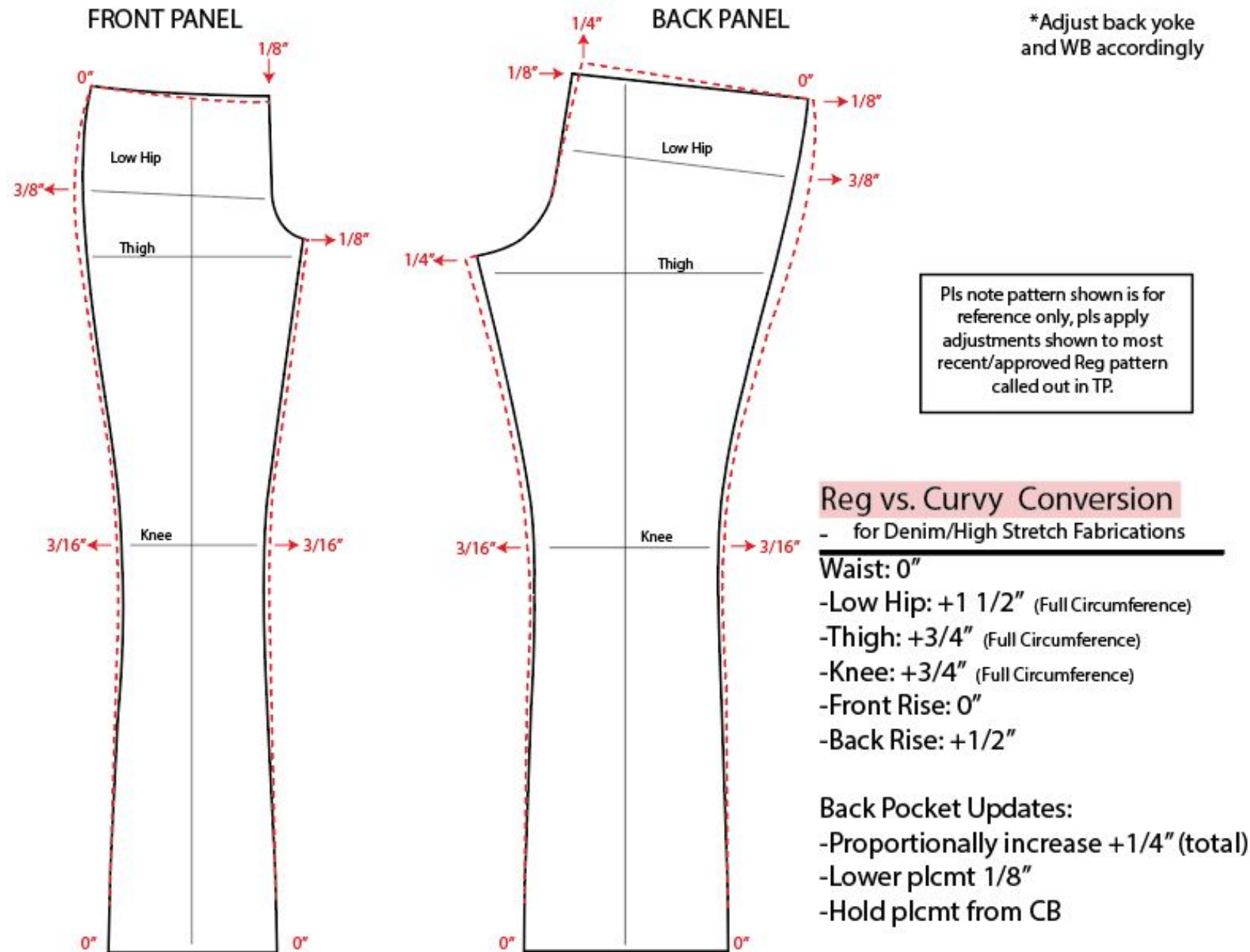
Reg to Curvy Pattern Adjustment – Rigid Fabric

See [Women's Extended Size Conversions](#) (Missy) Reg to Curvy for measurement conversion



Reg to Curvy Pattern Adjustment – High Stretch Fabric

See [Women's Extended Size Conversions](#) (Missy) Reg to Curvy for measurement conversion



Petite to Petite Curvy Conversion

WOMEN'S/ YOUNG WOMEN'S
GLOBAL TECHNICAL DESIGN TEAM

KOHL'S

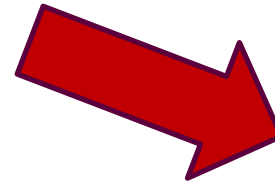
Petite to Petite Curvy Conversion

There are multiple ways to convert to Petite Curvy.

Option 1:

**Convert from
Missy Curvy to Petite Curvy**

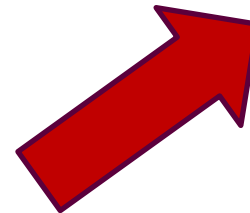
**Execute by revealing Petite Curvy
sizes on Missy Curvy POM page**



Option 2:

**Convert from
Petite to Petite Curvy**

**Execute by using the
“Reg to Curvy” Conversion**



Petite Curvy

OnePLM

For additional OnePLM Instructions see [CTD OnePLM Manual](#) on K-Link

Updating TP

WOMEN'S GLOBAL TECHNICAL DESIGN TEAM

KOHL'S


Update POM page-Adding Missy Petite Sizes to Reg POM page

*Process is same for Reg Curvy & Petite Curvy

- **‘Change Size Range’** to activate new petite sizes available within POM page
- Select “Ladies (000-20) Reg & Petite”
- Grading Model Name should update to new (Reg & Petite) model
- **Add Petite dress form number into Dress Form 2 box** (for standard conversion)
- **Rename POM Page Description** according to the [POM Page Naming Convention](#) in OnePLM Manual, but add R.E. for Reg and Petite at the beginning of the POM Page description for combined sizing on same POM page.
 - Example: R.E.Cotton Jersey
- **Change Size Indicator** from Regular to Regular/Petite

Overview | Design Intent | Constructions | Instructions | Standards | **POM** | Samples | BOM | Attachments | Indica

Base Style Information

Image:  Description: WMNS 10 GRADE EXERCISE SP22

Development Stage: TEMPLATE | Style Status: NEW | Technical Designer: ANDREA PEASE | Designer:

Tolerance Information

Page Sort: | POM Page Description: R.E.COTTON JERSEY | Tolerance Model: LADIES TOPS ALPHA | Create Date: 03/09/2020

Grading Information

Size Range: LADIES (000-20) REG&PETI... | Grading Size: 10 | Grading Method: Cumulative | Grading Model Name: LADIES 000-20 (REG & PETI... | Number Format: Fraction

Hide Grading: --Select-- | Vendor: | Dress Form 1: KOS-WMS0010-1509 | Dress Form 2: WPT0010-1604 | Customer: WOMENS | Business: SPORTSWEAR | Size Indicator: REGULAR/PETITE | Meas ID: LADIES TOPS ALPHA

More Actions | Save

- Create Fit Eval
- Add Points of M...
- Copy POM Code...
- Change Size Ran...**
- Change Tolerance
- Calculate Specifi...
- Create Size Set
- Multi Window
- POM Report
- Delete POM Cod...
- Copy

Update POM page- Missy Petite- Standard Conversion

- The Petite size range will populate after size 20 within the Missy POM page
 - Sizes 000P-20P are available
- No need to convert for size 8 or 12 base size. Petite conversion will populate correctly or all base sizes.
- Create fit eval for base Missy size only

***Missy Petite process only.**
Plus Petite will continue to be smart copied from Plus and converted to Plus Petite manually.

Size/Active Hide / Show										
	18	20	000P	00P	0P	2P	4P	6P	8P	10P
)(+)	<input checked="" type="checkbox"/>	<input checked="" type="checkbox"/>	<input checked="" type="checkbox"/>	<input checked="" type="checkbox"/>	<input checked="" type="checkbox"/>	<input checked="" type="checkbox"/>	<input checked="" type="checkbox"/>	<input checked="" type="checkbox"/>	<input checked="" type="checkbox"/>	<input checked="" type="checkbox"/>
	<input type="checkbox"/>	<input type="checkbox"/>	<input type="checkbox"/>	<input type="checkbox"/>	<input type="checkbox"/>	<input type="checkbox"/>	<input type="checkbox"/>	<input type="checkbox"/>	<input type="checkbox"/>	<input type="checkbox"/>
										0
										0
1/2	1	1 1/4		-2 3/4	-2 3/4	-2 1/2	-2 1/4	-2	-1 3/4	-1 1/2
1/2	1	1 1/4		-2 3/4	-2 3/4	-2 1/2	-2 1/4	-2	-1 3/4	-1 1/2
1/4	1/2	5/8		-3/4	-5/8	-1/2	-3/8	-1/4	-1/8	0
1/8	1/4	1/4		-3/8	-1/4	-1/4	-1/8	-1/8	0	0
1/8	1/4	3/8		-3/8	-3/8	-1/4	-1/4	-1/8	-1/8	0
1/8	1/8	1/4		-1/4	-1/4	-1/8	-1/8	-1/8	-1/8	0
1 1/4	1 1/2			1 7/8	1 1/2	1 1/4	7/8	5/8	1/4	0

Update Reg Fit Eval- Missy Petite Pattern Approval - CTD Level 2-3 No Petite sample required

- Once Missy/Reg size is fit approved, vendor will upload Missy to Petite pattern overlay image into Attachments tab of the REG Fit Evaluation:
 - CTD levels 3 and up will attach graded Petite pattern file and will document approval within Missy/Reg approved sample fit comments, then initiate Reg PP sample.
 - CTD level 2 will attach Reg to Petite overlay image w/ Petite pattern file and will defer to KTD for approval
 - KTD will document approval within Missy/Reg approved fit sample comments
- CTD to advise KTD via threaded message that pattern overlay is available for review and/or approval
- KTD/CTD should initiate Missy/Reg PP sample round **after** Petite pattern overlay approved.

Measurer 1 Fit Comments

Date: 3/31/2021
Sample Type: Fit
Sample Color:
KTD:
KTD FIT EVAL STATUS:

DESIGN AESTHETIC NEXT STEP:

KTD/CTD approval is pending review of sample/mock-up/photos of corrections uploaded in OnePLM for Design Aesthetic confirmation.

PATTERNS: Please attach a screenshot of before and after corrections with next sample fit round. Attach electronic pattern in One PLM as a .dxf or .dsn format. Fit sample patterns to be uploaded to the Fit Eval Page & Final Approved Fit or PP patterns to be uploaded to the Attachment Page. Pattern should include a 10in. X 10in. square.

GENERAL COMMENTS:
See comments and photos attached. KTD response is provided in CAPS next to CTD comments in Measurer 1 Comments.

1. Trim info
- Preferred suppliers must be used for zippers, buttons, elastic, thread, and interlining.
K-Link: <https://link.kohls.com/resources/subcategory/preferred-suppliers>
- Any other trim types can be non-preferred supplier but must go through Kohls Approved 3rd Party Lab for testing/approval prior to production.
K-Link: <https://link.kohls.com/resources/subcategory/private-and-exclusive-brands>
Link>Resources>Private and Exclusive Brands (view all)
2. Label Placement and attachment method - as marked

CONSTRUCTION COMMENTS:
1. Updated to chainstitch at neckline binding attach to achieve minimum neck stretch - approved via email w/ KTD on 3/22.

FIT COMMENTS:
1. See fit images for all comments.
2. Missy to Petite pattern overlay attached and Approved by CTD- 3/31/21

ion: 123406

Attachments Change Tracking 7

Attachments

Attachment No	Description
	MISSY/PETITE PATTERN OVERLAY-F1-SP20-WC01X015PS-VENDOR

ATTACHMENT

L R E VER

Vendor to follow pattern naming convention for pattern overlay attachment

CTD level 2: KTD will approve in Measurer 2 fit comments

CTD levels 3 & up will review and approve either pattern overlay or grading (sweaters specific)

FIT COMMENTS (SWEATERS):
1. Missy to Petite grading has been checked and approved by CTD- 3/31/21

Last updated: October 202

21

Update Reg Fit Eval- Missy Petite Pattern Approval - CTD Level 2-3 No Petite sample required

- APPLIES TO FOLLOWING PETITE STYLES:**
- Follows same styling as Missy Reg
 - NO exaggerated styling details - follows the standard Missy to Petite pattern conversion
 - **Vendor has CTD level 2 or 3**
 - **No Petite PP sample required**

Advanced Search: Fit Evaluation								
Fit Evaluation List								
<input type="checkbox"/>	Fit Eval Id	POM Page Description	Size	Fit Sample		Sample Type	Fit Status	Evaluation Type
<input type="checkbox"/>	123848	R.E.COTTON JERSEY	10	Sample 1		COUNTER SAMPLE	NOT APPROVED	FIT EVAL
<input type="checkbox"/>	123848	R.E.COTTON JERSEY	10	Sample 2		FIT SAMPLE	APPROVED	FIT EVAL

Petite pattern file and overlay are uploaded in the same Fit Evaluation as Missy REG on the Fit Approval Sample round before initiating the REG PP sample request.

Create Petite Fit Eval- Missy Petite- for PP approval w/ CTD Level 1 & Sweaters

- Once Missy/Reg size is fit approved. KTD creates a separate Petite Fit Evaluation for recording Petite PP sample.
- Petite Fit Evaluation will be created from Reg/Petite POM page, but has a **separate POM Page description (E) on the Fit Evaluation to differentiate as Petite size.**
- Petite Fit Evaluation will default to Base size 10 for sample 1. KTD Marks 'Not Evaluated' and initiates a Counter Sample in size 10P for recording Reg to Petite Pattern Overlay approval.
- KTD sends threaded message to request CTD Level 1 upload Reg vs Petite pattern overlay to attachments tab of Counter Sample Round.
- CTD sends threaded message to alert KTD when pattern overlay & pattern file has been uploaded.
- KTD reviews pattern overlay and if approved, marks Counter Sample round as 'Approved' then initiates Pre-Production Sample for approval.

Fit Evaluation: 123405

OverviewAttachmentsChange Tracking70

Parent Information

Style No	WMNS 10 GRADE EXERCISE SP22	Request No	00613184	Description	WMNS 10 GRADE EXERCISE SP22
Fiscal Season	SP21	Brand	SONOMA	Division	WOMENS
Development Stage	TEMPLATE	Style Status	NEW	Ecom Excl	N
Technical Designer	ANDREA PEASE	Designer			

Sample Selection

Fit Sample	Size	Sample #	Sample Type	Fit Status
All	10			
Sample 1	10			NOT EVAL
All	10P			
Sample 2	10P	1183761	PRE-PRODUCTION SAMPLE	APPROVED
Sample 1	10P	1183759	COUNTER SAMPLE	APPROVED

Evaluation Information

Agent	LI & FUNG TAIWAN	Vendor	ECLAT TEXTILE CO., ...	Factory	
Adopted Style Handoff	03/29/2021	PP Deadline	05/31/2021	UM	IN
Number Format	Fraction	POM Page Description	E.COTTON JERSEY		
Created On	2021-03-16 13:17:43	Modified on	2021-03-29 17:33:52	Fit Workflow Alert	63

Sample Information

Fit Sample	Sample 2	Sample Type	PRE-PRODUCTION SA...	Fit Status	APPROVED
Reason Code					
Date Received	03/31/2021	Ownership	KOHL'S TD	Decision Date	03/31/2021
Measurer 1		Measurer 2	JERILYN BOOTH	Actual Fabric/Material	--Select--
Actual Trim/Hardware	--Select--	Block/Last Used	--Select--	Actual Outsole	--Select--
Date Fit	03/31/2021	Fit With			

Attachments

Sort	Attachment No	Description
<input checked="" type="checkbox"/>		ATTACHMENT
		MISSY/PETITE PATTERN OVERLAY-F1-SP20-WC01X015PS-VENDOR

Vendor to follow pattern naming convention for pattern overlay attachment

Create Petite Fit Eval- Missy Petite- for PP approval w/ CTD Level 1 & Sweaters

APPLIES TO FOLLOWING PETITE STYLES:

- Follows same styling as Missy Reg
- NO exaggerated styling details - follows the standard Missy to Petite pattern conversion
- **Vendor has CTD level 1**
- **All Sweaters**
- **Petite PP sample required**

Missy Reg & Petite Fit Evaluations are generated from the SAME POM page.

▼ PLM Points of Measurement

View Fit Evals | Create Fit Eval | Add Points of Measure | Copy POM Code(s) | Change Size Range | Change Tolerance | Calculate Specification | Multi Window | POM

▼ Points of Measurement | < 1 2 3 4 > | Go To R.E.COTTON JERSEY

Base Style Information

Image

Description
WMNS 10 GRADE EXERCISE SP22

Development Stage

Style Status

Technical Designer

Designer

TEMPLATE

NEW

ANDREA PEASE

Tolerance Information

Page Sort

Create Date

Hide Grading

Dress Form 1

Customer

Size Indicator

03/09/2020

--Select--

KOS-WMS0010-1509

WOMENS

REGULAR/PETITE

POM Page Description

Tolerance Model

Vendor

Dress Form 2

Business

Product Type

R.E.COTTON JERSEY

LADIES TOPS ALPHA

WPT0010-1604

SPORTSWEAR

--Select--

Grading Information

Size Range

Grading

Grading Method

UM

Material 3

Material 5

Material 7

Material 9

LADIES (000-20) REG&PETI...

10

Cumulative

IN

Fit Evaluation List

<input type="checkbox"/>	Fit Eval Id	POM Page Description	Size	Fit Sample	Sample Type	Fit Status	Evaluation Type
<input type="checkbox"/>	123848	R.E.COTTON JERSEY	10	Sample 1	COUNTER SAMPLE	NOT APPROVED	FIT EVAL
<input type="checkbox"/>	123848	R.E.COTTON JERSEY	10	Sample 2	FIT SAMPLE	APPROVED	FIT EVAL
<input type="checkbox"/>	123405	E.COTTON JERSEY	10	Sample 1		NOT EVALUATED	FIT EVAL
<input type="checkbox"/>	123405	E.COTTON JERSEY	10P	Sample 2	PRE-PRODUCTION SAMPLE	APPROVED	FIT EVAL
<input type="checkbox"/>	123405	E.COTTON JERSEY	10P	Sample 1	COUNTER SAMPLE	APPROVED	FIT EVAL

Petite pattern file and overlay are uploaded to the a separate Petite Fit Evaluation that is pulling from same POM page as the Missy Reg.

Create Missy Petite Pom Page-‘Exaggerated Details’

After Missy/Reg is fit approved:

- Update size range & Size Indicator on Reg POM page
 - Hide petite sizes on Missy/Reg POM page
 - Smart copy Missy/Reg POM page and [rename following OnePLM POM naming convention](#)
 - Update base size to 8P, 10P or 12P
 - [Reveal only petite sizes](#)
 - [Change Dressform from Regular to Petite form](#)
 - [Change Size Indicator from Regular to Petite](#)
 - [Replace A001-LA Ladies Alpha Sizes w/ A001-LP Ladies Petite Alpha POM](#)
 - Create fit eval from Petite POM page. Mark Counter Sample Not Evaluated and request 1st fit.
- TD/CTD Level 3 & up
- Reviews Petite sample with either 3D or physical sample to compare proportions between Reg & Petite
- CTD Levels 0-2:
- Submit sample or 3D asset to KTD for review/approval
- If standard Petite conversion is still applicable for exaggerated styling, approve.
 - Add POM A000 - “Petite spec follows standard conversion, combine with REG POM page next season”
 - If Petite proportions need to be adjusted, revise specs and request PP sample for confirmation.
 - Add POM A000 – “Petite spec does not follow standard conversion” to POM page.

Tolerance Information

Page Sort:

Create Date: 03/23/2021

Hide Grading: --Select--

Customer: WOMENS

Size Indicator: PETITE

Petite POM page

POM Page Description: E.COTTON JERSEY

Tolerance Model: LADIES TOPS ALPHA

Vendor:

Dress Form 1: WPT0010-1604

Dress Form 2:

Business: SPORTSWEAR

Meas ID: LADIES TOPS ALPHA

Points of Measure [Hide / Show](#)

HTM	Code	POM Description	Tol(-)	Tol(+)	00P	0P	2P
<input type="checkbox"/>	A000				<input checked="" type="checkbox"/>	<input checked="" type="checkbox"/>	<input checked="" type="checkbox"/>
<input type="checkbox"/>	A001-LA00...				<input type="checkbox"/>	<input type="checkbox"/>	<input type="checkbox"/>
<input type="checkbox"/>	A008				<input type="checkbox"/>	<input type="checkbox"/>	<input type="checkbox"/>
<input type="checkbox"/>	A300				<input type="checkbox"/>	<input type="checkbox"/>	<input type="checkbox"/>
<input type="checkbox"/>	A300	LEN HPS TO HEM	-1/2	1/2	<input type="checkbox"/>	<input type="checkbox"/>	<input type="checkbox"/>
<input type="checkbox"/>	A100	NK WIDTH@SFAM/EDGE	-1/4	1/4	<input type="checkbox"/>	<input type="checkbox"/>	<input type="checkbox"/>

Hide / Show Sizes

Select Size(s) to Hide/Deselect Size(s) to Show

☒ Select All

☒ 000 ☒ 00 ☒ 0 ☒ 2 ☒ 4 ☒ 6 ☒ 8 ☒ 10 ☒ 12 ☒ 14

☒ 16 ☒ 18 ☒ 20 ☐ 000P ☐ 00P ☐ 0P ☐ 2P ☐ 4P ☐ 6P ☐ 8P

☐ 10P ☐ 12P ☐ 14P ☐ 16P ☐ 18P ☐ 20P

OK

Points of Measure [Hide / Show](#)

Code	POM Description
A000	PETITE SPEC DOES NOT FOLLOW STAND...
A001-LP 00...	PETITE ALPHA SIZE PXXS(000-00)PX5(0-2)...

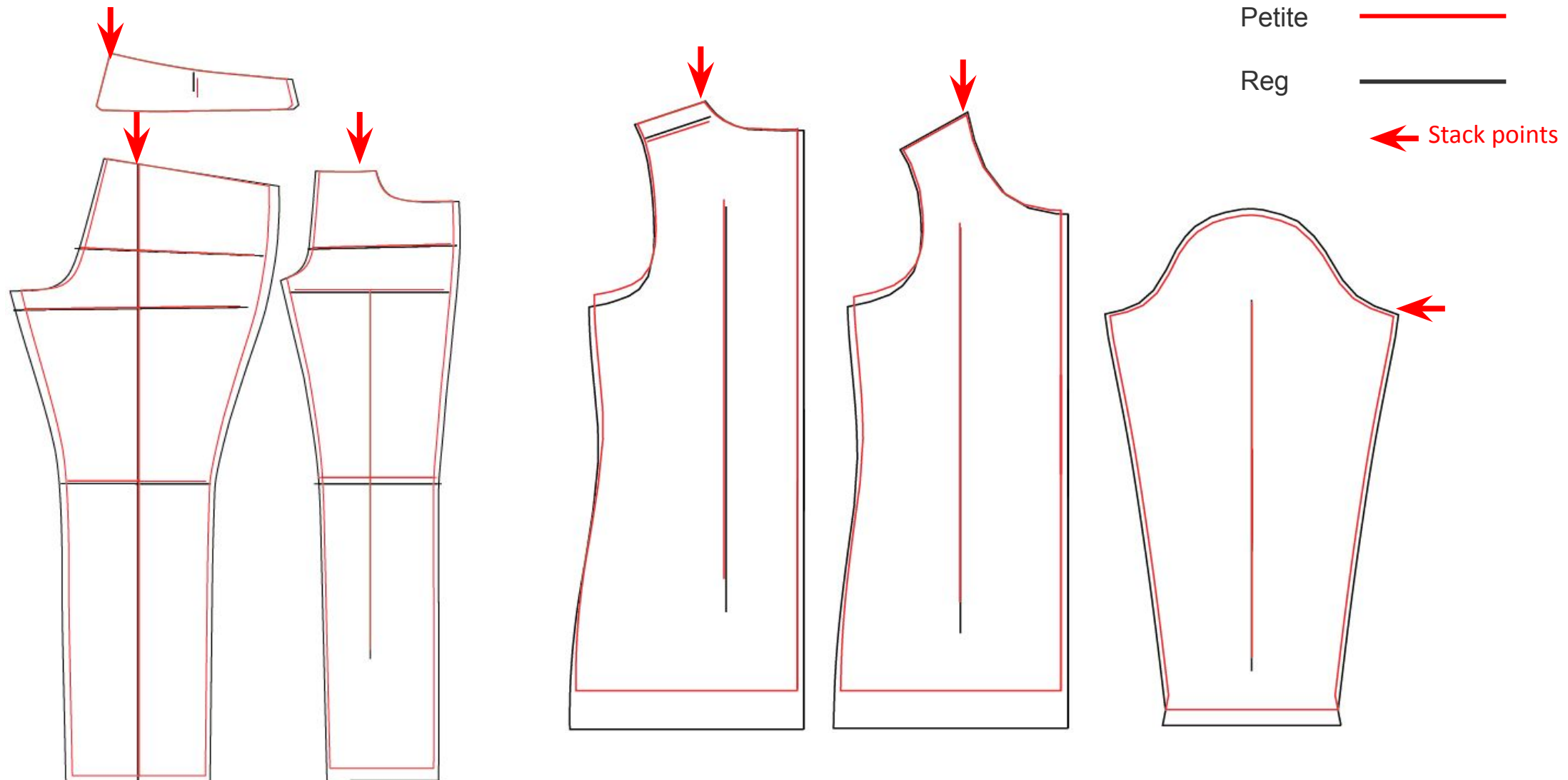
Attachments For Pattern & PP Approval

WOMEN'S GLOBAL TECHNICAL DESIGN TEAM

KOHL'S

Pattern Overlay Example

Provide a screenshot of pattern conversion overlay to validate the extended size pattern shape before proceeding with any sampling.



Exception Based: Reviewing PP sample: Extended Size Comparison Example

When comparing Extended size PP sample back to the Reg/Plus approval, always try to compare side by side on dressform as in shown example:

Womens Reg and Petite should have the same fit aesthetic and look the same when on the form.

- Compare side by side on the form.
- Front/Side/Back comparison images should be uploaded on the Fit Eval Attachment page

Body length hits at same place on the form.

*Note: the low hip tick mark on the dress form has a $\frac{1}{4}$ " discrepancy from the missy to the petite (the petite tick mark is $\frac{1}{4}$ " too low). Follow the conversion.

Missy



Petite



Neckline shapes look the same, and there is the same amount of space from neck trim edge to neckline seam on the form

Same amount of ease over body



Sleeve length hits at the same place on the form. (Both samples hit $\frac{1}{4}$ " past end of arm)

Women's Plus

Plus Petite, Plus Curvy, Plus Straight,
Shorts, Longs, & Talls

Dress form: Women's Plus (Regular), Petite, Curvy, Straight

Plus (Regular)
KOS-WPL0018-1511



Plus Petite
Not Available

Plus Curvy
KOS-WPL018C-1805



Plus Straight
KOS-WPL018-1805



Extended Size Procedure for New Style development

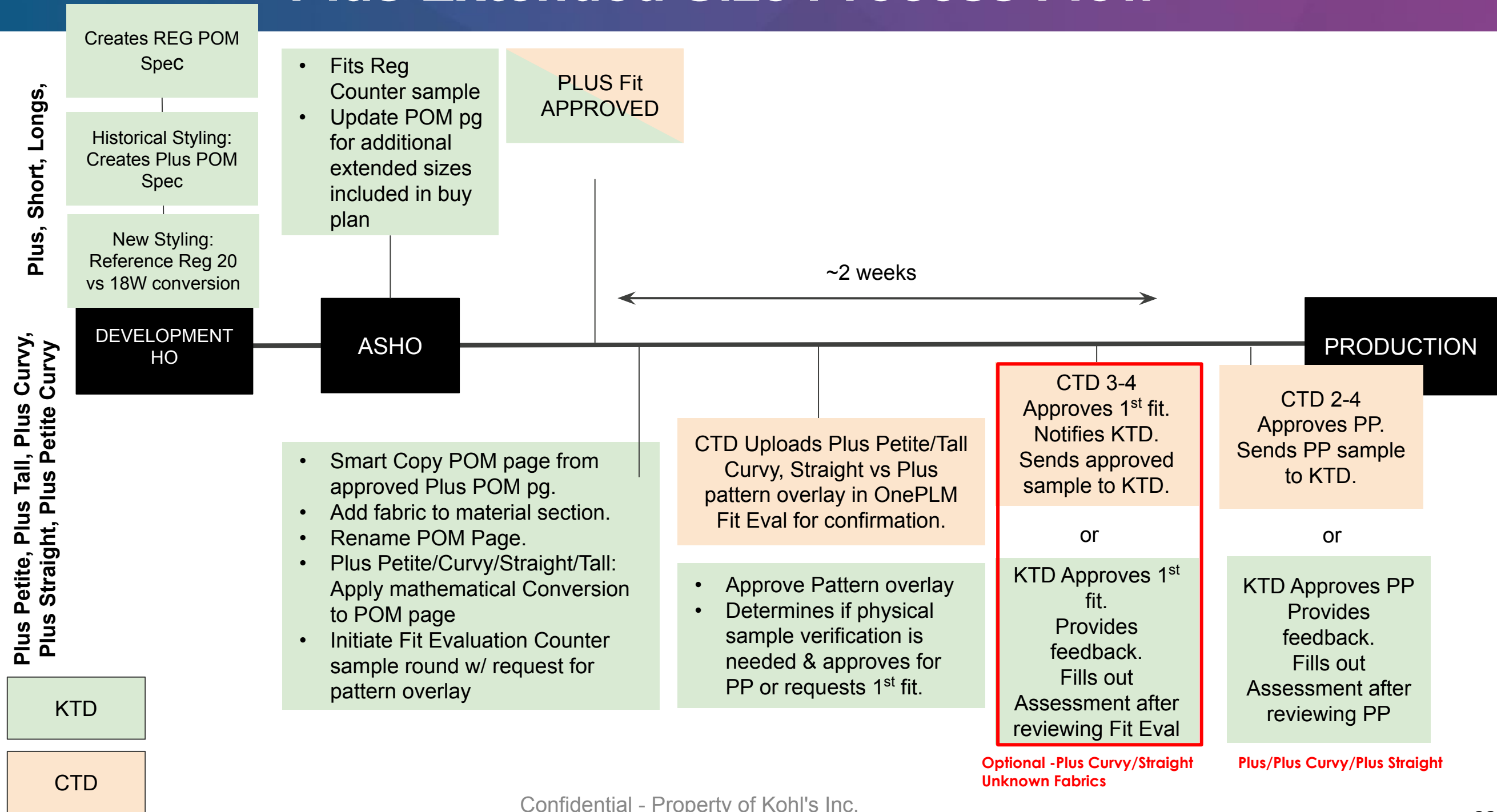
Special Size Range	Costing POM/Spec Timing	Fit Procedure	Required Samples
Women's Plus: Same styling as Missy Reg	New styles based on historical fit/styling: POM page is created.	Initially Fit by Kohls TD, then empowered to CTD no later than PP stage.	<ul style="list-style-type: none"> Fit sample required PP sample required
	New style aesthetics not following historical fit/styling: <ul style="list-style-type: none"> Follow conversion spec from Size XXL with Plus Grade on Attachments tab. Plus POM will be created after REG ASHO/Counter Sample comments finalizing Design/Fit intent details. 		
Women's Plus: Exclusive Styling	POM page created at time of Design Hand-off	Initially Fit by Kohls TD, then empowered to CTD no later than PP stage.	<ul style="list-style-type: none"> Fit sample reviewed by KTD w/ Design - if design aesthetic is not already established PP sample required
Plus Curvy/Straight: Same styling as Plus	Cost based on provided conversion or historical style. Curvy/Straight POM page will be created off of fit approved Plus POM page.	Known Fabrics: <ul style="list-style-type: none"> After Plus style is fit approved, KTD smart copy PLUS POM page to create Plus Curvy/Straight POM page. Update POM page description and Size Indicator. KTD Apply Plus Curvy/Straight Conversion to Plus Curvy/Straight POM Base size spec (CTD Level 3 have KTD verify this step). KTD Create Plus Curvy/Straight Fit Evaluation from Plus Curvy/Straight POM page. KTD Determine if fabrication stretch requires physical sample verification of conversion. (see Unknown fabrics below). KTD Initiate Counter Sample round & request Plus to Plus Curvy/Straight Pattern comparison CTD upload Plus to Plus Curvy/Straight Pattern Comparison Counter Sample round on fit evaluation for KTD for review & approval. Counter sample = approved for approved pattern comparison Initiate a PP sample for physical sample confirmation. Plus Curvy: Add POM A000 – “Curvy spec follows Rigid OR High Stretch Conversion” to POM page. 	<ul style="list-style-type: none"> No fit sample required. PP sample required

Extended Size Procedure for New Style development

Special Size Range	Costing POM/Spec Timing	Fit Procedure	Required Samples
Plus Curvy/Straight: Same styling as Plus	Cost based on provided conversion or historical style. Curvy/Straight POM page will be created off of fit approved Plus POM page.	Unknown Fabrics: <ul style="list-style-type: none"> Counter Sample = Not Approved after reviewing curvy/straight pattern comparison. Initiate Fit sample for fabric confirmation. Fit sample = approved. Initiate PP sample CTD uploads approved Curvy/Straight PP pattern to OnePLM Attachments Tab 	<ul style="list-style-type: none"> Fit sample required PP sample required
Women's Plus Petites / Plus Petite Curvy / Plus Tall: Same styling as Plus	Cost based conversion spec shown for Plus and following same size/grade as Plus. Plus Petite/ Plus Petite Curvy POM page will be created off of fit approved Plus POM page.	<ul style="list-style-type: none"> Plus Petite/Plus Petite Curvy/Plus Tall mathematical conversion applied to final Plus pattern. Plus to Plus Petite/Plus Petite Curvy/Plus Tall Pattern Comparison uploaded for KTD for review & approval. 	<ul style="list-style-type: none"> Pattern overlay required No sample required.
Women's Plus, Short, Long	Additional POMs are added to Plus POM page when extended size is requested	Shorts, Longs, & Talls are a mathematical conversion applied to final pattern/marker for production.	No samples required.

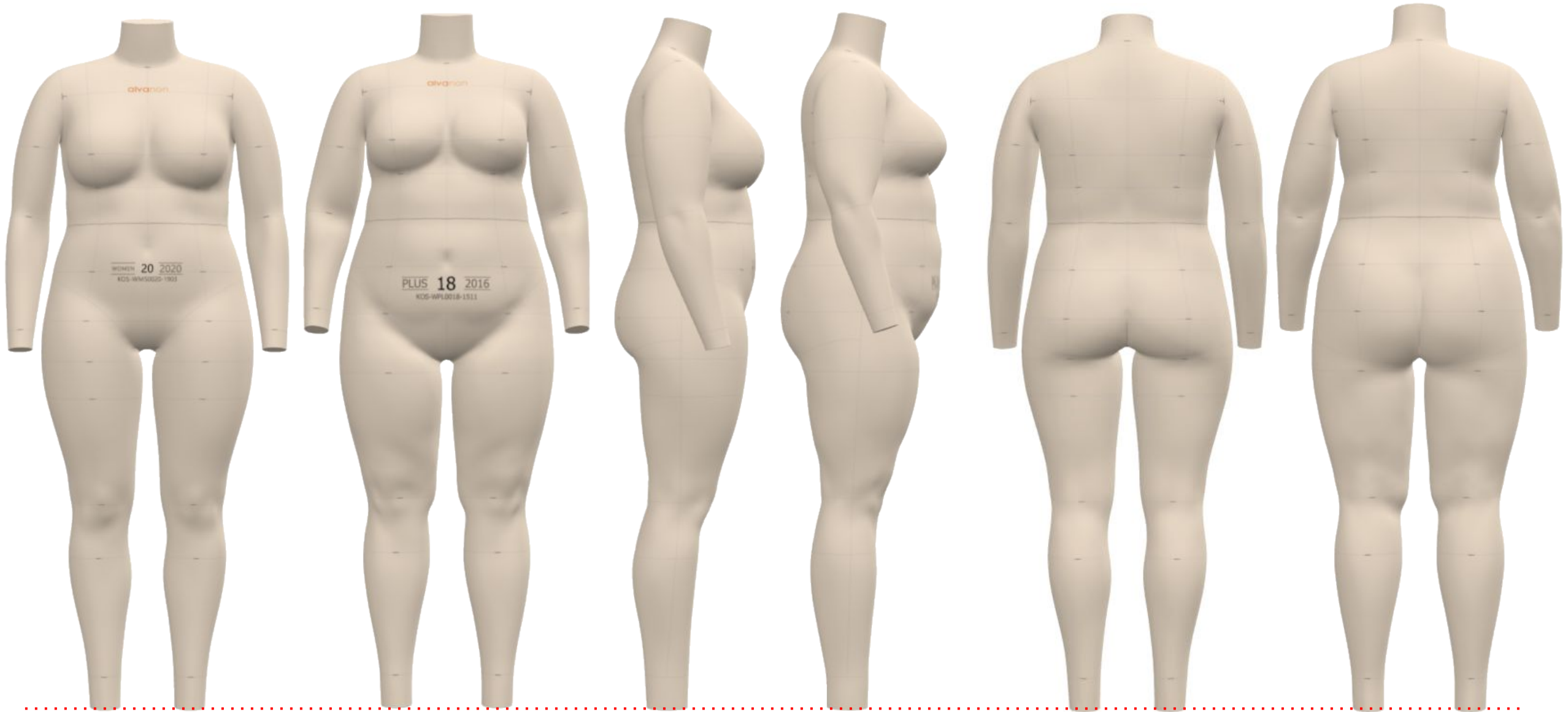
Carry-Over styles: Costing POM is copied from previously approved season and fit approval given if no changes to fit, vendor, fabric

Plus Extended Size Process Flow



Missy Reg 20 to Plus 18

Plus has different bust-waist-hip ratio and overall shape than size Missy 20 requiring a different pattern starting point



PLUS POM Costing Guidance - for New Styling w/ No Historical reference

Cost Plus based on:

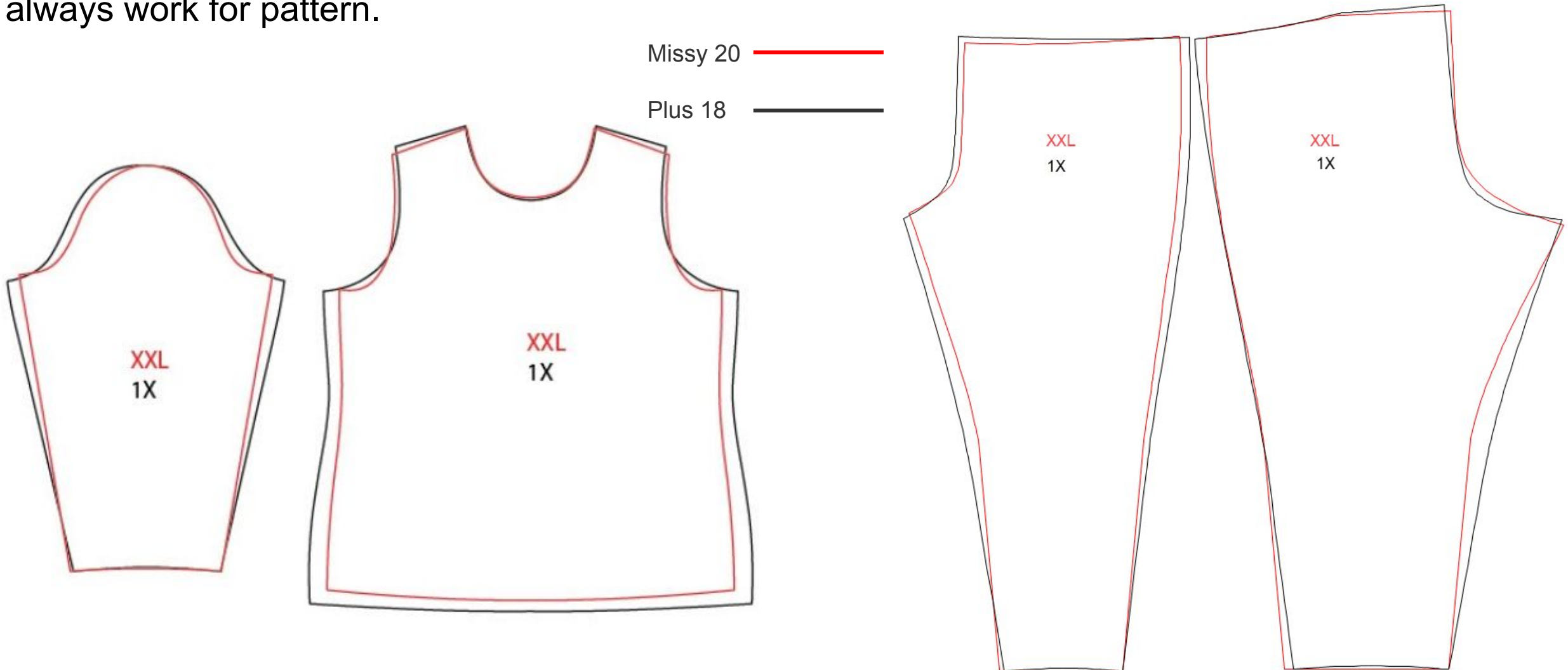
- Size XXL given on REG POM page with [Plus Grade/POM conversion](#) shown in attachment (by category)
- Plus POM page will be created after REG ASHO/Counter Sample comments finalizing Design/Fit intent details

POM Page Description:				P.SZ18.COSTING			
Brand	SONOMA	Division	INTIMATES	Customer	WOMENS	Tech Desig	
Grade Table		LADIES PLUS					
P/S	POM Code	POM Description	TOL (-)	TOL (+)	18W	22W	26W
P	A001- LAP14-30	LADIES PLUS ALPHA SIZES 0X(14W) 1X(16W-18W) 2X(20W-22W) 3X(24W-26W) 4X(28W-30W)					
	A000	REFERENCE SZ XXL & 1X CONVERSION ON ATTACHMENTS FOR COSTING GUIDANCE					

Missy XXL(20) Pattern vs. Plus 18

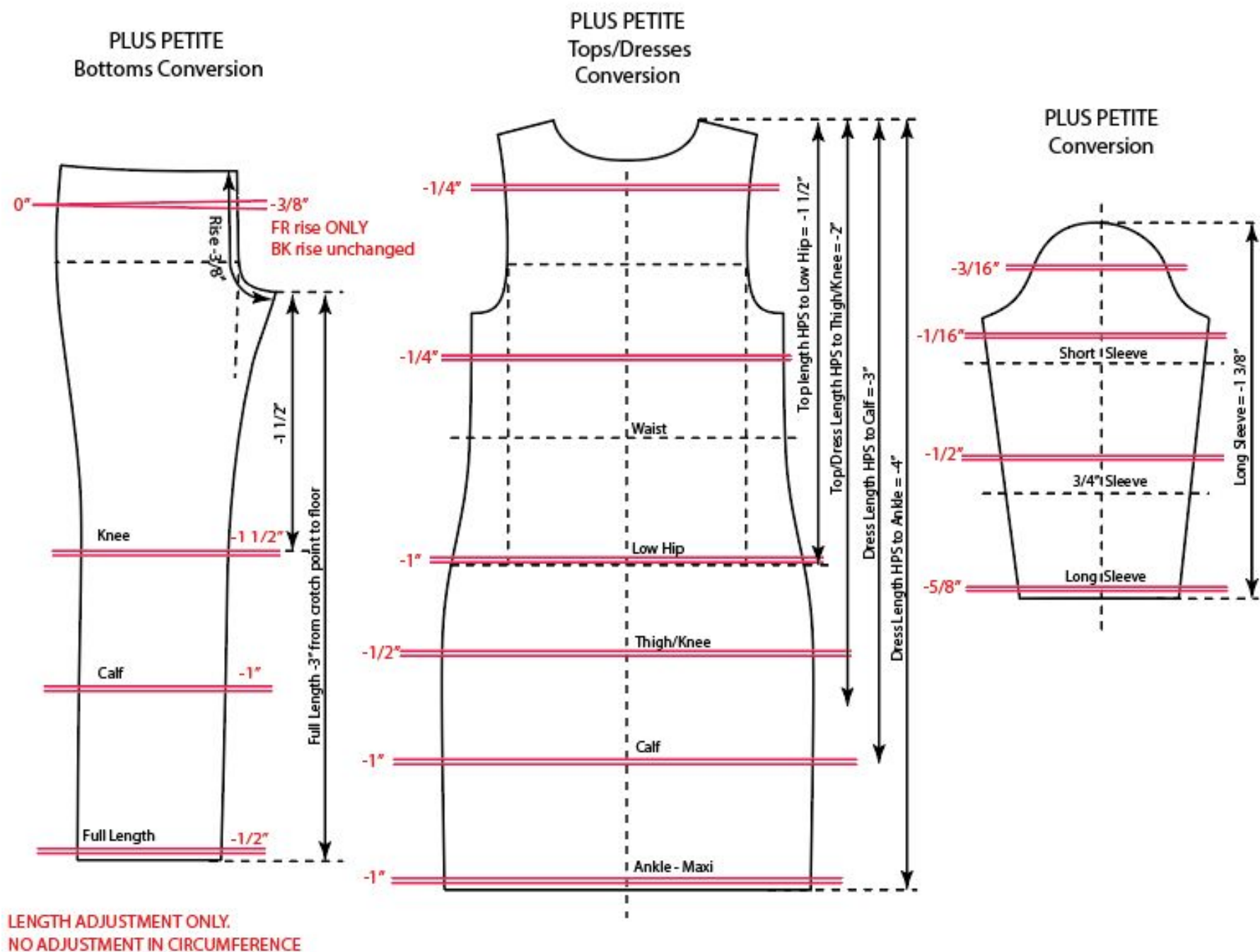
Goal:

Develop and execute well balanced and proportionate fit for the Plus customer. Similar to Missy, start pattern development with a proven Plus body since proportions are different, conversion doesn't always work for pattern.



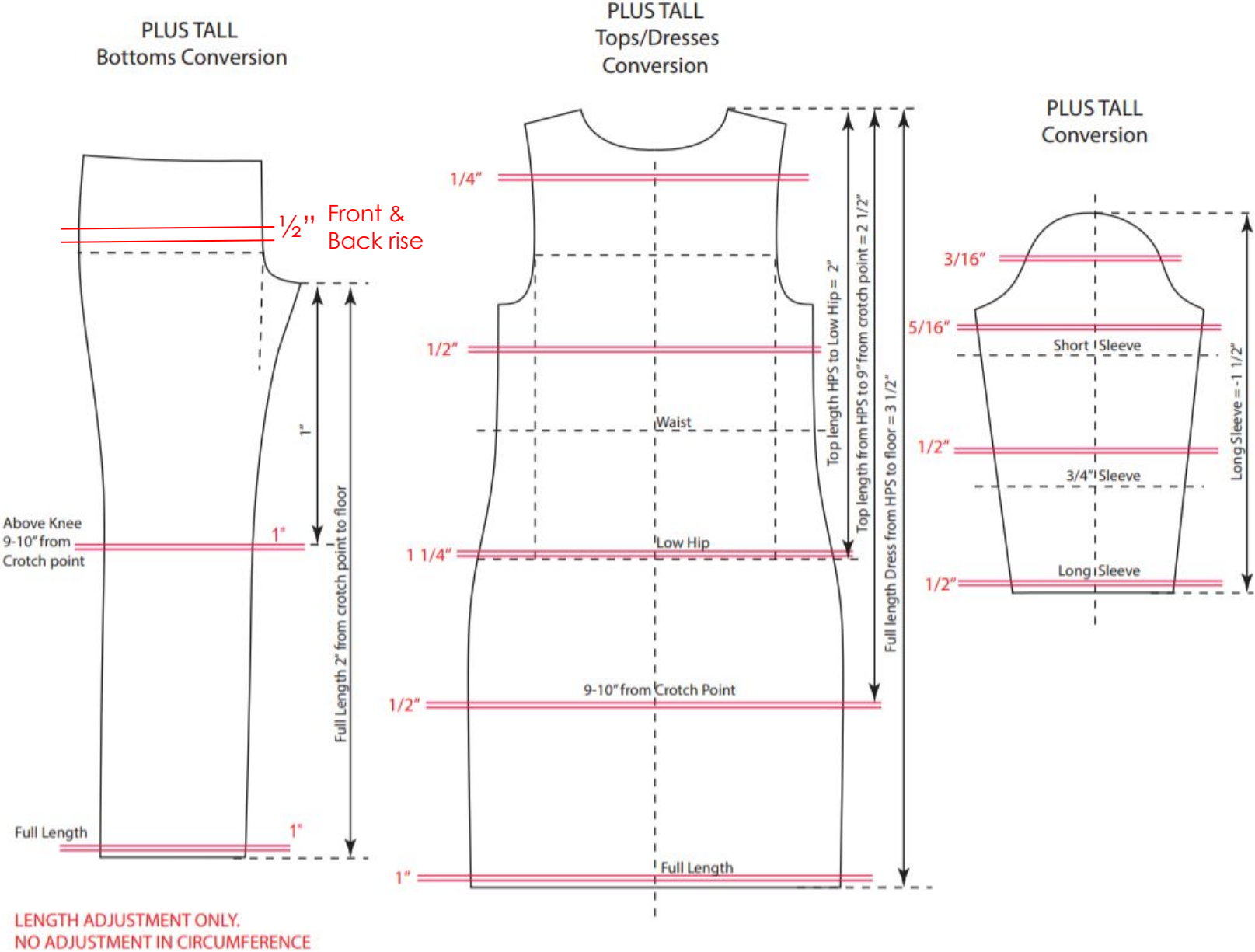
Women's Plus to Plus Petite Pattern Adjustment

See [Women's Extended Size Conversions](#) Plus to Plus Petite for measurement conversion



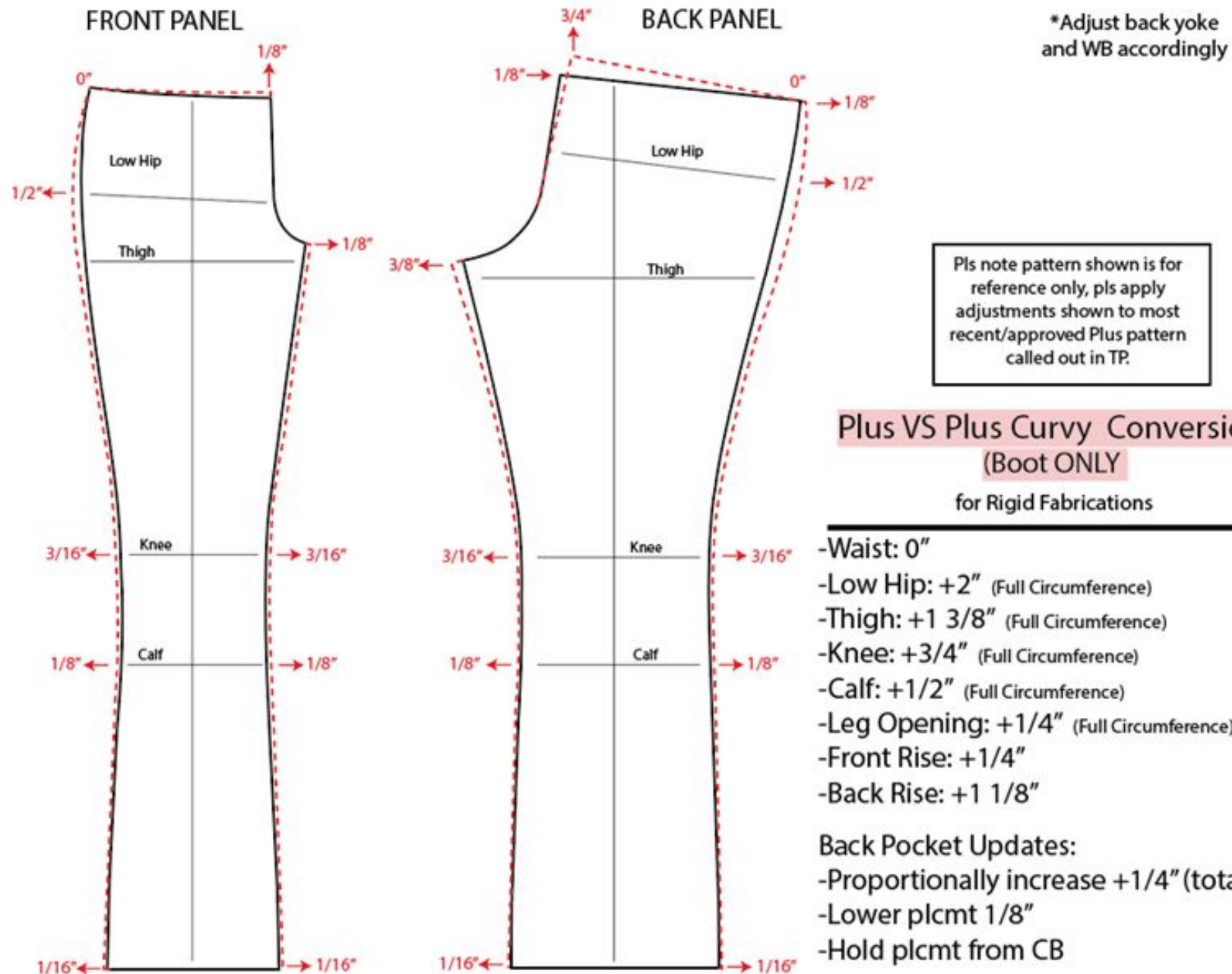
Women's Plus to Plus Tall Pattern Adjustment

See [Women's Extended Size Conversions](#) Plus to Plus Tall for measurement conversion



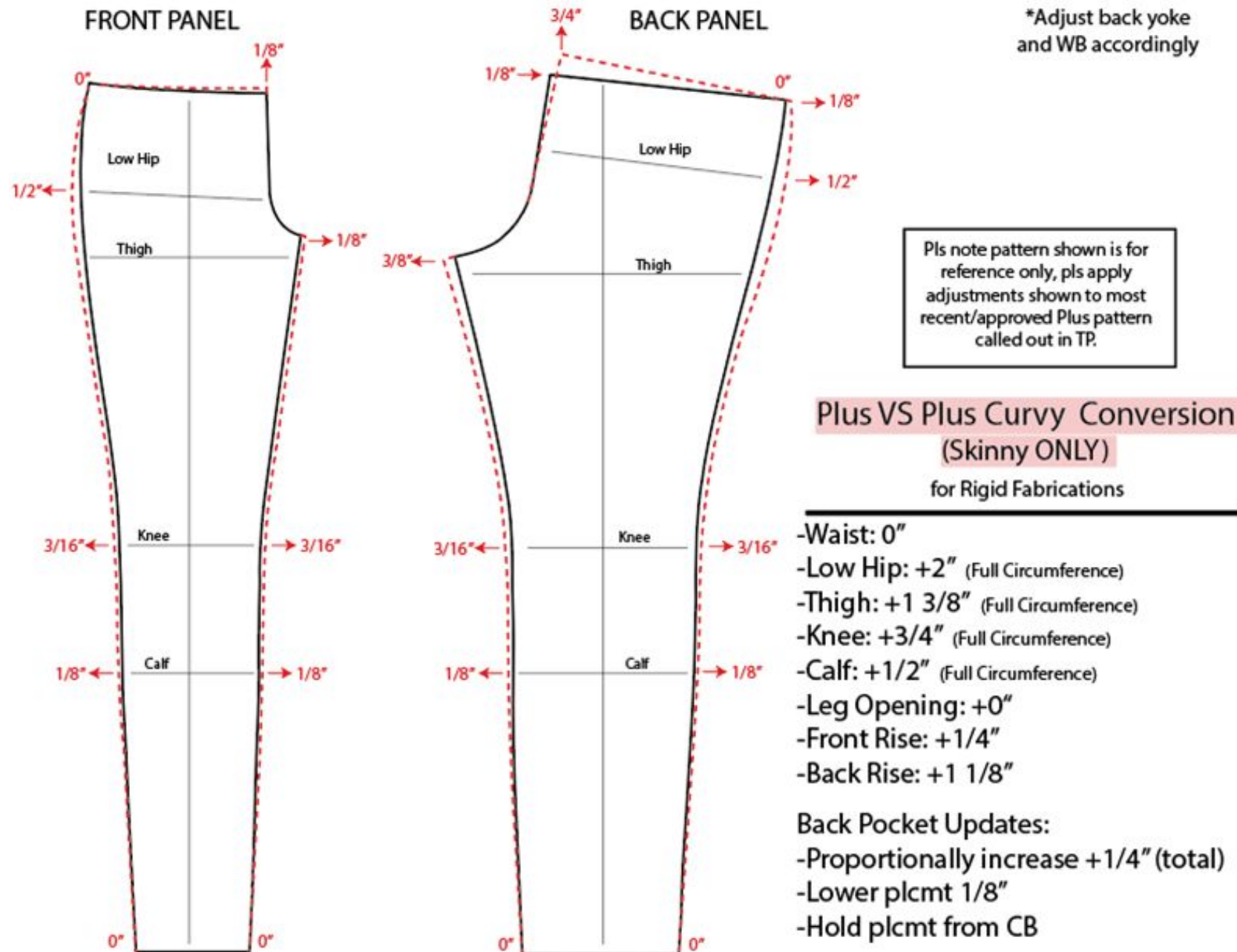
Plus to Plus Curvy Pattern Adjustment – Rigid Fabric-Boot

See [Women's Extended Size Conversions](#) Plus to Plus Curvy for measurement conversion



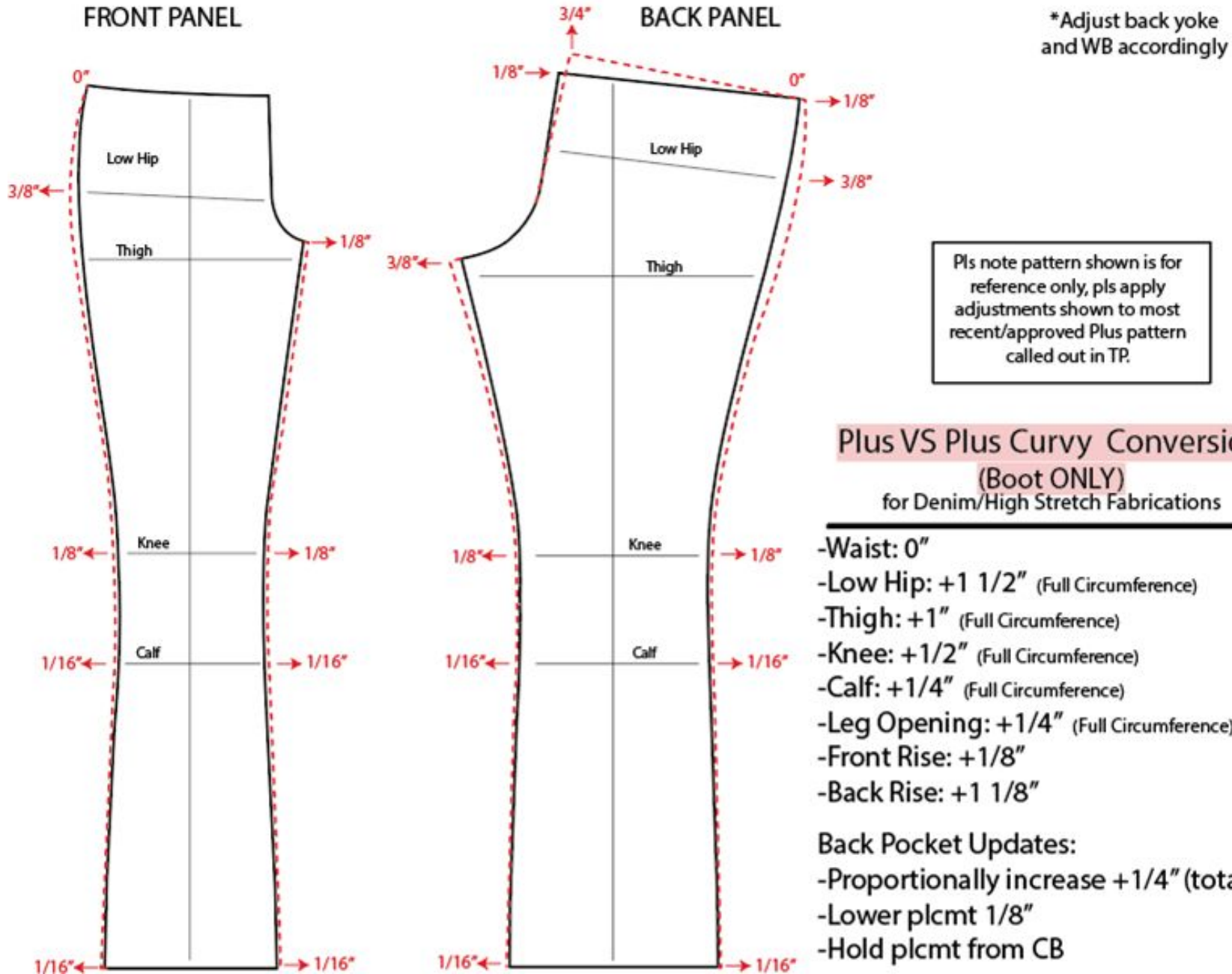
Plus to Plus Curvy Pattern Adjustment – Rigid Fabric-Skinny

See [Women's Extended Size Conversions](#) Plus to Plus Curvy for measurement conversion



Plus to Plus Curvy Pattern Adjustment – High Stretch Fabric-Boot

See [Women's Extended Size Conversions](#) Plus to Plus Curvy for measurement conversion



Plus VS Plus Curvy Conversion (Boot ONLY) for Denim/High Stretch Fabrications

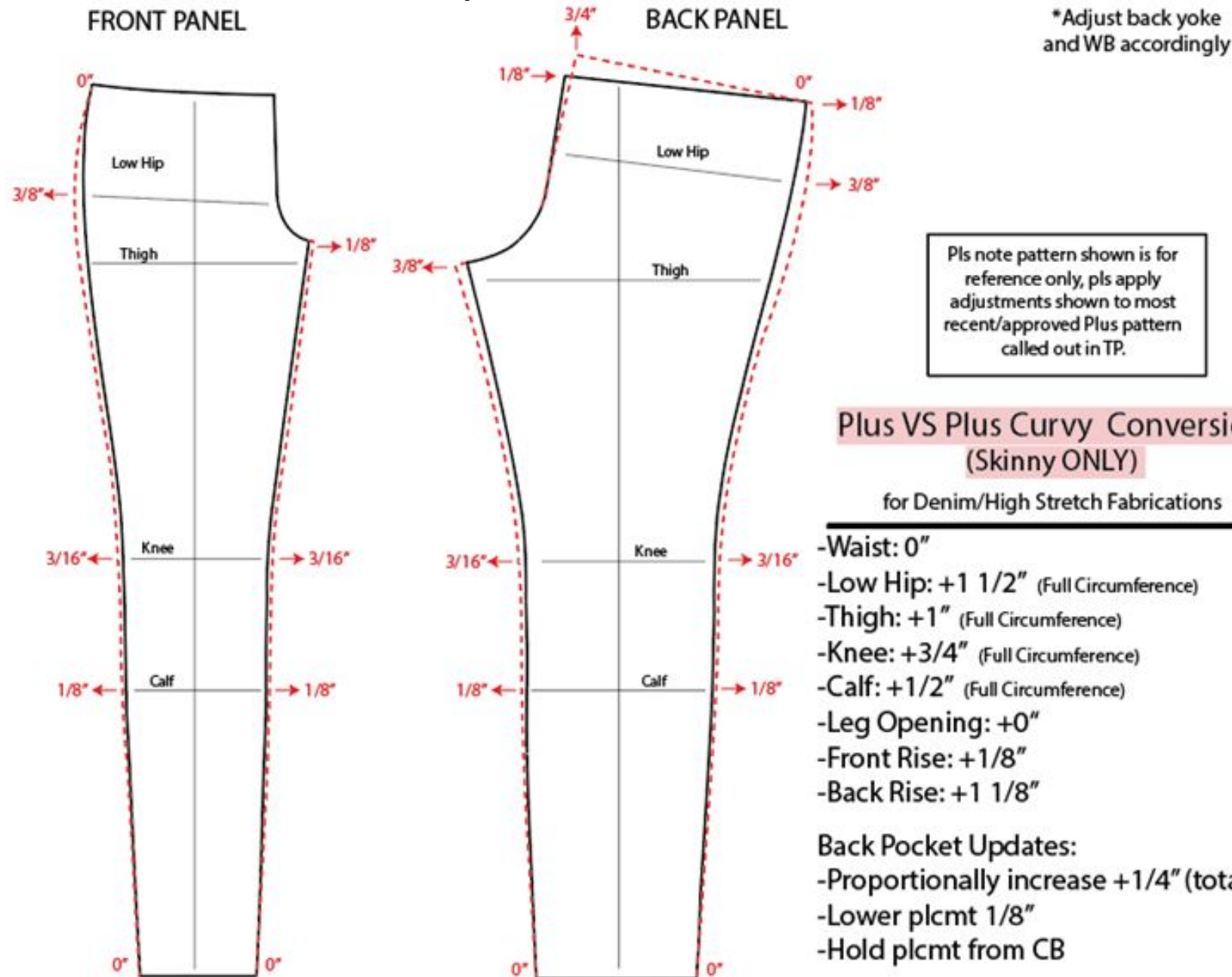
- Waist: 0"
- Low Hip: +1 1/2" (Full Circumference)
- Thigh: +1" (Full Circumference)
- Knee: +1/2" (Full Circumference)
- Calf: +1/4" (Full Circumference)
- Leg Opening: +1/4" (Full Circumference)
- Front Rise: +1/8"
- Back Rise: +1 1/8"

Back Pocket Updates:

- Proportionally increase +1/4" (total)
- Lower plcmt 1/8"
- Hold plcmt from CB

Plus to Plus Curvy Pattern Adjustment – High Stretch Fabric-Skinny

See [Women's Extended Size Conversions](#) Plus to Plus Curvy for measurement conversion



PLUS COSTING CONVERSIONS

Women's Plus KNIT TOP XXL to 1X CONVERSIONS

PLUS ACTIVE TOP Grade (Tek Gear Sz10) Average Spec Differences XXL vs 1X for Costing Guidance

Table	LADIES PLUS	Reference 20 on REG POM pg & apply adjustment below for 1X spec						
POM Code	POM Description	TOL (-)	TOL (+)	18W	22W	26W	30W	34W
A001-LAP14-34	LADIES PLUS ALPHA 0X(14W)1X(16W-18W)2X(20W-22W)3X(24W-26W)4X(28W-30W)5X(32W-34W)			1X XXL 20	2X	3X	4X	5X
A300	LEN HPS TO HEM > 26" (REG LGTH=28" OR CRTCH)	-1/2	1/2	0 +1/2	1	2	3	4
A300	LEN HPS TO HEM <=26" (CROP LGTH)	-1/2	1/2	0 +1	1	2	3	4
A100	NK WIDTH@SEAM/EDGE	-1/4	1/4	0	1/4	1/2	3/4	1
A110	FRT NK DROP@SEAM/EDGE	-1/8	1/8	0	1/8	1/4	3/8	1/2
A120	BK NK DROP@SEAM/EDGE	-1/8	1/8	0	1/8	1/8	1/4	3/8
A250	ACROSS SHOULDER	-3/8	3/8	0 -3/4	1	2	3	4
A253	XFRT/BK PLCMT #" FM HPS	0	0	0	1/8	1/4	3/8	1/2
A254	ACROSS FRONT	-3/8	3/8	0 -3/4	1	2	3	4
A255	ACROSS BACK	-3/8	3/8	0 -3/4	1	2	3	4
A260H	CHEST 1" BLW AH RLXD-1/2 MEAS	-1/2	1/2	0 +1	2	4	6	8
A272HPS	WAIST PLCMT FM HPS	0	0	0	1/2	7/8	1 1/8	1 3/8
A270H	WAIST RLXD-TOPS-1/2 MEAS	-1/2	1/2	0 +1	2	4	6	8
A290H	SWEEP RLXD@EDGE HEM-1/2 MEAS	-1/2	1/2	0+1 1/2	2	4	6	8
A330	ARMHOLE DROP-FROM HPS	-1/4	1/4	0	1/4	1/2	3/4	1
A340H	UA/MUSCLE 1" BLW AH-1/2 MEAS	-1/4	1/4	0 +1/2	5/8	1 1/8	1 5/8	2 1/4
A352H-1B	SLV OPENING RLXD-1/2 MEAS S/SLV	-3/8	3/8	0 +1/2	5/8	1 1/8	1 5/8	2 1/8
A360-1B	SLV LEN FROM CB NK-S/SLV	-3/8	3/8	0	5/8	1 3/8	2 1/8	2 7/8
A352H-4W	SLV OPENING RLXD-1/2 MEAS. L/SLV	-1/4	1/4	0	1/4	1/2	3/4	1
A360-4W	SLV LEN FROM CB NK-L/SLV	-1/2	1/2	0 -1/4	3/4	1 1/2	2 1/4	3

*Measurements given in **RED** are adjustments needed from size XXL(20) to convert to a size 1X(18W).



PLUS SONOMA and C&B KNIT TOPS Average Spec differences XXL vs 1X

M1	KOS-WPL0018-1511				FORM2			
Table	LADIES PLUS Reference 20 on REG POM pg & apply adjustment below for 1X spec							
POM Code	POM Description	TOL (-)	TOL (+)	18W	22W	26W	30W	34W
A001-LAP14-34	LADIES PLUS ALPHA 0X(14W)1X(16W-18W)2X(20W-22W)3X(24W-26W)4X(28W-30W)5X(32W-34W)			1X XXL 20	2X	3X	4X	5X
A300	LEN HPS TO HEM > 26" (REG LGTH=28" OR CRTCH)	-1/2	1/2	0 +3/4	1	2	3	4
A300	LEN HPS TO HEM <=26" (CROP LGTH)	-1/2	1/2	0	1	2	3	4
A100	NK WIDTH@SEAM/EDGE	-1/4	1/4	0 -1/4	1/4	1/2	3/4	1
A110	FRT NK DROP@SEAM/EDGE	-1/8	1/8	0	1/8	1/4	3/8	1/2
A120	BK NK DROP@SEAM/EDGE	-1/8	1/8	0	1/8	1/8	1/4	3/8
A250	ACROSS SHOULDER	-3/8	3/8	0 -3/8	1	2	3	4
A253	XFRT/BK PLCMT #" FM HPS	0	0	0	1/8	1/4	3/8	1/2
A254	ACROSS FRONT	-3/8	3/8	0 +3/8	1	2	3	4
A255	ACROSS BACK	-3/8	3/8	0 +1/8	1	2	3	4
A260H	CHEST 1" BLW AH RLXD-1/2 MEAS	-1/2	1/2	0 +3/4	2	4	6	8
A272HPS	WAIST PLCMT FM HPS	0	0	0 -1/2	1/2	7/8	1 1/8	1 3/8
A270H	WAIST RLXD-TOPS-1/2 MEAS	-1/2	1/2	0 +1	2	4	6	8
A290H	SWEEP RLXD@EDGE HEM-1/2 MEAS	-1/2	1/2	0 +1 1/2		4	6	8
A330	ARMHOLE DROP-FROM HPS	-1/4	1/4	0 +1/2	1/4	1/2	3/4	1
A340H	UA/MUSCLE 1" BLW AH-1/2 MEAS	-1/4	1/4	0 +1/2	5/8	1 1/8	1 5/8	2 1/4
A352H-1B	SLV OPENING RLXD-1/2 MEAS S/SLV	-3/8	3/8	0 +1/4	5/8	1 1/8	1 5/8	2 1/8
A360-1B	SLV LEN FROM CB NK-S/SLV	-3/8	3/8	0 +1 3/4	5/8	1 3/8	2 1/8	2 7/8
A352H-4W	SLV OPENING RLXD-1/2 MEAS. L/SLV	-1/4	1/4	0 1/4	1/4	1/2	3/4	1
A360-4W	SLV LEN FROM CB NK-L/SLV	-1/2	1/2	0 -1/4	3/4	1 1/2	2 1/4	3

*Measurements given in **RED** are adjustments needed from size XXL(20) to convert to a size 1X(18W).



Women's Plus SWEATERS XXL to 1X CONVERSIONS

PLUS SWEATERS (Sonoma & C&B) Average Spec differences XXL vs 1X

M1	KOS-WPL0018-1511				FORM2			
Table	LADIES PLUS Reference 20 on REG POM pg & apply adjustment below for 1X spec							
POM Code	POM Description	TOL (-)	TOL (+)	18W	22W	26W	30W	34W
A001-LAP14-34	LADIES PLUS ALPHA 0X(14W)1X(16W-18W)2X(20W-22W)3X(24W-26W)4X(28W-30W)5X(32W-34W)			1X XXL 20	2X	3X	4X	5X
A300	LEN HPS TO HEM > 26" (REG LGTH=28" OR CRTOCH)	-1/2	1/2	0 +3/4	1	2	3	4
A300	LEN HPS TO HEM <=26" (CROP LGTH)	-1/2	1/2	0 +1 1/2	1	2	3	4
A100	NK WIDTH@SEAM/EDGE	-1/4	1/4	0	1/4	1/2	3/4	1
A110	FRT NK DROP@SEAM/EDGE	-1/8	1/8	0	1/8	1/4	3/8	1/2
A120	BK NK DROP@SEAM/EDGE	-1/8	1/8	0	1/8	1/8	1/4	3/8
A250	ACROSS SHOULDER	-3/8	3/8	0 - 3/8	1	2	3	4
A253	XFRT/BK PLCMT #" FM HPS	0	0	0	1/8	1/4	3/8	1/2
A254	ACROSS FRONT	-3/8	3/8	0	1	2	3	4
A255	ACROSS BACK	-3/8	3/8	0	1	2	3	4
A260H	CHEST 1" BLW AH RLXD-1/2 MEAS	-1/2	1/2	0 +1	2	4	6	8
A272HPS	WAIST PLCMT FM HPS	0	0	0	1/2	7/8	1 1/8	1 3/8
A270H	WAIST RLXD-TOPS-1/2 MEAS	-1/2	1/2	0	2	4	6	8
A290H	SWEEP RLXD@EDGE HEM-1/2 MEAS	-1/2	1/2	0 +1	2	4	6	8
A330	ARMHOLE DROP-FROM HPS	-1/4	1/4	0	1/4	1/2	3/4	1
A340H	UA/MUSCLE 1" BLW AH-1/2 MEAS	-1/4	1/4	0 +1/4	5/8	1 1/8	1 5/8	2 1/4
A352H-1B	SLV OPENING RLXD-1/2 MEAS S/SLV	-3/8	3/8	0	5/8	1 1/8	1 5/8	2 1/8
A360-1B	SLV LEN FROM CB NK-S/SLV	-3/8	3/8	0	5/8	1 3/8	2 1/8	2 7/8
A352H-4W	SLV OPENING RLXD-1/2 MEAS. L/SLV	-1/4	1/4	0 +1/4	1/4	1/2	3/4	1
A360-4W	SLV LEN FROM CB NK-L/SLV	-1/2	1/2	0 +1/4	3/4	1 1/2	2 1/4	3

*Measurements given in **RED** are adjustments needed from size XXL(20) to convert to a size 1X(18W).

A331 AH Straight fm Shoulder Pt

-1/4

Women's Plus WOVEN TOPS XXL to 1X CONVERSIONS

PLUS WOVEN TOPS (Sonoma & C&B) Average Spec differences XXL vs 1X

M1	KOS-WPL0018-1511					FORM2		
Table	LADIES PLUS Reference 20 on REG POM pg & apply adjustment below for 1X spec							
POM Code	POM Description	TOL (-)	TOL (+)	18W	22W	26W	30W	34W
A001-LAP14-34	LADIES PLUS ALPHA 0X(14W)1X(16W-18W)2X(20W-22W)3X(24W-26W)4X(28W-30W)5X(32W-34W)			1X XXL 20	2X	3X	4X	5X
A300	LEN HPS TO HEM > 26" (REG LGTH=28" OR CRTOCH)	-1/2	1/2	0 +3/4	1	2	3	4
A300	LEN HPS TO HEM <=26" (CROP LGTH)	-1/2	1/2	0	1	2	3	4
A100	NK WIDTH@SEAM/EDGE	-1/4	1/4	0 +1/4	1/4	1/2	3/4	1
A110	FRT NK DROP@SEAM/EDGE	-1/8	1/8	0	1/8	1/4	3/8	1/2
A120	BK NK DROP@SEAM/EDGE	-1/8	1/8	0	1/8	1/8	1/4	3/8
A250	ACROSS SHOULDER	-3/8	3/8	0 +1/4	1	2	3	4
A253	XFRT/BK PLCMT #" FM HPS	0	0	0	1/8	1/4	3/8	1/2
A254	ACROSS FRONT	-3/8	3/8	0 +1/4	1	2	3	4
A255	ACROSS BACK	-3/8	3/8	0 +1/4	1	2	3	4
A260H	CHEST 1" BLW AH RLXD-1/2 MEAS	-1/2	1/2	0 +3/4	2	4	6	8
A272HPS	WAIST PLCMT FM HPS	0	0	0 -1/2	1/2	7/8	1 1/8	1 3/8
A270H	WAIST RLXD-TOPS-1/2 MEAS	-1/2	1/2	0 +3/4	2	4	6	8
A290H	SWEEP RLXD@EDGE HEM-1/2 MEAS	-1/2	1/2	0 +3/4	2	4	6	8
A330	ARMHOLE DROP-FROM HPS	-1/4	1/4	0 +1/4	1/4	1/2	3/4	1
A340H	UA/MUSCLE 1" BLW AH-1/2 MEAS	-1/4	1/4	0 +1/4	5/8	1 1/8	1 5/8	2 1/4
A352H-1B	SLV OPENING RLXD-1/2 MEAS S/SLV	-3/8	3/8	0 +1/4	5/8	1 1/8	1 5/8	2 1/8
A360-1B	SLV LEN FROM CB NK-S/SLV	-3/8	3/8	0 +1	5/8	1 3/8	2 1/8	2 7/8
A352H-4W	SLV OPENING RLXD-1/2 MEAS. L/SLV	-1/4	1/4	0	1/4	1/2	3/4	1
A360-4W	SLV LEN FROM CB NK-L/SLV	-1/2	1/2	0 -1/2	3/4	1 1/2	2 1/4	3

*Measurements given in **RED** are adjustments needed from size XXL(20) to convert to a size 1X(18W).

Women's Plus DRESSES XXL to 1X CONVERSIONS

PLUS DRESSES (Sonoma & C&B) Average Spec differences XXL vs 1X

M1	KOS-WPL0018-1511					FORM2		
Table	LADIES PLUS Reference 20 on REG POM pg & apply adjustment below for 1X spec							
POM Code	POM Description	TOL (-)	TOL (+)	18W	22W	26W	30W	34W
A001-LAP14-34	LADIES PLUS ALPHA 0X(14W)1X(16W-18W)2X(20W-22W)3X(24W-26W)4X(28W-30W)5X(32W-34W)			1X XXL 20	2X	3X	4X	5X
A300	LEN HPS TO HEM > 26" (REG LGTH=28" OR CRTOCH)	-1/2	1/2	0 +1 (maxi) +1/2 (Knee Length)	1	2	3	4
A300	LEN HPS TO HEM <=26" (CROP LGTH)	-1/2	1/2	0	1	2	3	4
A100	NK WIDTH@SEAM/EDGE	-1/4	1/4	0 +1/4	1/4	1/2	3/4	1
A110	FRT NK DROP@SEAM/EDGE	-1/8	1/8	0	1/8	1/4	3/8	1/2
A120	BK NK DROP@SEAM/EDGE	-1/8	1/8	0	1/8	1/8	1/4	3/8
A250	ACROSS SHOULDER	-3/8	3/8	0 +1/4	1	2	3	4
A253	XFRT/BK PLCMT #" FM HPS	0	0	0	1/8	1/4	3/8	1/2
A254	ACROSS FRONT	-3/8	3/8	0 +1/4	1	2	3	4
A255	ACROSS BACK	-3/8	3/8	0 +1/4	1	2	3	4
A260H	CHEST 1" BLW AH RLXD-1/2 MEAS	-1/2	1/2	0 +3/4	2	4	6	8
A272HPS	WAIST PLCMT FM HPS	0	0	0 +3/4	1/2	7/8	1 1/8	1 3/8
A270H	WAIST RLXD-TOPS-1/2 MEAS	-1/2	1/2	0 +1	2	4	6	8
A290H	SWEEP RLXD@EDGE HEM-1/2 MEAS	-1/2	1/2	0 +1	2	4	6	8
A330	ARMHOLE DROP-FROM HPS	-1/4	1/4	0 +1/4	1/4	1/2	3/4	1
A340H	UA/MUSCLE 1" BLW AH-1/2 MEAS	-1/4	1/4	0 +1/4	5/8	1 1/8	1 5/8	2 1/4
A352H-1B	SLV OPENING RLXD-1/2 MEAS S/SLV	-3/8	3/8	0 +1/4	5/8	1 1/8	1 5/8	2 1/8
A360-1B	SLV LEN FROM CB NK-S/SLV	-3/8	3/8	0 +1	5/8	1 3/8	2 1/8	2 7/8
A352H-4W	SLV OPENING RLXD-1/2 MEAS. L/SLV	-1/4	1/4	0	1/4	1/2	3/4	1
A360-4W	SLV LEN FROM CB NK-L/SLV	-1/2	1/2	0 +1/2	3/4	1 1/2	2 1/4	3

*Measurements given in **RED** are adjustments needed from size XXL(20) to convert to a size 1X(18W).

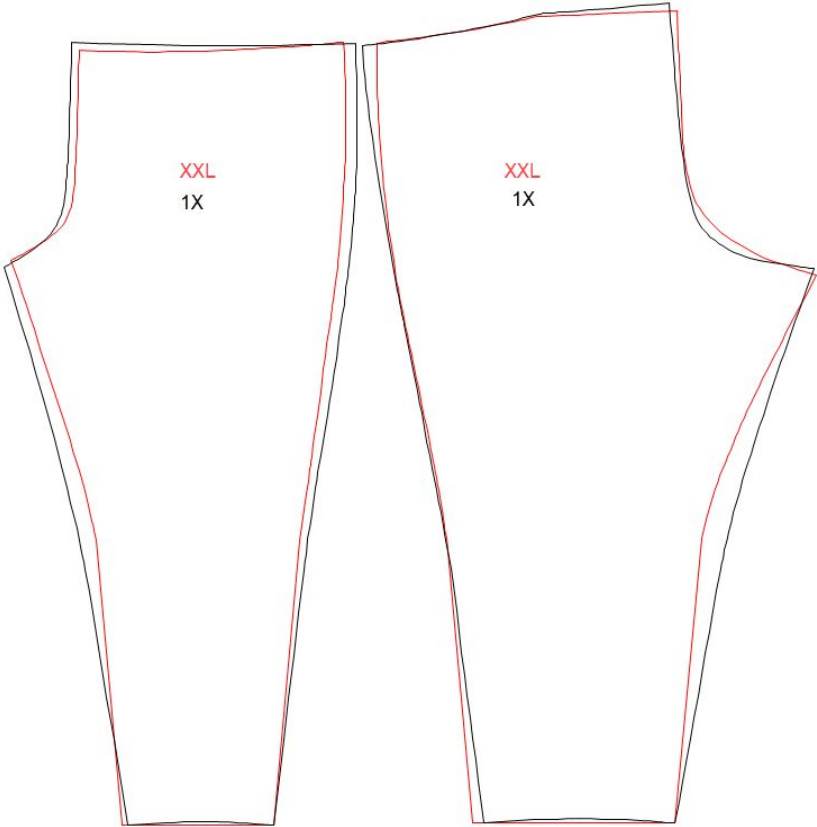
Women's Plus KNIT BOTTOMS XXL to 1X CONVERSIONS

PLUS ACTIVE BOTTOM Grade (Tek Gear Sz10)/ Average Spec Differences XXL vs 1X for Costing Guidance

Updated 12/1/20

Table	LADIES PLUS	Reference 20 on REG POM pg & apply adjustment below for 1X spec						
POM Code	POM Description	TOL (-)	TOL (+)	18W	22W	26W	30W	34W
A001-LAP14-34	LADIES PLUS ALPHA 0X(14W)1X(16W-18W)2X(20W-22W)3X(24W-26W)4X(28W-30W)5X(32W-34W)			1X XXL 20	2X	3X	4X	5X
A400H	WAIST@TOP EDGE-RLXD 1/2 MEAS	-1/2	1/2	0 +1/4	2	4	6	8
A401H	WAIST@TOP EDGE-EXTD-1/2 MEAS	0	1/2	0 +1/2	2	4	6	8
A412H	LOW HIP #" FM TOP EDGE-1/2 MEAS	-1/2	1/2	0 +3/4	2	4	6	8
A425H	THIGH@1" BLW CROTCH PT-1/2 MEAS	-1/4	1/4	0 +1/2	1 1/4	2 1/2	3 3/4	5
A430H	KNEE #" FM CROTCH POINT-1/2 MEAS	-1/4	1/4	0 +1/2	1/2	1	1 1/2	2
A438H-08P	LEG OPENING RLXD-FULL LENGTH 1/2 MEAS	-1/4	1/4	0 -1/2	3/8	3/4	1 1/8	1 5/8
A450	FRT RISE TO TOP EDGE	-1/4	1/4	0 +3/4	3/4	1 1/2	2 1/4	3
A460	BK RISE TO TOP EDGE	-1/4	1/4	0 +1 3/4	3/4	1 1/2	2 1/4	3
A500-3K-NG	INSEAM-KNEE-NG	-1/2	1/2	0 +1 1/2	0	0	0	0
A500-9P-NG	INSEAM-FULL LENGTH-NG	-1/2	1/2	0	0	0	0	0
A506	SKIRT LENGTH CB TOP EDGE	-1/2	1/2	0 +1 1/2	1/4	1/2	3/4	1
A000	COMPRESSION	STYLES have greater change from XXL to 20 See compression differences below.						
A400H	WAIST@TOP EDGE-RLXD 1/2 MEAS	-1/2	1/2	0 +1/2	2	4	6	8
A401H	WAIST@TOP EDGE-EXTD-1/2 MEAS	0	1/2	0	2	4	6	8
A412H	LOW HIP #" FM TOP EDGE-1/2 MEAS	-1/2	1/2	0 +1/2	2	4	6	8
A438H-08P	LEG OPENING RLXD-FULL LENGTH 1/2 MEAS	-1/4	1/4	0 +1/4	3/8	3/4	1 1/8	1 5/8
A425H	THIGH@1" BLW CROTCH PT-1/2 MEAS	-1/4	1/4	0	1 1/4	2 1/2	3 3/4	5
A430H	KNEE #" FM CROTCH POINT-1/2 MEAS	-1/4	1/4	0 -5/8	1/2	1	1 1/2	2
A450	FRT RISE TO TOP EDGE	-1/4	1/4	0 -1/2	3/4	1 1/2	2 1/4	3
A460	BK RISE TO TOP EDGE	-1/4	1/4	0 -1/4	3/4	1 1/2	2 1/4	3

*Measurements given in **RED** are adjustments needed from size XXL(20) to convert to a size 1X(18W).



PLUS SONOMA LEGGING BOTTOM Grade/ with XXL Spec differences for Costing Guidance

FORM1

KOS-WPL0018-1511

Table	LADIES PLUS Reference 20 on REG POM pg & apply adjustment below for 1X spec							
POM Code	POM Description	TOL (-)	TOL (+)	18W	22W	26W	30W	34W
A001-LAP14-34	LADIES PLUS ALPHA 0X(14W)1X(16W-18W)2X(20W-22W)3X(24W-26W)4X(28W-30W)5X(32W-34W)			1X XXL 20	2X	3X	4X	5X
A400H	WAIST@TOP EDGE-RLXD 1/2 MEAS	-1/2	1/2	0 -3/4	2	4	6	8
A401H	WAIST@TOP EDGE-EXTD-1/2 MEAS	0	1/2	0 -1/2	2	4	6	8
A412H	LOW HIP #" FM TOP EDGE-1/2 MEAS	-1/2	1/2	0 +3/4	2	4	6	8
A425H	THIGH@1" BLW CROTCH PT-1/2 MEAS	-1/4	1/4	0 0	1 1/4	2 1/2	3 3/4	5
A430H	KNEE #" FM CROTCH POINT-1/2 MEAS	-1/4	1/4	0 0	1/2	1	1 1/2	2
A438H-08P	LEG OPENING RLXD-FULL LENGTH 1/2 MEAS	-1/4	1/4	0 -1/2	3/8	3/4	1 1/8	1 5/8
A450	FRT RISE TO TOP EDGE	-1/4	1/4	0 +1	3/4	1 1/2	2 1/4	3
A460	BK RISE TO TOP EDGE	-1/4	1/4	0 +2	3/4	1 1/2	2 1/4	3
A500-3K-NG	INSEAM-KNEE-NG	-1/2	1/2	0 0	0	0	0	0
A500-9P-NG	INSEAM-FULL LENGTH-NG	-1/2	1/2	0 0	0	0	0	0

*Measurements given in RED are adjustments needed from size XXL(20) to convert to a size 1X(18W).

PLUS C&B/SONOMA KNIT BOTTOM Average Grade/ with XXL Spec differences for Costing Guidance

FORM1

KOS-WPL0018-1511

Table	LADIES PLUS Reference 20 on REG POM pg & apply adjustment below for 1X spec							
POM Code	POM Description	TOL (-)	TOL (+)	18W	22W	26W	30W	34W
A001-LAP14-34	LADIES PLUS ALPHA 0X(14W)1X(16W-18W)2X(20W-22W)3X(24W-26W)4X(28W-30W)5X(32W-34W)			1X XXL 20	2X	3X	4X	5X
A400H	WAIST@TOP EDGE-RLXD 1/2 MEAS	-1/2	1/2	0 0	2	4	6	8
A401H	WAIST@TOP EDGE-EXTD-1/2 MEAS	0	1/2	0 -1/2	2	4	6	8
A412H	LOW HIP #" FM TOP EDGE-1/2 MEAS	-1/2	1/2	0 +3/4	2	4	6	8
A425H	THIGH@1" BLW CROTCH PT-1/2 MEAS	-1/4	1/4	0 +1/2	1 1/4	2 1/2	3 3/4	5
A430H	KNEE #" FM CROTCH POINT-1/2 MEAS	-1/4	1/4	0 +1/2	1/2	1	1 1/2	2
A438H-08P	LEG OPENING RLXD-FULL LENGTH 1/2 MEAS	-1/4	1/4	0 -1/2	3/8	3/4	1 1/8	1 5/8
A450	FRT RISE TO TOP EDGE	-1/4	1/4	0 +1	3/4	1 1/2	2 1/4	3
A460	BK RISE TO TOP EDGE	-1/4	1/4	0 +2	3/4	1 1/2	2 1/4	3
A500-3K-NG	INSEAM-KNEE-NG	-1/2	1/2	0 0	0	0	0	0
A500-9P-NG	INSEAM-FULL LENGTH-NG	-1/2	1/2	0 0	0	0	0	0
A506	SKIRT LENGTH CB TOP EDGE	-1/2	1/2	0 +1	1/4	1/2	3/4	1

*Measurements given in **RED** are adjustments needed from size XXL(20) to convert to a size 1X(18W).



Women's Plus WOVEN BOTTOMS XXL to 1X CONVERSIONS

PLUS C&B/SONOMA WOVEN BOTTOM Average Grade/ with XXL Spec differences for Costing Guidance

FORM1

KOS-WPL0018-1511

Table	LADIES PLUS	Reference 20 on REG POM pg & apply adjustment below for 1X spec							
POM Code	POM Description	TOL (-)	TOL (+)	18W	22W	26W	30W	34W	
A001-LAP14-34	LADIES PLUS ALPHA 0X(14W)1X(16W-18W)2X(20W-22W)3X(24W-26W)4X(28W-30W)5X(32W-34W)								
A400H	WAIST@TOP EDGE-RLXD 1/2 MEAS	-1/2	1/2	0 +1/2	2	4	6	8	
A401H	WAIST@TOP EDGE-EXTD-1/2 MEAS	0	1/2	0	2	4	6	8	
A412H	LOW HIP #" FM TOP EDGE-1/2 MEAS	-1/2	1/2	0 +1	2	4	6	8	
A425H	THIGH@1" BLW CROTCH PT-1/2 MEAS	-1/4	1/4	0 +1/2	1 1/4	2 1/2	3 3/4	5	
A430H	KNEE #" FM CROTCH POINT-1/2 MEAS	-1/4	1/4	0 +1/2	1/2	1	1 1/2	2	
A438H-08P	LEG OPENING RLXD-FULL LENGTH 1/2 MEAS	-1/4	1/4	0 0	3/8	3/4	1 1/8	1 5/8	
A450	FRT RISE TO TOP EDGE	-1/4	1/4	0 +1	3/4	1 1/2	2 1/4	3	
A460	BK RISE TO TOP EDGE	-1/4	1/4	0 +2	3/4	1 1/2	2 1/4	3	
A500-3K-NG	INSEAM-KNEE-NG	-1/2	1/2	0 0	0	0	0	0	
A500-9P-NG	INSEAM-FULL LENGTH-NG	-1/2	1/2	0 0	0	0	0	0	
A506	SKIRT LENGTH CB TOP EDGE	-1/2	1/2	0 +1	1/4	1/2	3/4	1	

*Measurements given in **RED** are adjustments needed from size XXL(20) to convert to a size 1X(18W).

