

Basic Communication

*Global Technical Design
Apparel Resource Tools
Updated 06-1-2022*

KOHL'S

Table of Contents

- ❑ Communication Best Practices
- ❑ Sample Dispatch Communication & Shipping
- ❑ Email Communication Examples
- ❑ Fit Evaluation Communication Examples

COMMUNICATION BEST PRACTICES

Who to contact with questions?

- ❑ **Kohl's Technical Design:** Fit, measurement, construction, pattern, grading questions, & factory changes,
- ❑ **Kohl's Product Management:** Costing, Packaging, Labeling, Delivery, Factory Changes, Production issues.
- ❑ **Kohl's Design:** BOM (fabric, trim, colorway) updates & BOM submits, graphic, stripe, print questions and submits.
- ❑ **Kohl's Product Integrity:** Preferred Supplier questions, Audit questions, performance testing requirements and questions.

Methods of Communication

Best Practice: Use OnePLM as the one source for all style development history. Upload grading suggestions, construction option photos, images to the OnePLM Fit Evaluation instead of sending via email so the communication stays with the style and can easily be referenced in the future.

- ❑ Written comments along with detailed images on the OnePLM Fit Evaluation.
Advantage: keeps all style development history together in one place for future reference – important for grading questions where you are asking Kohls to review grading.
- ❑ Mock-ups or options for alternative suggestions can be included with Fit samples. These should also be referenced on the OnePLM Fit Evaluation.
- ❑ Use OnePLM Threaded messages to alert Kohl's TD to review the communication you added in the OnePLM Fit Evaluation.
- ❑ Emails should be used to notify Kohl's TD of information you need reviewed in OnePLM, send videos that may not upload, or ask questions about where to input information in OnePLM if unsure.
- ❑ Phone and video conferences can be used when timing is tight and to confirm understanding.

Communication Best Practices

- Email Subject Line: Include style #, Fit round, and Season.
- If you have images, grading questions, recommendations for pattern correction or construction options, [upload them into the OnePLM Fit evaluation](#) current sample round to maintain all style development history with the style in OnePLM.
- Explain questions or show concerns – include visuals
- Give an explanation of the cause of the issue
- Provide reason for requested change if applicable
- Give recommendations for solutions
- When discussing pattern corrections, include a pattern overlay of before & after pattern correction, or Kohl's suggestion vs Vendor suggestion if applicable.
- Acknowledge and answer all questions from Kohl's

SAMPLE DISPATCH COMMUNICATION

Why it's Important: Kohl's TD must confirm live fit models 1 day in advance and must decide whether to book or cancel live model based on amount of samples they have to fit. If we know a fit sample will be arriving in time for fitting, we can plan fit time accordingly.

COMMUNICATION OPTIONS:

Option 1: Send Email

1. To: Kohls TD
2. Subject: Style #, fit round, has been shipped
3. Email: Include Carrier and airway bill # in the email.

Subject: RE: WT13A177P / 1st fit has been shipped

Hi Ashley,

1st fit of FA21-WT13A177P is sent to you today (1/08) via DHL#2019 721 911 and I have uploaded comments/measurements/photo image and CPA page into one PLM, please kindly advise your comments upon receipt. Thank you and have a great weekend!

Best Regards,
Eilly

Sample Dispatch Communication

Option 2: Send [OnePLM Threaded Message](#) (this allows all style information to be in OnePLM for historical reference).

- a. Select Kohls TD as recipient
- b. Subject: Style #, fit round, has been shipped
- c. Comment: Include Carrier and airway bill # in the email.

Example of Threaded Message from OnePLM

tradeengines@kohls.com Sun, Jan 3, 9:40 PM 
to Jerilyn.Booth ▾






Following comment has been posted by MICKIE for Style ID: WT12A001.

Category: FIT EVAL
Subject: WT12A001RS-XXL-F1 has been shipped

Hi Jerilyn,
WT12A001RS-XXL-F1 has been shipped via FedEx#8148-2965-9030. Thanks! Mickie

Sample Dispatch Shipping

Who receives what?

KOHL'S DEVELOPMENT SAMPLES/SAMPLE TAG COLOR KEY				
		SAMPLE/SUBMIT TYPE – COLOR OF SQUARE = SAMPLE TAG COLOR		
OWNERSHIP	SEND SAMPLE TO:	PRE-DEVELOPMENT STAGE (CONCEPT ASSORTMENT)	COSTING STAGE (PLANNED ASSORTMENT)	DEVELOPMENT STAGE (ADOPTED ASSORTMENT)
KOHL'S DESIGN	Kohl's Design Contact	Kohls' Design initiated R&D Samples, Vendor Initiated Design Samples		SUBMITS/Bulk fabric/trim approval forms
KOHL'S PRODUCT MANAGEMENT	Kohl's Product Management Contact		COUNTER SAMPLE  Add Green dot to tag if sample measures accurate for fitting and attached POM pg with measurements.	AD SAMPLES
			COLOR RUN SAMPLES  Measure 1 of physical color run samples requested and add green dot to tag	
KOHL'S TECHNICAL DESIGN	Kohl's Technical Design Contact	BLOCK FIT SAMPLES Requested for pattern block development		FIT SAMPLE  Must enter information in OnePLM before sending sample.
				PRE-PRODUCTION (PP) SAMPLE  Must enter information in OnePLM before sending sample.
				TOP OF PRODUCTION (TOP) SAMPLE  (only when requested) Do not need to enter in OnePLM before sending sample.

Sample Dispatch Shipping

Why it's Important: Hundreds of sample packages arrive at Kohls shipping department each day. Many samples get delivered to the incorrect person or lost if the outside of the package is not properly addressed to the correct person. This causes delays in you receiving fit comments from Kohls TD.

Best Practice: Mail Fit samples individually and directly to the Kohl's TD to assure the fastest processing time. This is critical if sample approval is urgent.

Milwaukee Option – if not economical to ship individual packages from your location:

When sending multiple samples for different Kohls recipients to save on shipping costs:

1. Before packing samples in shipping box:
 - a. Individually bag each sample in clear polybag with paper inside bag showing Kohl's Recipient Name, Department, & Sample type.
2. Address outside of Shipping Box to:

Kohl's Corporate Office

Attn: **KOHL'S MULTIPLE RECIPIENTS**

N56W17000 Ridgewood Dr., **NORTH OR SOUTH DOCK**

Menomonee Falls, WI 53051 USA

NORTH DOCK (Building 1): Men's, Children's

SOUTH DOCK (Building 2 & 3): Women's, Young Women's, Active

Example of inner packaged fit samples shipped from vendor in a box addressed to KOHL'S MULTIPLE RECIPIENTS



Sample Dispatch Shipping

NY Design Office Option – if not economical to ship individual packages from your location:

Only combine fit samples for Multiple TDs in same shipping box - no other departments should be included in the same package.

1. Before packing samples in shipping box:
 - a. Individually bag each sample with label on the bag showing Kohl's Recipient Name, Department, & Sample type.
2. Address outside of Shipping Box to:

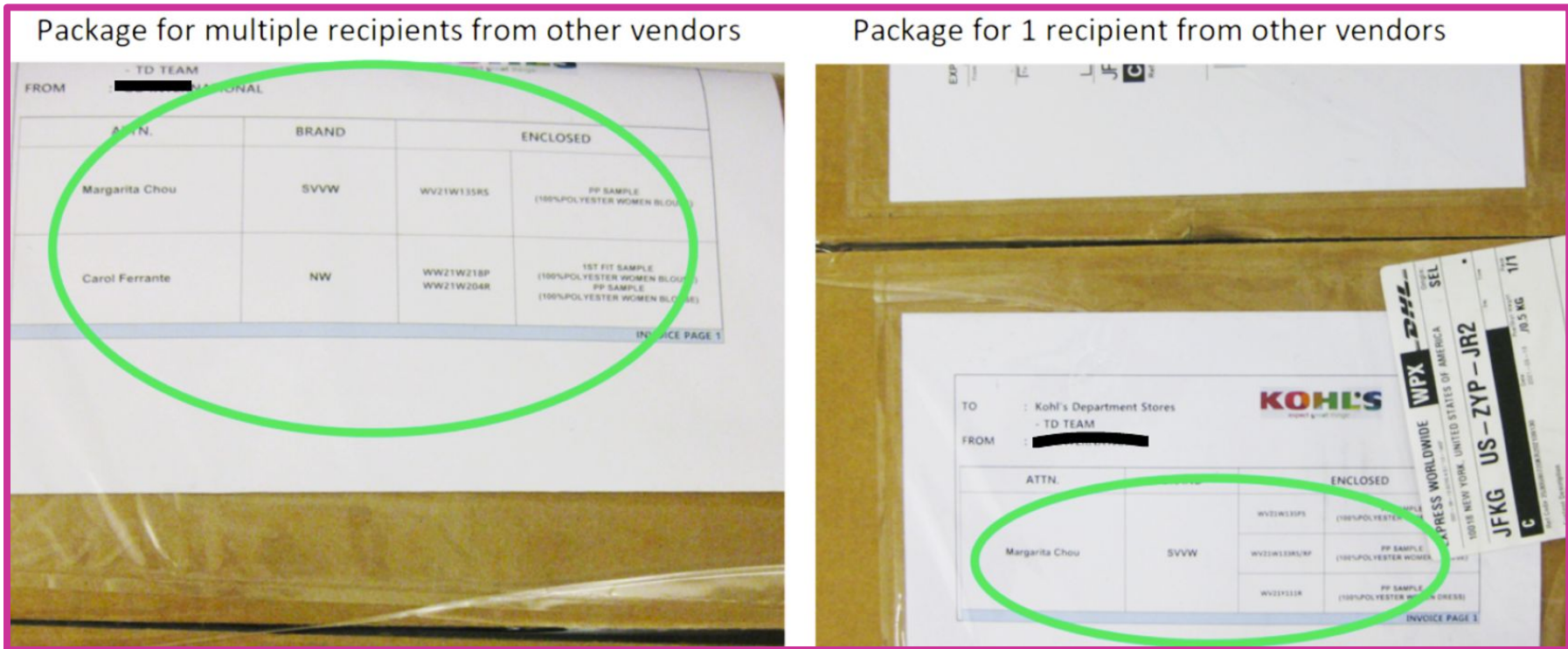
Kohl's Corporate Office

Attn: **KOHL'S TD**

1400 Broadway, 19th Floor

New York, NY 10018 USA

Example of inner packaged fit samples shipped from vendor in a box addressed to KOHL'S MULTIPLE TDs



EMAIL COMMUNICATION EXAMPLES

Email Communication Examples

- ❑ Header – State the Style #
- ❑ Body of the Email- Clear and concise question or request
- ❑ Signature – Make sure all contact information is in your signature

SP21- WT01A110PP share TP with N

Hi Ashley,

SP21- WT01A110P also have print version using NKS-17021722 100% poly 145g/m2

Same as WT94A105R, I reviewed a CTD sample to check print's fitting and it is quite similar with N, please see below photos.

Suggest adding P suffix into current POM page, please advise if acceptable or you would like to receive the garment to review.

Thanks!!



Email Signature was cropped out for privacy

Email Communication Examples

Hi _____,

FACTORY A advised the max width will be around 28-30" in 7GG 2x2 Rib. Awaiting for update from FACTORY B.

Can you advise what's the yarn size of cotton acrylic mentioned in your email? If 2/16's, 2/18's or 2/20 seems workable for 7GG but not 1/4Nm which the yarn is a bit thick.

- CTD / Vendor proactively addressing a potential production limitation early in the development stage to avoid a production delay later on. **GOOD!**

Hi _____,

We are running this style production from Spr'20 with 42320/2019 (modern white) and in Spr'21 (Feb & March INDC) the fabric code has changed to 45040/2019 (modern white) also we had PP Ref sample with new fabric code & proceed in production accordingly.

So we have PP approval in both fabrication. Meantime mill has raised that, they have liability fabric on old fabric code # 42320/2019 & Kohl's also agreed to use up this liability fabric in same Spr'21 (Apr INDC) and released BP for 5500pcs.

Our concern is that, in same season in same styling same color of fabric, but two different fabric article, it will be difficult to maintain in production floor. Factory has requested to allow to proceed with Spr'20 approved PP sample for this additional Spr'21 5500pcs, So pls help us to allow.

- CTD proactively advising of fabric change and making a recommendation. **GOOD! HOWEVER.....**
- The action requested by the CTD is difficult to follow. What could make it more clear?**
 - In order to avoid confusion on fabrication change, CTD requests that SP20 Modern White PP sample made in 42320/3019 fabric be used for the SP21 order of 5500 pcs for the liability yardage of the old fabric.
 - SP21 Modern White PP sample will only be made in 4520/2019 fabric as that is the new fabric replacing the old fabric going forward for future seasons. Please confirm you agree with this recommendation?

Email Communication Examples

Hi _____,

Regarding XXXX123 style, we received order confirmation for Missy & Petite (FYI, Plus size is not ordered yet). The season has shifted from FA'20 to SP'21 and factory is changed from factory A to factory B for the same shipment.

So we would like to create a new fit eval page to make PPS for factory B.
Please review and advise us if it is ok.

- CTD is informing KTD of extended sizes that have been added in the order, a season shift, and a factory shift and confirming if they are correct in taking the next action step. **GOOD! HOWEVER.....**
- What is missing from their request?**
 - Confirm the season and the sizes they plan to create the new Fit Evaluation for the Factory B PP sample Evaluations.

Hi _____,

Sorry to inform you that 1st fit sample will be delayed until 8/14.

XXXXK555R takes longer time than other styles because of washing and thread embroidery at chest. Also, the sample yardage is not ready.

So, we are planning to submit 1st fit on 8/14 and we will keep you updated on schedule.

This style is not order confirmed yet, so we will let you know detailed production schedule once available.

Thank you for your understanding.

- CTD proactively advising of a sample delay. **GOOD! HOWEVER.....**
- What additional steps could be taken in the meantime while waiting?**
 - CTD could send before/after pattern screenshot to confirm pattern corrections are accurate while waiting for sample yardage to arrive to ensure 1st Fit sample is executed accurately for fit corrections.
 - CTD/Vendor could offer to use 3D to review and confirm fit & aesthetic corrections while waiting for sample yardage

Poor Example

Please note we have received the order of above style since this is waffle fabric with wider bottom width and split neck, required additional tolerance for bulk production.

Please review with team and advice.

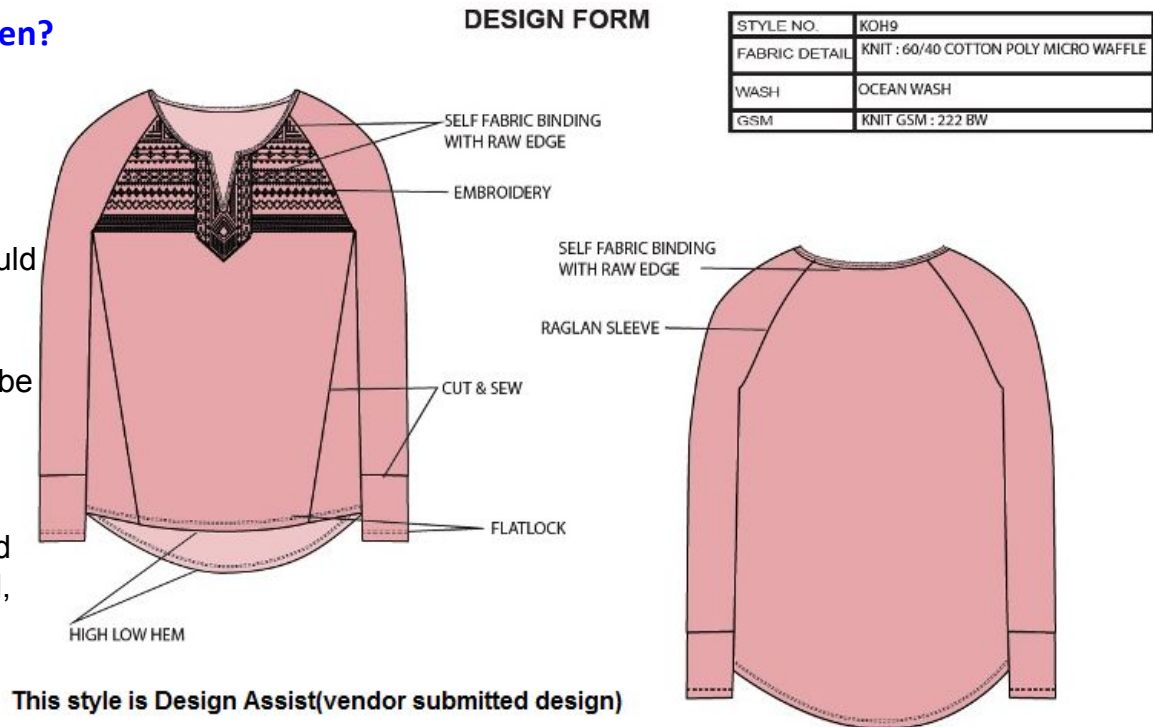
What additional step could have been taken?

- Concern – Fabric
- Reason for Concern - Not provided
- Recommendation – Not provided

This example was vendor design and this should be previewed for potential concerns before presenting the style to Kohls.

If there are known fabric issues, these should be addressed before costing was confirmed and order sent.

Kohl's Production tolerances are generous and align with industry. If tolerances are increased, sizes will overlap and we will have size inconsistency perceived by our customer.



FIT EVALUATION COMMUNICATION EXAMPLES

Fit Evaluation Communication Examples

- CTD used Kohls [Fit Comment Template](#) from K-Link and was thorough in filling in all information.

GOOD EXAMPLE

STYLE/FABRIC INFO

Fabric 1 (Body): 87/13 COTTON/RECYCLE COTTON 140G

Thread:

a. Needle Thread: TEX21 Poly core ([Samjin](#), Actual)

b. [Looper](#) Thread: TEX18 Textured Thread ([Samjin](#), Actual)

Elastic:

Clear [elastic\(#0608\)](#) @ Shoulder seam ([GSM](#), Actual)

Label Attachment:

a. [Main](#) Label- attached @ CB NK (46866006LC, Avery)

b. Size Label - attached @ under the Main Label (46866003LC, Avery)

c. Care Label will be attached 3 1/2 above from bottom edge

H/L: 7" satin hanger loop @ 1" from [Nk](#) seam, LAP style, ((Actual)

PATTERNS: uploaded in [fit eval](#)

GENERAL COMMENTS:

See comments and photos attached.

CONSTRUCTION COMMENTS

1. Followed DI.

2. 1/2 SELF NK BAND W/SNCS.

3. SLV/BTTM [HEM](#) :1/2 SELF TB W/1/8 DNCS.

4. H/L is 7 [length](#) 1 from NK seam. Pls. add POM for us.

FIT COMMENTS:

1. Used WL01K009 for block pattern and changed as updated specs.

2. HPS fold line is at dress form shoulder seam.

3. FRT AH curve is stretched appx 1/2, so it caused gapping on form.

[Will improve workmanship.](#)

Good detailed comments

POOR EXAMPLE

STYLE/FABRIC INFO

Fabric 1: WLP19-6/32 100% COTOTN SLUB JERSEY 180GSM (GOLDEN MORNING)

Fabric 2: no

Interlining: no

Thread: 100% POLYESTER CONTINUOUS FILAMENT TEXTURED ([Youm Kwang](#) Industry)

Elastic: no

Zipper: no

Button: no

Snap: no

Hanger Loop: DOUBLE FACE POLYESTER SATIN - 3/16" satin ribbon tape (GOLDEN CEDAR)

If there are no trims,
you can take this out

Label Attachment: OEKO-TEX LABEL: (AVERY DENNISON)

CARE CONTENT LABEL: (AVERY DENNISON)

MAIN LABEL/SIZE LABEL: Attached at CB Neck Seam (AVERY DENNISON)

Tracking Label: AVERY DENNISON (call out pp sample missing tracking label)

GPU Label Placement: no

PATTERNS:

.DXF e-pattern and nested attach on Fit Evaluation attachment Tab.

Pattern match to given measurements accordingly.

MEASUREMENTS:

Sample measurements are within tolerance, see details below @ Actual Meas-1.

GENERAL COMMENTS:

See comments and photos attached.

CONSTRUCTION COMMENTS:

1. Constructions follow to TP details.

2. We will pay attention to below points in production;

Neck line shape must be symmetrically left to right.

Must have proper tension to avoid puckering on all seam.

Need more detail
about construction

FIT COMMENTS:

1. Fit of this sample is ok see attached photo. Kindly give us your comments after review sample. Thank you!

*Need more details about balance

*Need to know what block pattern was used

Good Example

Detailed/Thorough Fit Comments: Page 1

- PP deadline update
- Fabric Concern – Showing awareness of problem and how vendor will address the issue.
- Factory Construction Recommendations
- Reason for Recommendation

Measurer 1 Fit Comments
<p>SAMPLE WASH INFO Non- wash: N Fabric Wash: N Garment wash: Y - Softer Washing [Washing machine 30min + tumble dryer machine 30min]</p> <p>STYLE/FABRIC INFO a. Fabric : 64% Cotton, 36% Lyocell, Twill, 4.7oz, 159.36gr/sqm (Supplier: SHENZHEN, J09393-1) b. Interlining: woven interlining #KVV-FLW (Chargeurs) c. Ring Metal Snap: 16L Ring Metal Snap (Dong shin) d. Thread 1: Poly spun TEX60 for needle (Sam Jin) e. Thread 2: Poly spun TEX40 for bobbin and looper (Sam Jin) f. Label: Main Label: 75238059NW (R-pac), Size Label: 75238003NW (R-pac), Care Label: 75238001NW (R-pac), UPC Label: KOH-CPSIA-UPC (R-pac)</p> <p>1. Updated PP deadline to 2020-10-19 according to T&A. 2. Updated factory to PT.SAMKYUNG. 3. Sorry to say, due to fabric bowing issue, WL side seam is skewing approx: 1 3/4~2 on form. I have called out this issue to Sales team and they are under checking with fabric mill. To confirm updated design first, we submitted fit sample in poor condition & off workmanship. Pls kindly understand. 9.24.20 CLF: NOTED.PLEASE ENSURE SKEWING IS CONTROLLED IN NEXT FIT SAMPLE AND IN PRODUCTION 4. To confirm washing, grinding effect at pocket flap, snap size /quality and thread quality, same sample has been sent to Design as well at the same day from sales team . Pls kindly note that. 9.24 CLF: NOTED.</p> <p>PATTERNS: F1-SP21-R-WW11W208-TWL-GG - 1st fit sample pattern(w/o shrinkage) uploaded to the Fit Eval Page attachment tab.</p> <p>GENERAL COMMENTS: See comments and photos attached.</p> <p>CONSTRUCTION COMMENTS: 1. Followed updated DI page comment & sketch. Pls review fit sample & below comment and advise comment. - DNTS at collar stand: Proceeded it 1/8 double needle stitching but as I checked with factory side, they prefers single needle edge stitch considering neck collar stand height 7/8 and each side seam allowance. Pls kindly review it with design team and advise comment. 9.24 CLF: DI HAS BEEN CORRECTED FOR SNTS ON COLLAR STAND. _</p>

Good Example – continued

Detailed/Thorough Fit Comments: Page 2

- ❑ Notifies KTD that strike offs, trimmings, have been submitted to Design for approval
- ❑ Construction recommendations
- ❑ Workmanship concerns called out by CTD
- ❑ How to ship product confirmation
- ❑ Confirms used reference pattern

2. Thread: Used coarse/heavy thread as previous counter sample. Our sales team have been submitted sample to design to confirm quality. Pls kindly note that.
9.24 CLF: NOTED.

3. Raveling thread at sweep hem: There are raveling thread at sweep hem after washing. The lengths are irregular. We would like to suggest cut to be 3/4~1L after washing for better appearance. Also, overall edge is came loose approx. 3/8~1/2L. Pls review it with design team and advise comment if it is acceptable. 9.24 CLF: AS PER 9.18 EMAIL FROM YUMI, DESIGN HAS APPROVED COVERSTITCH WITH NO UNRAVELING HEM, AS PER PHOTO.

4. There is grinding effect at bottom of pocket flap. By adding effect, it is caused loosen thread at flap. To avoid same issue in bulk production, would like to suggest raise top stitching approx. 1/4 instead of edge. Pls kindly review with design team and advise comments. 9.24 CLF: REMOVING EDGESTITCH AND KEEP 1/4" TOPSTITCH IS APPROVED BY DESIGN.

5. Reinforcement stitching

- There is slippage issue at sleeve cuff slit. Will add reinforcement stitching at next stage. 9.24 CLF: NOTED. THANK YOU
- According to minimum construction, will add reinforcement stitching at top corner of pocket. 9.24 CLF: NOTED. THANK YOU.

6. Workmanship: pls review below cmmt with photos.

- Placket edge is not flat. To improve this, we will attach snap after washing.
 - Slit at sleeve opening can be opened easily. Will improve it by increasing mitered tacking length at top of slit binding.
 - Each pocket placement is asymmetrical left to right. Will improve it on next stage.
 - Under pocket is visible when worn. Will adjust pocket & flap angle to be invisible from outside.
 - Snap is not placed at center of placket. Will improve it to be attached at center.
 - Apart at cuff stitching is uneven. Will improve it to be even.
- 9.24 CLF: NOTED. THANK YOU FOR CORRECTING THESE ISSUES.

7. Shipping: We submitted fit sample all snapped up. However, it would be better to follow DI sketch - open 1st snap at neck band. Pls kindly review with your team and advise comments. 9.24 CLF: PLEASE SHIP WITH 1ST SNAP AT NECK BAND OPEN.

8. Label placement

- Main label: Inserted NK band CB
- Size label: below at main label
- Care label: attached 3 1/2 WL side seam

FIT/ SPEC COMMENTS:

1. 1st fit sample is proceeded based on updated spec & Design without c/s stage to save timing. 1st fit sample is made based on reference pattern.
2. Forward shoulder seam is not align on form. It is more forwarded at neck line approx. 1/4. Will adjust it to be aligned on form. 9.24 CLF: NOTED WILL BE CORRECTED.
3. Neck & collar shape
 - > Comparing with DI sketch & inspiration images, adjusted collar shape & top edge length. Collar points looks shorter than sketch. Pls kindly review shape on model and advise comments. (FYR, current collar point spread is measured to approx.3 on form.)
 - > Neck band is exposed at CB neck. Will adjust collar shape to hug neck band and hide.

Good Example - Continued

Detailed/Thorough Fit Comments: Page 3

- CTD provides recommendations
- CTD provides shirring ratio
- CTD calls out uneven hem length concern.
- CTD provided grading recommendation

4. Across shoulder, front & back specs are slightly off than given spec. Will bring back to spec on next stage. 9.24 CLF: PLEASE REDUCE.

5. There is draglines under the bust area and it is hard to improve without bust dart. Pls review fit on model and advise comments. 9.24 CLF: NOTED.

(FYR, due to bowing issue, it is hard to see balance at back. But back body seems to hug hip and garment falling backwards. Pls kindly advise your thought, we will improve it on next stage.) 9.24 CLF: AGREE. BACK IS CUPPING BODY. AFTER CORRECTING BOWING PROBLEM, PLEASE ADJUST PATTERN TO CORRECT BACK DRAGLINES AND CUPPING AT HIPS.

6. Sleeve: Pls review below points on model and advise comments.

> There are shirring at sleeve cap with 8 7/8 L and ratio is 1:1.71. **In my opinion**, shirring amount looks heavy and it seems has excess fabric at back sleeve even balloon sleeve design. Pls kindly review it on form and advise your thought.

> **Shirring ratio at sleeve opening is 1:1.93** 9.24 CLF: PLEASE SEE KTD COMMENTS.

> Movement: Our in house model feels that it is comfortable.

7. There are 6 snaps at front placket followed DI page sketch. It would be okay at BP area on form but, could you pls kindly review placement on model and advise comments if it is acceptable? 9.28 CLF: AMOUNT OF SNAPS DOWN FRONT OPENING IS GOOD. PLACEMENT IS GOOD.

8. Front shirt tail height is measured to 2 1/2 and it looks gentle shape than inspiration image. If it is acceptable, pls kindly add POM for more accuracy. 9.24 CLF: SHIRT TAIL HEIGHT IS GOOD. POM ADDED AND UPDATED AS RECOMMENDED.

9. **CB length is approx. 1/4~3/8 longer than front.** Will adjust back length to be leveled with front body. 9.24 CLF: NOTED.

SPEC REVISION SUGGESTIONS:

1. POM A132) COLLAR LEN@TOP EDGE-OPEN: Pls review fit cmmt #3 and update spec 17 1/2 as fit sample if it is acceptable.

[09/18 POM grading suggestion: I've uploaded TP update request file under the Attachments tab. Pls kindly review and advise update if it is acceptable.

9.24 CLF: ACROSS BACK POM UPDATED TO A255 (WHICH HAS GRADING). COLLAR GRADING UPDATED AS RECOMMENDED. AFTER MUSCLE REDUCTION AND SLV/AH CORRECTIONS, PLEASE REVIEW AND UPDATE MUSCLE GRADING AS NEEDED.

Thanks in advance! :)

Good Example

Referencing Pattern Block

CTD confirmed pattern block they followed
In their fit comments.

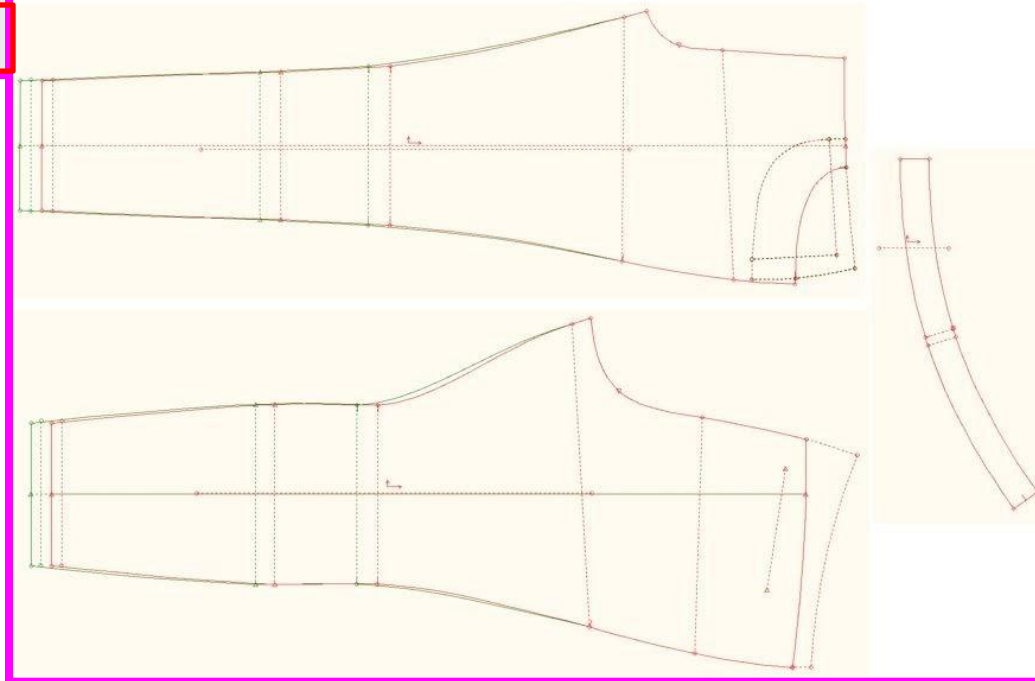
CTD uploaded a screenshot of block and fit sample
pattern overlapped.

PATTERNS: Please attach electronic pattern in One PLM as a .dxf or .dsn format. Fit sample patterns to be uploaded to the Fit Eval Page & Final Approved Fit or PP patterns to be uploaded to the Attachment Page. Pattern should include a 10" X10" square

WV93D100P FA19 block pattern followed and adjust as per measurement & current e-pattern F1-SP21-R-WV93D100P TWILIGHT-DNM-NHT.dxf

STYLE# WV93D100P (TWILIGHT)

RED COLOR= SP21 FIT SAMPLE ZERO PATTERN, GREEN COLOR= FA'19 PP SAMPLE ZERO PATTERN



Good Example

Construction

CTD noticed a quality issue on early in the development process and worked with Kohl's and factory technicians to align on a solution that can improve quality and ensure there is no delivery delay.

Issue Identified: Lycra Breakage at outseam

Proposed Solution: Change the outseam construction to open seams to prevent lycra breakage during wash process.



Good Example

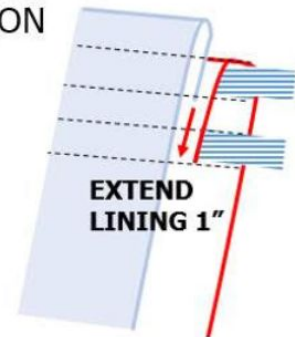
Construction

CTD showed original construction and mock up of suggested construction including both inside/outside views of construction in photo comparison for clear understanding.

Original Construction



CTD Suggestion



Good Example

Construction CTD provided two different construction options on one Fit sample.

NOTE:

1. Regarding back pocket, applied 2 options to show inside. Pls review with attached file and advise us if it needs pocket bag.

a) WR side applied taffeta pocketing so back pocket allowance would not be visible from outside compared to WR side,

b) WL side not applied taffeta pocketing as normal construction.



Good Example

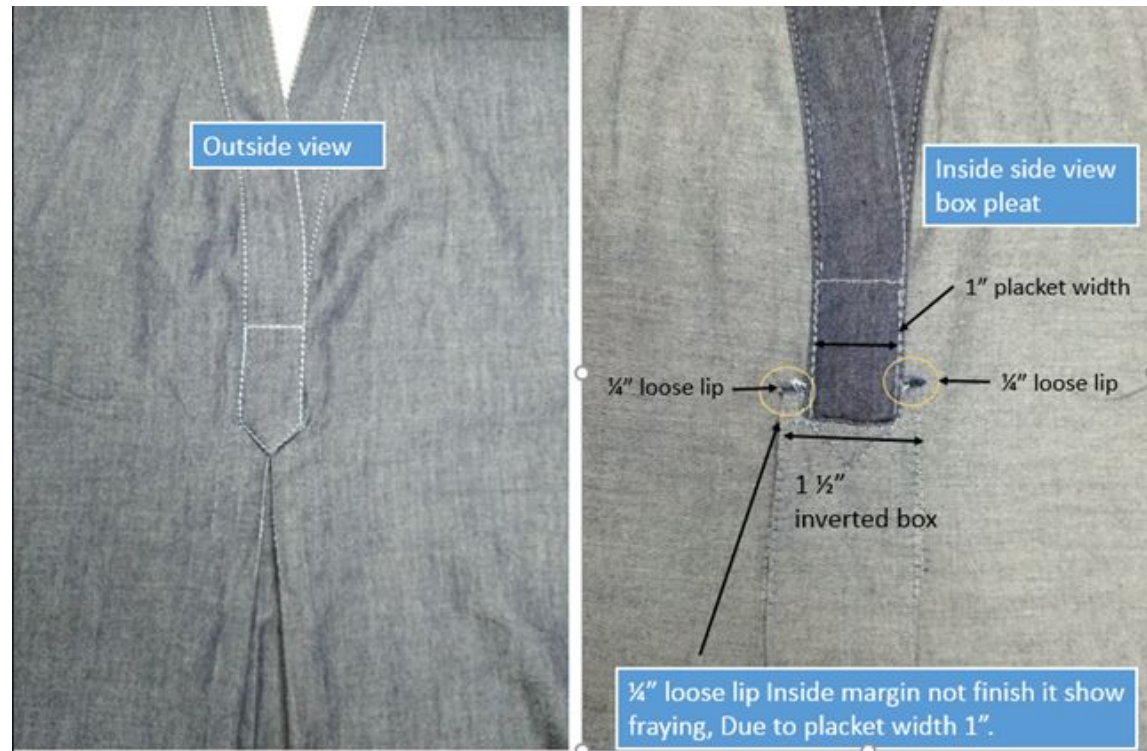
Construction

I would like clarify below mention point before proceeding 2nd fit sample.

1. For Inverted box pleat under front placket: As per received comments, You want to increase inverted box pleat 1 1/2" i/o 1". Have made one mock up 1 1/2" inverted box pleat with 1" front placket.
2. This is very difficult to finish inside box pleat margin is not finished its look like fray, See mock up image for your reference.
3. I would request to keep inverted box pleat 1" i/o 1 1/2" according to front placket. Please review and advise.

CTD included:

- Concern:** 1 1/2" pleat is deeper than Placket
- Recommendation:** Make pleat same as placket
- Reason:** So the edges are clean finish.



Good Example

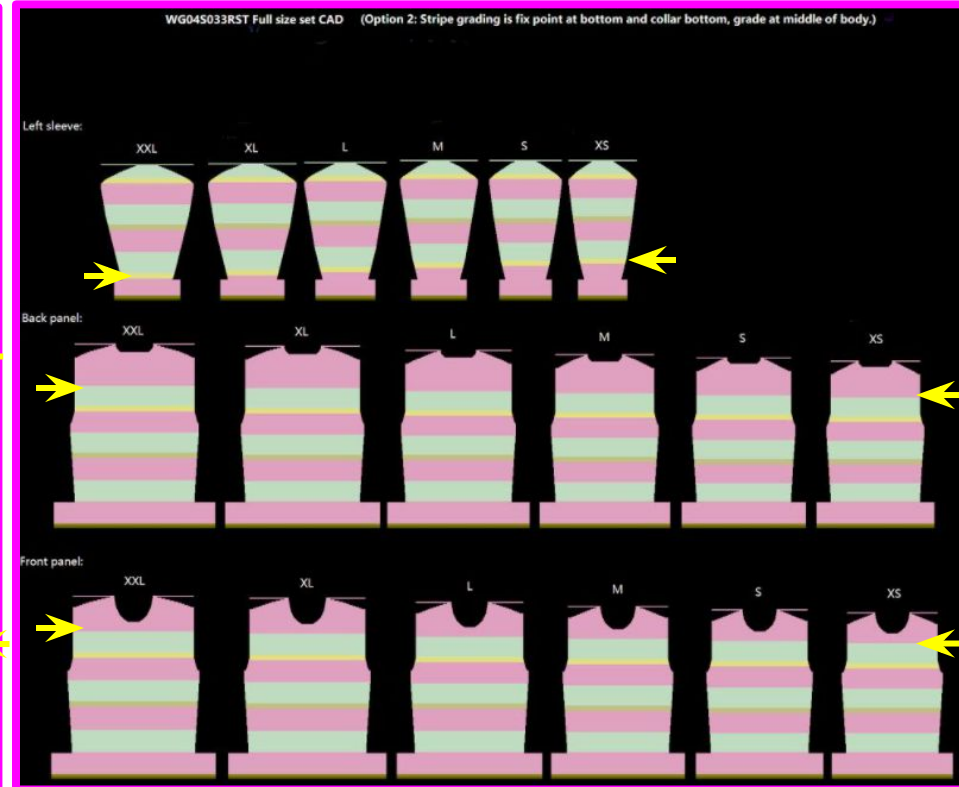
Stripe matching/grading

CTD provided two different options for stripe alignment on full size set of sweater

Option #1 Fix point at hem as per fit comments



Option #2 Fix point at hem and below bottom of neck grading at middle of body



Good Example

Multiple Fabrications

CTD found an internal live model that measures to Kohls fit size and can provide feedback for evaluation of fit and fabrication differences.

Hi Jerilyn,
WT12A001RS is Fit approved, and we have other suffixes- RS1/RP and RE1 of CTD samples to review.

Fabric elongation

	Horizontal	Vertical
Solid	90 %	100%
Print	120%	80%
EOE	90%	60%

Fit on Lily's comments

RS: Feel tight but not uncomfortable

RS1: Print back strap is comfortable than solid strap

RP: Most comfortable one

RE1: Need to pull down band seam to fit on under bust. Tighter at front panel.

Conclusion:

suggest RS1/RP share same TP with RS. They fits fine and have small quantity (about 500pc)

RE1 vertical elongation is less than solid a lot and can feel different from fit. Suggest increasing body length 1/2", and maybe lower AH drop 1/8" after body length increased, make a separate the POM page.

Please advise your thought. Thank you!!

- CTD proactively addressed the problem using resources available to them
- CTD evaluated fabric performance properties related to fit to guide in their analysis of how to solve the problem
- CTD provided recommendation



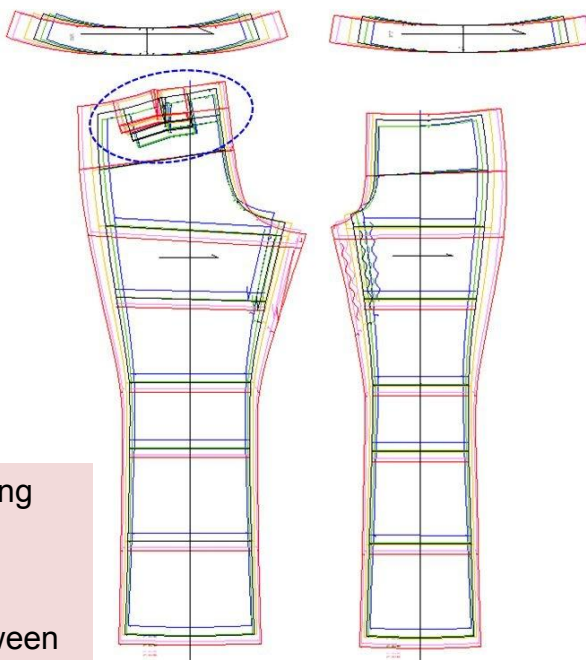
Good Example

Grading Change Recommendations

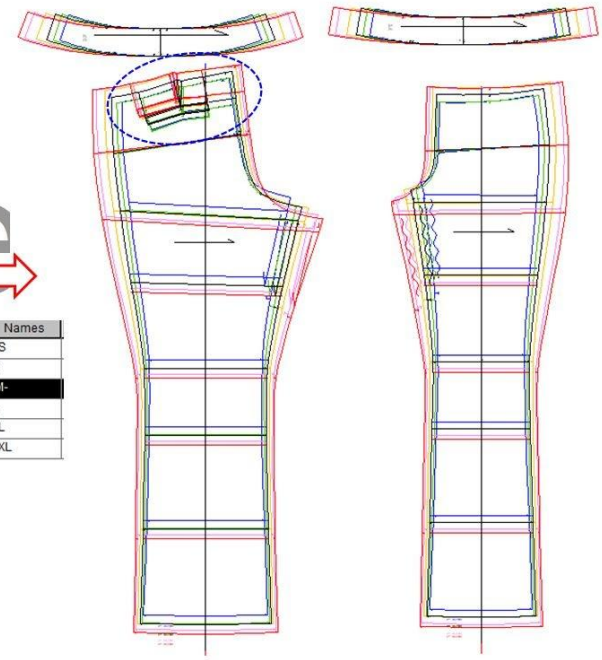
● POM		A613	BK PKT FROM CB										
	POM	Description	tol(-)	tol(+)	2	6	[10]	14	18	20	Remark		
					XS	S	[M]	L	XL	XXL			
Current updated TP	A613	BK PKT FROM CB	- 1/4	1/4	Grading	- 1/4	- 1/8	0	3/8	5/8	3/4	Issue	For SP'21, The sizes have updated according to recently updated grading rule. And it has been repeated style.
		Spec Meas	1 3/4	1 7/8	2	2 3/8	2 5/8	2 3/4					
LY	A613	*RV- BK PKT FROM CB	- 1/4	1/4	Grading	- 1/2	- 1/4	0	3/8	3/4	1	Pls advise	Regarding LY, because there was no spec for back pocket@CB, and it was graded according to dart placement to keep the same balance as core size. So would like to double check it if it is okay to maintain as LY or it should be followed as recently grading rule.Pl's review and advise us.
		Spec Meas	1 1/2	1 3/4	2	2 3/8	2 3/4	3					



➤ CURRENT GRADING



LY GRADING



Col	Names
1	XS
2	S
3	-M-
4	L
5	XL
6	XXL

- CTD gave reason for the grading change recommendation
- CTD included comparison of grading & spec difference between original and proposed grade.
- CTD included nested graded pattern difference for comparison

Fit Comment Communication – OK Example

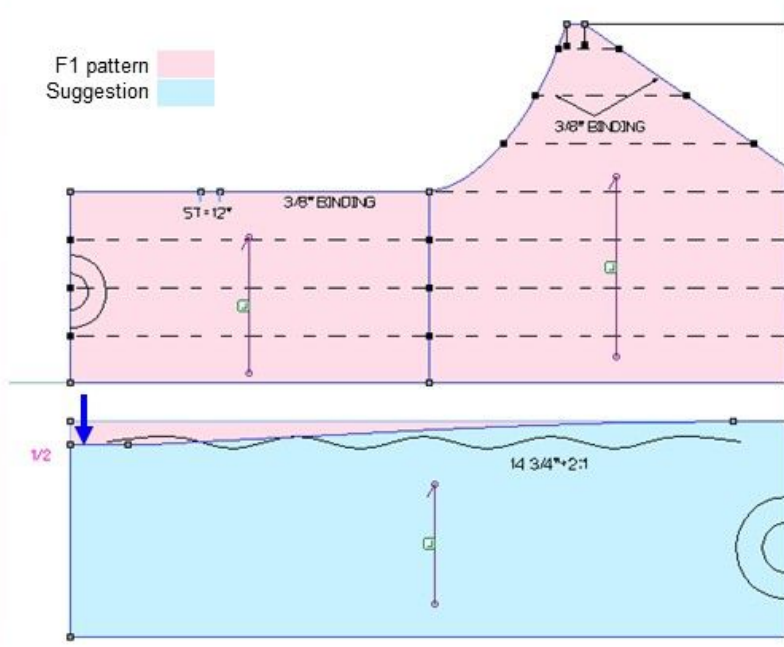
Pattern Correction

- ❑ CTD provided clear, concise explanation
- ❑ Gave simple visual
- ❑ Showed proposed pattern solution

What additional step could have been taken?

If CTD recognizes that the fit could be improved, they should make a second option or mock-up to show their proposal and speed up the approval process.

Due to smocking rows, waist seam is exactly straight in pattern and bottom ruffle pattern is also square shape as per usual ruffle pattern in other styles. We would like to suggest reshaping the ruffle pattern to have a slight curve at waist seam so that the hiking issue can be improved and A154A BK LENGTH TO HEM can meet the spec as well.

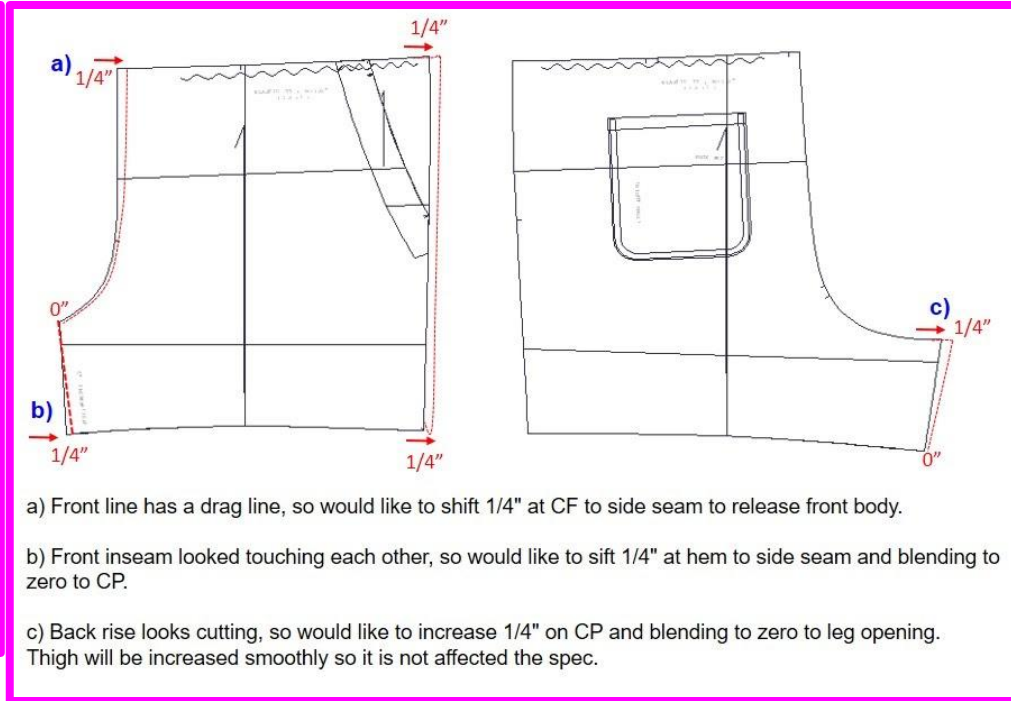


OK Example

Showing fit/pattern corrections

CTD reviewed sample on dress form prior to sending to KTD for fitting

CTD called out fit issues and suggested how to correct the pattern to solve the fit problem.



What additional step could have been taken?

If CTD recognizes that the fit could be improved, they should make a second option with their fit correction proposal to send with the Kohls fit/pattern for review in same sample round to save an additional sample round and speed up approval process.

OK Example

Please note that style # YR64W436 & YR64W427 POM shows grading for draw cord as below, after checking with supplier they are not able to achieve as per request in POM grading & tolerance.

Below comments rcvd from supplier on draw card length and tolerance level. Kindly review the same and need approval to proceed with bulk and PR sample. Thanks!

As per POM Grading & Tolerance

POM Code	POM Description	TOL (-)	TOL (+)	33-35	36-38	39-41	42-44	45-47	48-50	51-53	54-56
A140B	HOOD DRAWCORD LEN-FULL CIRC	- 1/4	1/4	41	41 1/2	42	42 1/2	43	43 1/2	44	44 1/2

*****quote*****

As the draw cord is a kind of stretchable material we can't able to maintain the accurate length in this,
Always draw cord will have the tolerance of +/- 2 inches,
So it could be helpful for us if you can give the break up like 41, 43, 46 inches only. Need approval to proceed.

*****unquote*****

- CTD proactively advising of drawcord production issue. **GOOD! HOWEVER.....**
- The action requested by the CTD is difficult to follow. What could make it more clear?**
 - CONCERN:** Maintaining accuracy of drawcord length.
 - REASON FOR CONCERN:** Grade is less than tolerance, drawcord sizes could potentially overlap in production
 - RECOMMENDATION:** 2" group grade sizes together based on tolerance.
 - REASON:** Easier to control production consistency
 - CTD RECOMMENDATION:** Because Drawcord supplier tolerance is +/-2", we would like to propose a 2" grade and group sizes together as proposed. Please advise if acceptable: 33-38 = 41", 39-47 = 43", 48-56 = 45"

Poor Example

KTD'S comments on Counter Sample – requested recommendation from CTD

CONSTRUCTION COMMENTS:

1. Frayed bottom opening has been removed. Please see attached photo for coverstitch finishing. DI has been updated
2. CF placket should have 7 buttons
3. Collar points are flipping up. Please ensure undercollar is smaller than top collar.
4. Please remove edgestitch on pkt flap. Keep 1/4" SNTS.

FIT COMMENTS:

1. Across shoulders/front/back are too wide. Specs updated.
2. Length is too short. Please follow spec.
3. Please reduce shirring ratio in slv cap. After reducing muscle (#4), please recommend shirring length and ratio in slv cap.
4. Please reduce muscle. Spec revised.
5. Sleeve inseam is pulling up. Please increase slv inseam /reduce slv cap height for slv to not pull up.
6. Please increase shirring ratio at slv cuff. Sleeve should have mushroom effect. 7. Please send photos to KTD of sleeve corrections #3 and #6 to review recommended revised shirring ratios.
8. Please increase collar point length. Spec revised.
9. Front nk drop is too high. Please follow spec.
10. Note: collar shape is generally good, however it is too close to the neckline of CF.
11. Back is cupping body and front is flaring away from body. Please correct balance for back hem to not cup body.
12. Back has draglines After reducing across shoulders, please review shoulder slope to help pick up back draglines.

CTD'S comments on fit sample – No response to KTD's comments

SAMPLE WASH INFO

Garment wash: ENZYME + PP SPRAY

STYLE/FABRIC INFO

Fabric 1 or Yarn (Sweaters): ACTUAL -100% COTTON (20*30/88*56)

Garment FABRIC Weight: 152 GSM

Thread: 100% SPUN POLYESTER TEX 27-COATS

Button ∩ DOUBLE RING SNAP 16L (MY. UNION)

Inter Lining ∩ KH5061 (PCC)

Label Attachment: FOR PLACEMENT APPROVAL

PATTERNS: Please attach electronic pattern in One PLM as a .dxf or .dsn format. Fit sample patterns to be uploaded to the Fit Eval Page & Final Approved Fit or PR patterns to be uploaded to the Attachment Page. Pattern should include a 10" X10" square.

Fit, construction and workmanship

- 1) All measurements are within tolerance.
- 2) Sample looks good on dress form.
- 3) All comments followed.
- 4) We have finished bottom hem with overlock. 10.11 CLF: DESIGN APPROVED.
- 5) We have applied interlining in single layer at collar, placket and cuff 10.11 CLF: QUALITY IS APPROVED..
- 6) Self fabric backing applied under pocket flat to avoid damage in washing. 10.11 CLF: THANK YOU FOR ADDING BACKING. FRAYED EDGES LOOK SLOPPY. CAN AN ALTERNATE FABRICATION BE USED THAT DOES NOT FRAY?



CTD should respond to KTD's previous sample comments in their sample comments as well as provide analysis and recommendations.