

KOHL'S

CONSISTENCY IN TECH DESIGN USING STANDARDS

Kohl's Technical Design - Apparel

October 2018

KOHL'S PURPOSE

To **inspire** and **empower** families
to lead **fulfilled** lives

KOHL'S GOAL

To be the most
engaging retailer
in America

KTD, CTD and Li&Fung OUR GOAL

Develop 5-Star Products for
our Private & Exclusive Brands
by delivering on Customer's
expectation for **VALUE,**
QUALITY, FIT CONSISTENCY
and **COMFORT**



WHO DRIVES CONSISTENCY IN PRODUCT GLOBALLY



Kohl's Tech Design



Certified Tech Designer



Li & Fung Tech Designer



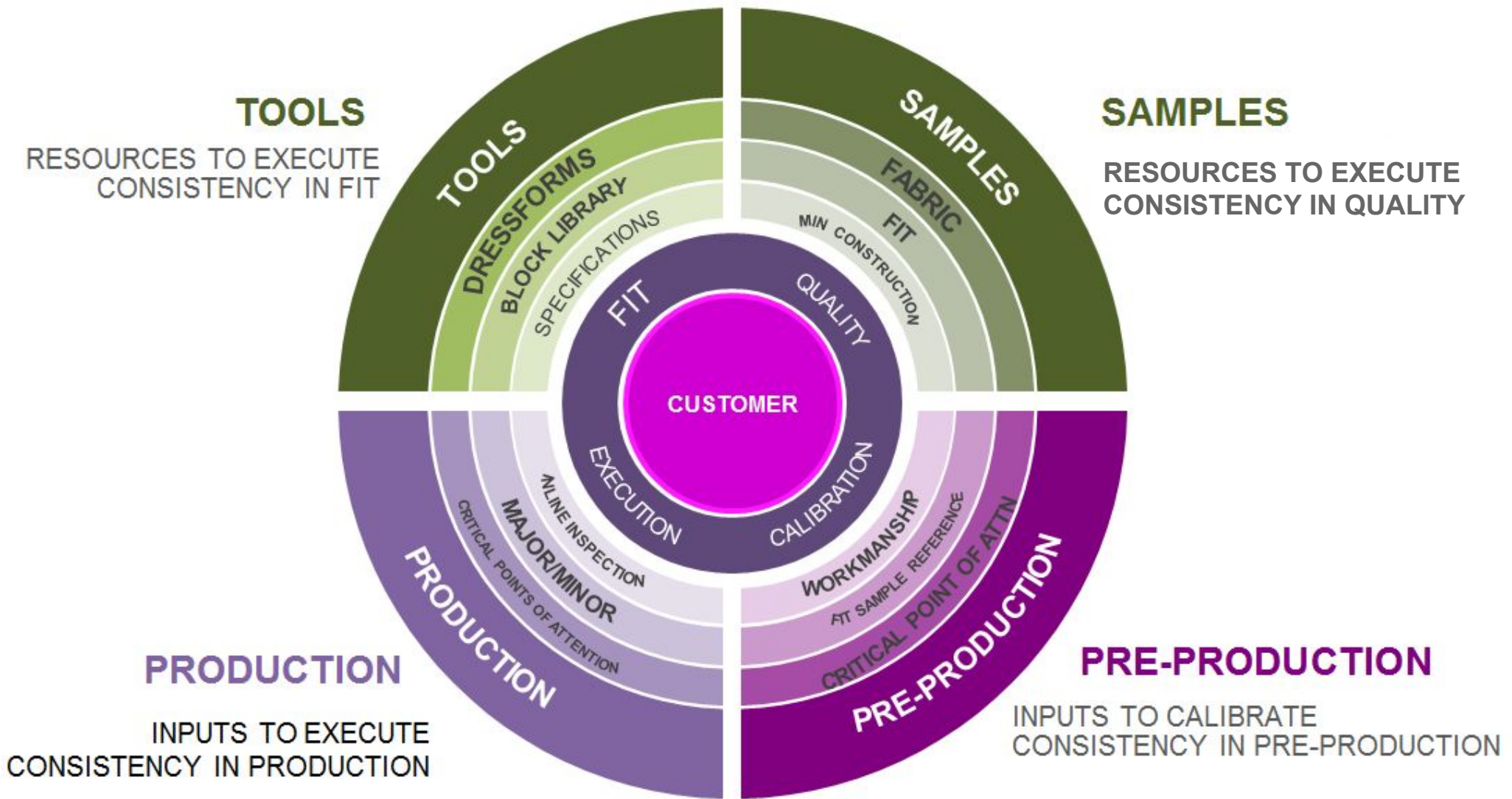
Factory Certified Tech Designer



Li & Fung Squad



FRAMEWORK FOR CONSISTENCY IN PRODUCT EXECUTION



WHAT DRIVES CONSISTENCY



DEVELOPMENT

- Fit Library
- Reference Pattern
- Kohl's Brands & Aesthetics
- Dressforms
- Fit Landmarks
- Product Engineering
- Fit Approval



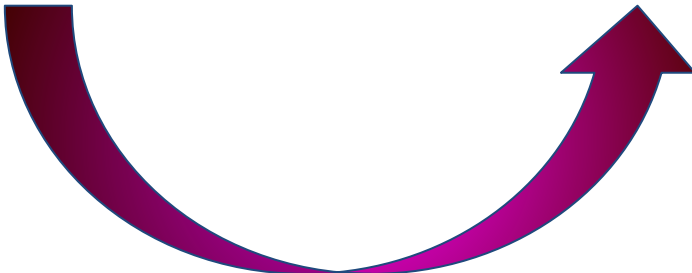
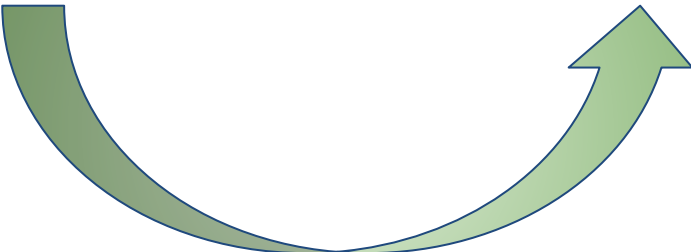
PRE PRODUCTION

- PR Approval
- Pattern Shrinkage Application
- Grading Application
- Pre-Production Meeting
- Critical Points of Attention
- Pilot Test Run



MANUFACTURING

- Production Pattern
- Fabric & Trims
- Cutting
- Sewing
- In-line Inspections
- Pressing
- Quality & Execution



WHO DRIVES CONSISTENCY



Kohl's Tech Design



Certified Tech Designer



Certified Tech Designer



Li & Fung Tech Designer



Li & Fung Tech Designer



Factory Certified Tech Design



Factory Certified Tech Design



Li & Fung Squad



Li & Fung Squad



Development



Pre-Production



Production

WHAT CHALLENGES CONSISTENCY

MULTIPLE
FABRICATIONS

UTILIZATION OF
TOOLS &
RESOURCES

SAMPLE
ROOM
VS
PRODUCTION

MULTIPLE
VENDORS

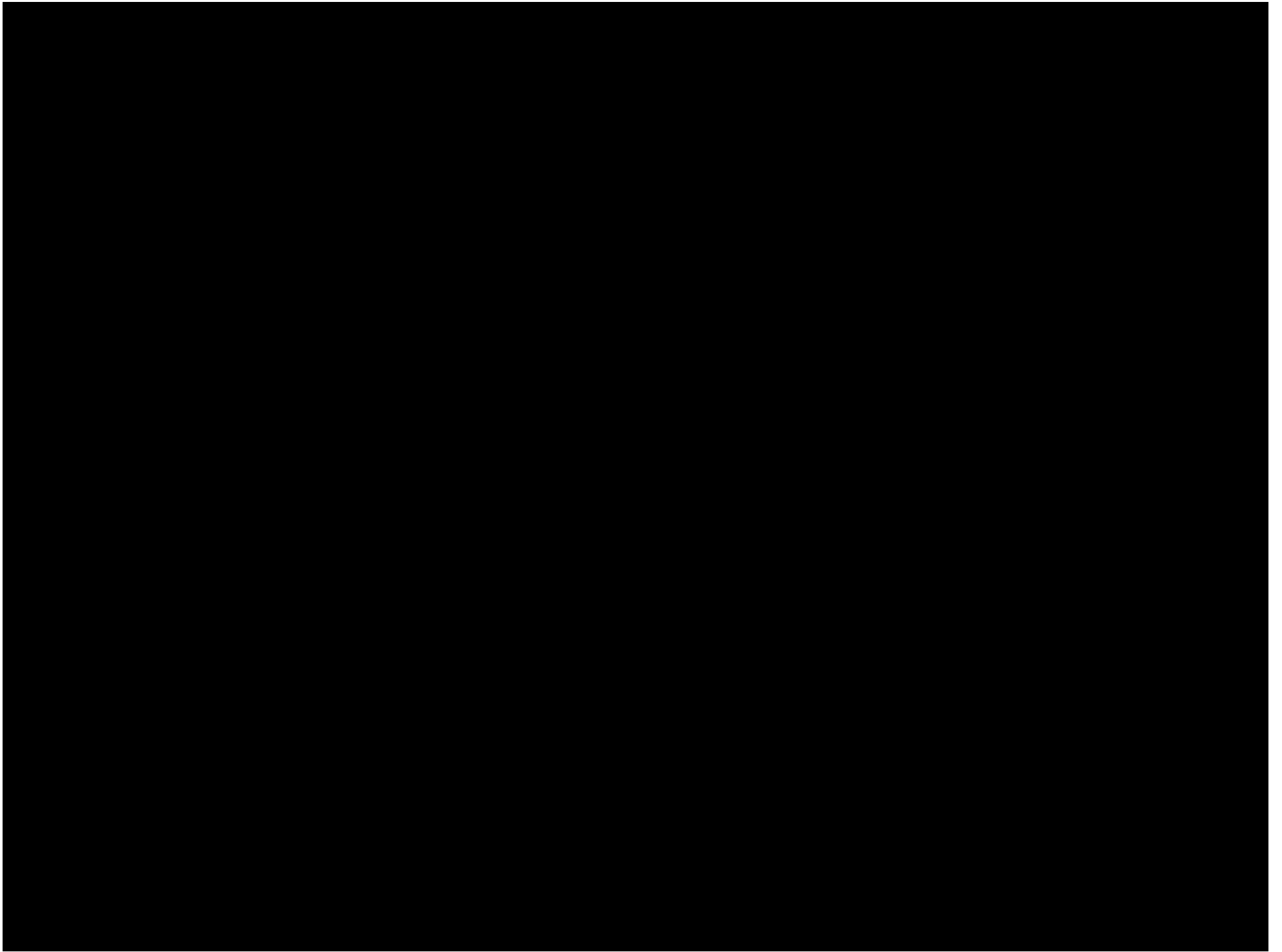
MULTIPLE
FACTORIES

Customer
★★★★★
Reviews

WHERE SHOULD WE FOCUS IN DEVELOPMENT?



**TOOLS AND SAMPLES SHOULD
DRIVE CONSISTENCY IN
SIZE AND QUALITY OF OUR PRODUCT**



FIT & SIZE CONSISTENCY

Goal:

- Determine appropriate **FIT** & maintain **SIZE** consistency through your brand.

Our Private & Exclusive Brands have a specific Core Fit Size with a matching Kohl's Dressforms that MUST BE USED as the **FIT & SIZE** standard for our brands.

Fit intent, styling, ease, silhouette and fabrications will cause variation. Use the Fit Keys when needed to review a common spec range for category, fabric, silhouette & Brand Aesthetic.



FIT CONSISTENCY-DRESSFORMS

- Dressforms: A Tool used by TD/CTD to establish fit & size consistency for a Brand.
- This tool provides a consistent platform for KTD's and CTD's to replicate a fit issue and help troubleshoot a solution.
- Unlike a fit model, a dressform does not gain weight or lose weight, and always has the same posture and height. These characteristics help a TD establish fit standards that can be easily duplicated at a vendor location.



FIT LIBRARY

Goal:

- Maintaining FIT consistency throughout brand is key attribute when reviewing and approving fit samples.

TOOLS:

- The OnePLM Fit Library contains Approved Fit Standards and Patterns by Brand.
- Fit Consistency is established EACH SEASON within Kohl's Technical Design, by category and classification
 - Always reference current technical package for measurement specs, even for carryovers.

FIT CLASSIFICATION DEFINITIONS

The primary function of a Technical Designer is to determine appropriate fit and to maintain consistency and accuracy throughout each brand.

The following critical information must be understood prior to fitting:

- Fit Classifications:
 - ★ Classic: Full – Roomier fit with the most ease over body
 - ★ Moderate: Easy- Comfortable fit with ease over body
 - ★ Contemporary: Slim – Closest fit to body with minimal ease over body

FIT CONSISTENCY- FABRICATIONS

When Different Fabrics = Different Specs

- Specs were increased from 1st fit to 2nd fit to allow the Circle Print Jersey sample to have the same ease over body as the Stripe Snit



CTD Role in Evaluating Fabric

- When a style has multiple fabrics, CTD should complete the following prior to sending samples to Kohl's:
 - Review both fabrications side by side on a form to confirm that the same fit aesthetic is being achieved in the specs provided
 - If the same fit aesthetic is not being achieved, CTD should evaluate fabric to determine what adjustments are needed and provide their suggestion to the KTD
 - KTD can then review suggestion and update TP accordingly to include the correct amount of POM/Fit Eval pages so that each fabrication can be documented in the system by the CTD
- If fabric properties are new or unfamiliar, KTD may reach out to CTD to leverage their expertise to determine if the same spec can be followed or if adjustments are needed to achieve a consistent fit.

Comparing Different Fabrications

- KTD is responsible for comparing two different fabrics to determine if drape, stretch and comfort will be consistent if they share the same spec.
- This fabric comparison can be done using a fabric swatch or a full garment. This should take place during the Style Development Handoff or at the Adopted Style Handoff.



FIT CONSISTENCY- FIT MODEL

Goal:

Determine appropriate comfort, feel while maintaining fit consistency.

Fit Model - Movement & Comfort

Live Models are used to provide valuable feedback about **comfort** and how the garment feels during wear and movement.

- Fit Model: Provide qualitative feedback about garment comfort, movement and functionality to Technical Design during fitting.
- Fit Models must be familiar with key programs for each area to be able to provide consistent feedback.
- Fit Model Comments: focus on how the garment feels during wear. Fit Models are asked to confirm movement using the guidelines in image...



Comfort was the top feature when shopping at Kohl's!

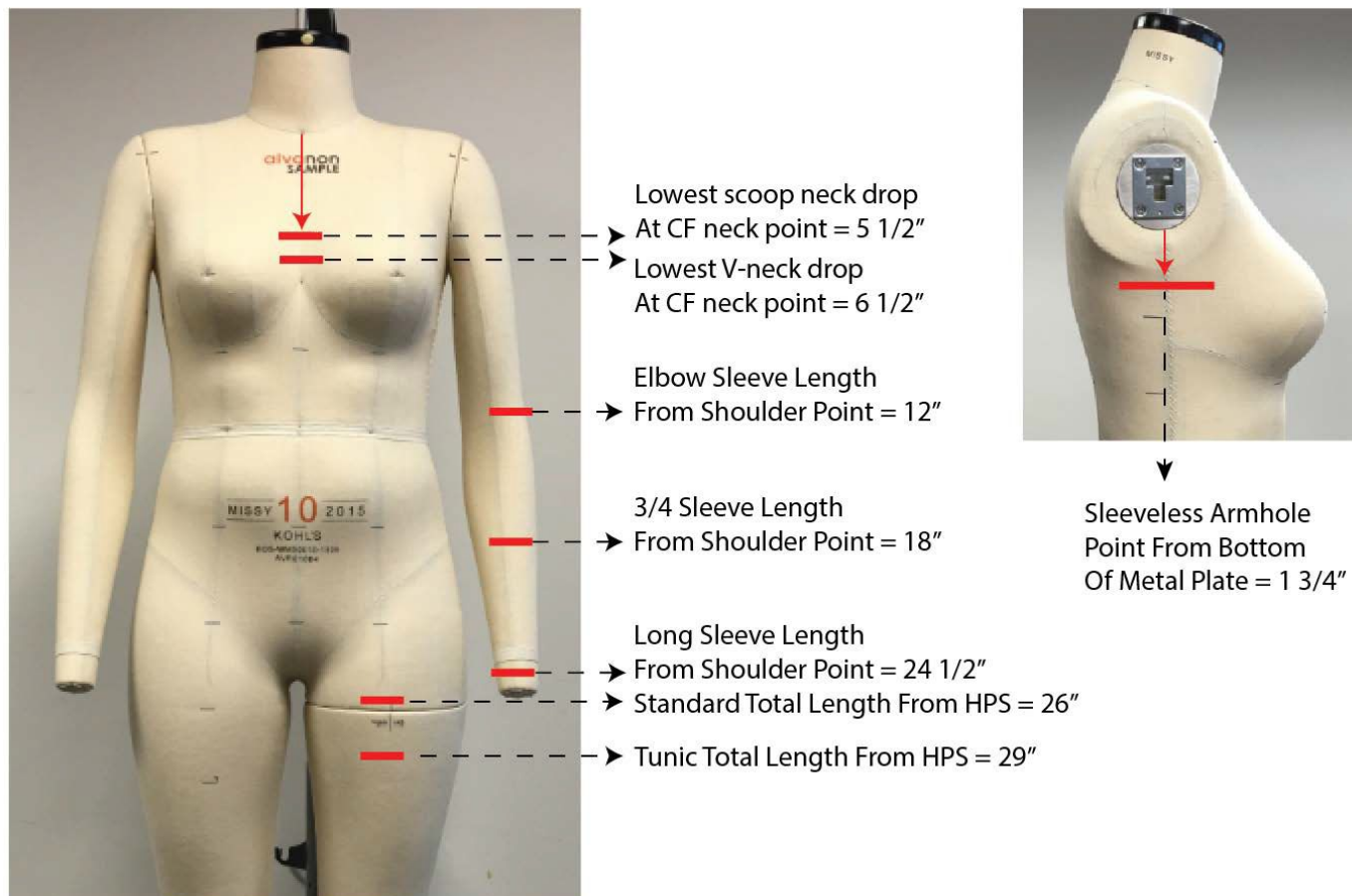


FIT CONSISTENCY-LANDMARKS

Each brand creates landmarks specific to each category to maintain fit consistency.

During fit sessions, landmarks can be used to drive consistency on lengths and critical points for silhouettes, fabrics and styles.

Available in Fit library.



FIT CONSISTENCY- FABRICATIONS

Landmarks

Due to different fabric elongations, Technical Design will update the technical package with adjusted specs to reflect the landmarks for each fabrication.



Spec - HPS 26"
On Body – 26.375"



Spec - HPS 26"
On Body 27.25"



Spec - HPS 26"
On Body – 27.75"

WHY

customer perception- same type style should fit and look the same, regardless of fabric content

FIT CONSISTENCY-LANDMARKS

When landmarks properly applied - Approval

Apr.9 Essential Tee

Landmark

Nobland

Lee&Co

Sae-A



- 1 style
- 3 fabrications
- 3 vendors for production

FIT CONSISTENCY- PATTERN

In order to maintain consistency and accuracy throughout a brand, it is critical to start each style with a proven body/known pattern.

- **Starting Pattern:**

- Block Pattern – a pattern that is a starting point to develop a new style.
- Repeat Pattern (Carry Over) – a PR pattern of a style that has already been produced that will repeat for another bulk production run to be identically executed.
- Reference Pattern – a previously approved style given as a starting point when developing a new style not currently loaded in the onePLM fit library

Patterns can be found in our onePLM Fit Libraries

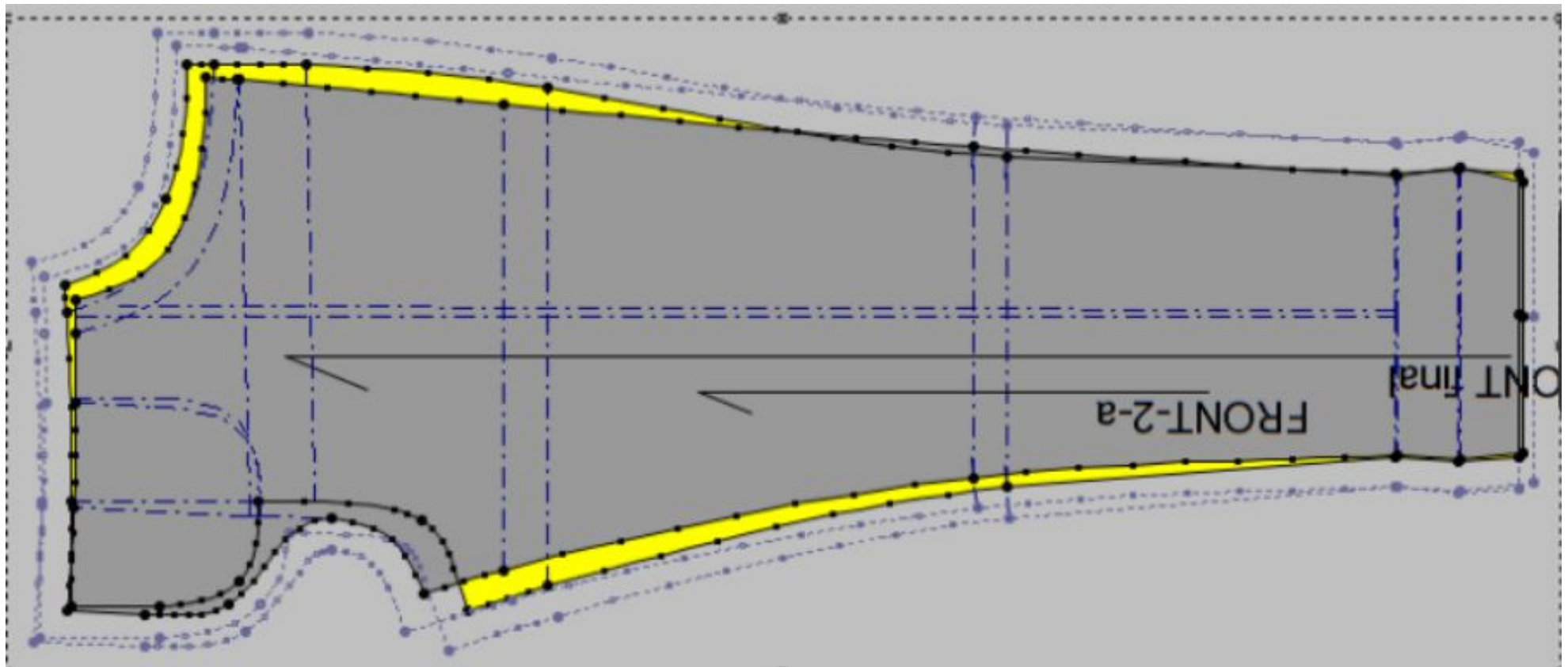
Tech Designers should advise on the onePLM overview page the pattern start point located on the “Attachments” tab.

FIT CONSISTENCY- PATTERN OVERLAY

Check against block or reference pattern

Place block pattern on top of fit sample pattern in Optitex.

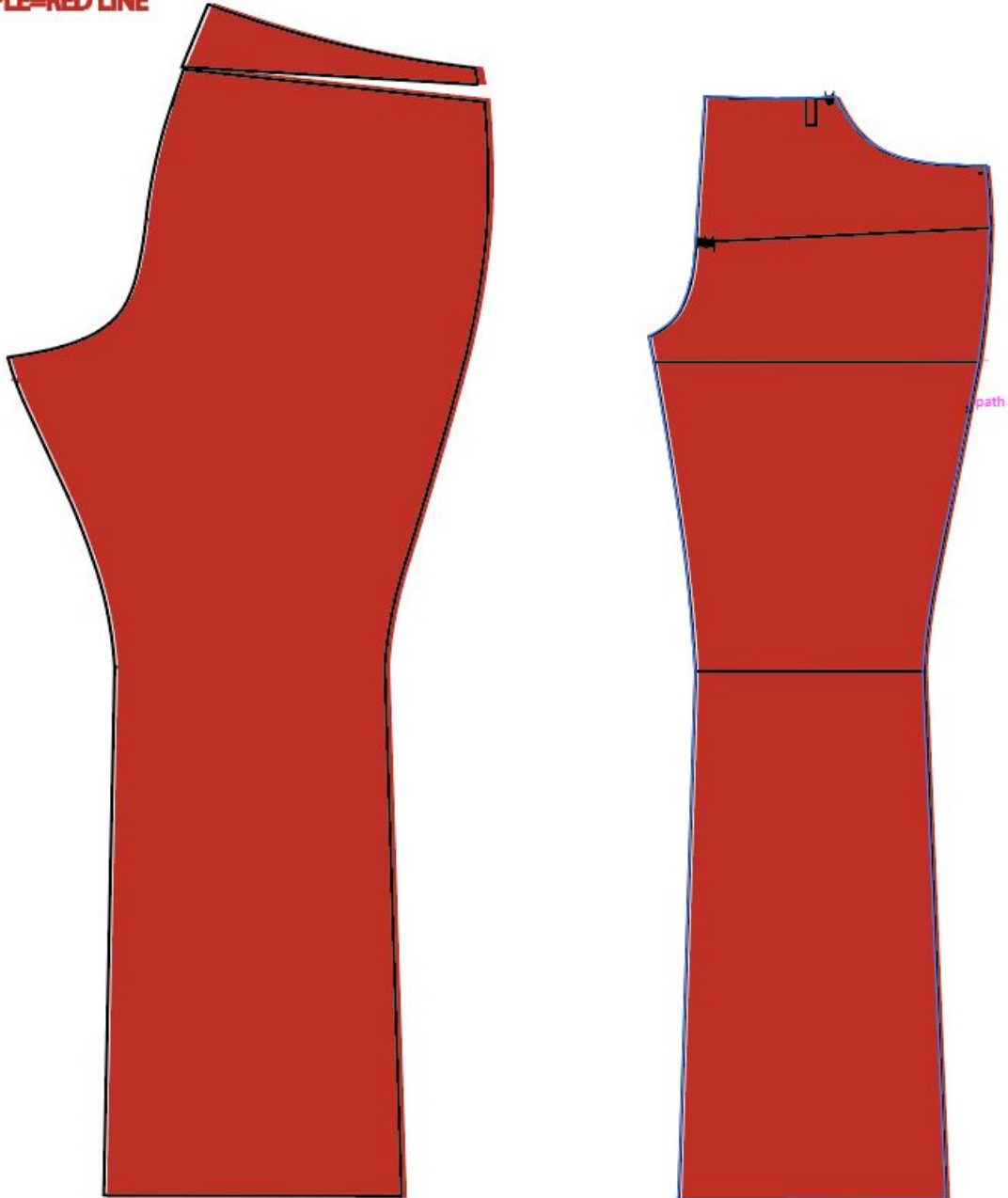
Secondly place block sample garment on form along with fit sample form to review overall fit, shape, grainline and balance.



FIT CONSISTENCY- PATTERN

When pattern properly applied

BLOCK=BLACK LINE
FIT SAMPLE=RED LINE



Block

1st fit



FIT CONSISTENCY- PATTERN

When pattern is not properly applied

The Bad Saddle Shape



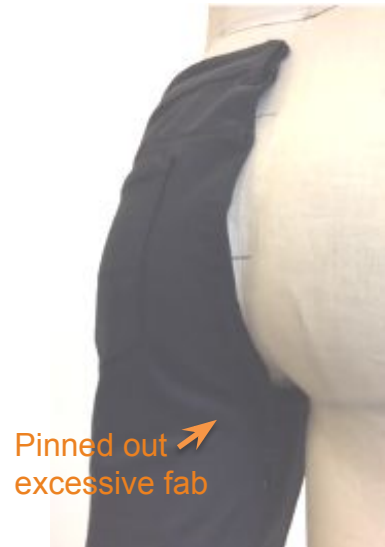
On the form - Saddle shape too wide causes:

- Excessive fabric at front & back rises



Saddle shape:

- Too wide
- Front and back rise hook too long



FIT CONSISTENCY- PATTERN

When pattern is properly applied

The Good Saddle Shape



On the form - Good saddle shape equal:

- No whiskers at front.
- No excess at back thigh.
- Rise shape hugs the form naturally.



Saddle shape:

- Just enough
Front and back
rise hook.



VERIFYING SIZE CONSISTENCY

Petite to Plus - Visual Verification

Don't just convert the measurements

Missy

Petite



Review the Aesthetic conversion and use Landmarks for Gender/Form

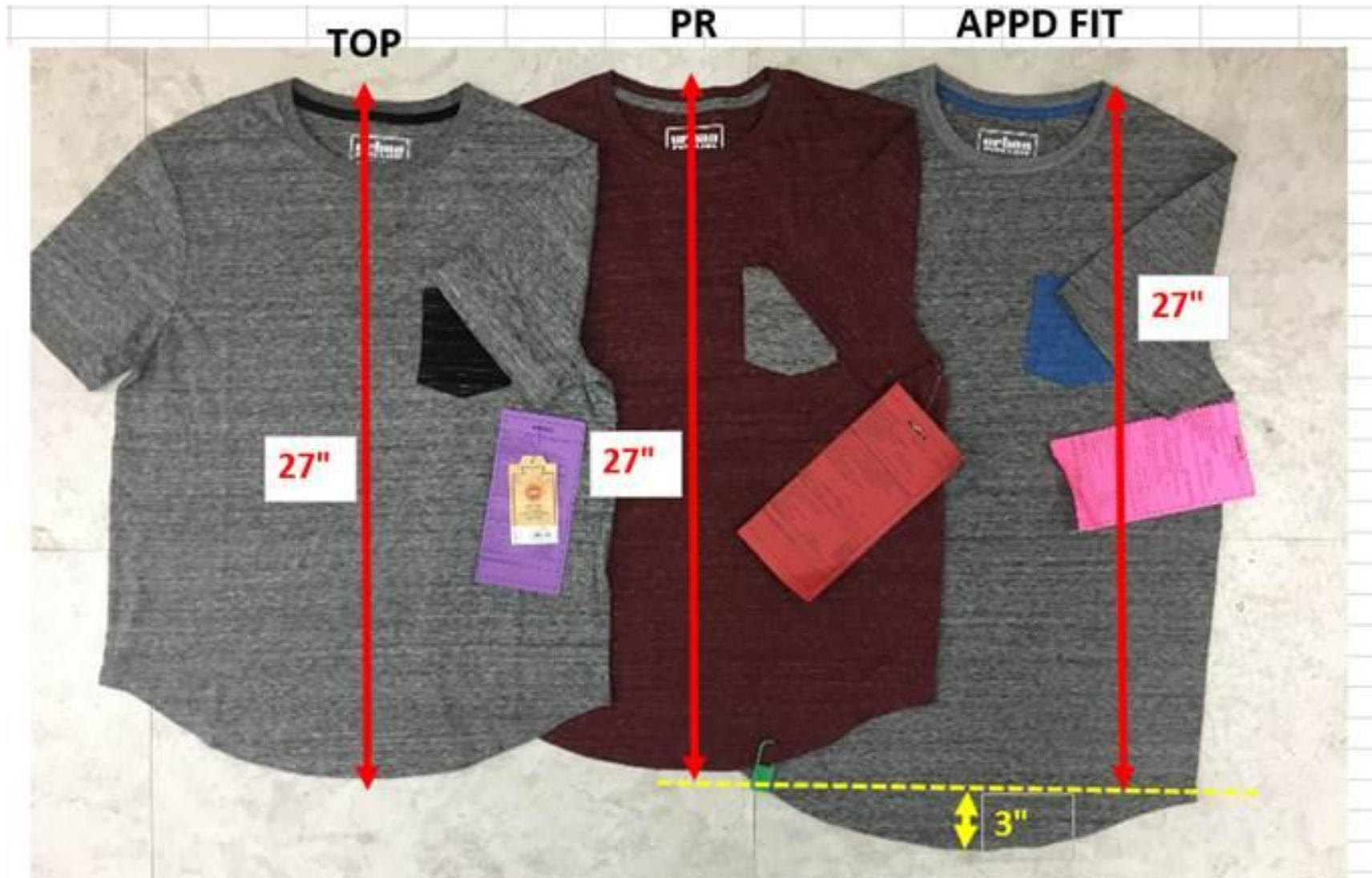
- Did the style convert properly?

Check: Length, Body Ease, Balance, Neckline, Sleeve Length and any details like Pockets.
On Pants pay attention to leg shape & opening. Make sure the leg silhouette looks consistent to the Reg style.

Apply similar concept for Men's Reg, Tall, Bigman; Jr to Jr Plus, Childrenswear Infant/Toddler to Little Boy/Girl and Big Boy/Girl

PRODUCTION VERIFICATION

Fit Approval to PR to Production (TOP)



PR Meetings

Kohl's & CTDs are responsible to document in the Tech Pack important information that must transfer to production.

- **Critical Points of Attention** assist with transfer of HIGHLY SENSITIVE points to positively execute production: measurements, shapes, construction, sewing/handling, visuals that impact the Customer's Expectations

At the PR Meeting be sure to uphold expectations & drive consistency:

- Discuss fit and construction standards
- Review Critical Points of Attention - to eliminate defects and drive consistency in production
- Review on Dressform: Fit Approval to PR Approval
- Align on where QA should be "In-Line" inspecting
- Review any additional Fabrications and alert IF different specs are required for production.

VERIFYING CONSISTENCY- FIT VS PR



VERIFYING CONSISTENCY- FIT VS PR



POINTS OF RISK IN PRODUCTION

What should your Factory be doing to drive consistency?

- Run a pilot of Full Sizes to verify grading is consistent with Tech pack
- Verify that there is consistency from Fit Approval to PR to Pilot and/or Production.
 - Validate consistency between all samples on form
- Verify that each Fabrication within a style has the correct pattern for accurate fit and comfort BEFORE cutting.
- Checking shrinkage on the bulk goods, grouping like bolts together and adjusting shrinkage for each “group”
- Post Critical Points of Attention for Sewing Line.
- Ask QA to be inspecting at CPA and Key Measurement, esp. Children’s Safety critical measurements.
- Provide L&F QA the CPAs in addition to the Measurements when Auditing at end of line.

WHAT DRIVES QUALITY INCONSISTENCY?

DEVELOPMENT

- ❑ Not using TOOLS like the FIT LIBRARY or REFERENCE PATTERNS
- ❑ Not referencing TECH PACK seasonally on “Carry-overs” or “Repeat” styles

SAMPLES

- ❑ Not using Brand Landmarks
- ❑ Not fitting on proper dressform
- ❑ Not comparing overall fit intent from a previous style
 - ❑ Sending poor sample that do not meet expectations.

**QUALITY IS
MEASURED BY
CONSISTENCY:
CUSTOMER**

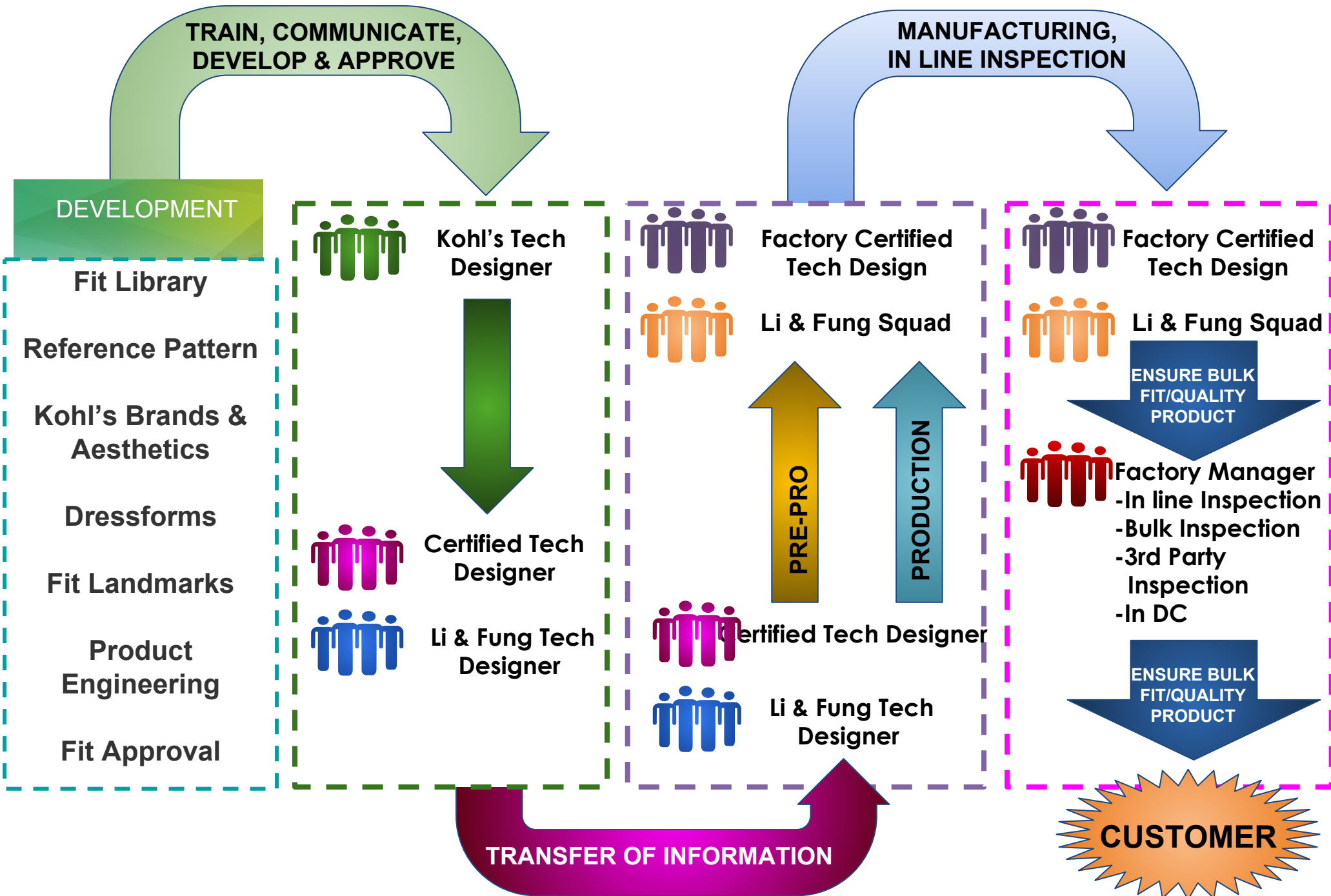
PRE-PRODUCTION

- ❑ Not applying proper shrinkage for garment washed programs
- ❑ Not applying grading proportionally to pattern. Grading Schematic
- ❑ No pre-meeting to review CPA/challenges during fit process
- ❑ Not comparing samples : sample room vs PR/Production
- ❑ Not adjusting pattern for multiple fabrications/fiber content

PRODUCTION

- ❑ Styles that are multi sourced at Vendors and Factories
- ❑ Not using Preferred Suppliers
- ❑ No In-line inspections
- ❑ Tolerances not being met
- ❑ No sewing operator training: cutting off too much seam allowance/not following curves.
- ❑ Cut/lay of fabric- not resting/ overstretching or cutting off grain
- ❑ Pressing garment to shape/meet specs

THE IMPROVEMENT CHAIN OF CONSISTENCY

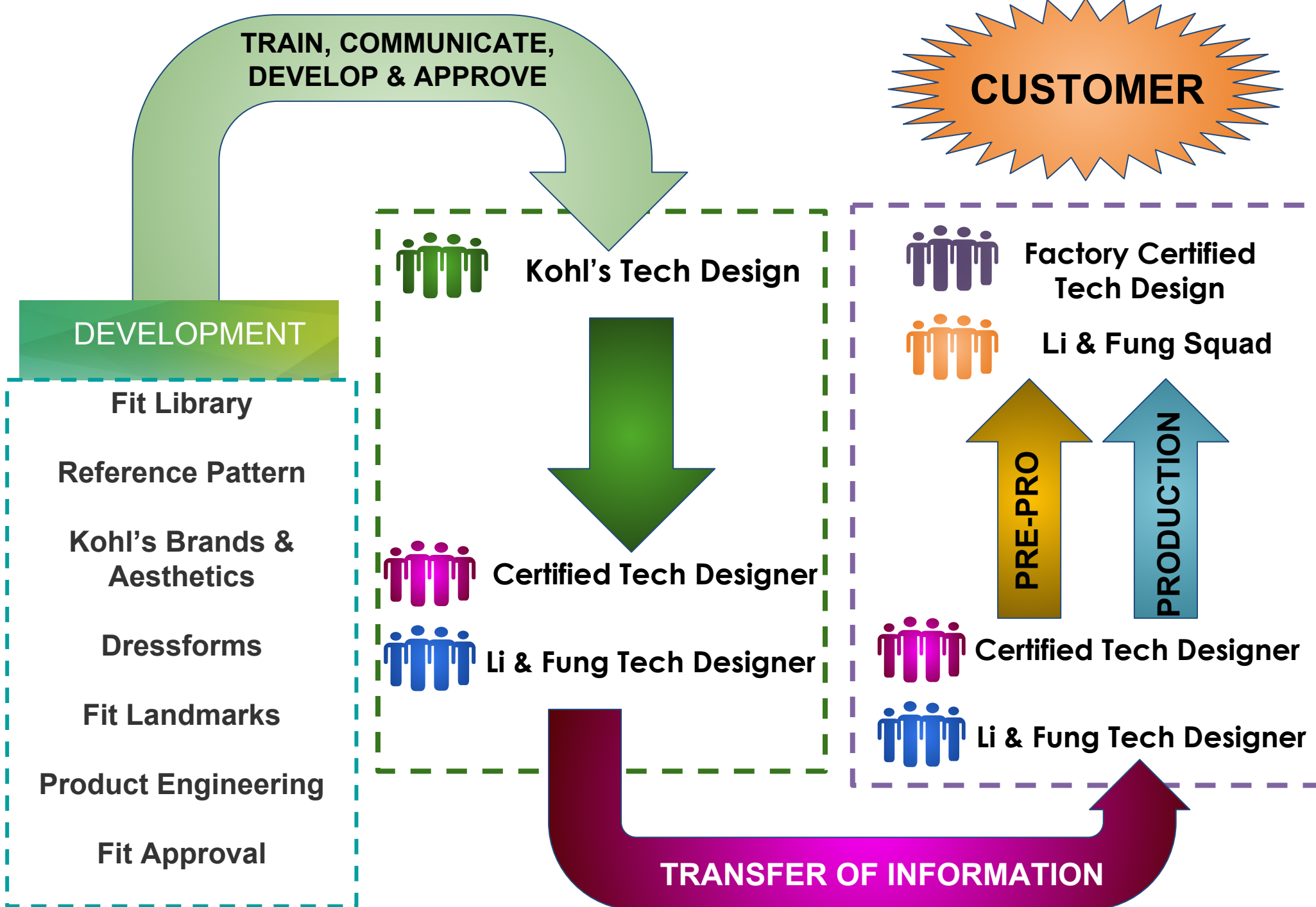


Q & A

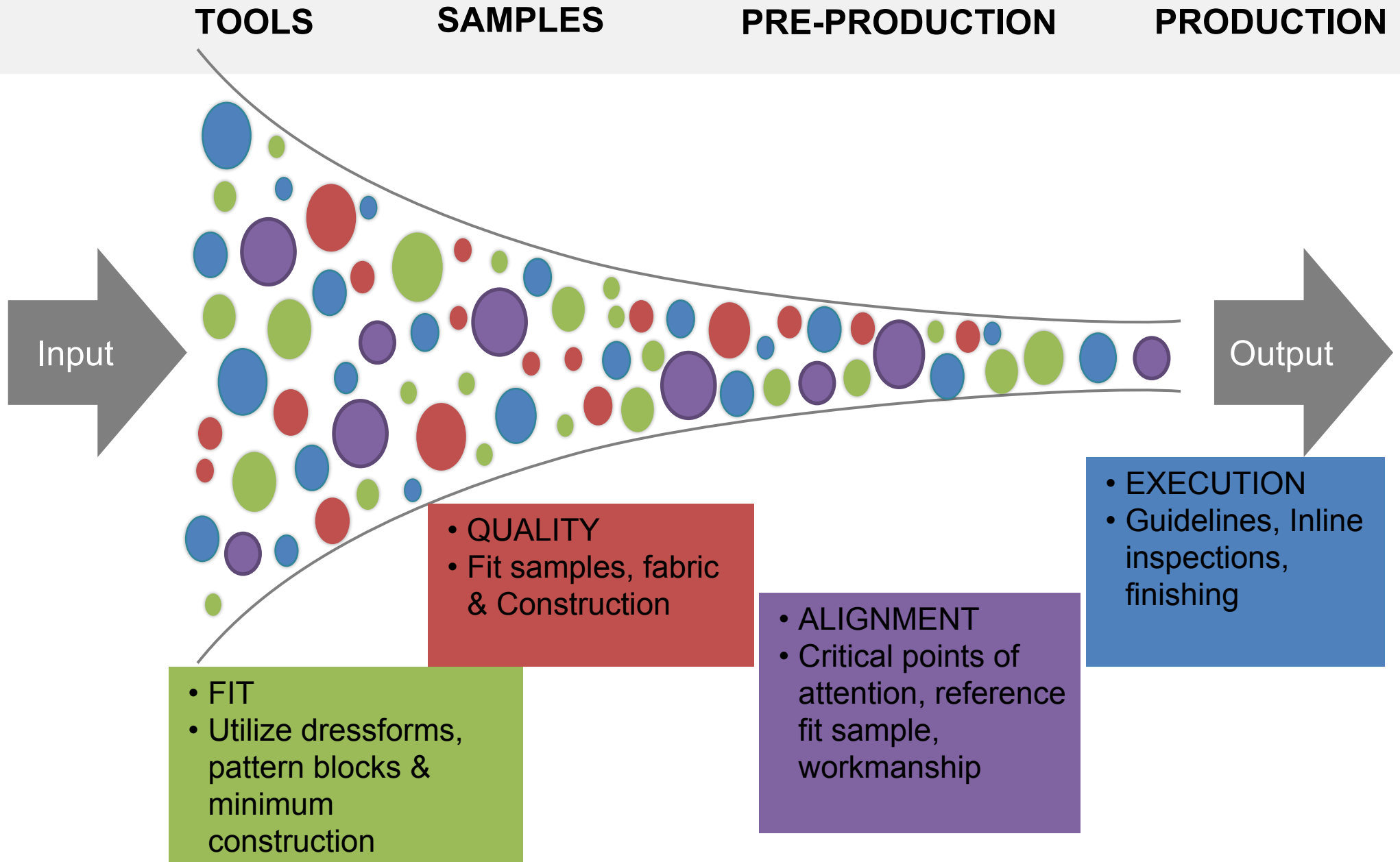
KOHL'S

Kohl's Department Stores

THE IMPROVEMENT CHAIN OF CONSISTENCY



CONSISTENCY FROM START TO FINISH



CTD Survey on Consistency

<https://www.surveymonkey.com/r/YCZMLF9>

Survey Name: CTD - PR consistency questions

Dressform/Landmarks:

1. Do you put the **fit approved sample** on the dressform and **compare the PR sample side by side** on the dressform when approving a PR sample? (Yes/No Question) If not, Why?
2. Do you confirm that all **waist placements, armhole drops, lengths, & modesty landmarks** on PR samples match the fit approved sample? (Yes/No Question)

Patterns/Grading:

3. Do you have access to a pattern application to review grading? (Yes/No Question) If yes, at what point do you **review grading** for a style? (Open ended Question)
4. Do you **verify non graded details are accurate** at PR stage? (Yes/No Question) If so, How do you check these details are accurate? If not, Why?
5. Do you do a **pattern overlay** at PR stage if pattern corrections were given at fit approved sample to double check that the corrections were made? (Yes/No Question)
6. How do you work with the pattern maker/factory to adjust the **shrinkage on a pattern** so the sample represents the correct fit intent/measurements of a washed program? (Open Ended Question)

Design Intent:

7. Do you confirm that all internal/external **constructions match the DI page** at the PR stage? (Yes/No Question)

Cutting/Sewing/Trims/Components:

8. Do you validate constructions with the factory prior to the lines being set up to ensure there aren't **late construction changes** prior to production?
9. How do you address **cutting & sewing issues** on the PR sample with the factory? (Open ended question)
10. Do you inspect for the following **stitching related issues** at PR stage to make sure they match the fit approved sample? If so, how you review these stitching related issues? If not, Why?
 - SPI**
 - Seam Puckering**
 - Re-Work**
 - Tight/Loose Stitch Tension**
 - Shirring Distribution**
11. Do you inspect for the following **fabric related issues** at PR stage to make sure they match the fit approved sample? If so, How? If not, Why?
 - Fabric Torquing**
 - Fabric Flaws**
 - Grain Line**

CTD Survey on Consistency

12. Do you inspect the below **garment components** at PR evaluation & compare them back to the fit approved sample? If so, how do you compare these garment components back to the approved sample for accuracy? If not, Why?

- Mobilon Tape**
- Elastic**
- Facing/Binding**
- Rib Trim**
- Interlining**
- Tear Away Backing**
- Buttons**
- Zippers**
- Snaps**
- Embellishments**

Production/Factory/Finishing:

1. Do you confirm the below garment **finishing components** when reviewing a PR sample and communicate this info to the factory?
 - KTD Shipping Instructions**
 - KTD Pressing/Steaming Instructions**
 - Garment Wash on PR matches Approved Wash Panel**
 - Threads are trimmed**
2. Do you **make suggestions to the factory when folders/tools/templates should be built and used** for consistency in production? (Yes/No Question) If so, how do you work with the factory to ensure equipment and tools are available during production?
3. How do you communicate **Critical Points of Attention Pages** with the factory so that they are aware of what points to watch for during production? (Open ended Question)
4. If a program has **multiple fabrics-or-multiple washes**, do you check each fabric-or-wash separately at PR sample for fit consistently?(Yes/No Question)
5. If you have a **large unit order, do you check multiple samples** in the sewing line for consistency in product as a total program? (Yes/No Question) If yes, how do you determine how many styles to check per total units?
6. Do you pull multiple samples to confirm **safety requirements** are being followed during production? (Yes/No Question) If yes, how do you determine how many styles to check per total units?
7. Do you confirm the **sweater tension/stitch/wale count** is consistent over the course of sweater production? (Yes/No Question) If so, how do you determine how many sweater styles to check per total units?
8. What **PP meeting steps** do you take to make sure production matches approval? (Open ended Question)
9. **How do you drive consistency when reviewing PR samples beyond the requirements Kohl's gives you?** (Open ended question)
10. Please share your **best practices** when reviewing a PR sample to ensure consistency. (Open ended question)
11. Please **attach any supporting documentation (visuals/process)** documents to help support your responses to the above questions.

FIT CONSISTENCY- CONSTRUCTION

Garment should be checked for overall quality of construction, correct interior seaming and components (thread, interlining, etc.) as well as functionality of trims and accessories. If an area is failing to meet construction requirements as specified in OnePLM technical package, the CTD/KTD should advise how to correct.

Regional Preferred Suppliers can visit factories upon request to resolve issues.



WHEN DO WE KNOW WE HAVE NOT ACHIEVED CONSISTENCY (CUSTOMER) AT FIT APPROVAL

BY STYLE/CATEGORY/BRAND/FIT-CAMP

BY STYLE (TD/CTD)

- GARMENT
 - Not balanced on form and/or concerns about movement and comfort from KTD
- SPEC
 - Core measurements vary significantly from
 - Grade was not validated or is not in line with Kohl's Standards
- FABRICATION
 - ANALYZE ALL FABRICS WITHIN PROGRAM TO DETERMINE BEST APPROACH IN FIT
 - SIMPLIFY BY GROUPING SPECS FOR LIKE FABRICATIONS
 - VALIDATE CONSISTENCY ACROSS ALL
- NOT ACHIEVE: PRESAMPLES- FIT : CTD SEES IT IS BAD SAMPLE AND ASKING TO SEND. MR PUSHING TO SEND. CTD EMPOWERMENT

Role of Apparel CTD in Product Consistency Counter Samples and Co-Crete Samples

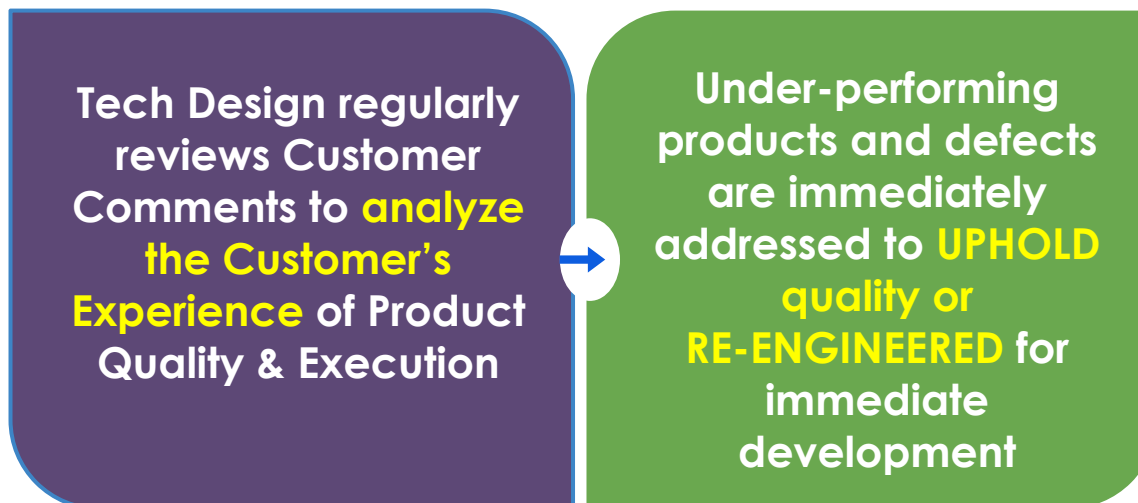
- CTD advise/provide most updated block patterns and landmark documents from fit library to the sample room.
- CTD help locate final approved production patterns to sample room as needed.
- CTD to communicate to KTD about missing pattern reference for start point before sample making.
- Carryovers/reorders: Work with sample room/MR to use correct bulk production pattern for counter samples.
- Reach out to Kohl's TD or Kohl's design if there are questions about development tech pack or fit intent.

QUALITY ENGINEERING FOR 5-STAR PRODUCT

Product Development Cycle



Post Product Analysis



Leggings **fit great** and stay up at waist. **Comfy** and cute style. I got **several pair** after trying the first pair out.



Needed a chair in orange to accent a room. This is **versatile** (can fold out of the way) and lightweight, but **sturdy**.



The **pant ran small and short... unusual for this brand.** They were hopefully mismarked... or the brand is changing.



This chair was comfortable and looked nice, but **only lasted a couple months. The plastic hinge at the bottom broke** and my son is only 139 lbs.

Fit Consistency- Landmark

When landmarks NOT properly applied - Fit stage

Apt.9 Essential Tee

Landmark



Fit Consistency - Fit Model

Comparing Model's measurements to Form's measurements

Women's Regular Models Summary- MKE				model sheets row		
	Med = C&B			Tiffany	Stephanie	Angela Aspensen
	Med = Apt 9, Sonoma, Active			Sz 10 Reg	Sz 10 Reg	Sz 12 Reg
	Sz 8 Reg	Sz 10 Reg	Sz 12 Reg			
POM	2016	2016	2016	2/12/2018	10/31/2017	9/5
Height	5'4" - 5'8"	5'4" - 5'8"	5'4" - 5'8"	5' 4 5/8"	5' 5"	5' 7 1/2"
Neck at Base	14 5/8	15	15 3/8	15	15 1/4	14 1/4
Above bust					36 3/4	37
*Bust Circumference- TAPE JNS AT FRT	36 1/2	37 1/2	39	38 1/4	38	37 3/4
Bust Height	47 7/8	47 7/8	47 3/8	46	47 3/8	48
Under bust	29 1/2	30 3/4	32 1/4	31	32	32 7/8
*Waist	29	30	31 1/2	31 1/2	30	31 1/2
Waist Height	41 1/2	41 1/2	41 1/2	40 3/4	41	43
Shoulder Girth 2 1/2" blw CF Hollow @ nk					43	41 1/4
Across Shoulder - outside- bone to bone	15 3/4	16	16 3/8	16	15 1/2	16
*Arm Length from CB - straight like form	31 1/4	31 1/2	31 3/4	31	30 7/8	31 1/4
*Muscle/ Upper Arm	11 3/8	11 7/8	12 1/2	12 1/2	11 7/8	12 1/2
Elbow - at center	9 1/2	9 3/4	10 1/8	9 3/4	9 1/2	10 1/4
Forearm-meas 6" from Wrist bone	9	9 3/8	9 1/2	9	9 7/8	9 3/4
Wrist	6	6 1/8	6 3/8	6 1/8	6 3/8	6 1/2
Center Front Neck to Waist-Length	13 5/8	13 5/8	13 5/8	12 7/8	12 1/2	14
Center Back Neck to Waist-Length	15 1/4	15 1/4	15 1/2	14	15 1/2	15 3/4
Apex to Apex Around Neck/Halter	27 7/8	28 3/8	29 3/8	7 1/2	28	30 1/4
Full Torso Length @ HPS	60 3/8	60 3/4	61 1/4	59 3/4	63 3/8	64 1/2
*High Hip Circumference	34 3/4	35 3/4	37 1/4		36 1/2	37 1/2
High Hip Height (4" fm waist)	37 5/8	37 5/8	37 5/8	36 7/8	37 3/4	39 1/2
*Low Hip Circumference	39 1/2	40 1/2	42		40 3/4	40 3/4
Low Hip Height (8" from waist)	33 5/8	33 5/8	33 5/8	32 3/4	33 3/4	35 1/2
Fullest Hip - if wider below Low Hip				42	41 3/4	42 1/2
*Thigh @1" fm crotch	22 3/4	23 1/2	24 1/2	25 1/4	24 1/4	24 5/8
Thigh @ 4" fm crotch	20 3/4	21 1/4	22	21	22 3/8	24 1/2
Thigh @ 6" fm crotch				18 3/8	20 1/2	21
Knee Circ. thru center of cap	14 1/8	14 1/2	15	14 1/2	14 1/4	14 3/4
Knee Height	17 7/8	17 7/8	17 7/8	17 5/8	17 1/2	18
Calf Circ. @ fullest pt	14 1/4	14 1/2	15	14	14	15 3/4
Calf-fullest Height	13 1/8	13 1/8	13 1/8	12 7/8	11 3/4	12 1/2
Ankle circ. @t bone	9	9 1/4	9 1/2	9 1/4	9 3/8	9 1/2
Total Rise	27 1/4	27 3/8	27 1/2	27 3/4	28 3/4	31 1/2
Inseam	31	31	31	30 1/4	30	31 1/4
Bra Size	34B/32C	36C	38C/36D	36C	34B/36A	34D/36C

Fit Consistency-Dressforms

Guideline to build in the bust shape



Size M(8/10) armhole

placement guideline

should be approximately

5" from apex on Missy

form for a consistent fit

Size 18W armhole

placement guideline

should be approximately

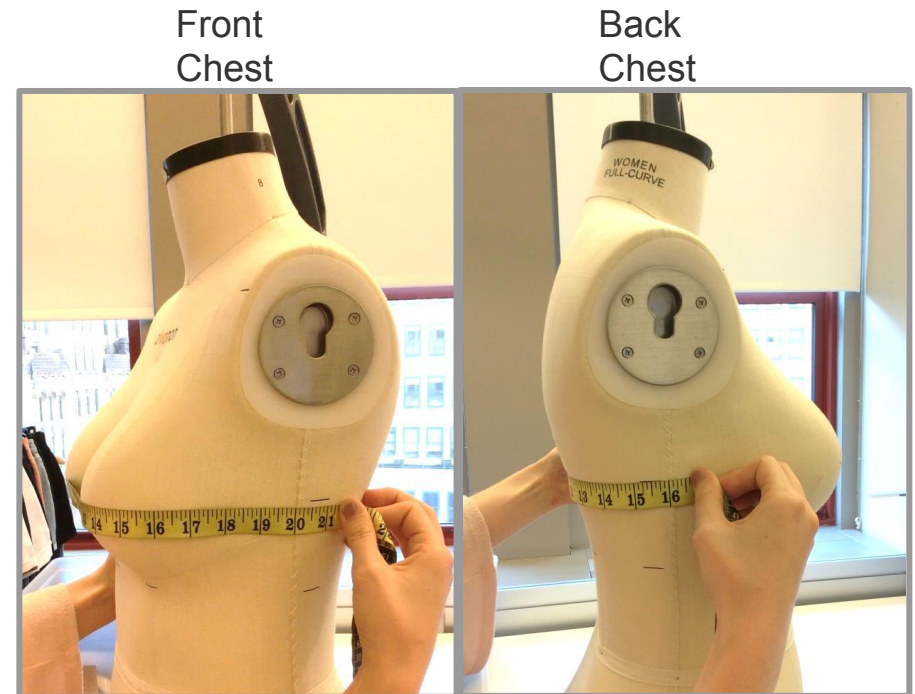
6" from apex on Plus

form for a consistent fit

Consistency in Fittings

Example of common fit issue

- Because the front chest and back chest are equal width, there is not enough room for a woman's bust.
- This causes other related Fit issues such as:
 - Side seams pulled toward front
 - Armhole shape distorted:
 - Front: too scooped out
 - Back: Too slanted/ does not have enough saddle depth

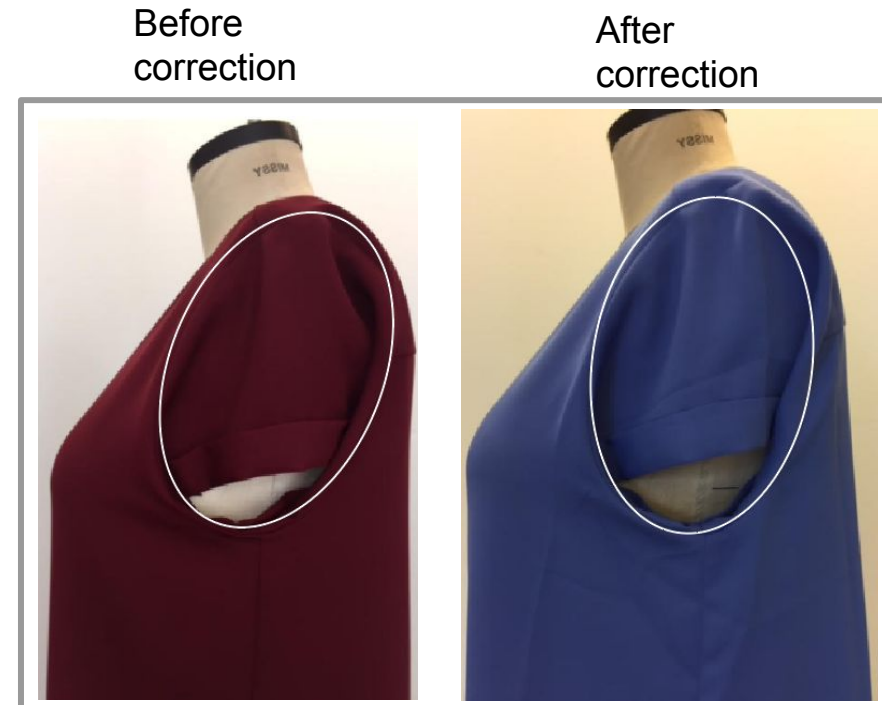
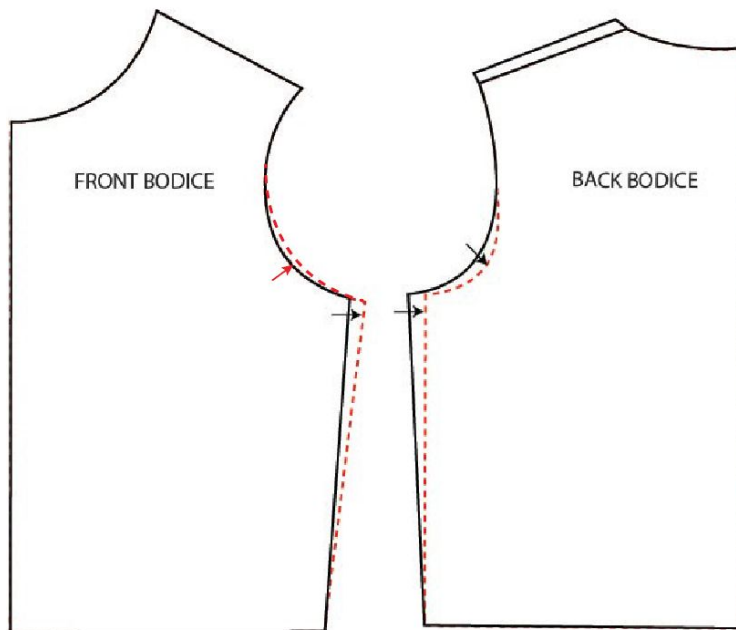


- Missy Size 8 Form:
Front Chest = 20" Back Chest = 16"
- The front and back chest width should not be equal on pattern/garment.
Garment front chest should be 1" bigger than back chest to allow for a woman's bust projection.

Consistency in Fittings

Example of common fit correction

- Increase the front chest to be 1" larger than the back, by shifting the side seam to the back.
- Decrease the back chest by shifting the side seam in.
- Correcting related fit issues:
 - Aligned side seam on garment to match with side seam on the form.
 - Balancing Armhole shape:
 - Front: Fill in front armhole curve
 - Back: Scoop out back armhole curve to gain more back saddle depth



FIT CONSISTENCY

Goal:

- Determine appropriate fit & maintain consistency throughout brand.

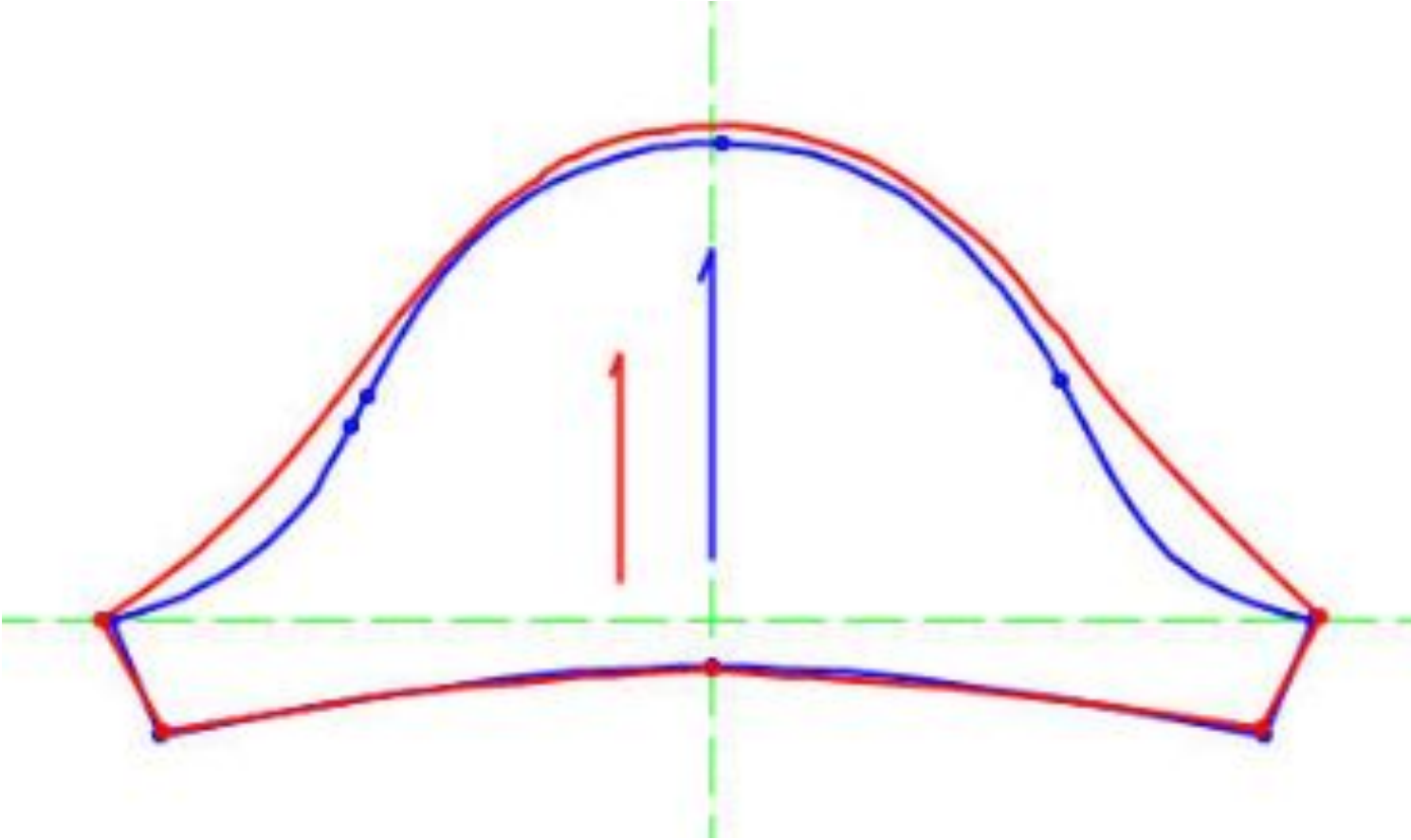
Seasonally, Fit is reviewed to interpret trends, styling and proportion without compromising the fit consistency of the brand.

The Technical Designer/CTD is responsible for executing fit intent and delivering size consistency.



FIT CONSISTENCY- PATTERN

When pattern is not properly applied



DRIVING TRAFFIC



OPERATIONAL EXCELLENCE

GRADING CONSISTENCY

Follow the Grade in OnePLM

ALWAYS contact Kohl's for questions or any deviation from grade

KOHL'S	JUNIORS(0000-19)(14P-30P)	<div style="border: 1px solid black; padding: 5px; display: inline-block;"> 1 1/2" Grade 9 to 11 </div>								General guideline Non Children Styles - Growth is affects
Description	Model Type									
JUNIORS(0000-19)(14P-30P)	Grading Model									
Number Format	Grading Method									
Fraction	Cumulative									
Code	Alt Description	Size Code	7	[9]	11	13	15	17	19	
A100	NK WIDTH@SEAM/EDGE	Grade	-1/8	0	1/8	1/4	3/8	1/2	5/8	
A110	FRT NK DROP@SEAM/EDGE	Grade	0	0	0	1/8	1/8	1/4	1/4	1/2 of the Neck Width
A250	ACROSS SHOULDER	Grade	-1/4	0	3/8	3/4	1	1 1/4	1 1/2	Grade is usually 1/2 of the body for Reg but taper off for Larger sizes
A254	ACROSS FRONT	Grade	-1/4	0	3/8	3/4	1 1/8	1 3/8	1 5/8	Grades same as Xshoulder for Reg
A255	ACROSS BACK	Grade	-1/4	0	3/8	3/4	1 1/8	1 3/8	1 5/8	Grades same as Xshoulder for Reg
A260H	CHEST 1" BLW AH RLXD-1/2 MEAS	Grade	-1/2	0	3/4	1 1/2	2 1/4	3	3 3/4	1/2 of Body Circumference
A270H	WAIST RLXD-TOPS-1/2 MEAS	Grade	-1/2	0	3/4	1 1/2	2 1/4	3	3 3/4	1/2 of Body Circumference
A283H	HIP-TOPS-1/2 MEAS	Grade	-1/2	0	3/4	1 1/2	2 1/4	3	3 3/4	1/2 of Body Circumference
A300	LEN HPS TO HEM	Grade	-3/8	0	3/8	3/4	1 1/8	1 1/2	1 7/8	Armhole Drop + 1/2 Rise Drop
A330	ARMHOLE DROP-FROM HPS	Grade	-1/4	0	1/4	1/2	3/4	7/8	1 1/8	Front neck drop + Cap
A340H	UA/MUSCLE 1" BLW AH-1/2 MEAS	Grade	-1/8	0	1/4	1/2	3/4	1	1 1/4	Cap width + Saddle
A352H-4W	SLV OPENING RLXD-1/2 MEAS. L/SLV	Grade	0	0	1/8	1/8	1/4	1/4	3/8	
A360-4W	SLV LEN FROM CB NK-L/SLV	Grade	-1/4	0	1/4	5/8	7/8	1 1/8	1 3/8	1/2 Across Shoulder + Cap Height
A400H	*WAIST@TOP EDGE-RLXD 1/2 MEAS	Grade	-1/2	0	3/4	1 1/2	2 1/4	3	3 3/4	1/2 of Body Circumference
A412H	LOW HIP #1 FM TOP EDGE-1/2 MEAS	Grade	-1/2	0	3/4	1 1/2	2 1/4	3	3 3/4	1/2 of Body Circumference
A425H	THIGH@1" BLW CROTCH PT-1/2 MEAS	Grade	-3/8	0	1/2	1	1 1/2	1 7/8	2 1/4	1/4 of front + Saddle Grade
A438H-08P	LEG OPENING RLXD-FULL LENGTH 1/2 MEAS	Grade	-1/8	0	1/8	1/4	3/8	1/2	5/8	
A450	*FRT RISE TO WB SEAM/TOP EDGE	Grade	-1/4	0	3/8	3/4	1 1/8	1 1/2	1 3/4	Rise Drop + Saddle width
A460	BK RISE TO WB SEAM/TOP EDGE	Grade	-1/4	0	3/8	3/4	1 1/8	1 1/2	1 3/4	Rise Drop + Saddle width

CONVERSION CONSISTENCY

Follow the Petite Conversion

***ALWAYS** contact Kohl's for questions or any deviation*

Follow the below diagram when converting pattern from Womens Reg to Petite.

