

KOHL'S

How To Take A Photo On A Dressform

Global Technical Design
Apparel Resource Tools
11-17-2020

All three points must be followed when taking a photo.

1. Dressform:

- a. Must use KOHL'S standard dressform.
See [Dress Form Chart](#) found on K-Link

2. Background:

- a. Use a Solid Color Background
- b. Make sure there is nothing behind the garment.
i.e. no other dressforms

3. Color of Garment:

- a. Avoid white or black color garments.

How to put a garment on the dressform

Watch How to Fit on Form Videos on K-Link

- Mark High Point Shoulder Fold line of garment before placing on form.
- Note where garment HPS fold lands in relation to shoulder seam of the dressform as you review garment balance.

K-Link
by KOHLS

GLOBAL TECHNICAL DESIGN 1

▸ **Apparel Resource Tools** 2

- Apparel Body Charts & Grading Schematics
- Apparel Assistant TD/CTD Level 1
- Apparel Associate TD/CTD Level 2
- Apparel Technical Designer TD/CTD Level 3
- Apparel Mentor TD/CTD Level 4
- Home Hardlines
- Home Textiles

QUALITY ASSURANCE

PREFERRED TRIM SUPPLIERS

FOOTWEAR

ONEPLM

MATERIAL MANAGEMENT

TIME AND ACTION CALENDAR | NOTICE OF CHANGE (NOC)

Policies and Procedures

- [Kohl's Fit Sample Policy](#) (Last Updated: 03/21/2018)
- [Required Fields on Fit Eval](#) (Last Updated: 03/28/2019)
- [Kohl's Fit Comment Template](#) (Last Updated: 03/26/2020)
- [Critical Points of Attention Expectations](#) (Last Updated: 03/01/2019)
- [Creating Petite in OnePLM](#) (Last Updated: 03/12/2020)

Dress Forms

- [Dress Form Chart](#) (Last Updated: 04/14/2020)
- [Alvanon Order Form](#) (Last Updated: 03/25/2020)

Fit Library

- [Fit Library Index](#) (Last Updated: 05/08/2019)

Stitches & Seams

- [Stitch and Seam Matrix](#) (Last Updated: 01/07/2003)
- [ISO Numbers](#) (Last Updated: 03/26/2018)

How to Layout

- [How to Layout Tops](#) (Last Updated: 06/01/2018)
- [How to Layout Pants](#) (Last Updated: 06/01/2018)
- [How to Layout Sweaters](#) (Last Updated: 06/01/2018)

How to Fit on Form 3

- [How to Fit Knit Tops](#) (Last Updated: 06/01/2018)
- [How to Fit Woven Shirts](#) (Last Updated: 06/01/2018)
- [How to Fit Mens Bottoms](#) (Last Updated: 06/01/2018)

How to put a garment on the dress form - Tops & Dresses

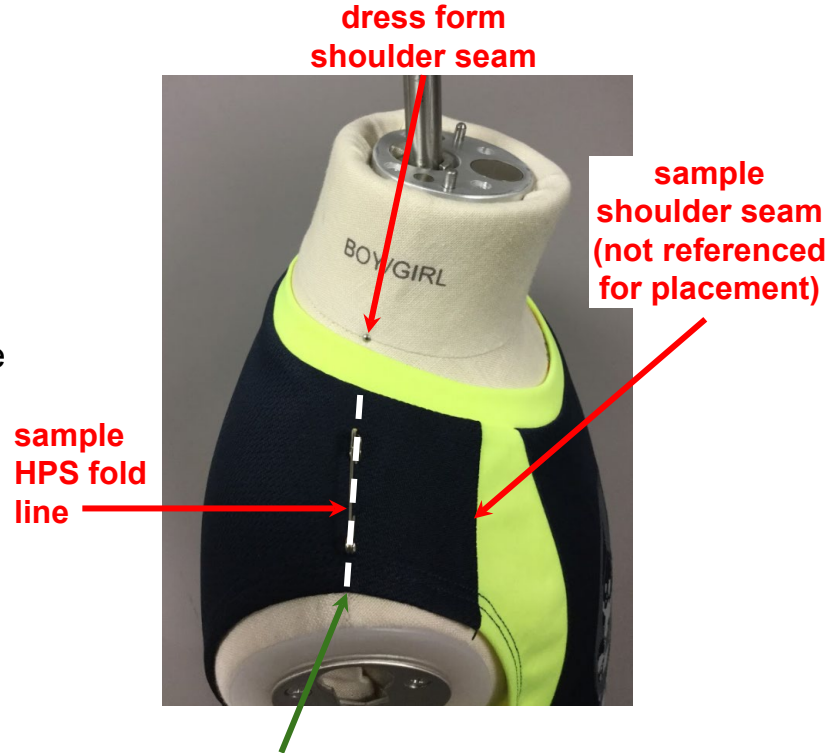
Mark HPS fold line of garment with safety pin or chalk. The HPS fold line may be a folded edge or a seam.

See [Kohls How to Measure guide](#) for High Point Shoulder fold definition and how to find it from bottom of armhole.

Note where HPS fold line sits in relation to shoulder seam of dressform when garment is allowed to fall naturally on the dressform. Standard HPS fold line placement can be referenced in Brand/Category body landmark chart found in the fit library (where standardized).

How to use the HPS fold line placement:

- Compare consistency between vendor CTD and Kohls TD physical garment placement on dressform.
- Identify balance issues when HPS fold line is different from normal body landmark standard.
- Identify balance issues when HPS fold line shifts after live model moves in garment.
- Compare consistency between 3D garment placement on digital dressform vs. physical garment on dressform.



HPS fold line @ dressform shoulder seam

How to put a garment on the dressform - Tops & Dresses



Include the top of the dressform to establish the body landmarks.

Include dressform arms on styles with sleeves.

Do not include dressform arms on sleeveless styles

Extend the photo 3" past the bottom of the garment



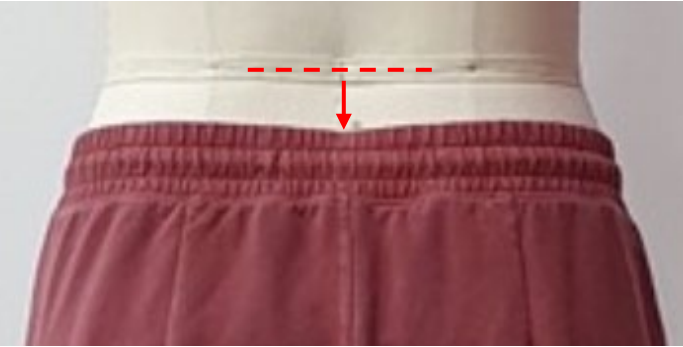
How to put a garment on the dressform - Bottoms & Skirts

Place garment on the dressform following Waist Placement POMs: A003, A004, A005

Center of waist tape
on dressform to top edge of
garment at CF

Center of waist tape
on dressform to top edge
of garment at side seam

Center of waist tape
on dressform to top edge
of garment at CB



How to put a garment on the dressform - Bottoms & Skirts



Include the waist tape to establish body landmarks.

Do not include dressform arms on bottom styles

Include the entire leg to see body landmarks.

Camera Focal Point

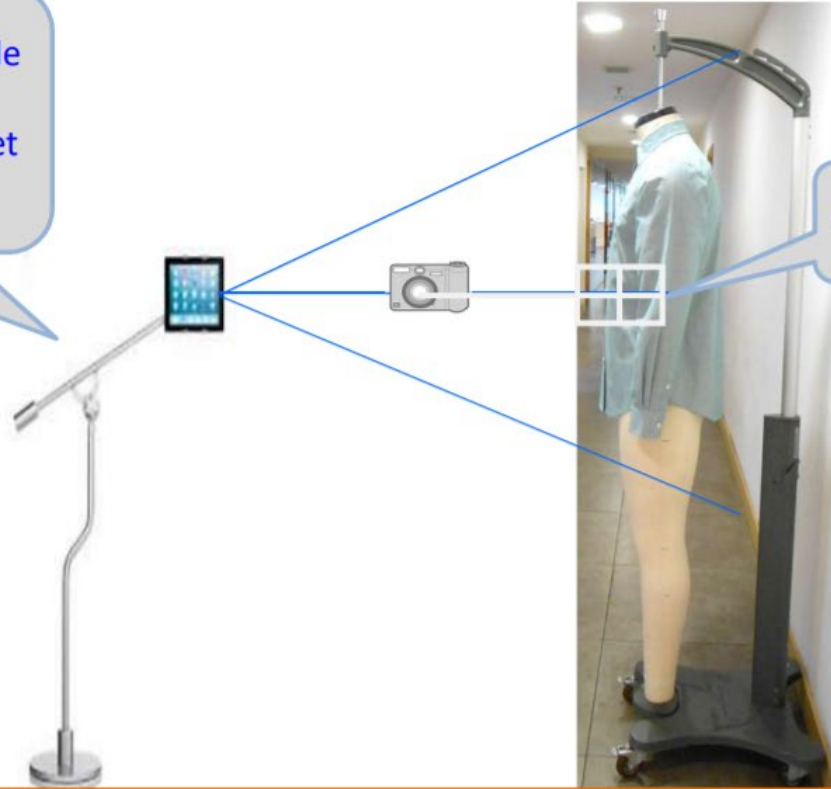


Camera Focal Point



Camera Focal Point - Tops

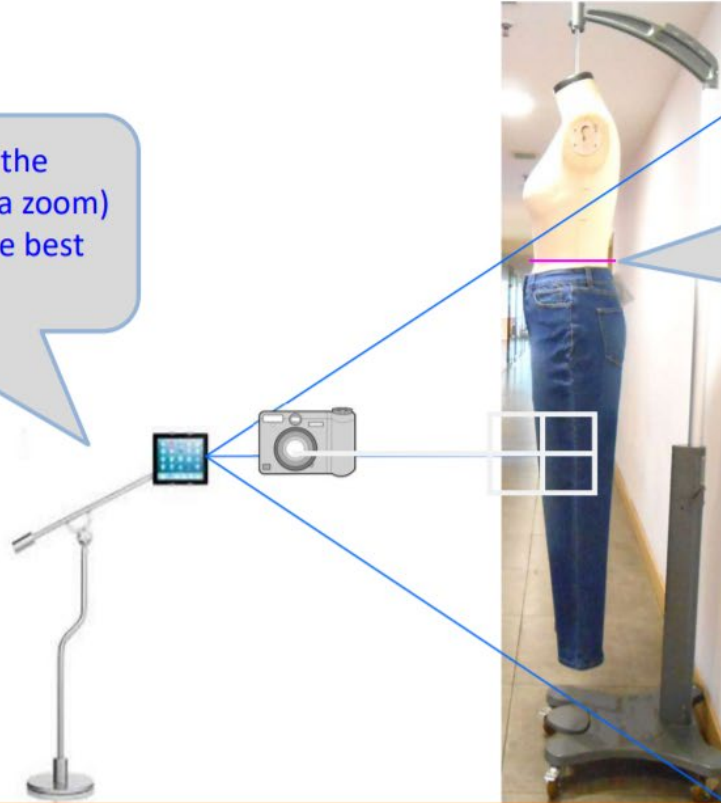
Tablet with camera & adjustable stand to ensure consistency angle of the photo. Prefer to set up camera with gridlines.



Camera focal point

Camera Focal Point - Bottoms

Adjust height and distance of the standing (or adjust the camera zoom) as needed to ensure to get the best angle and covering area.



Waistline tape on Dressform must be visible on 3 side (front/side/ back) view photos

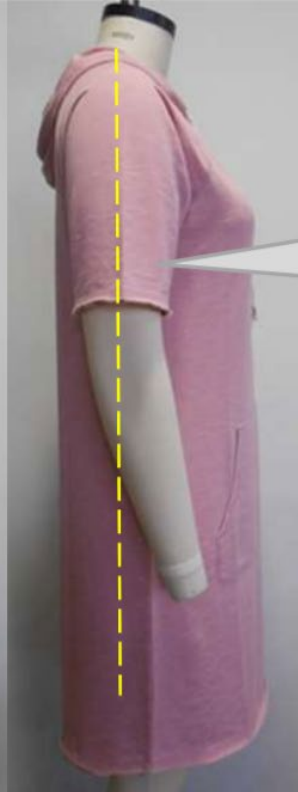


How to take the side view photo

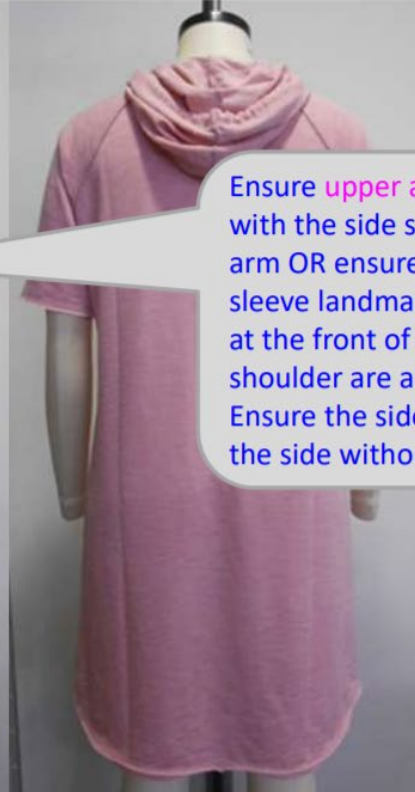
Front View



Side View



Back View

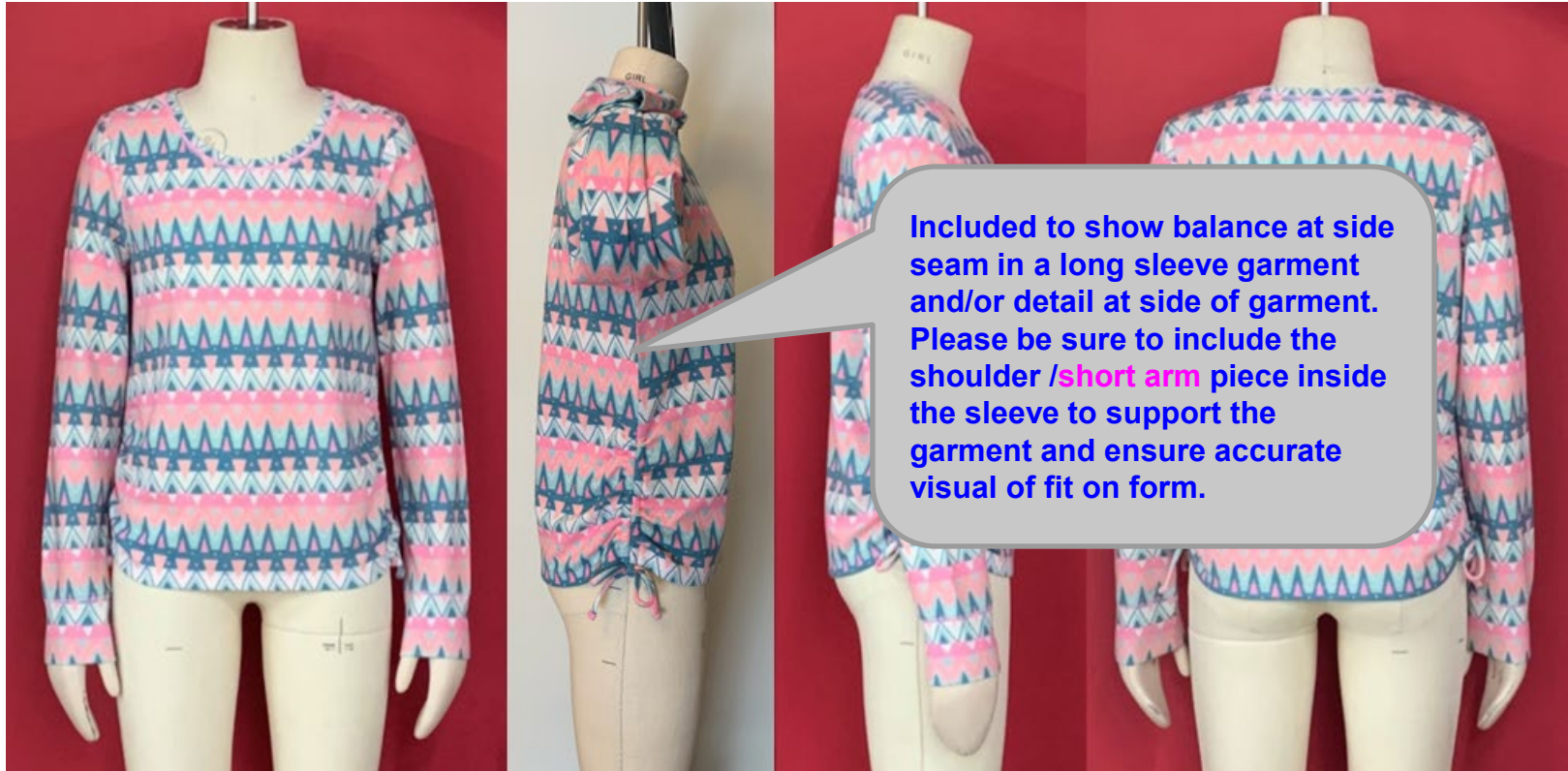


Ensure upper arm is parallel with the side seam once put the arm OR ensure the body and sleeve landmark (the black line) at the front of dressform shoulder are aligned.
Ensure the side view photo is the side without Sample tag



Additional side view photo for Long sleeve tops

Additional Side View



Cropping Photos

Crop Excess White Space Around Photos



Crop front, side and back photos at approximately the same points on the dress form.



Background Good vs Bad

Good - solid color backdrop with nothing behind dressform.



Bad - no backdrop and dressforms are behind the main dressform making it hard to review the garment details



Fit Evaluation Photo Template

Season & Style #	Sample Status	HPS Fold line: (pick best option) @ dressform shoulder seam meas " forward to dressform shoulder seam meas " behind dressform shoulder seam	Vendor
Front View	Side View	Back View	
Date	COP & Factory Name	CTD & Level	

Fit Evaluation Photo Template - Example

SP'20 - WA01K049RE4

PPS

Vendor: NOBLAND

HPS Fold line @ dressform shoulder seam



Date: 06. Feb. 2020

COP: PUKU

By: Jenny Truong (FTD / Asst.CTD)

Additional Photo Examples: Fit suggestions

INQUIRY : WA02K010R

DEC/11/2019

I reviewed the test sample prior to 1st fit sample.

CB seam is added to test sample by mistake. Please disregard CB seam.

- I have been informed the back neck is changed to straight as below test sample.
Back length and strap length needs to be adjusted accordingly.
- Chest is too tight. I would like to increase the chest $3/4$ " as below pinned image.
- Strap is adjusted to 11" instead of given spec 7" but it is still too short for straight back neck.
I would like to increase the strap length to 12 $1/2$ "
- Distance between back straps looks wide.
Please advise this is ok as test sample or it needs to be brought in $1/2$ " at each side.
- V neckline is straight on pattern. But it looks curved slightly on form. We will keep as test sample.

Code	Description	Tol(-)	Tol(+)	Spec	Rev
A001-LA000-20	LADIES ALPHA SIZES XXS(000-00) XS(0-2) S(4-6) M(8-10) L(12-14) XL(16-18) XXL(20)				
A303	*FRT LEN HPS TO HEM DEV ONLY	-1/2	1/2	25 1/2	
A305	*MG* FRT LEN PEAK TO HEM	-1/4	3/8	21	
A305	*MG* BACK LEN PEAK TO HEM	-1/4	3/8	20 1/2	
A262H	CHEST@AH RLXD -1/2 MEAS.	-1/2	1/2	17	
A272PK	WAIST PLCMT FM PEAK	0	0	8 1/2	
A270H	WAIST RLXD-TOPS-1/2 MEAS	-1/2	1/2	18 3/4	
A292H	SWEEP ALONG CURVE-1/2 MEAS	-1/2	1/2	25	
A337	*FT AH CURVE CAMI *FOLLOW CPA	-1/4	1/4	6	5 1/2
A171	*MG* DISTANCE BTW STRAPS@FRT-CAMI	-1/4	1/4	7 3/4	
A115 NG	FRT NK DROP-CAMI-NG	-1/8	1/8	3 1/4	3 1/2
A172	*MG* DISTANCE BTW STRAPS@BK-CAMI	-1/4	1/4	7 1/2	
A167	*MG* STRAP LENGTH-TOTAL PEAK TO PEAK	-1/2	1/2	8	7

→ 16 1/2

→ 17 3/4

→ WILL SUGGEST

→ 6 1/2

→ 12 1/2

Page 1

TEST SAMPLE



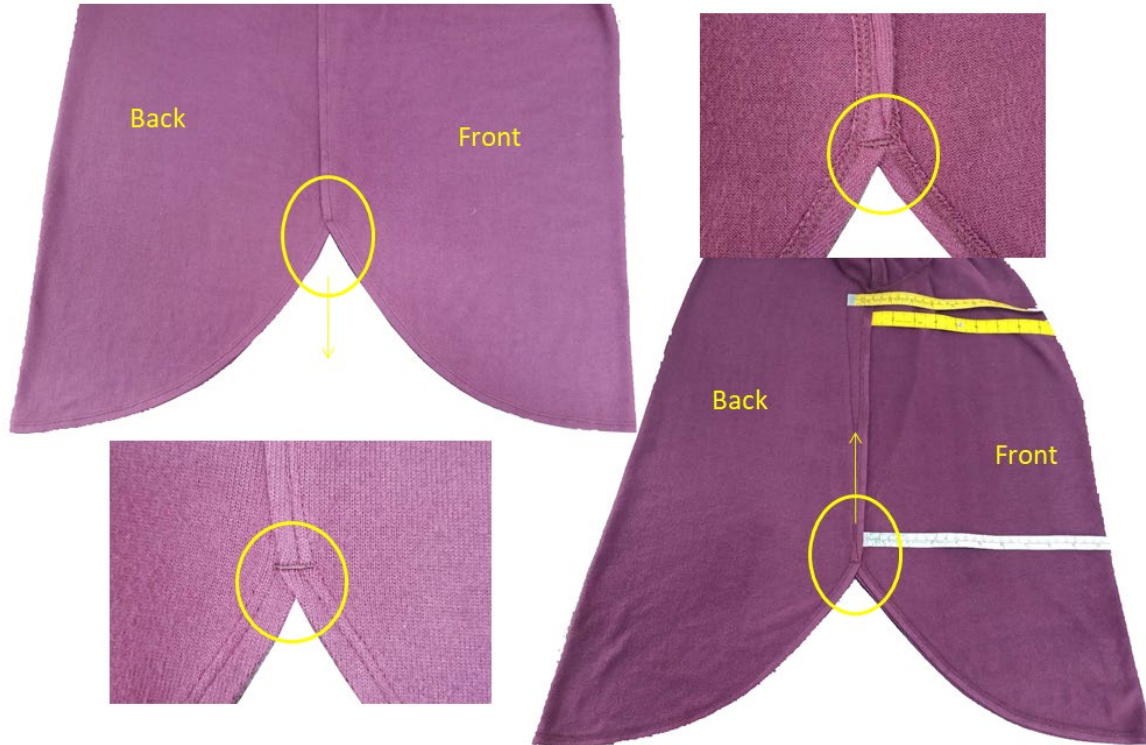
PINNED SAMPLE



Additional Photo Examples: Construction/Workmanship

Date: 3/20/20

Style: WA03K051 – Construction Photos



Attaching A Photo in OnePLM Fit Evaluation

1. Note each Image must have a unique name. Refer to [Image File Types and Size Limitations](#) found in the CTD OnePLM Manual. Name image according to style # and Fit sample round before uploading into OnePLM.
2. Upload Front, Side, and Back Photos to the attachment tab on each Fit Evaluation Sample Round in OnePLM following the instructions for [Uploading and Replacing Files/Images/Patterns](#) found in the CTD OnePLM Training Manual.
3. In Attachments Tab, vendor must label the photo IMAGE and mark Sort #1 for the photo image to show up in the image box of the Fit Evaluation page. See additional instructions for [Revert to Previous File/Sorting Attachments](#) as well as [Deleting Files/Image](#) found in the CTD OnePLM Training Manual.
4. Use Description box as needed to provide description to Kohls' TD.

