

KOHL'S

EAS Tagging Guide

This document details the EAS tagging requirements for our vendor source-tagging programs.

Contents

EAS Source Tagging- Hard Tag Requirements	3
Targeted Merchandise	3
Hard Tag Placement.....	3
Ordering Recycled Hard Tags	6
Registration for Kohl’s Ordering Website	6
EAS Source Tagging- Lanyard Tag Requirements	6
Targeted Merchandise	6
Lanyard Tag Placement.....	7
Fashion and Sterling Ring Cards	9
Contact Information	9
Locking Ring Card Instructions (From A&H Mfg. Co)	10
EAS Source Tagging- MHz Tag Requirements	11
Targeted Merchandise	11
Tag Placement.....	11
Ordering EAS Labels through All Tag®	11
Registration Process.....	11
Part Number	11
Additional Ordering Information	11

EAS Source Tagging - Hard Tag Requirements

- Kohl's has found that vendors who attach EAS hard tags at the production facility are more efficient than the application process at store level
- *Ecommerce receipt units should not receive an EAS hard tag*
- All new vendors within the targeted departments should contact Kohl's Loss Prevention to ensure proper tagging requirements are met:
 - Phone: 262-703-1874
 - E-mail: cari.studyvin@kohls.com

Targeted Merchandise

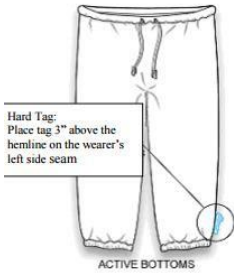
The following targeted merchandise has been selected based on theft trends and inventory shortage rates.

- Juniors Apparel
 - Brands – All
 - Retail Price – \$19.99 and higher
- Men's Denim
 - Brands – Urban Pipeline, Sonoma
 - Retail Price – All price points
- Men's Suit Separates
 - Brands – Haggard, Apt 9, Van Heusen
 - Retail Price – \$39.99 and higher
- Outerwear (Men's and Women's)
 - Brands – Columbia, Under Armour
 - Retail Price – \$39.99 and higher
- Athletic Apparel (Men's and Women's)
 - Brands – Under Armour
 - Retail Price – \$19.99 and higher
- Misses Apparel
 - Brands – LC, SVVW, Draper/James, Sonoma, C&B
 - Retail Price – \$29.99 and higher
- Intimate Apparel
 - Brands – So..., Spanx, Naomi & Nicole
 - Retail Price – \$9.99 and higher

Hard Tag Placement

- Hard tags should be placed as depicted below, on the next page.
- As a general rule, the tag should be placed in the seam, 3 inches above hem, on the wearer's left side.
- Please direct any questions to our Source Tagging Team:
 - Phone: 262-832-4413
 - E-mail: cari.studyvin@kohls.com

Active Bottoms:



Active Tops / Hoodies:



Camisole:



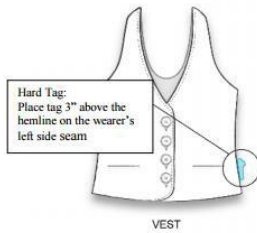
Cardigan Sweaters:



Athletic Jerseys:



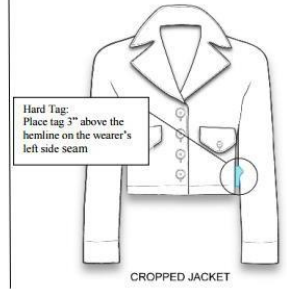
Vests:



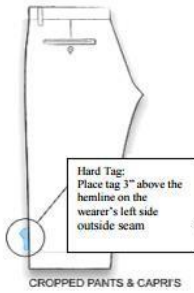
Casual Suits & Jackets:



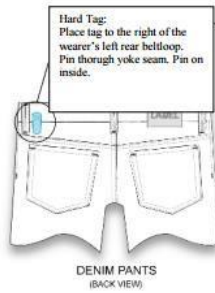
Cropped Jackets:



Cropped Pants & Capris:



Denim Pants, Folded:



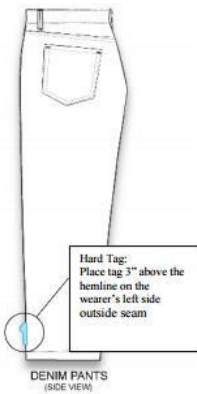
Knit Top:



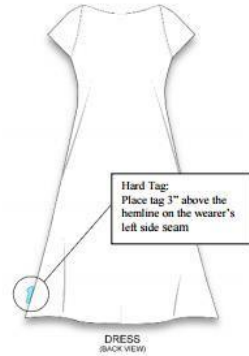
Outerwear / Jacket:



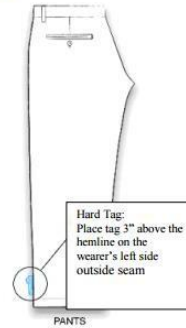
Denim Pants, Hanging:



Dress:



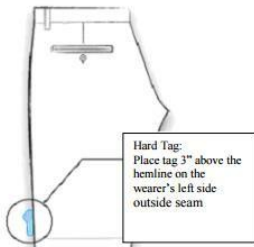
Pants:



Short Shorts:

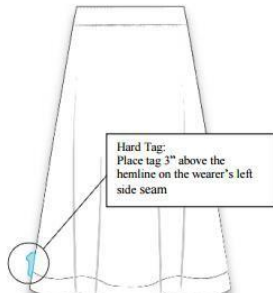


Shorts & Bermuda Shorts:



SHORTS & BERMUDA SHORTS

Skirt:



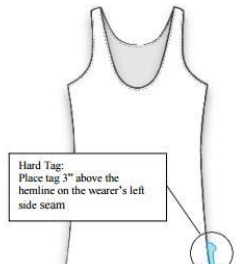
LONG SKIRT
(BACK VIEW)

Sweater Dress



SWEATER DRESS

Tank-Top:



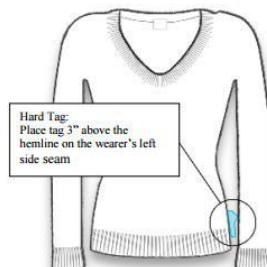
TANK TOP

Skirt / Mini-Skirt:



SKIRT / MINI-SKIRT
(FRONT VIEW)

Sweater:



SWEATER

Woven Shirt / Folded Only:



WOVEN SHIRT / FOLDED ONLY
(BACK VIEW)

Woven Shirt/ Hung Only:



WOVEN SHIRT / HUNG ONLY
(BACK VIEW)

Intimates:



CAMISOLE



TANK TOP



BRA

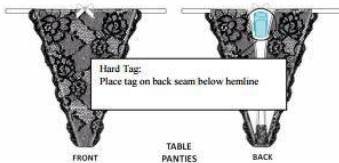
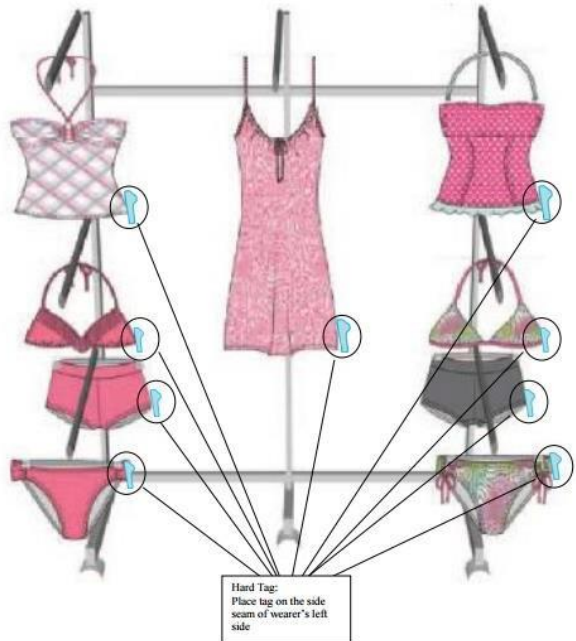


TABLE PANTIES

Jr SwimWear:



Hard Tag:
Place tag on the side seam of wearer's left side

NOTE: If there is not a side seam, please place tag on back on top seam.

Ordering Recycled Hard Tags

- Kohl's covers the costs of the tags and freight
- All shipments will be delivered DDU (Delivery Duties Unpaid)
- It is the responsibility of the vendor to cover import duties, taxes, etc. (if applicable)
- Vendors are liable to provide accurate and correct information within the ordering website
- Kohl's reserves the right to charge back vendors for the incorrect tags being ordered at cost of tags plus handling and administrative costs incurred

Registration for Kohl's Ordering Website

Jenny Shen:

Jenny.Shen@pactgroup.com



EAS Source Tagging - Lanyard Tag Requirements

- Kohl's requests the following targeted merchandise be correctly protected with the appropriate lanyard tag

Targeted Merchandise

Targeted merchandise is as follows and has been selected based on theft trends and inventory shortage rates.

- Bedding - Comforters and Coverlets, 800TC sheets
 - Brands – SVVW, LC, Chaps
 - Retail Price – \$39.99 and higher
- Handbags
 - Brands - SVVW, Dana, LC, Stone & Co, Draper James, Nine West
 - Retail Price – \$29.99 and higher
- Luggage
 - Brands – Samsonite, Ricardo, Delsey, Chaps
 - Retail Price – \$59.99 and higher

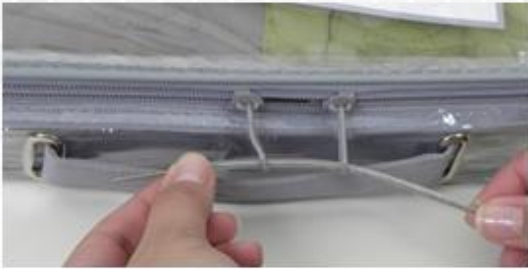


Lanyard Tag Placement

- Bedding- Long Lanyard



Insert Pin through back of tag and pull Lanyard until metal end cap is completely into secured.



Place the Pin through **BOTH** of the zipper holes



Insert Pin into Lanyard Tag opening.

- Handbags - Short Lanyard



Insert Pin through back of tag and pull Lanyard until metal end cap is completely into secured.



Place the Lanyard Tag close to the price ticket AND through a non removable portion of the Handbag.



Insert Pin into Lanyard Tag opening.

- Luggage – Long Lanyard



Insert Pin through back of tag and pull Lanyard until metal end cap is completely into secured.



Insert Pin into Lanyard Tag opening.

Place the Pin through luggage handle (Top of luggage)





Ordering Recycled EAS Lanyard Tags

Kohl's EAS Ordering Website Instructions

Registration:

Jenny Shen – Jenny.Shen@pactgroup.com

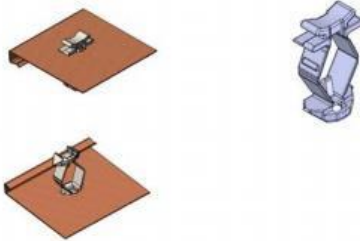
Kohl's will be covering the costs of the tag and freight. All shipments will be delivered DDU (Delivery Duties Unpaid). It is the responsibility of the vendor to cover import duties, taxes, etc. (if applicable).

Vendors are liable to provide accurate and correct information within the ordering website. Kohl's reserves the right to charge back vendors for the incorrect tags being ordered at cost of tags plus handling and administrative costs incurred.

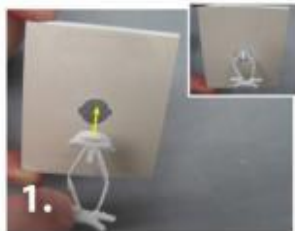
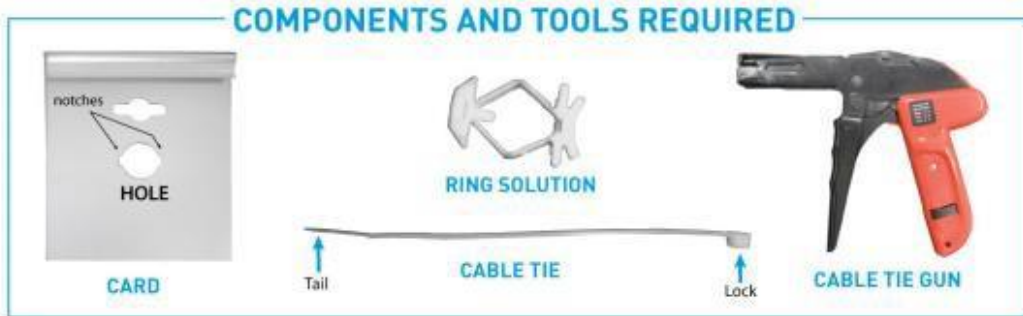
Fashion and Sterling Ring Cards

- All fashion and sterling ring card vendors are to order all ring cards through A&H
- Ring card orders will include the new security solution. This solution cannot be ordered independently to be used with another vendor's ring card
- Vendors will be open to chargebacks for ordering ring cards from other suppliers
- Contact Information:
 - Vendors can also log into www.aandhusa.com for training videos on the application process of this solution. Instructional videos are located under the product tab
 - Each card will include: the 1 piece ring solution and 1 zip tie

KOHL'S 1 PIECE RING SOLUTION



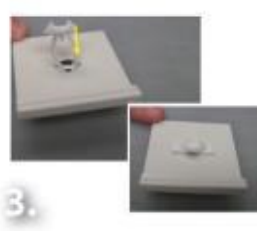
Locking Ring Card Instructions (From A&H Mfg. Co)



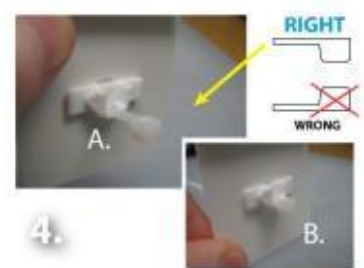
1. Insert one piece ring solution; with smaller end first, through the front of the ring card.



2. Pull ring solution flush to front face of card.



3. Squeeze together until the ring solution snaps close.



4. From back of card thread tail of cable tie through bottom slot (A), and pull to very end as shown(B).



5. Add ring to cable tie on front of card.



6. Thread tail end of cable tie through top slot.



7. Pull completely to end - while guiding ring to stand in upright position.



8. Feed cable tie tail through lock as shown.



9. Pull by hand to remove all slack.



10. Insert tail of cable tie into cable tie gun and pull trigger. Repeat until ring is tightly fastened. Gun will cut off tail automatically.



Finished BACK



Finished FRONT

EAS Source Tagging - MHz Tag Requirements

- Kohl's has worked with our EAS (Electronic Article Surveillance) suppliers to develop a type of security tag for the express purpose of attaching it at the source of production
- Kohl's has found that vendors who attach EAS soft tags at the production facility are more efficient than the application process at store level
- Moreover, the application at the production facility will ultimately result in better merchandise presentation, improved speed of goods to the sales floor, reduced inventory shortage, and better in-stock positioning

Kohl's asks that the following targeted merchandise receive an EAS Label

Targeted Merchandise

Targeted merchandise is as follows and has been selected based on theft trends and inventory shortage rates.

- Jewelry
 - All Open Sell Jewelry

Tag Placement

- EAS Labels should be placed on the back side of the jewelry card

Jewelry EAS Label w/variable source data (required with Jewelry Items)



Ordering EAS Labels through All Tag®

- All Factories/Vendors ordering EAS Labels must place orders by using the below contact.

Registration Process

- Website: <https://all-tag.com/>
- All-Tag contact for EAS label questions or concerns:
Catherine Berry
All-Tag Security
1155 Broken Sound Pkwy Unit E
Boca Raton, Florida USA 33487
Email: Cathie@all-tag.com
Office: 888.998.2299 x 25 Toll Free in U.S. and Canada
Direct Phone: 561-702-0484

Part Number

- Label: 23x44 8PW – 2k – Logo label
(Jewelry) 2000/roll – 20,000/box
- Price: is \$0.0249/label or \$24.90/1000 labels
- F.O.B. Florida and HK

Additional Ordering Information

- Vendors will cover the cost of the EAS labels
- Label vendor can provide RF Label Certification