



TRANSPLACE
The 3PL & Technology Company

Transplace

System Requirements 2015



Browsers Supported by Transplace And Minimum System Requirements

Browsers Supported by Transplace:

1. The Transplace suite of web applications can run on any computer with an Internet connection and supported browser.

BROWSER	VERSION
Microsoft Internet Explorer	Current and last prior version
Mozilla Firefox	Current version
Google Chrome	Current version

Minimum System Requirements

1. Pentium 4 or Pentium Dual-Core
2. 1 GB RAM
3. Windows XP, Vista or 7
4. Min screen resolution of 1024x768

The desktop client is deployed remotely, so there are no explicit requirements on the hard drive space available for install.

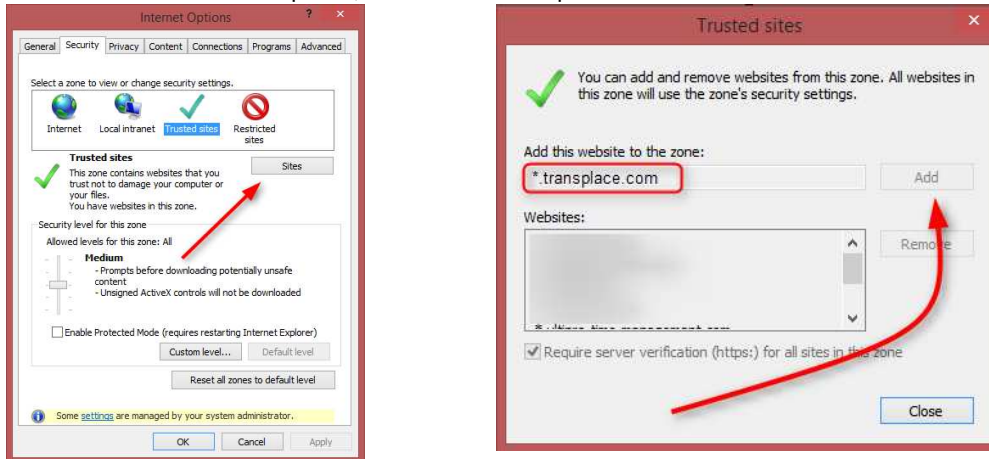
Java Requirements

The Transplace OMS 2.0 no longer requires JAVA.

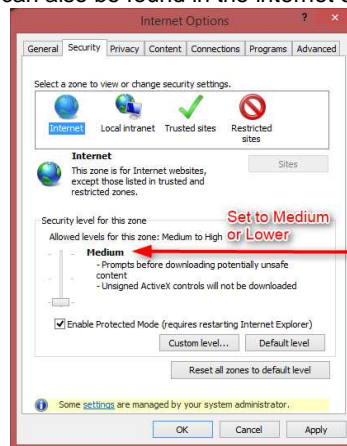
Default Browser Setting Recommendations

The following settings are recommended for the Transplace website (www.transplace.com) to execute properly and allow special functions associated with TMS applications to function as intended. There are three browser settings that need to be made:

- 1. Add “*.transplace.com” to the “Trusted Sites” section of the browser:**
This can be found in the internet options, make sure “*.transplace.com” is in the website area show below.



- 2. Ensure that the Trusted Security Zone is set to “Medium” or lower.**
This can also be found in the internet options menu.



- 3. Popups must be enabled for all Transplace.com sites:**
This can also be found in the internet options menu > Privacy > Settings

