

KOHL'S

Label Application

Execution Standards

November 2022



GSPS

Technical Design

Why are we here?



At Style Hand Off: (correct label selected)

- **Production** selects label choice and adds codes to BOM
- **KTD** confirms label based on garment construction
 - Placement follows [On-Garment Marketing doc](#)
- **Vendors** reference [On-Garment Marketing doc](#) for Counter Sample placement

ASHO: (correct label confirmed)

- **KTD** reconfirms label based on garment construction, post Cost & Counter changes
- Note: Production may need to update code in BOM

At 1st Fit: (proper label application confirmed)

- **KTD** reviews and provides feedback on Label application and execution.
- Note: If sample is approved but label application is not, CTD submits visual for virtual approval for KTD approval prior to PP submit

At Fit Approval: (proper label application is captured in the TP)

- **CTD** uploads [Label Approval](#) page doc into Attachments page of the TP

At PP Approval: (proper label application is verified)

- **CTD** verifies proper label application

At Pre-Production Meeting: (transparency before production)

- Label Approval page is reviewed for production expectations

During Production: (proper application is executed)

- Label Approval page is placed at operators station and QA checkpoint

Post Production/QA/Final Random Audit: (proper application is validated)

- Label Approval page is give to auditors

Label Approval

TOP APPLIED LABELS (Endfold, Patch)

- Label should lay smooth/flat
- No wavy edges
- Label set with 1/16" SN/LS - Backstitch @ start & stop for 3-4 stitches
- Label SPI = 8-10
- Thread
 - Needle: DTM to Label
 - Bobbin: DTM to shell fabric
 - No Monofilament/clear thread
- NO Thread nests or untrimmed threads on exterior garment

INSERT LABELS (Loop, Miter)

- Label should lay smooth/flat
- No wavy edges
- Label is secured in garment construction
- Thread
 - No Monofilament/clear thread
- NO Thread nests or untrimmed threads on exterior garment

Heat Transfer (Heat Seal)

- Label text must be visually straight not slanted on the garment
- Print must not be visible from garment exterior
- Heat transfer process must not leave color shading or permanent mark on garment exterior
- Heat seal label must be tested on each fabrication/wash/color for durability according to [Kohl's Appearance Evaluation Requirements Procedures](#)

INTERIOR IMAGE

EXTERIOR IMAGE

TEMPLATE

Label Approval

TOP APPLIED LABELS (Endfold, Patch)

- Label should lay smooth/flat
- No wavy edges
- Label set with 1/16" SN/LS - Backstitch @ start & stop for 3-4 stitches
- Label SPI = 8-10
- Thread
 - Needle: DTM to Label
 - Bobbin: DTM to shell fabric
 - No Monofilament/clear thread
- NO Thread nests or untrimmed threads on exterior garment





EXAMPLE



KOHL'S

Label Application Requirement in OnePLM

- Label Application Requirement page is uploaded into OnePLM Attachments page

Overview	Design Intent	Constructions	Instructions	POM	Samples	BOM	Attachments	Indicators	Events	>>
<input type="checkbox"/> Sort	Attachment No	Attachment Type	Description	Attached By	Date Attached					
<input type="checkbox"/>	4	IMG8	--Select--	 L R VER	LABEL APPLICATION REQUIREMENT		2022-10-26 10:02:32			
<input type="checkbox"/>			--Select--	 C						



Refer to [On Garment Apparel Packaging](#) on K-Link for general label placement & application per apparel category.

Key Requirements:

- Label should lay smooth/flat
- No wavy edges
- Label is secured in garment construction
- Label SPI follows garment construction
- Thread
 - No Monofilament/clear thread
- No thread nests or untrimmed threads on exterior garment

LOOP LABEL WITH SIZE LABEL

-
- Entire top edge must be caught in seam
 - Both layers of label must align
 - Label text must be visually straight not slanted on the garment

Knit Tops - Loop Label

Correct



- Label lays flat
- Label edges are not wavy
- Label inserted evenly
- Label placement is per On-Garment guide
- Brand is visible

Incorrect



- Incorrect label for fabrication & neckline finish
- Endfold label should have been used

Woven Tops - Loop Label

Correct



- Label lays flat
- Label edges are not wavy
- Label inserted evenly
- Label placement is per On-Garment guide
- Brand is visible

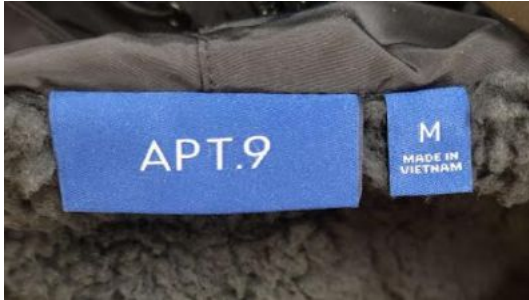
Incorrect



- Loop label distorted by shirring and should be set flat

Outerwear/Jackets Tops - Loop Label

Correct



- Label lays flat
- Label placement is per On-Garment guide
- Brand is visible
- Label edges are not wavy

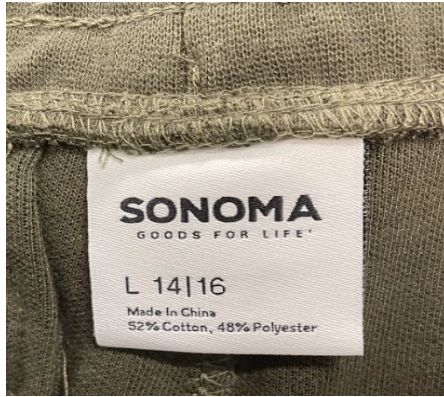
Incorrect



- Size label should have been placed next to loop label

Knit Bottoms - Loop Label

Correct



Incorrect

- Label is tilted,
not centered
and too low.



- Size label
should be set to
the side of the
main label



- Label lays flat
- Label edges are not wavy
- Label placement is per On-Garment guide
- Brand is visible

Woven Bottoms - Loop Label

Correct Execution



- Label lays flat
- Label edges are not wavy
- Label placement is per On-Garment guide
- Brand is visible

Incorrect Execution

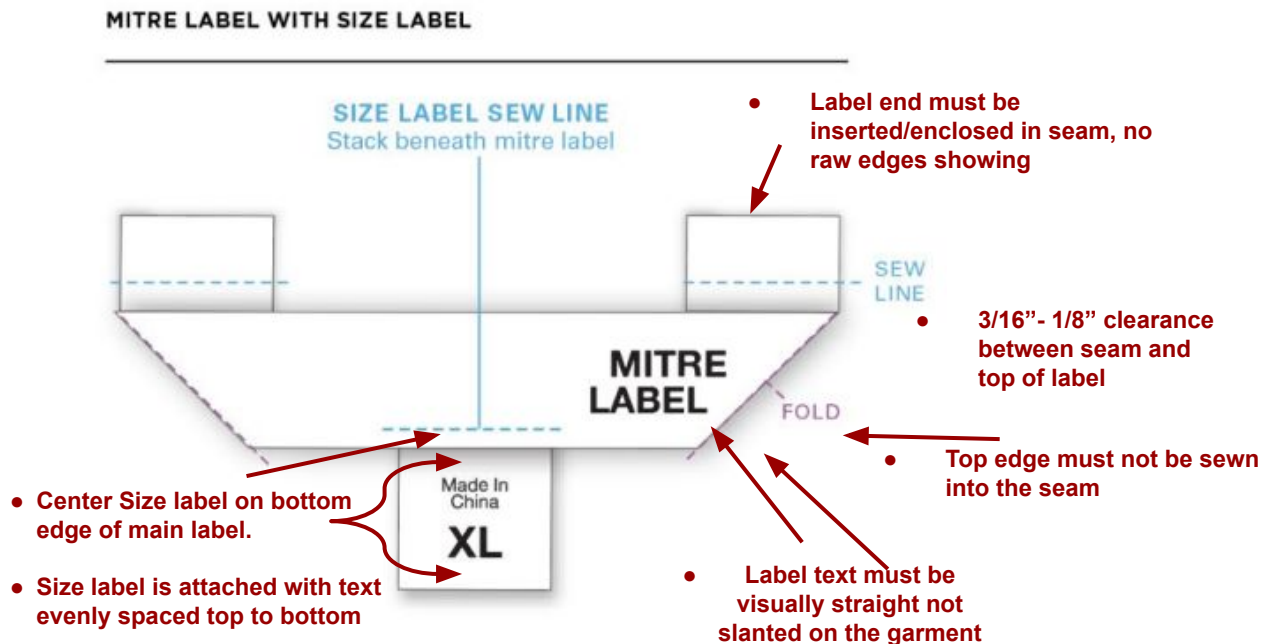
- Label is tilted and wording is cut off.



- Label is not centered at seam

Key Requirements:

- Label should lay smooth/flat
- No wavy edges
- Label is secured in garment construction
- Size Label set with 1/16" SN/LS
- Backstitch @ start & stop for 3-4 stitches
- Label SPI = 8-10
- Thread
 - Needle: DTM to Label
 - Bobbin: DTM to Label
 - No Monofilament/clear thread
- No thread nests or untrimmed threads



Knit Tops - Mitre Label

Correct



Incorrect

- Label edge must be parallel to seam
- Top edge of label caught in coverstitch
- Size label sewing extends across entire bottom edge of label
- Endfold label would have been better label selection



- Too much space between bottom edge of mitre label and size on size label
- Endfold label would have been better label selection



- Label lays flat
- Label edges are not wavy
- Label inserted evenly
- Label placement is per On-Garment guide
- Brand is visible

- Top edge of label must be caught in neck seam, with no raw edges showing
- Size label sewing extends across entire bottom edge of label



- Top and bottom of label edges are wavy
- Size label setting is not parallel to the miter label



Knit Tops - Mitre Label

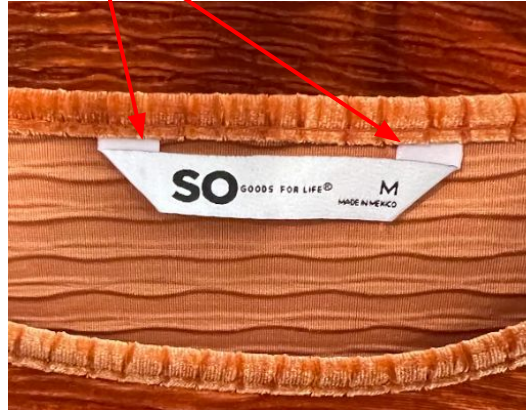
Correct



- Label lays flat
- Label edges are not wavy
- Label inserted evenly
- Label placement is per On-Garment guide
- Brand is visible

Incorrect

- Label distance from neck seam is not even from side to side



- Loop label or end fold label would have been better label selection



Woven Tops - Mitre Label

Correct



Incorrect

Top and bottom of the label edges are wavy



- Top of mitre is too far from the seam
- Loop or Endfold label would have been better label selection



- Stitching for size label extends too far beyond edges of size label



- Label lays flat
- Label edges are not wavy
- Label inserted evenly
- Label placement is per On-Garment guide
- Brand is visible

Bottoms - Mitre Label

Correct

**No Mitred
labels should
be used in
Bottoms**

**Endfold or
Loop label
should be
used instead**

- Incorrect label choice.
- Label risk coming out / raw edge.

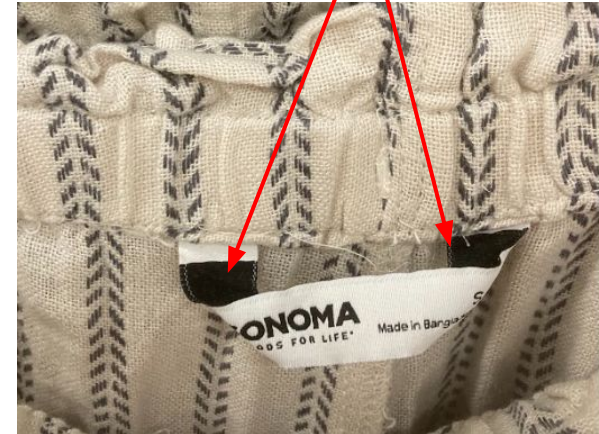
- Incorrect label choice.
- Label is not flat, distorted in sewing



Incorrect



- Incorrect label choice.
- Label is not flat, distorted in sewing.



Sweaters - Mitre Label

Correct

**No Mitred
labels
on Sweaters**

**Endfold
labels should
be used**

- Incorrect label selection.
- Endfold label should be used

Incorrect



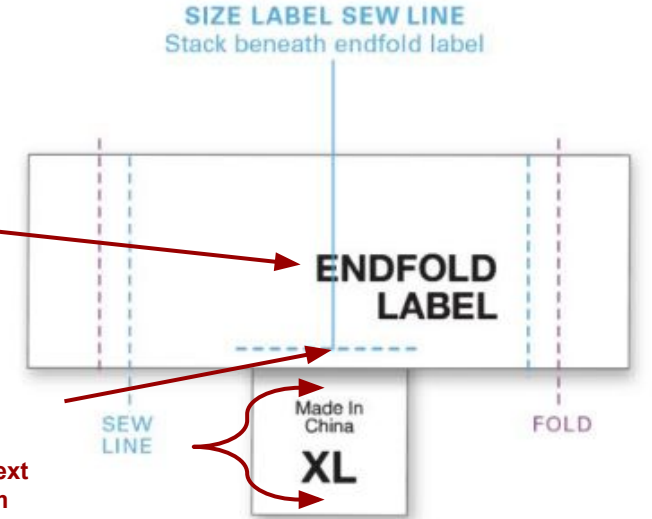
Endfold Labels (2-side sew)

Key Requirements:

- Label should lay smooth/flat
- No wavy edges
- Label set with 1/16" SN/LS
- Backstitch @ start & stop for 3-4 stitches
- Label SPI = 8-10
- Thread
 - Needle: DTM to Label
 - Bobbin: DTM to shell fabric
 - No Monofilament/clear thread
- NO Thread nests or untrimmed threads on exterior garment

ENDFOLD LABEL WITH SIZE LABEL

- Label text must be visually straight not slanted on the garment
- Center Size label on bottom edge of main label.
- Size label is attached with text evenly spaced top to bottom



Knit Tops - End Fold

Correct



- Stitching is clean and 2-side sew
- Label lays flat
- Label edges are not wavy
- Label placement is per On-Garment guide
- Brand is visible

Incorrect

- Endfold label incorrectly attached to garment. Label should be attached at side edges, not at the top edge of label
- Size label incorrectly attached to Endfold label. Size label should be attached at bottom edge of Endfold label not at top edge of label



- Incorrect label
- Heat seal label should have been used



- No thread nests or untrimmed threads allowed on exterior garment at start/stop of sewing



- Broken stitches
- Size label sewing extends across entire bottom edge of label



Woven Tops - End Fold

Correct



- Stitching is clean and 2-side sew
- Label lays flat
- Label edges are not wavy
- Label placement is per On-Garment guide
- Brand is visible

Incorrect

- Wavy edges
- Label should be a 2 side sew (all 4 sides are sewn)



- Label should be set flat for Brand to be easily visible
- Consider alternate label and/or placement

- Incorrect label
- Loop label, miter label or heat seal should be used



Woven Tops - End Fold

Correct



- Stitching is clean and 2-side sew
- Label lays flat
- Label edges are not wavy
- Label placement is per On-Garment guide
- Brand is visible

Incorrect

- Incorrect label used. Should be a loop label.
- Or label should be set flat on body



- Endfold label incorrectly attached to garment. Label should be attached at side edges, not at the top edge of label
- Size label incorrectly attached to Endfold label. Size label should be attached at bottom edge of Endfold label not at top edge of label



- Endfold label incorrectly attached to garment. Label should be attached at side edges, not at the top edge
- Label should be set flat for Brand to be easily visible



- Label placement incorrect. Label should be attached on body not collar
- Size label sewing extends across entire bottom edge of label



Woven Tops - End Fold

Correct



- Stitching is clean and 2-side sew
- Label lays flat
- Label edges are not wavy
- Label placement is per On-Garment guide
- Brand is visible

Incorrect



- Label should be set flat for Brand to be easily visible

Sweaters - End Fold

Correct



- Stitching is clean and 2-side sew
- Label lays flat
- Label Edges are not wavy
- Label placement is per On-Garment guide
- Brand is visible

Incorrect

- Label applied with too much tension



- Label should be set flat for Brand to be easily visible



- Label not applied straight on the garment



- Stitch should not extend onto the garment



Knit Bottoms - End Fold Label

Correct



- Stitching is clean and 2-side sew
- Label lays flat
- Label edges are not wavy
- Label placement is per On-Garment guide
- Brand is visible

Incorrect

- Poor stitching workmanship & low SPI.



- Label should be set flat for Brand to be easily visible
- Endfold label stitching not parallel to edges of label
- Size label sewing extends across entire bottom edge of label



- Incorrect label
- Loop label should have been used

Woven Bottoms - End Fold

Correct



- Stitching is clean and 2-side sew
- Label lays flat
- Label edges are not wavy
- Label placement is per On-Garment guide
- Brand is visible

Last Publish Date: November 2022

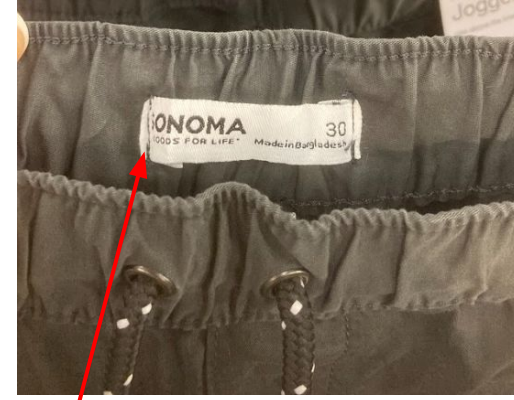
- Blue tint from wash
- Messy stitching



- Size label is not set evenly and is not centered



Incorrect



- Label should be set flat for Brand to be easily visible



Kohl's company confidential, do not reproduce, no distribution

Woven Bottoms - End Fold Label

Correct



- Stitching is uneven
- Size label sewing extends across entire bottom edge of label



Incorrect

- Poor quality label



- Size label should be stitched to main label (not into waistband)

- Label should be set flat for Brand to be easily visible



- Stitching is clean and 2-side sew
- Label lays flat
- Label edges are not wavy
- Label placement is per On-Garment guide
- Brand is visible

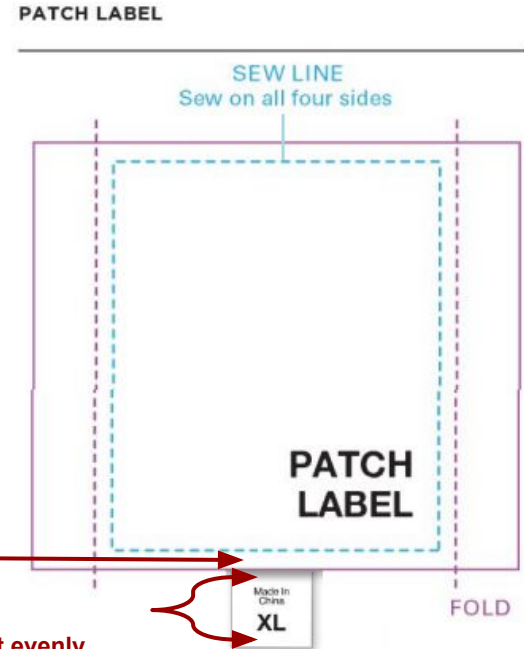
Patch Labels (4- side sew)

Key Requirements:

- Label should lay smooth/flat
- No wavy edges
- Label set with 1/16" SN/LS
- Backstitch @ start & stop for 3-4 stitches
- Label SPI = 8-10
- Thread
 - Needle: DTM to Label
 - Bobbin: DTM to shell fabric
 - No Monofilament/clear thread
- NO Thread nests or untrimmed threads on exterior garment

- Label text must be visually straight not slanted on the garment

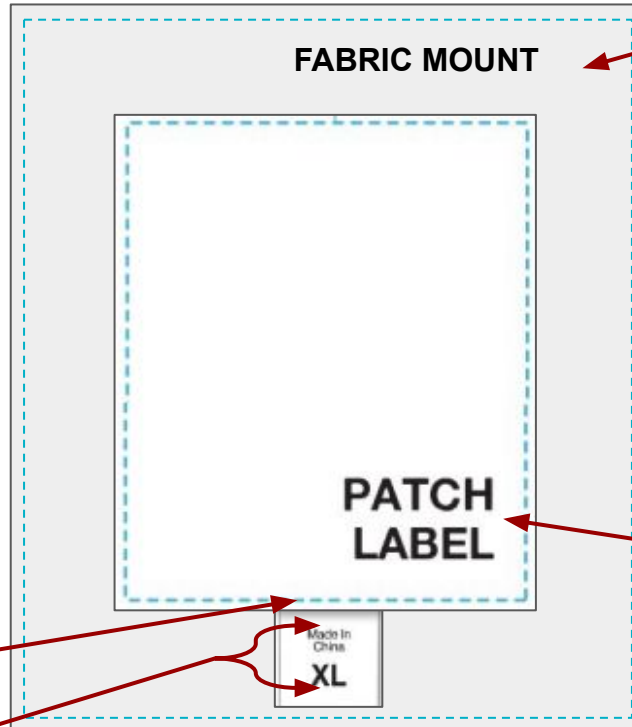
- Center Size label on bottom edge of main label.
- Size label is attached with text evenly spaced top to bottom



Patch Labels with Mount

Key Requirements:

- Fabric Mount & Label should lay smooth/flat
- No wavy edges
- Fabric Mount & Label set with 1/16" SN/LS
- Backstitch @ start & stop for 3-4 stitches
- Label SPI = 8-10
- Thread
 - Needle: DTM to Label
 - Bobbin: DTM to shell fabric
 - No Monofilament/clear thread
- No thread nests or untrimmed threads on exterior garment
- Center Size label on bottom edge of main label
- Size label is attached with text evenly spaced top to bottom



- Fabric Mount should be same Fabric Grain direction as per body panel it's sewn to
- All four sides of fabric must be folded under and stitched along all 4 sides (no raw edges)
- Mount must be straight, not slanted
- Label must be centered on Mount
- Mount is 1/2" bigger around the edge
- Label text must be visually straight not slanted on the garment

Outerwear Tops - Patch Label

Correct



- Stitching is clean and 4-side sew
- Label lays flat
- Label placement is per On-Garment guide
- Brand is visible

Incorrect

- Turn back edges of fabric mount are exposed at outer edges



- Patch label incorrectly attached to mount patch. Label should be attached on all 4 sides

- Patch label & fabric mount are not flat & not evenly shaped at edges

- Fabric mount is cut on bias, should be cut on grain



- Patch label incorrectly attached to garment.
- Label should be attached on all 4 sides, not at 2 sides only



- Label attach SPI count is too small
- Fabric mount edges are not straight
- Turn back edges of fabric mount are exposed at outer edges



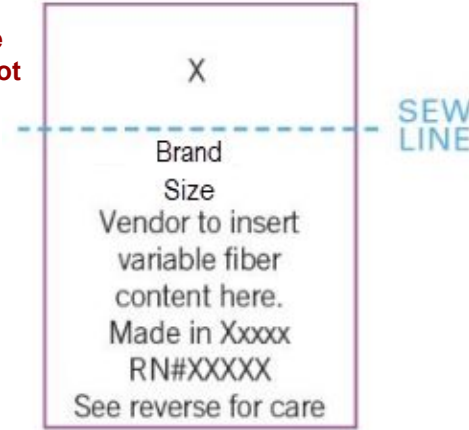
Printed Tear Away Labels

Key Requirements:

- Label should lay smooth/flat
- No wavy edges
- Label is secured in garment construction
- Label SPI follows garment construction
 - Thread
 - No Monofilament/clear thread
- No thread nests or untrimmed threads on exterior garment

TEAR AWAY INTEGRATED BRAND, SIZE CARE/CONTENT LABELS

Label text must be
visually straight not
slanted on the
garment

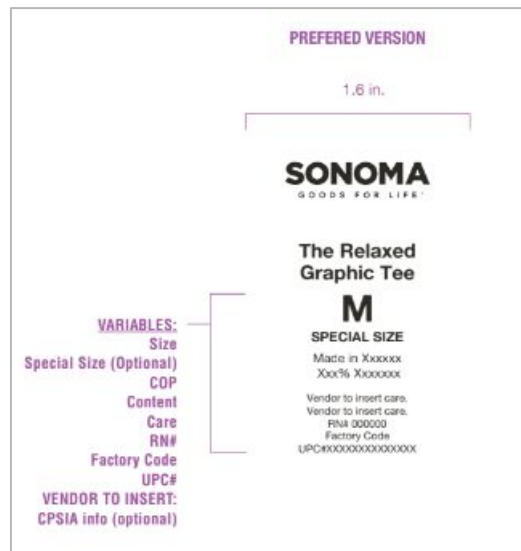


Heat Transfer/Seal Labels

Key Requirements:

- Label text must be visually straight not slanted on the garment
- Print must not be visible from garment exterior
- Heat transfer process must not leave color shading or permanent mark on garment exterior
- Heat transfer label must be tested on each fabrication/wash/color for durability according to [Kohl's Appearance Evaluation Requirements](#)

Procedures



Heat Transfer/Seal Labels

Correct



Incorrect



Color is
bleeding thru

Heat Transfer/Seal Labels

Heat Transfer Process



Garment
Vendor sends
each fabric &
colorway to
label supplier

STEP 1



Label
supplier
performs
heat
transfer
testing

STEP 2



Label
supplier
determines
correct heat
transfer
quality

STEP 3



Garment
Vendor applies
heat transfer to
garments to
mitigate quality
concerns

STEP 4



Label supplier
proceeds with
bulk
production

STEP 5

Knit Tops - Heat Set Label

Correct

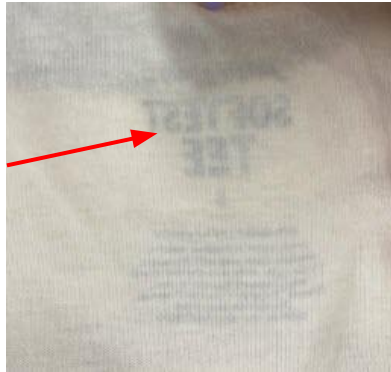


- Label is properly applied
- Label placement is per On-Garment guide
- Brand is visible

- Label is set too low



- Label is grinning through to the right side of the garment



Incorrect

- Label is causing puckering on the right side of the garment



- Brand is not visible
- Mitre label should have been used



Knit Tops - Heat Set Label

Correct



- Label is properly applied
- Label placement is per On-Garment guide
- Brand is visible

Incorrect



- Label is set off center



- Outline of heat transfer is visible



- Label color is blending in with the background
- Mitre label would have been better label selection

Knit Bottoms - Heat Set Label

Correct

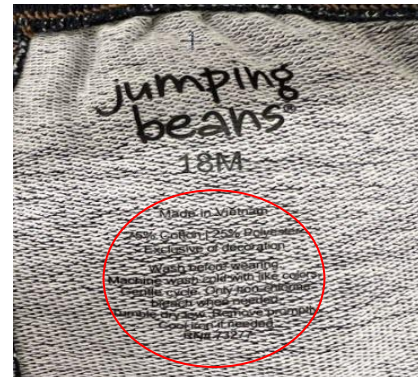


- Label is properly applied
- Label placement is per On-Garment guide
- Brand is visible

Incorrect



- Label is set too close to waistband



- Label is peeling off of garment



- Label placed inconsistently between two colorways



Woven Bottoms - Heat Set Label

Correct



- Label is properly applied
- Label placement is per On-Garment guide
- Brand is visible

Incorrect



- Heat Seal is peeling



- Heat Seal size and fit callout are not centered over the width of the waist band
- Logo should be centered over center back

VENDOR EXPECTATIONS:

- ❑ Follow On-Garment guide for label placement
- ❑ Include correct label, placement and execution in samples during development stage
- ❑ Be proactive if Label is not suitable for garment construction
- ❑ Upload Approved Label page into OnePLM
- ❑ Cover Label application during PP meeting
- ❑ Provide sewing operator with Label Approval page
- ❑ Inspect proper Label execution at DUPRO and Final Inspection

KOHL'S EXPECTATIONS:

- ❑ TD and Production collaborate at SHO to make sure that proper label is selected based on garment construction
- ❑ Confirm correct label at ASHO
- ❑ TD to provide feedback and approval on proper label applications during Development

Fit and PP Approved but not in production - SP23

- CTD is to send KTD Label Application Requirement page prior to uploading into OnePLM

In Development - SU/BTS23

- KTD to start reviewing on garment when fit/PP sample is received
 - CTD uploads Label Application Approval page into OnePLM once approval is given by KTD

New Development - starting FA/HO23

- Follows above process from the start

NOTE:

Non-CTD supporters product - KTD creates and uploads Label Application Approval page into OnePLM