

PLAID/STRIPE MATCHING GUIDE

WOVEN TOP'S/DRESSES

- CF Opg/CB Seam-----Horizontal Match
- CF Non-Bias Placket-----Vertical Stripe cntrd n CF plkt; Non engineered
- Collar -----Balanced
- Sideseam-----Matching not required
- Sleeves-----Horizontally paired
- Sleeve Placket-----No matching or pairing
- Pockets/Flaps-----Vertical and horizontal match to body
- Welt Pockets-----Paired
- Sleeve Cuffs-----Horizontally paired
- Back Yoke-----No matching or balancing required
- Split Back Yoke-----Horizontal & vertical match at CB seam
- Panel/Princess Seams-----Horizontal match at sweep/hem
- 2 Pc Hood-----Horizontal match
- 3 Pc Hood-----Horizontal match, no matching req for cntr panel
- Buffalo Check (2 Color)----Continuous repeat
- Bias Cut----All bias components w/in a garment cut on same degree of bias

BOTTOM'S

- CF/CB Rise-----Horizontal match
- Sideseam-----Matching not required
- Welt Pockets-----Horizontally paired
- On-Grain Pockets/Facing/Flaps-----Horizontally paired, not match to body
- Split Back WB-----Horizontal match at CB seam
- Back Yoke-----Horizontal match at CB seam
- Bias Cut-----All bias components w/in a garment cut on same degree of bias

KNIT'S

- CF Opg/CB Opg-----Horizontal match stripes 1/4" or wider
- CF Placket (Non-bias)-----Match unless otherwise specified
- Collar -----Balanced
- Sideseam (Top's)-----Horizontal match - AH/Waist midpoint to hem
- Underarm (Top's)-----Horizontal match - AH/Elbow midpoint to hem
- Outseam (Bottom's)-----Horizontal match - Low hip to hem
- Inseams (Bottom's)-----Horizontal match - Crotch/knee to midpoint hem
- Sleeves-----Horizontally paired
- Sleeve to Body-----Horizontal match -Mid-AH at top of stripe
 - *Asymmetrical AH - Front only
 - *Symmetrical AH - Frt & Bk
- On-Grain Pockets/Flaps----Horizontal match to body
- Welt Pockets-----Horizontally paired
- Bias Pockets/Flaps/Yoke---Mirror
- Panel/Princess Seams-----Horizontal match at sweep hem
- Split Back Yoke-----Horizontal & vertical match at CB seam
- 2 Pc Hood-----Horizontal match
- 3 Pc Hood-----Horizontal match, no matching req for cntr panel

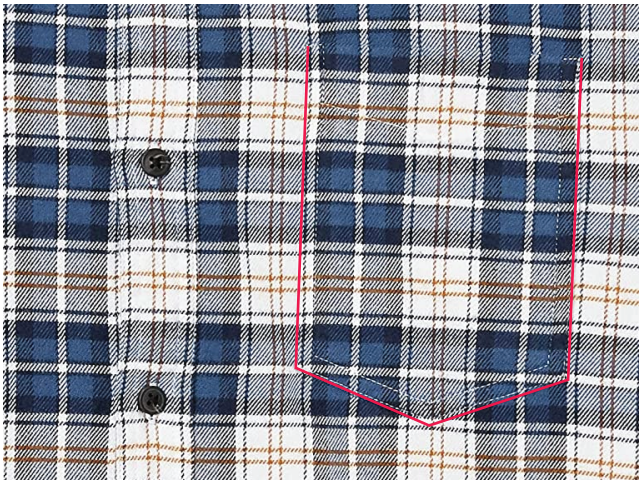
SWEATER'S

- All components must be vertically and horizontally matched for linked sweaters.

**Cut & Sew Sweater Knits - Follow Knit Standards

MATCH

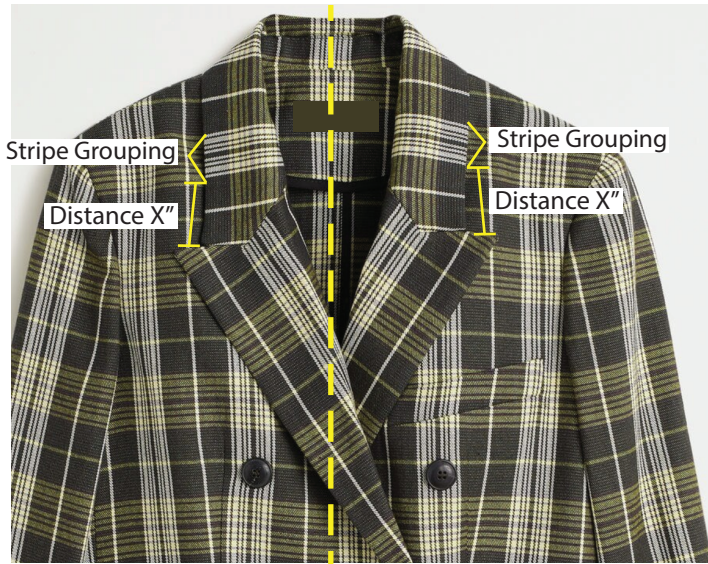
Vertical = Pocket
Horizontal = CF & Pocket



Horizontal = Rise seam



BALANCED



CONTINUOUS REPEAT



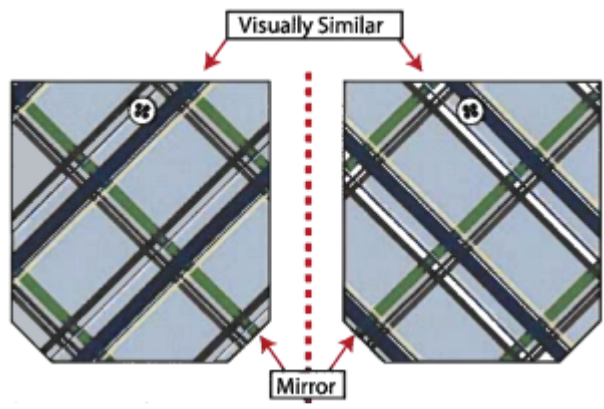
Balanced: Stripe grouping is even from side to side

MIRROR

EVEN & DIRECTIONAL

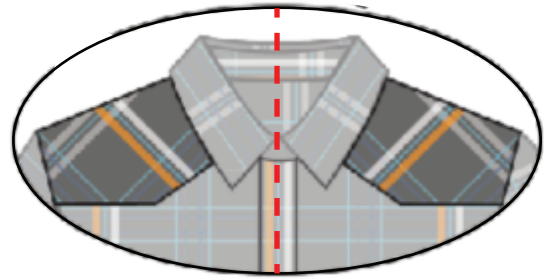


UNEVEN BIAS



EVEN BIAS

Pattern is reflected side to side



PAIR

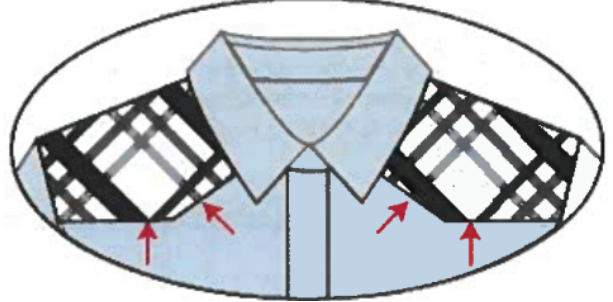
VERTICAL

Visually dominant stripe is centered in each pocket



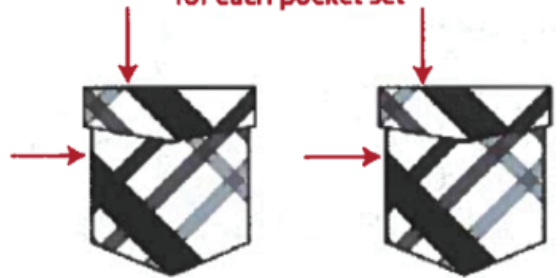
BIAS

Stripes are at the same location side to side



BIAS

Stripes are at the same location for each pocket set



Visually dominant stripe is centered in each leg panel



Mirror: Pattern reflected in opposite directions from a designated mirrorline
 Pair: Pattern is cut and sewn to appear visually similar between like components