

KOHL'S

Women's Regular Grading Schematics

January 2024



GSPS

Technical Design

*****Shared 3D files are for grading ONLY, not to be used as fit blocks**



Table of Contents Tops/Dresses

DRESSES

LS Shirt Dress	P.	<u>4-8</u>
Maxi Dress	P.	<u>9-12</u>

KNITS

Dolman Drop Shoulder	P.	<u>13-16</u>
LS Crew Tee	P.	<u>17-20</u>
LS Hoodie	P.	<u>21-25</u>
SS Crew Neck Tee	P.	<u>26-29</u>
SS Polo Shirt	P.	<u>30-34</u>
3/4 Sleeve Raglan	P.	<u>35-39</u>

WOVENS

Denim Jacket	P.	<u>39-45</u>
Woven Shirt	P.	<u>46-50</u>



Table of Contents Bottoms

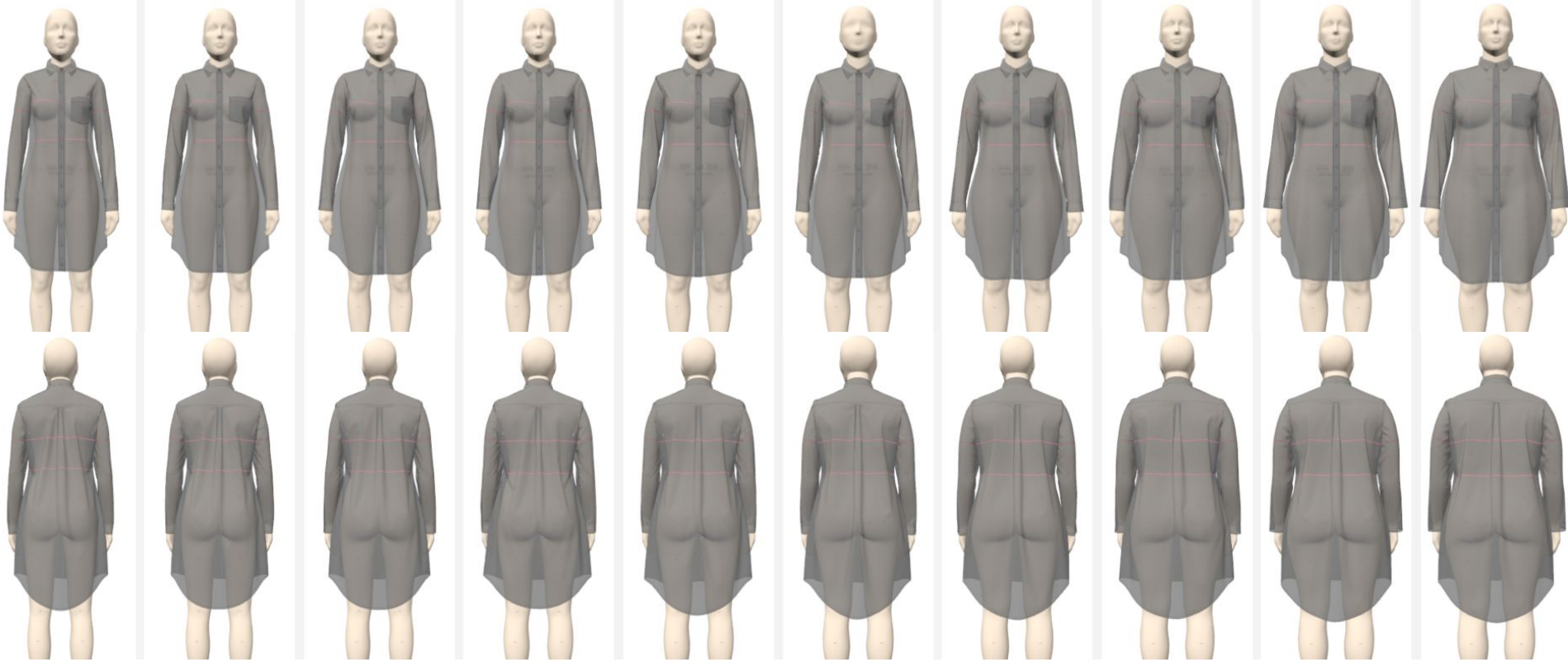
KNIT BOTTOMS

Knit Jogger.....	P. <u>51-54</u>
Knit Legging No Side Seam..	P. <u>55-58</u>
Knit Legging Flare.....	P. <u>59-62</u>

WOVEN BOTTOMS

Woven Denim Skinny.....	P. <u>63-66</u>
Woven Denim Short.....	P. <u>68-72</u>
Woven Denim Bermuda.....	P. <u>73-77</u>
Woven Pant w/Back Dart.....	P. <u>78-82</u>

Women's - LS Shirt Dress



M=8-10: XS(2)

S(4)

S(6)

M(8)

M(10)

L(12)

L(14)

XL(16)

XL(18)

XXL(20)

M=10-12: XS(2)

XS(4)

S(6)

S(8)

M(10)

M(12)

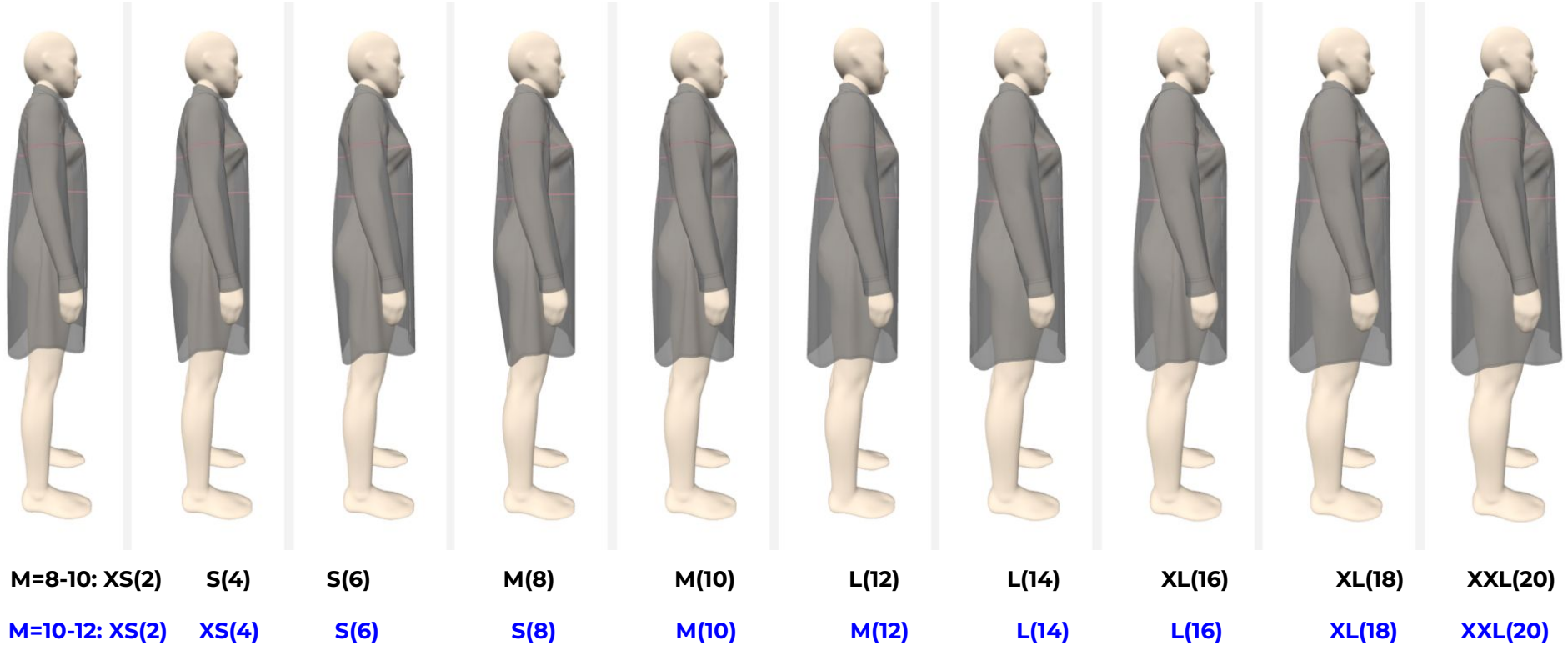
L(14)

L(16)

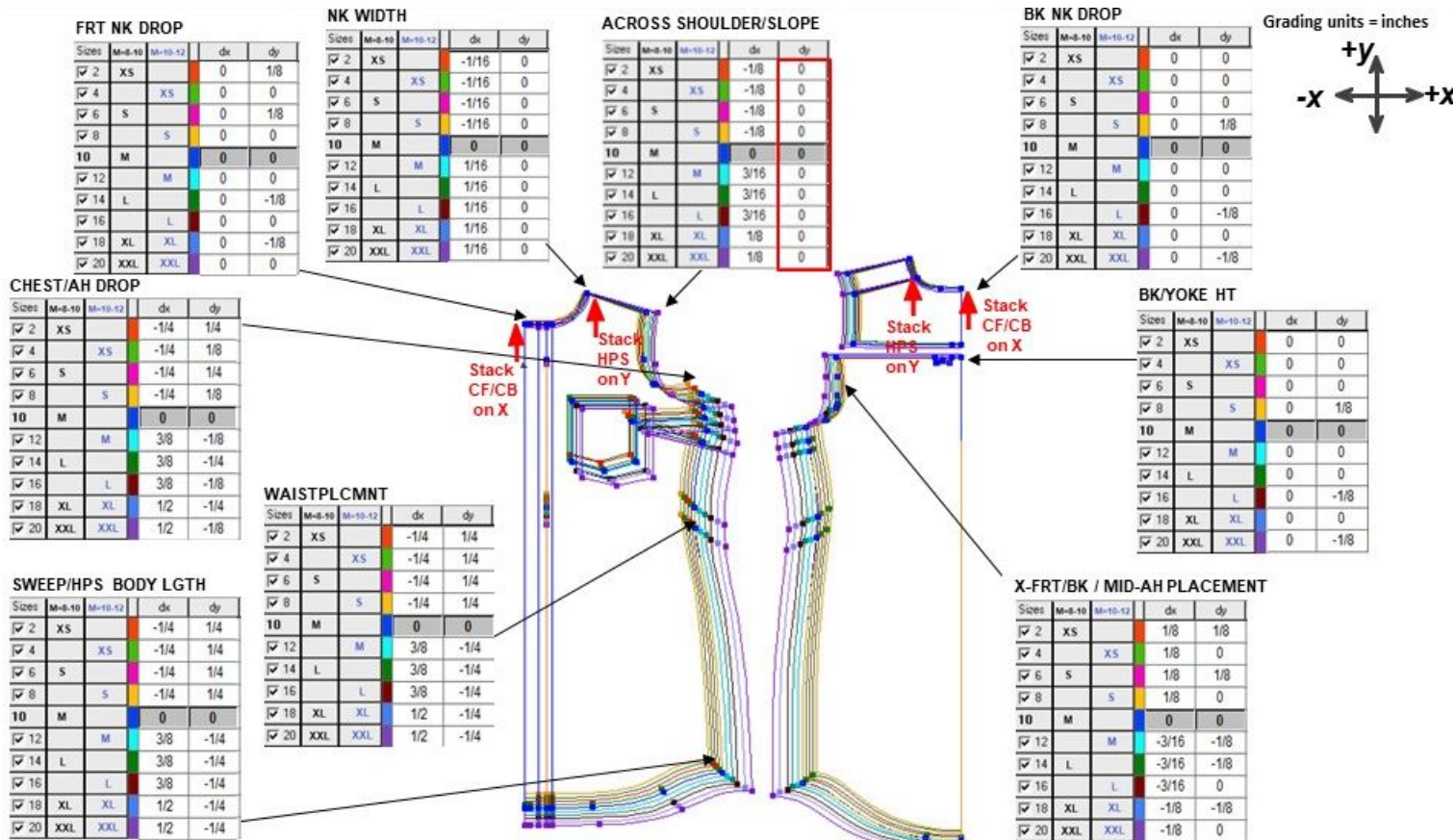
XL(18)

XXL(20)

Women's - LS Shirt Dress



Women's - LS Shirt Dress

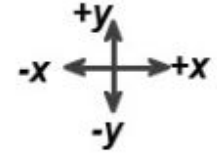


Last Update: 7/18/2022

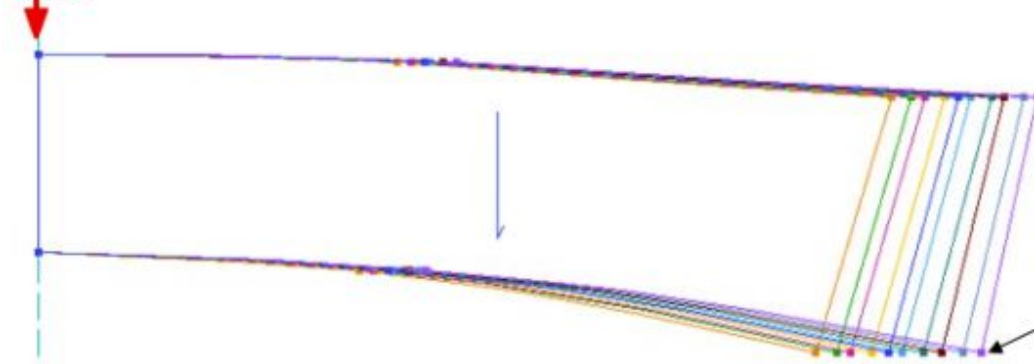
Confidential - Property of Kohl's Inc.

Women's - LS Shirt Dress

Grading units = inches



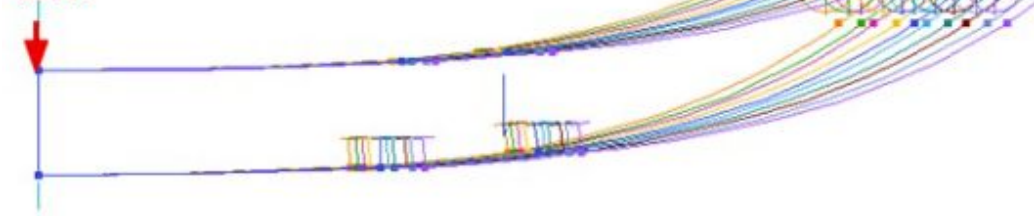
Stack CB
on X/Y



COLLAR TOP EDGE

Size	M-6-10	M-10-12	dx	dy
<input checked="" type="checkbox"/> 2	XS		-3/16	0
<input checked="" type="checkbox"/> 4		XS	-1/8	0
<input checked="" type="checkbox"/> 6	S		-3/16	0
<input checked="" type="checkbox"/> 8		S	-3/16	0
10	M		0	0
<input checked="" type="checkbox"/> 12		M	1/8	0
<input checked="" type="checkbox"/> 14	L		3/16	0
<input checked="" type="checkbox"/> 16		L	3/16	0
<input checked="" type="checkbox"/> 18	XL	XL	3/16	0
<input checked="" type="checkbox"/> 20	XXL	XXL	3/16	0

Stack CB
on X/Y



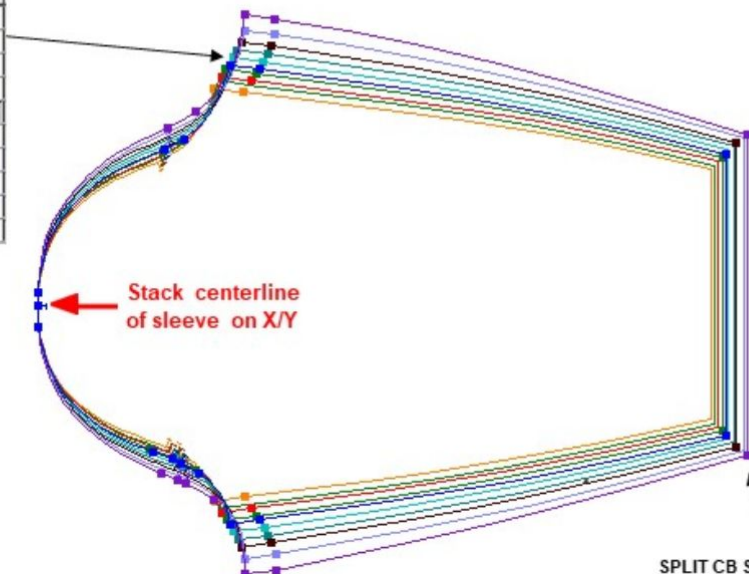
NECK OPENING

Size	M-6-10	M-10-12	dx	dy
<input checked="" type="checkbox"/> 2	XS		-3/16	0
<input checked="" type="checkbox"/> 4		XS	-1/8	0
<input checked="" type="checkbox"/> 6	S		-3/16	0
<input checked="" type="checkbox"/> 8		S	-3/16	0
10	M		0	0
<input checked="" type="checkbox"/> 12		M	1/8	0
<input checked="" type="checkbox"/> 14	L		3/16	0
<input checked="" type="checkbox"/> 16		L	3/16	0
<input checked="" type="checkbox"/> 18	XL	XL	3/16	0
<input checked="" type="checkbox"/> 20	XXL	XXL	3/16	0

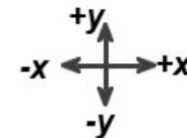
Women's - LS Shirt Dress

SLV CAP HT/SLV UPPER ARM

Size	M=8-10	M=10-12	dx	dy
<input checked="" type="checkbox"/> 2	XS		-1/8	-1/4
<input checked="" type="checkbox"/> 4		XS	-1/8	-1/8
<input checked="" type="checkbox"/> 6	S		-1/8	-1/4
<input checked="" type="checkbox"/> 8		S	-1/8	-1/8
10	M		0	0
<input checked="" type="checkbox"/> 12		M	1/8	1/4
<input checked="" type="checkbox"/> 14	L		1/8	1/4
<input checked="" type="checkbox"/> 16		L	1/8	1/4
<input checked="" type="checkbox"/> 18	XL	XL	1/8	3/8
<input checked="" type="checkbox"/> 20	XXL	XXL	0	1/2



Grading units = inches



SLV OPENING

Size	M=8-10	M=10-12	dx	dy
<input checked="" type="checkbox"/> 2	XS		0	1/8
<input checked="" type="checkbox"/> 4		XS	0	1/8
<input checked="" type="checkbox"/> 6	S		0	1/8
<input checked="" type="checkbox"/> 8		S	0	1/8
10	M		0	0
<input checked="" type="checkbox"/> 12		M	0	-1/8
<input checked="" type="checkbox"/> 14	L		0	-1/8
<input checked="" type="checkbox"/> 16		L	0	-1/8
<input checked="" type="checkbox"/> 18	XL	XL	0	-1/8
<input checked="" type="checkbox"/> 20	XXL	XXL	0	-1/8

SPLIT CB SLV LENGTH/SLV OPENING

Size	M=8-10	M=10-12	dx	dy
<input checked="" type="checkbox"/> 2	XS		-1/8	1/8
<input checked="" type="checkbox"/> 4		XS	-1/8	1/8
<input checked="" type="checkbox"/> 6	S		-1/8	1/8
<input checked="" type="checkbox"/> 8		S	-1/8	1/8
10	M		0	0
<input checked="" type="checkbox"/> 12		M	1/16	-1/8
<input checked="" type="checkbox"/> 14	L		3/16	-1/8
<input checked="" type="checkbox"/> 16		L	1/16	-1/8
<input checked="" type="checkbox"/> 18	XL	XL	1/4	-1/8
<input checked="" type="checkbox"/> 20	XXL	XXL	1/8	-1/8

Women's - Maxi Dress



M=8-10: XS(2)

S(4)

S(6)

M(8)

M(10)

L(12)

L(14)

XL(16)

XL(18)

XXL(20)

M=10-12: XS(2)

XS(4)

S(6)

S(8)

M(10)

M(12)

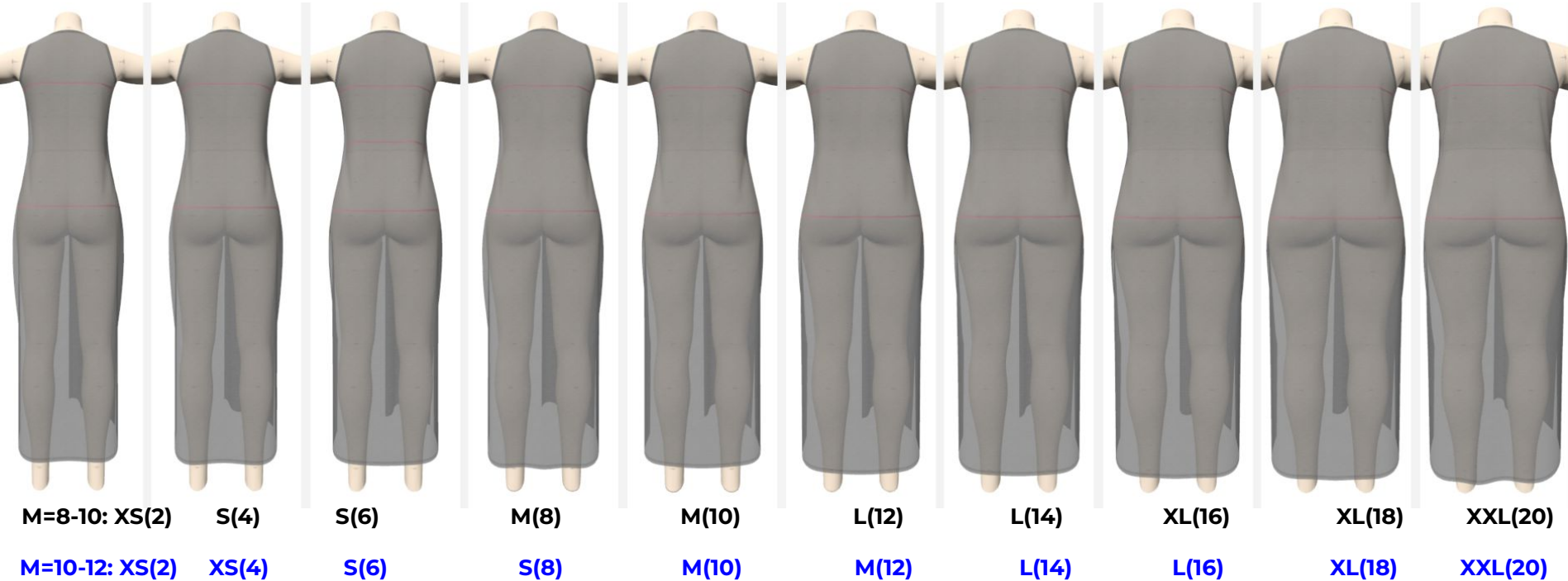
L(14)

L(16)

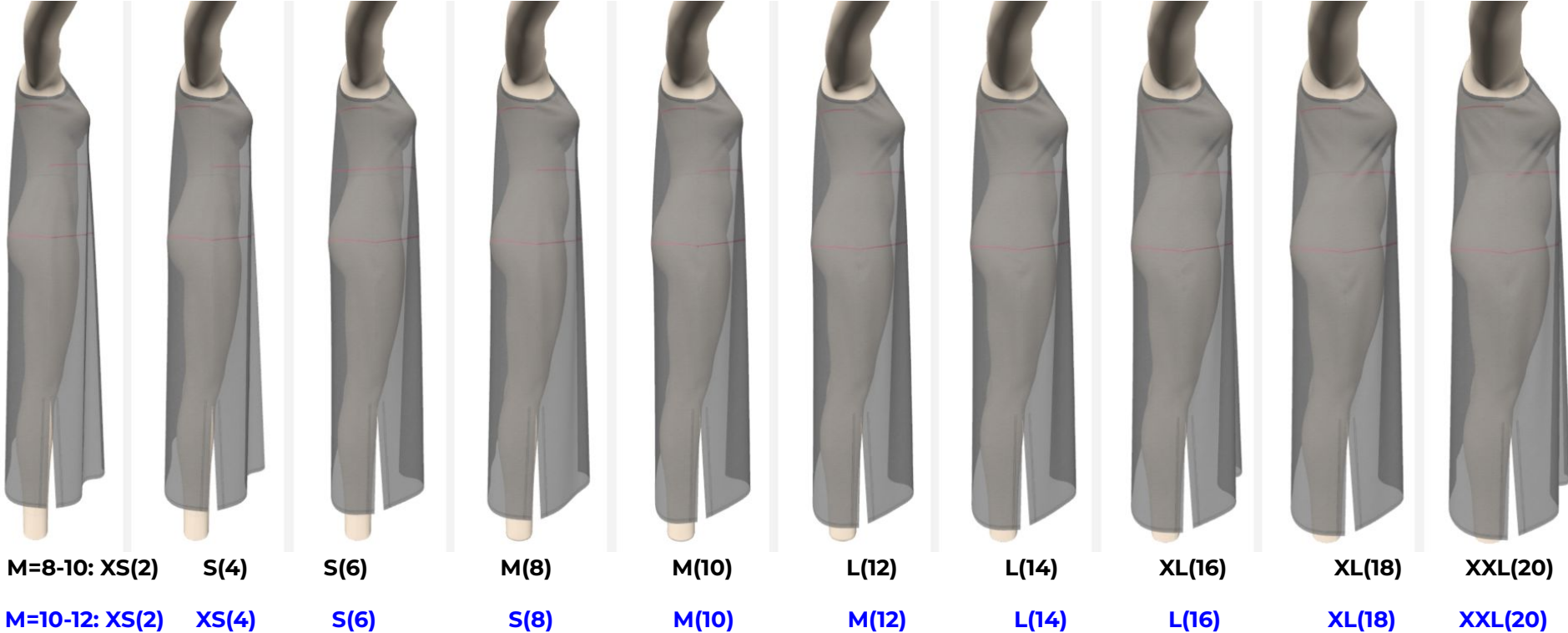
XL(18)

XXL(20)

Women's - Maxi Dress



Women's - Maxi Dress



Women's - Maxi Dress

ACROSS SHOULDER/SLOPE

Sizes	M-8-10	M-10-12	dx	dy
✓ 2	XS		-1/8	0
✓ 4		XS	-1/8	0
✓ 6	S		-1/8	0
✓ 8		S	-1/8	0
10	M		0	0
✓ 12		M	3/16	-1/16
✓ 14	L		3/16	-1/16
✓ 16		L	3/16	-1/16
✓ 18	XL	XL	1/8	0
✓ 20	XXL	XXL	1/8	0

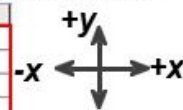
FRT NK DROP

Sizes	M-8-10	M-10-12	dx	dy
✓ 2	XS		0	1/8
✓ 4		XS	0	0
✓ 6	S		0	1/8
✓ 8		S	0	0
10	M		0	0
✓ 12		M	0	0
✓ 14	L		0	-1/8
✓ 16		L	0	0
✓ 18	XL	XL	0	-1/8
✓ 20	XXL	XXL	0	0

BK NK DROP

Sizes	M-8-10	M-10-12	dx	dy
✓ 2	XS		0	0
✓ 4		XS	0	0
✓ 6	S		0	0
✓ 8		S	0	1/8
10	M		0	0
✓ 12		M	0	0
✓ 14	L		0	0
✓ 16		L	0	-1/8
✓ 18	XL	XL	0	0
✓ 20	XXL	XXL	0	-1/8

Grading units = inches



CHEST/AH DROP

Sizes	M-8-10	M-10-12	dx	dy
✓ 2	XS		-1/4	1/4
✓ 4		XS	-1/4	1/8
✓ 6	S		-1/4	1/4
✓ 8		S	-1/4	1/8
10	M		0	0
✓ 12		M	3/8	-1/8
✓ 14	L		3/8	-1/4
✓ 16		L	3/8	-1/8
✓ 18	XL	XL	1/2	-1/4
✓ 20	XXL	XXL	1/2	-1/8

WAISTPLCMNT

Sizes	M-8-10	M-10-12	dx	dy
✓ 2	XS		-1/4	1/4
✓ 4		XS	-1/4	1/4
✓ 6	S		-1/4	1/4
✓ 8		S	-1/4	1/4
10	M		0	0
✓ 12		M	3/8	-1/4
✓ 14	L		3/8	-1/4
✓ 16		L	3/8	-1/4
✓ 18	XL	XL	1/2	-1/4
✓ 20	XXL	XXL	1/2	-1/4

NK WIDTH

Sizes	M-8-10	M-10-12	dx	dy
✓ 2	XS		1/16	0
✓ 4		XS	1/16	0
✓ 6	S		1/16	0
✓ 8		S	1/16	0
10	M		0	0
✓ 12		M	-1/16	0
✓ 14	L		-1/16	0
✓ 16		L	-1/16	0
✓ 18	XL	XL	-1/16	0
✓ 20	XXL	XXL	-1/16	0

SWEEP/HPS BODY LGTH

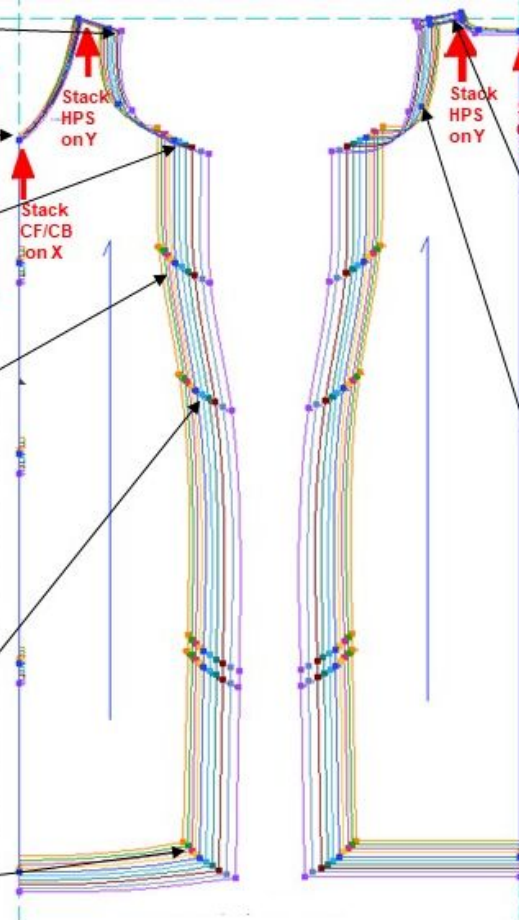
Sizes	M-8-10	M-10-12	dx	dy
✓ 2	XS		-1/4	1/4
✓ 4		XS	-1/4	1/4
✓ 6	S		-1/4	1/4
✓ 8		S	-1/4	1/4
10	M		0	0
✓ 12		M	3/8	-1/4
✓ 14	L		3/8	-1/4
✓ 16		L	3/8	-1/4
✓ 18	XL	XL	1/2	-1/4
✓ 20	XXL	XXL	1/2	-1/4

HIP PLCMNT

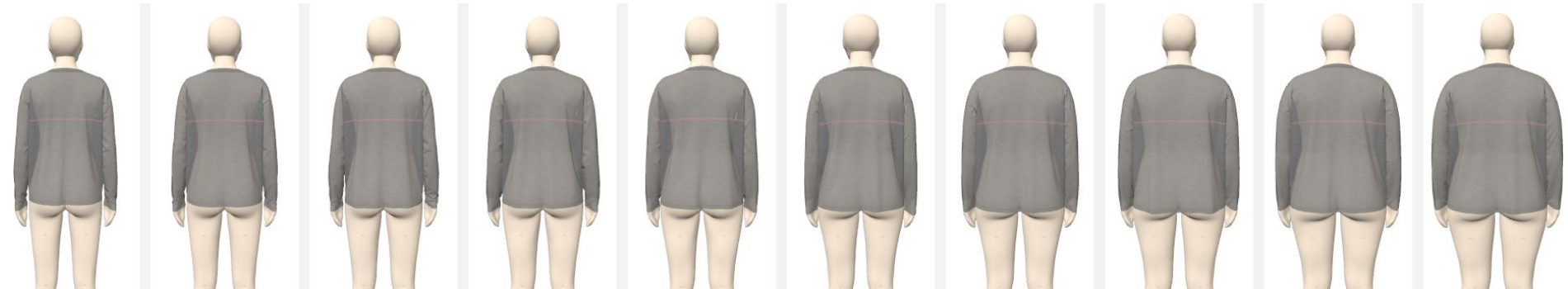
Sizes	M-8-10	M-10-12	dx	dy
✓ 2	XS		-1/4	1/4
✓ 4		XS	-1/4	1/4
✓ 6	S		-1/4	1/4
✓ 8		S	-1/4	1/4
10	M		0	0
✓ 12		M	3/8	-1/4
✓ 14	L		3/8	-1/4
✓ 16		L	3/8	-1/4
✓ 18	XL	XL	1/2	-1/4
✓ 20	XXL	XXL	1/2	-1/4

X-FRT/BK / MID-AH PLACEMENT

Sizes	M-8-10	M-10-12	dx	dy
✓ 2	XS		1/8	1/8
✓ 4		XS	1/8	0
✓ 6	S		1/8	1/8
✓ 8		S	1/8	0
10	M		0	0
✓ 12		M	-3/16	-1/8
✓ 14	L		-3/16	-1/8
✓ 16		L	-3/16	0
✓ 18	XL	XL	-1/8	-1/8
✓ 20	XXL	XXL	-1/8	0



Women's - Dolman Drop Shoulder



M=8-10: XS(2)

S(4)

S(6)

M(8)

M(10)

L(12)

L(14)

XL(16)

XL(18)

XXL(20)

M=10-12: XS(2)

XS(4)

S(6)

S(8)

M(10)

M(12)

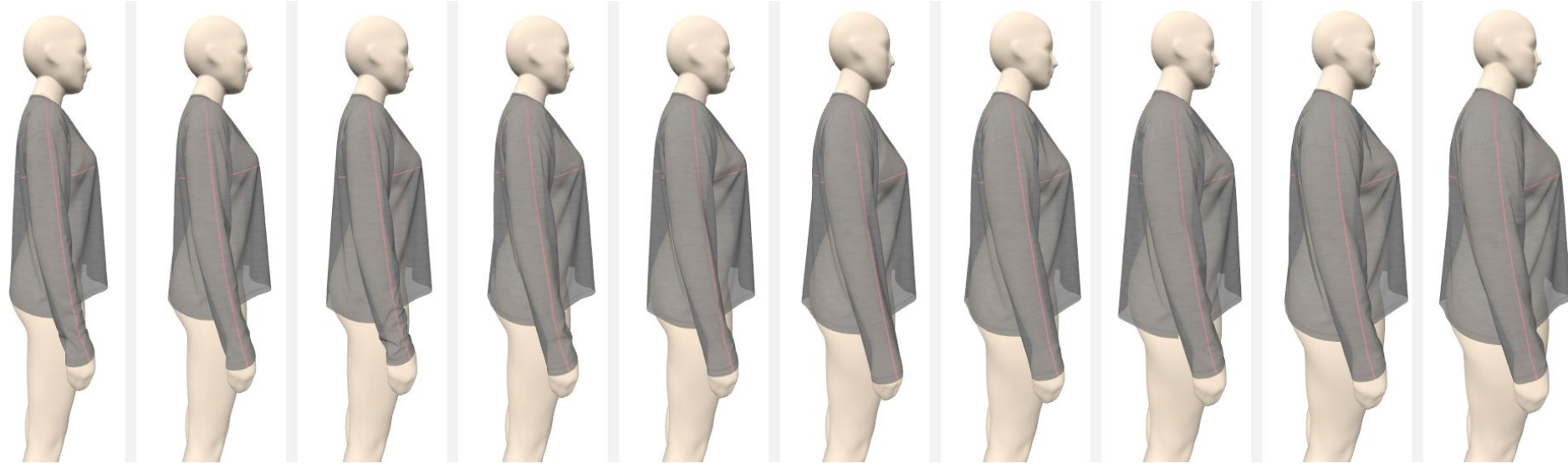
L(14)

L(16)

XL(18)

XXL(20)

Women's - Dolman Drop Shoulder



M=8-10: XS(2)

S(4)

S(6)

M(8)

M(10)

L(12)

L(14)

XL(16)

XL(18)

XXL(20)

M=10-12: XS(2)

XS(4)

S(6)

S(8)

M(10)

M(12)

L(14)

L(16)

XL(18)

XXL(20)

Women's - Dolman Drop Shoulder

FRT NK DROP

Sizes	M=8-10	M=10-12	dx	dy
✓ 2	XS		0	1/8
✓ 4		XS	0	0
✓ 6	S		0	1/8
✓ 8		S	0	0
10	M		0	0
✓ 12		M	0	0
✓ 14	L		0	-1/8
✓ 16		L	0	0
✓ 18	XL	XL	0	-1/8
✓ 20	XXL	XXL	0	0

NECK WIDTH

Sizes	M=8-10	M=10-12	dx	dy
✓ 2	XS		-1/16	0
✓ 4		XS	-1/16	0
✓ 6	S		-1/16	0
✓ 8		S	-1/16	0
10	M		0	0
✓ 12		M	1/16	0
✓ 14	L		1/16	0
✓ 16		L	1/16	0
✓ 18	XL	XL	1/16	0
✓ 20	XXL	XXL	1/16	0

ACRSS SHOULDER/SLOPE

Sizes	M=8-10	M=10-12	dx	dy
✓ 2	XS		-1/4	0
✓ 4		XS	-1/4	0
✓ 6	S		-1/4	0
✓ 8		S	-1/4	0
10	M		0	0
✓ 12		M	3/8	0
✓ 14	L		3/8	0
✓ 16		L	3/8	0
✓ 18	XL	XL	1/2	0
✓ 20	XXL	XXL	1/2	0

Grading units = inches

+y
-x ← → +x
-y

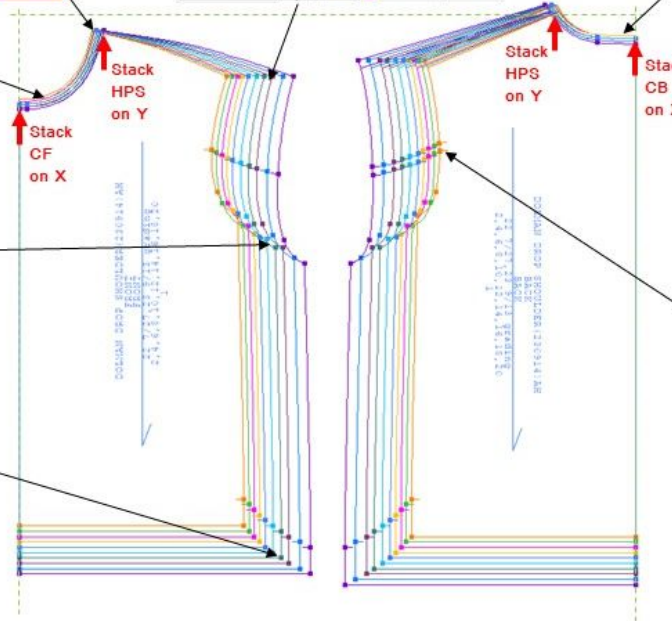
Sizes	M=8-10	M=10-12	dx	dy
✓ 2	XS		0	0
✓ 4		XS	0	0
✓ 6	S		0	0
✓ 8		S	0	1/8
10	M		0	0
✓ 12		M	0	0
✓ 14	L		0	0
✓ 16		L	0	-1/8
✓ 18	XL	XL	0	0
✓ 20	XXL	XXL	0	-1/8

CHEST / AH DROP

Sizes	M=8-10	M=10-12	dx	dy
✓ 2	XS		-1/4	1/2
✓ 4		XS	-1/4	0
✓ 6	S		-1/4	3/8
✓ 8		S	-1/4	1/8
10	M		0	0
✓ 12		M	3/8	-1/8
✓ 14	L		3/8	-3/8
✓ 16		L	3/8	0
✓ 18	XL	XL	1/2	-1/2
✓ 20	XXL	XXL	1/2	-1/4

SWEEP / HPS BODY LENGTH

Sizes	M=8-10	M=10-12	dx	dy
✓ 2	XS		-1/4	1/4
✓ 4		XS	-1/4	1/4
✓ 6	S		-1/4	1/4
✓ 8		S	-1/4	1/4
10	M		0	0
✓ 12		M	3/8	-1/4
✓ 14	L		3/8	-1/4
✓ 16		L	3/8	-1/4
✓ 18	XL	XL	1/2	-1/4
✓ 20	XXL	XXL	1/2	-1/4

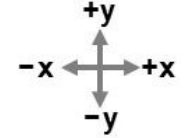


X-FRT/BK / MID-AH PLACEMENT

Sizes	M=8-10	M=10-12	dx	dy
✓ 2	XS		1/4	1/8
✓ 4		XS	1/4	1/8
✓ 6	S		1/4	1/8
✓ 8		S	1/4	1/8
10	M		0	0
✓ 12		M	-3/8	-1/8
✓ 14	L		-3/8	-1/8
✓ 16		L	-3/8	-1/8
✓ 18	XL	XL	-1/2	-1/8
✓ 20	XXL	XXL	-1/2	-1/8

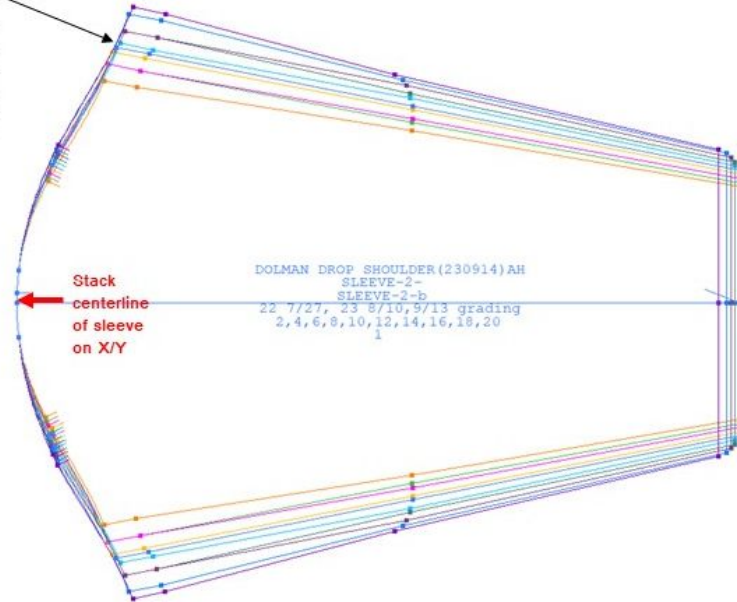
Women's - Dolman Drop Shoulder

Grading units = inches



SLV CAP HT/ SLV UPPER ARTM

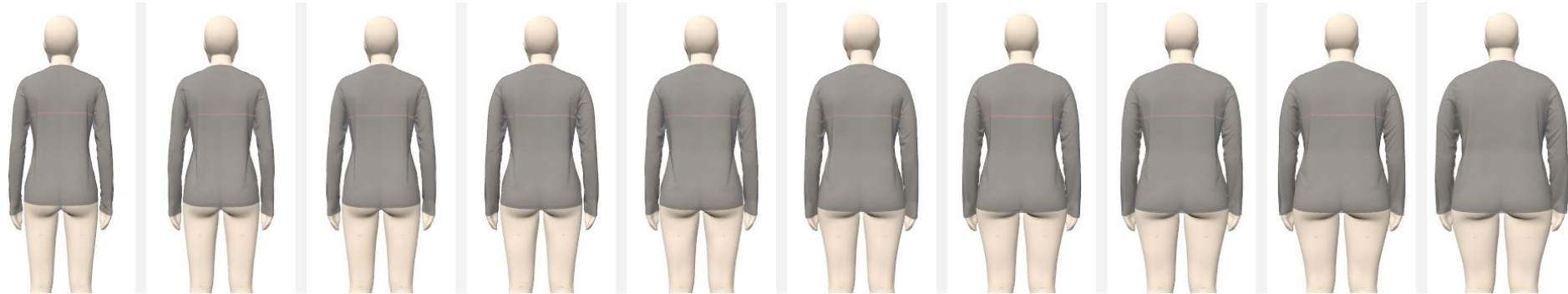
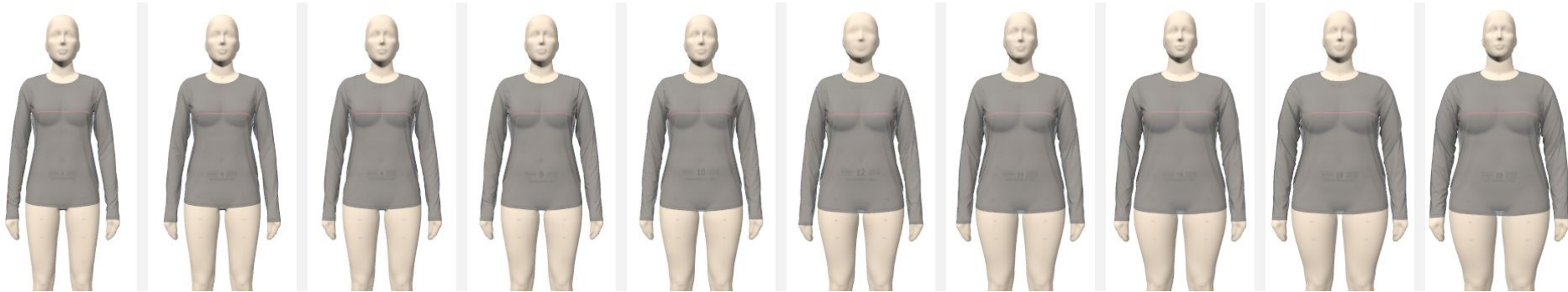
Sizes	M=8-10	M=10-12	dx	dy
✓ 2	XS		-1/8	-1/2
✓ 4		XS	0	0
✓ 6	S		-1/8	-3/8
✓ 8		S	-1/8	-1/8
10	M		0	0
✓ 12		M	1/8	1/8
✓ 14	L		1/8	3/8
✓ 16		L	0	0
✓ 18	XL	XL	1/8	1/2
✓ 20	XXL	XXL	1/8	3/16



SPLIT CB SLV LENGTH / SLV OPENING

Sizes	M=8-10	M=10-12	dx	dy
✓ 2	XS		0	1/8
✓ 4		XS	0	1/8
✓ 6	S		0	1/8
✓ 8		S	0	1/8
10	M		0	0
✓ 12		M	-1/8	-1/8
✓ 14	L		0	-1/8
✓ 16		L	-1/8	-1/8
✓ 18	XL	XL	-1/8	-1/8
✓ 20	XXL	XXL	-1/4	-1/8

Women's - LS Crew Tee



M=8-10: XS(2)

S(4)

S(6)

M(8)

M(10)

L(12)

L(14)

XL(16)

XL(18)

XXL(20)

M=10-12: XS(2)

XS(4)

S(6)

S(8)

M(10)

M(12)

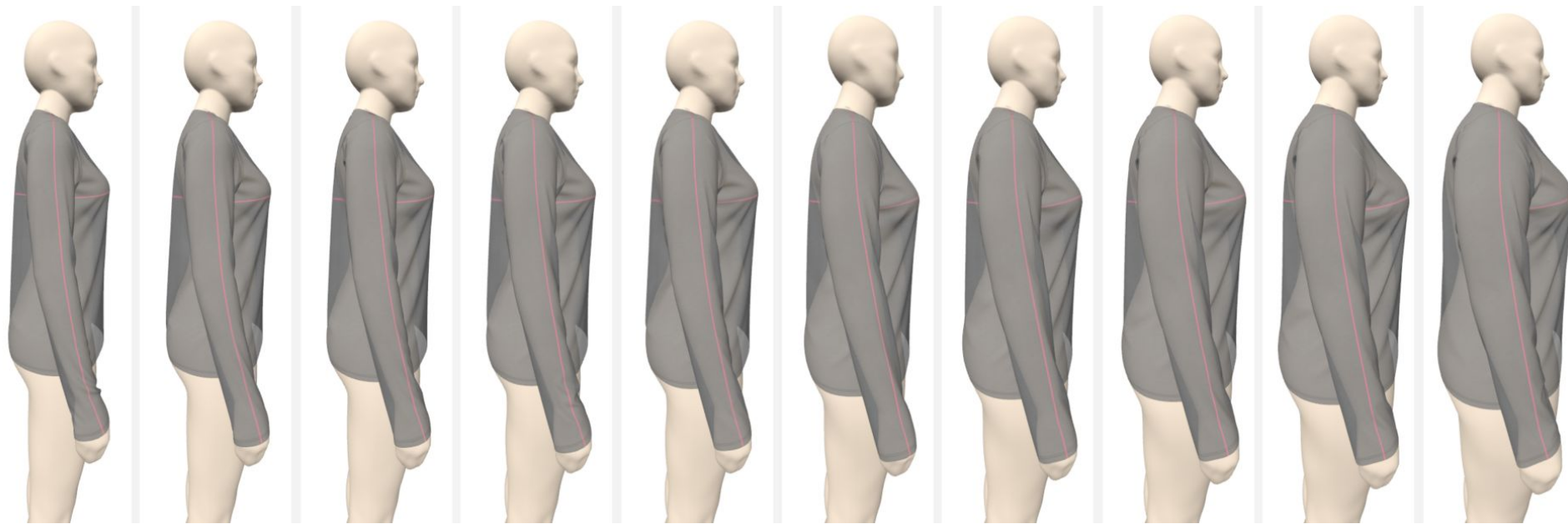
L(14)

L(16)

XL(18)

XXL(20)

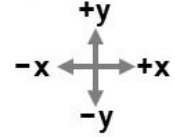
Women's - LS Crew Tee



M=8-10: XS(2)	S(4)	S(6)	M(8)	M(10)	L(12)	L(14)	XL(16)	XL(18)	XXL(20)
M=10-12: XS(2)	XS(4)	S(6)	S(8)	M(10)	M(12)	L(14)	L(16)	XL(18)	XXL(20)

Women's - LS Crew Tee

Grading units = inches



FRT NK DROP

Sizes	M=8-10	M=10-12	dx	dy
✓ 2	XS		0	1/8
✓ 4		XS	0	0
✓ 6	S		0	1/8
✓ 8		S	0	0
10	M		0	0
✓ 12		M	0	0
✓ 14	L		0	-1/8
✓ 16		L	0	0
✓ 18	XL	XL	0	-1/8
✓ 20	XXL	XXL	0	0

NECK WIDTH

Sizes	M=8-10	M=10-12	dx	dy
✓ 2	XS		-1/16	0
✓ 4		XS	-1/16	0
✓ 6	S		-1/16	0
✓ 8		S	-1/16	0
10	M		0	0
✓ 12		M	1/16	0
✓ 14	L		1/16	0
✓ 16		L	1/16	0
✓ 18	XL	XL	1/16	0
✓ 20	XXL	XXL	1/16	0

ACRSS SHOULDER/SLOPE

SHOULDER SLOPE PRIORITY = PARALLEL SHOULDER LINE WITH CORE

Sizes	M=8-10	M=10-12	dx	dy
✓ 2	XS		-1/8	0
✓ 4		XS	-1/8	0
✓ 6	S		-1/8	0
✓ 8		S	-1/8	0
10	M		0	0
✓ 12		M	3/16	0
✓ 14	L		3/16	0
✓ 16		L	3/16	0
✓ 18	XL	XL	1/8	0
✓ 20	XXL	XXL	1/8	0

BK NK DROP

Sizes	M=8-10	M=10-12	dx	dy
✓ 2	XS		0	0
✓ 4		XS	0	0
✓ 6	S		0	0
✓ 8		S	0	1/8
10	M		0	0
✓ 12		M	0	0
✓ 14	L		0	0
✓ 16		L	0	-1/8
✓ 18	XL	XL	0	0
✓ 20	XXL	XXL	0	-1/8

CHEST / AH DROP

Sizes	M=8-10	M=10-12	dx	dy
✓ 2	XS		-1/4	1/4
✓ 4		XS	-1/4	1/8
✓ 6	S		-1/4	1/4
✓ 8		S	-1/4	1/8
10	M		0	0
✓ 12		M	3/8	-1/8
✓ 14	L		3/8	-1/4
✓ 16		L	3/8	-1/8
✓ 18	XL	XL	1/2	-1/4
✓ 20	XXL	XXL	1/2	-1/8

X-FRT/BK /

MID-AH PLACEMENT

Sizes	M=8-10	M=10-12	dx	dy
✓ 2	XS		1/8	1/8
✓ 4		XS	1/8	0
✓ 6	S		1/8	1/8
✓ 8		S	1/8	0
10	M		0	0
✓ 12		M	-3/16	-1/8
✓ 14	L		-3/16	-1/8
✓ 16		L	-3/16	0
✓ 18	XL	XL	-1/8	-1/8
✓ 20	XXL	XXL	-1/8	0

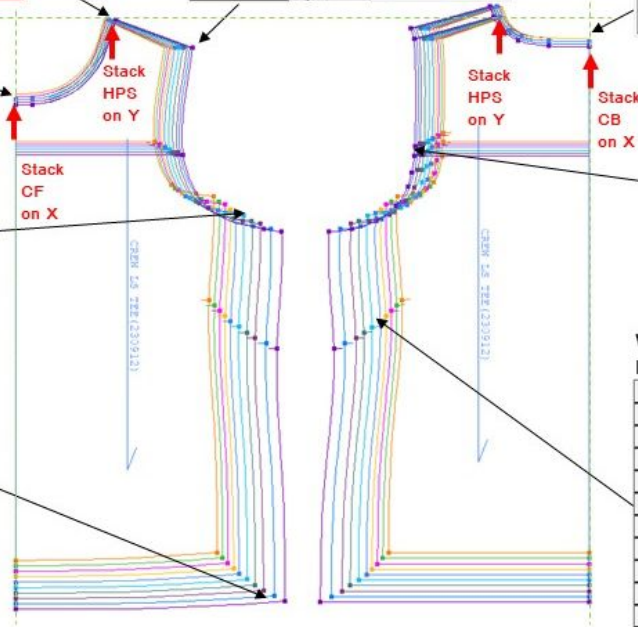
SWEEP / HPS BODY LENGTH

Sizes	M=8-10	M=10-12	dx	dy
✓ 2	XS		-1/4	1/4
✓ 4		XS	-1/4	1/4
✓ 6	S		-1/4	1/4
✓ 8		S	-1/4	1/4
10	M		0	0
✓ 12		M	3/8	-1/4
✓ 14	L		3/8	-1/4
✓ 16		L	3/8	-1/4
✓ 18	XL	XL	1/2	-1/4
✓ 20	XXL	XXL	1/2	-1/4

WAIST /

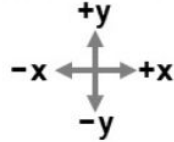
HPS PLACEMENT

Sizes	M=8-10	M=10-12	dx	dy
✓ 2	XS		1/4	1/4
✓ 4		XS	1/4	1/4
✓ 6	S		1/4	1/4
✓ 8		S	1/4	1/4
10	M		0	0
✓ 12		M	-3/8	-1/4
✓ 14	L		-3/8	-1/4
✓ 16		L	-3/8	-1/4
✓ 18	XL	XL	-1/2	-1/4
✓ 20	XXL	XXL	-1/2	-1/4



Women's - LS Crew Tee

Grading units = inches



SLV CAP HT/ SLV UPPER ARTM

Sizes	M=8-10	M=10-12	dx	dy
✓ 2	XS		-1/8	-1/4
✓ 4		XS	-1/8	-1/8
✓ 6	S		-1/8	-1/4
✓ 8		S	-1/8	-1/8
10	M		0	0
✓ 12		M	1/8	1/4
✓ 14	L		1/8	1/4
✓ 16		L	1/8	1/4
✓ 18	XL	XL	1/8	7/16
✓ 20	XXL	XXL	0	1/2

ELBOW / MID POINT UNDERARM

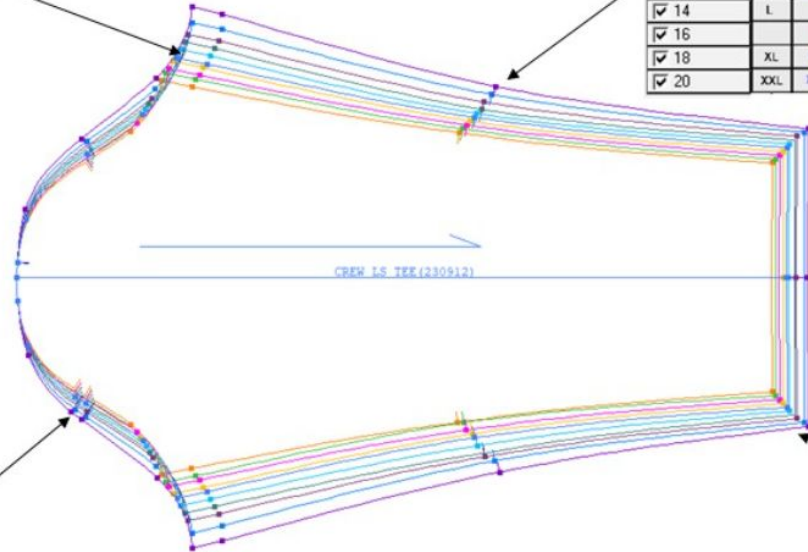
Sizes	M=8-10	M=10-12	dx	dy
✓ 2	XS		-1/8	-1/8
✓ 4		XS	-1/8	-1/8
✓ 6	S		-1/8	-1/8
✓ 8		S	-1/8	-1/8
10	M		0	0
✓ 12		M	1/16	1/8
✓ 14	L		3/16	1/8
✓ 16		L	1/16	1/4
✓ 18	XL	XL	1/4	1/4
✓ 20	XXL	XXL	1/8	1/4

FRT / BACK CAP WIDTH
(REF ONLY)

Sizes	M=8-10	M=10-12	dx	dy
✓ 2	XS		-1/16	1/8
✓ 4		XS	0	0
✓ 6	S		-1/16	1/8
✓ 8		S	0	0
10	M		0	0
✓ 12		M	1/16	-1/8
✓ 14	L		1/16	-1/8
✓ 16		L	-1/16	-1/16
✓ 18	XL	XL	0	-1/8
✓ 20	XXL	XXL	-1/8	-1/16

SPLIT CB SL LENGTH /
SLV OPENING

Sizes	M=8-10	M=10-12	dx	dy
✓ 2	XS		-1/8	1/8
✓ 4		XS	-1/8	1/8
✓ 6	S		-1/8	1/8
✓ 8		S	-1/8	1/8
10	M		0	0
✓ 12		M	1/16	-1/8
✓ 14	L		3/16	-1/8
✓ 16		L	1/16	-1/8
✓ 18	XL	XL	1/4	-1/8
✓ 20	XXL	XXL	1/8	-1/8



Women's - LS Hoodie



M=8-10: XS(2)

S(4)

S(6)

M(8)

M(10)

L(12)

L(14)

XL(16)

XL(18)

XXL(20)

M=10-12: XS(2)

XS(4)

S(6)

S(8)

M(10)

M(12)

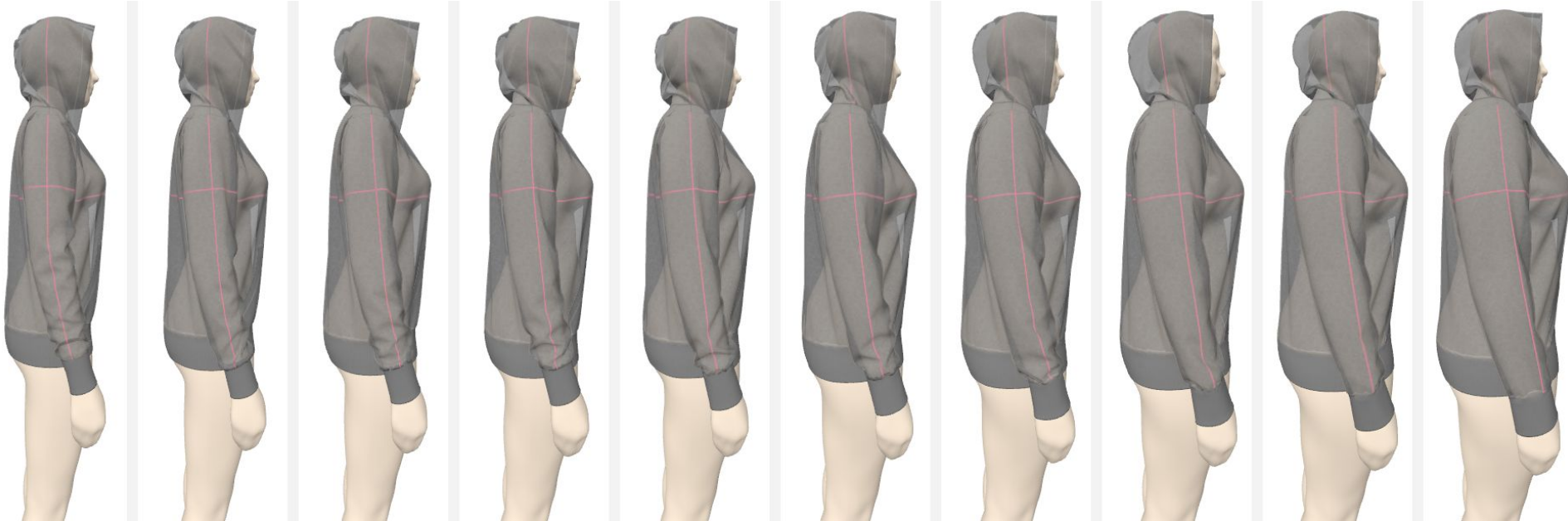
L(14)

L(16)

XL(18)

XXL(20)

Women's - LS Hoodie



M=8-10: XS(2)

S(4)

S(6)

M(8)

M(10)

L(12)

L(14)

XL(16)

XL(18)

XXL(20)

M=10-12: XS(2)

XS(4)

S(6)

S(8)

M(10)

M(12)

L(14)

L(16)

XL(18)

XXL(20)

Women's - LS Hoodie

DX : NK WIDTH

Size	M-(8-10)	M-(10-12)	dx	dy	dd	<>
2	XS		1/16	0	1/16	☑
4		XS	1/16	0	1/16	☑
6	S		1/16	0	1/16	☑
8		S	1/16	0	1/16	☑
10	M		0	0	0	☑
12		M	-1/16	0	1/16	☑
14	L		-1/16	0	1/16	☑
16		L	-1/16	0	1/16	☑
18	XL	XL	-1/16	0	1/16	☑
20	XXL	XXL	-1/16	0	1/16	☑

DY : BK NK DROP

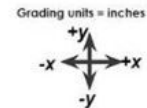
Size	M-(8-10)	M-(10-12)	dx	dy	dd	<>
2	XS		0	0	0	☑
4		XS	0	0	0	☑
6	S		0	0	0	☑
8		S	0	1/8	1/8	☑
10	M		0	0	0	☑
12		M	0	0	0	☑
14	L		0	0	0	☑
16		L	0	-1/8	1/8	☑
18	XL	XL	0	0	0	☑
20	XXL	XXL	0	-1/8	1/8	☑

DY : FRT NK DROP

Size	M-(8-10)	M-(10-12)	dx	dy	dd	<>
2	XS		0	1/8	1/8	☑
4		XS	0	0	0	☑
6	S		0	1/8	1/8	☑
8		S	0	0	0	☑
10	M		0	0	0	☑
12		M	0	0	0	☑
14	L		0	-1/8	1/8	☑
16		L	0	0	0	☑
18	XL	XL	0	-1/8	1/8	☑
20	XXL	XXL	0	0	0	☑

**DX : CHEST 1"BLW A/H
DY : A/H DROP FRM HPS**

Size	M-(8-10)	M-(10-12)	dx	dy	dd	<>
2	XS		-1/4	1/4	3/8	☑
4		XS	-1/4	1/8	5/16	☑
6	S		-1/4	1/4	3/8	☑
8		S	-1/4	1/8	5/16	☑
10	M		0	0	0	☑
12		M	3/8	-1/8	3/8	☑
14	L		3/8	-1/4	7/16	☑
16		L	3/8	-1/8	3/8	☑
18	XL	XL	1/2	-1/4	9/16	☑
20	XXL	XXL	1/2	-1/8	1/2	☑



DX : ACROSS SHOULDER

Size	M-(8-10)	M-(10-12)	dx	dy	dd	<>
2	XS		1/8	0	1/8	☑
4		XS	1/8	0	1/8	☑
6	S		1/8	0	1/8	☑
8		S	1/8	0	1/8	☑
10	M		0	0	0	☑
12		M	-3/16	0	3/16	☑
14	L		-3/16	0	3/16	☑
16		L	-3/16	0	3/16	☑
18	XL	XL	-1/8	0	1/8	☑
20	XXL	XXL	-1/8	0	1/8	☑



FRT & BK AS PER GRADE RULE

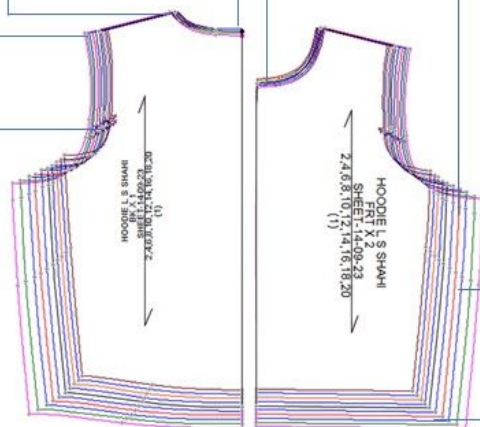
**DX : WAIST 1/2" MEAS
DY : WAIST PLCMNT FRM HPS**

Size	M-(8-10)	M-(10-12)	dx	dy	dd	<>
2	XS		-1/4	1/4	3/8	☑
4		XS	-1/4	1/4	3/8	☑
6	S		-1/4	1/4	3/8	☑
8		S	-1/4	1/4	3/8	☑
10	M		0	0	0	☑
12		M	3/8	-1/4	7/16	☑
14	L		3/8	-1/4	7/16	☑
16		L	3/8	-1/4	7/16	☑
18	XL	XL	1/2	-1/4	9/16	☑
20	XXL	XXL	1/2	-1/4	9/16	☑

FRT & BK AS PER GRADE RULE

**DX : ACROSS FRT & BK
DY : ACROSS FRT & BK PLCMNT FRM HPS**

Size	M-(8-10)	M-(10-12)	dx	dy	dd	<>
2	XS		1/8	1/8	3/16	☑
4		XS	1/8	0	1/8	☑
6	S		1/8	1/8	3/16	☑
8		S	1/8	0	1/8	☑
10	M		0	0	0	☑
12		M	-3/16	-1/8	1/4	☑
14	L		-3/16	-1/8	1/4	☑
16		L	-3/16	0	3/16	☑
18	XL	XL	-1/8	-1/8	3/16	☑
20	XXL	XXL	-1/8	0	1/8	☑



**DX : SWEEP @ SEAM
DY : LENGTH FRM HPS**

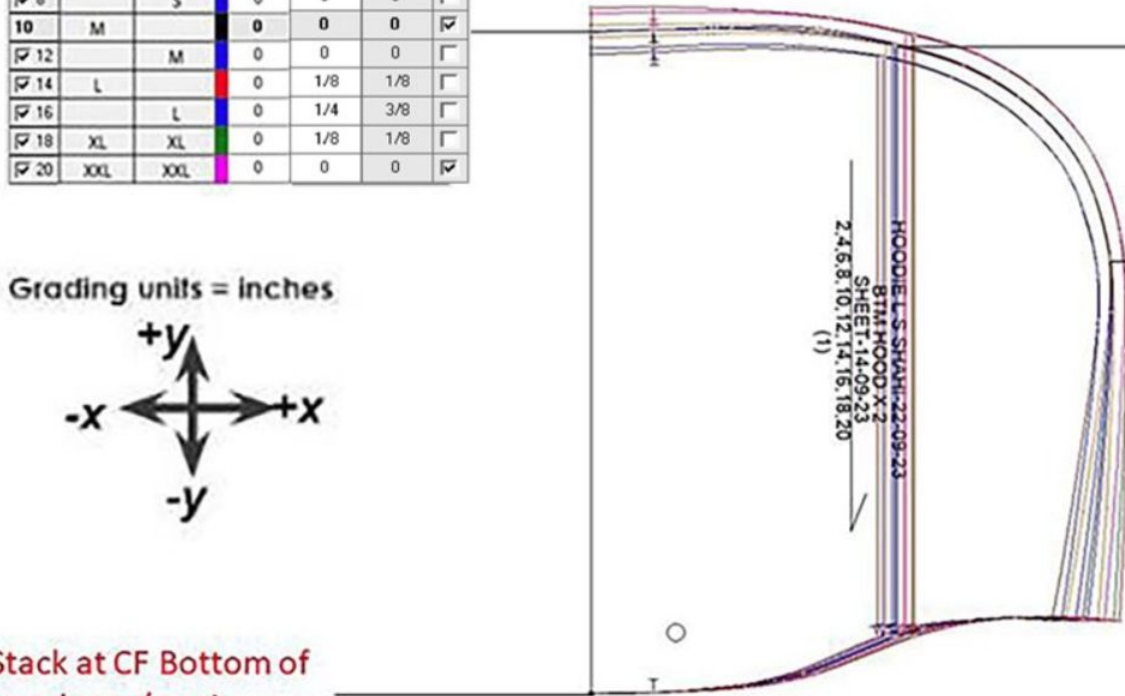
Size	M-(8-10)	M-(10-12)	dx	dy	dd	<>
2	XS		-1/4	1/4	3/8	☑
4		XS	-1/4	1/4	3/8	☑
6	S		-1/4	1/4	3/8	☑
8		S	-1/4	1/4	3/8	☑
10	M		0	0	0	☑
12		M	3/8	-1/4	7/16	☑
14	L		3/8	-1/4	7/16	☑
16		L	3/8	-1/4	7/16	☑
18	XL	XL	1/2	-1/4	9/16	☑
20	XXL	XXL	1/2	-1/4	9/16	☑

Women's - LS Hoodie

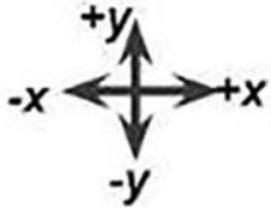
DY: HOOD OPENING

Size	M-(8-10)	M-(10-12)	dx	dy	dd	<=>
2	XS		0	-1/8	1/8	☑
4		XS	0	-1/4	3/8	☑
6	S		0	-1/8	1/8	☑
8		S	0	0	0	☑
10	M		0	0	0	☑
12		M	0	0	0	☑
14	L		0	1/8	1/8	☑
16		L	0	1/4	3/8	☑
18	XL	XL	0	1/8	1/8	☑
20	XXL	XXL	0	0	0	☑

HOOD GRADING



Grading units = inches



DY: HOOD HEIGHT AT HPS

Size	M-(8-10)	M-(10-12)	dx	dy	dd	<=>
2	XS		-1/8	0	0	☑
4		XS	-1/16	-1/4	1/4	☑
6	S		-1/8	0	0	☑
8		S	-1/16	0	0	☑
10	M		0	0	0	☑
12		M	1/16	0	0	☑
14	L		1/8	0	0	☑
16		L	1/16	1/4	1/4	☑
18	XL	XL	1/8	0	0	☑
20	XXL	XXL	1/16	0	0	☑

DX : HOOD WIDTH

DY : HOOD WIDTH PLACEMENT

Size	M-(8-10)	M-(10-12)	dx	dy	dd	<=>
2	XS		0	-1/8	1/8	☑
4		XS	-1/4	-1/4	3/8	☑
6	S		0	-1/8	1/8	☑
8		S	0	0	0	☑
10	M		0	0	0	☑
12		M	0	0	0	☑
14	L		0	1/8	1/8	☑
16		L	1/4	1/4	3/8	☑
18	XL	XL	0	1/8	1/8	☑
20	XXL	XXL	0	0	0	☑

Stack at CF Bottom of hood on x/y axis

Women's - LS Hoodie

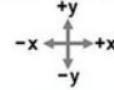
DX : SLV CAP HEIGHT
DY : SLV UPPER ARM

Size	M-(8-10)	M-(10-12)	dx	dy	dd	<=>
2	XS		-1/8	-1/4	5/16	☑
4		XS	-1/8	-1/8	3/16	☐
6	S		-1/8	-1/4	5/16	☑
8		S	-1/8	-1/8	3/16	☐
10	M		0	0	0	☑
12		M	1/8	1/4	5/16	☐
14	L		1/8	1/4	5/16	☐
16		L	1/8	1/4	5/16	☐
18	XL	XL	1/8	3/8	3/8	☐
20	XXL	XXL	0	1/2	1/2	☐

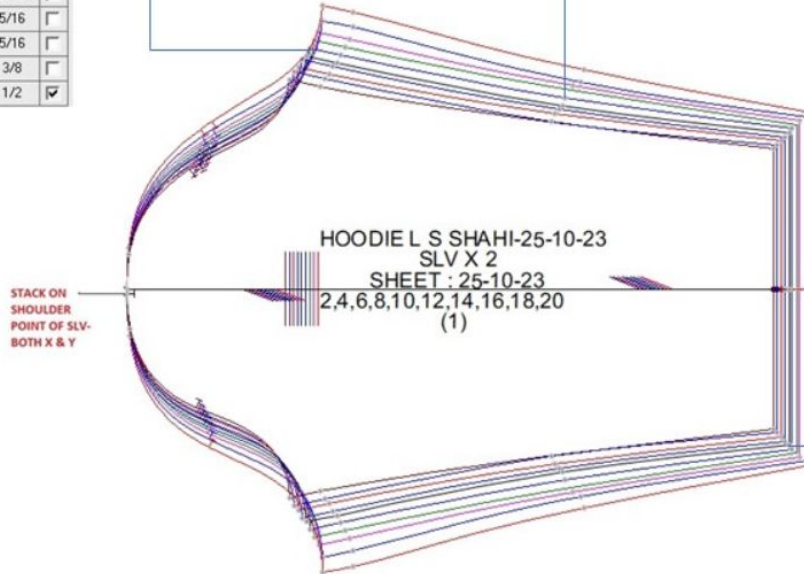
DX : SLV ELBOW PLCMNT FRM SLV OPENING
DY : SLV ELBOW

Size	M-(8-10)	M-(10-12)	dx	dy	dd	<=>
2	XS		-1/8	0	1/8	☑
4		XS	-1/8	-1/4	5/16	☐
6	S		-1/8	-1/8	3/16	☑
8		S	-1/8	-1/8	3/16	☐
10	M		0	0	0	☑
12		M	1/16	1/4	1/4	☐
14	L		3/16	1/4	5/16	☐
16		L	1/16	1/8	1/8	☐
18	XL	XL	1/4	1/8	5/16	☐
20	XXL	XXL	1/8	3/8	3/8	☑

Grading units = inches



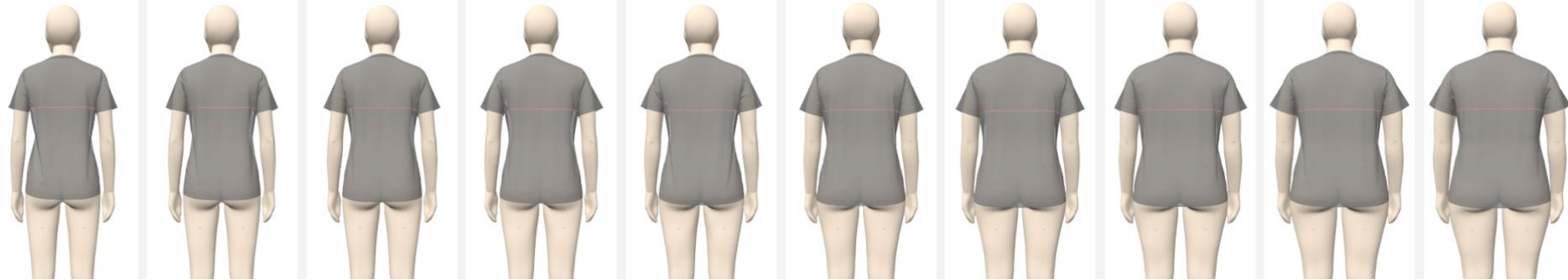
HOODIE L S



DX : SLV LENGTH
DY : SLV OPENING

Size	M-(8-10)	M-(10-12)	dx	dy	dd	<=>
2	XS		-1/8	1/8	3/16	☑
4		XS	-1/8	1/8	3/16	☐
6	S		-1/8	1/8	3/16	☑
8		S	-1/8	1/8	3/16	☐
10	M		0	0	0	☑
12		M	1/16	-1/8	1/8	☐
14	L		3/16	-1/8	1/4	☐
16		L	1/16	-1/8	1/8	☐
18	XL	XL	1/4	-1/8	5/16	☐
20	XXL	XXL	1/8	-1/8	3/16	☑

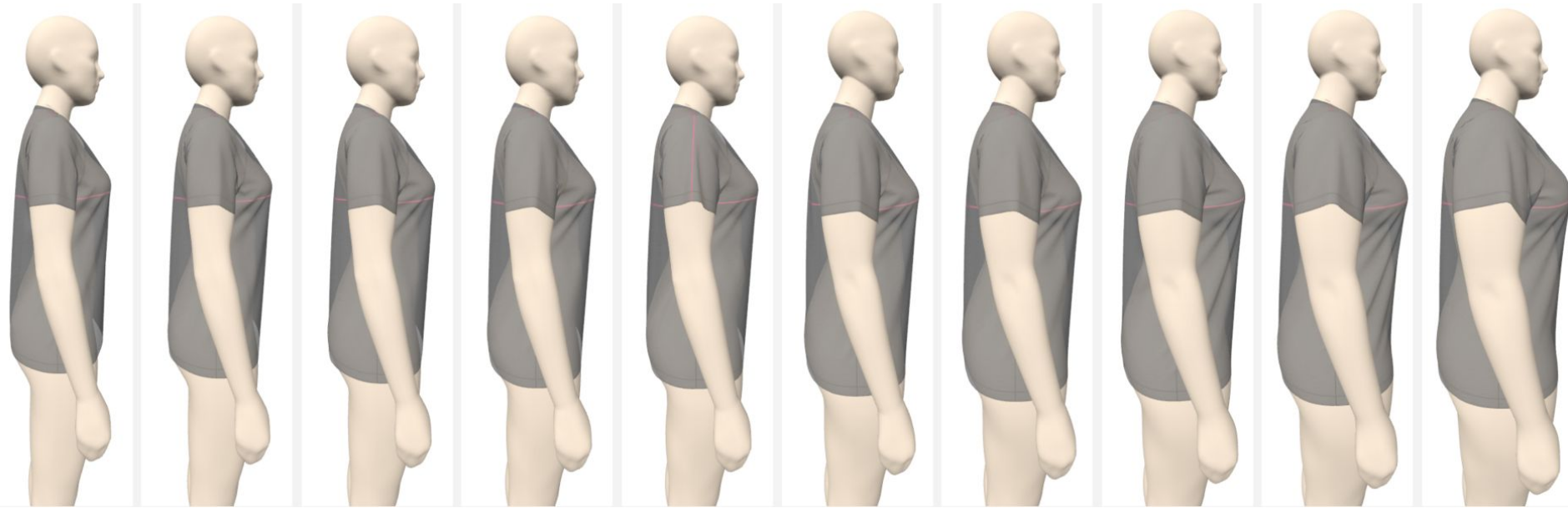
Women's - SS Crew Neck Tee



M=8-10: XS(2) S(4) S(6) M(8) M(10) L(12) L(14) XL(16) XL(18) XXL(20)

M=10-12: XS(2) XS(4) S(6) S(8) M(10) M(12) L(14) L(16) XL(18) XXL(20)

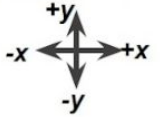
Women's - SS Crew Neck Tee



M=8-10: XS(2)	S(4)	S(6)	M(8)	M(10)	L(12)	L(14)	XL(16)	XL(18)	XXL(20)
M=10-12: XS(2)	XS(4)	S(6)	S(8)	M(10)	M(12)	L(14)	L(16)	XL(18)	XXL(20)

Women's - SS Crew Neck Tee

Grading units = inches



DX : NK WIDTH

Size	M-(8-10)	M-(10-12)	dx	dy	dd	<>
2	XS		1/16	0	1/16	☑
4		XS	1/16	0	1/16	☑
6	S		1/16	0	1/16	☑
8		S	1/16	0	1/16	☑
16	M		0	0	0	☑
12		M	-1/16	0	1/16	☑
14	L		-1/16	0	1/16	☑
16		L	-1/16	0	1/16	☑
18	XL	XL	-1/16	0	1/16	☑
20	XXL	XXL	-1/16	0	1/16	☑

DY : BK NK DROP

Size	M-(8-10)	M-(10-12)	dx	dy	dd	<>
2	XS		0	0	0	☑
4		XS	0	0	0	☑
6	S		0	0	0	☑
8		S	0	1/8	1/8	☑
16	M		0	0	0	☑
12		M	0	0	0	☑
14	L		0	0	0	☑
16		L	0	-1/8	1/8	☑
18	XL	XL	0	0	0	☑
20	XXL	XXL	0	-1/8	1/8	☑

DY : FRT NK DROP

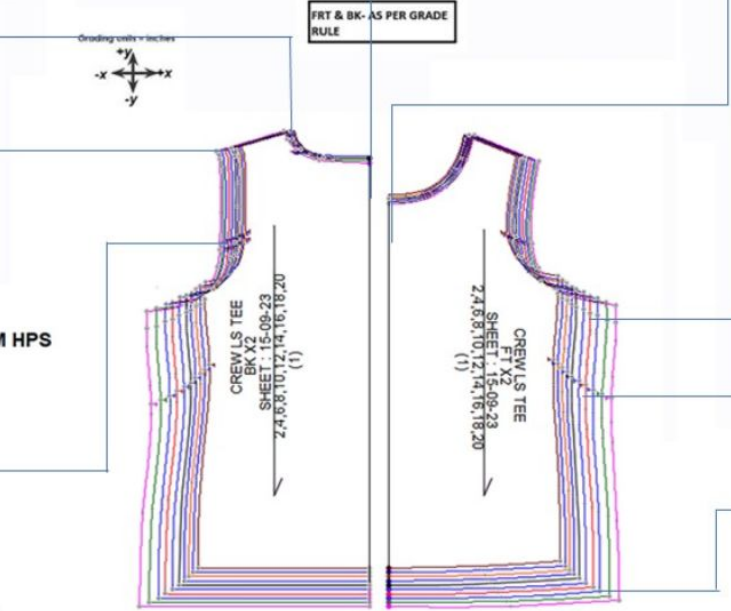
Size	M-(8-10)	M-(10-12)	dx	dy	dd	<>
2	XS		0	1/8	1/8	☑
4		XS	0	0	0	☑
6	S		0	1/8	1/8	☑
8		S	0	0	0	☑
16	M		0	0	0	☑
12		M	0	0	0	☑
14	L		0	-1/8	1/8	☑
16		L	0	0	0	☑
18	XL	XL	0	-1/8	1/8	☑
20	XXL	XXL	0	0	0	☑

**DX : CHEST 1" BLW A/H
DY : A/H DROP FRM HPS**

Size	M-(8-10)	M-(10-12)	dx	dy	dd	<>
2	XS		-1/4	1/4	3/8	☑
4		XS	-1/4	1/8	5/16	☑
6	S		-1/4	1/4	3/8	☑
8		S	-1/4	1/8	5/16	☑
16	M		0	0	0	☑
12		M	3/8	-1/8	3/8	☑
14	L		3/8	-1/4	7/16	☑
16		L	3/8	-1/8	3/8	☑
18	XL	XL	1/2	-1/4	9/16	☑
20	XXL	XXL	1/2	-1/8	1/2	☑

DX : ACROSS SHOULDER

Size	M-(8-10)	M-(10-12)	dx	dy	dd	<>
2	XS		1/8	0	1/8	☑
4		XS	1/8	0	1/8	☑
6	S		1/8	0	1/8	☑
8		S	1/8	0	1/8	☑
16	M		0	0	0	☑
12		M	-3/16	0	3/16	☑
14	L		-3/16	0	3/16	☑
16		L	-3/16	0	3/16	☑
18	XL	XL	-1/8	0	1/8	☑
20	XXL	XXL	-1/8	0	1/8	☑



**DX : WAIST 1/2" MEAS
DY : WAIST PLCMNT FRM HPS**

Size	M-(8-10)	M-(10-12)	dx	dy	dd	<>
2	XS		-1/4	1/4	3/8	☑
4		XS	-1/4	1/4	3/8	☑
6	S		-1/4	1/4	3/8	☑
8		S	-1/4	1/4	3/8	☑
16	M		0	0	0	☑
12		M	3/8	-1/4	7/16	☑
14	L		3/8	-1/4	7/16	☑
16		L	3/8	-1/4	7/16	☑
18	XL	XL	1/2	-1/4	9/16	☑
20	XXL	XXL	1/2	-1/4	9/16	☑

**DX : ACROSS FRT & BK
DY : ACROSS FRT & BK PLCMNT FRM HPS**

Size	M-(8-10)	M-(10-12)	dx	dy	dd	<>
2	XS		1/8	1/8	3/16	☑
4		XS	1/8	0	1/8	☑
6	S		1/8	1/8	3/16	☑
8		S	1/8	0	1/8	☑
16	M		0	0	0	☑
12		M	-3/16	-1/8	1/4	☑
14	L		-3/16	-1/8	1/4	☑
16		L	-3/16	0	3/16	☑
18	XL	XL	-1/8	-1/8	3/16	☑
20	XXL	XXL	-1/8	0	1/8	☑

**DX : SWEEP @ SEAM
DY : LENGTH FRM HPS**

Size	M-(8-10)	M-(10-12)	dx	dy	dd	<>
2	XS		-1/4	1/4	3/8	☑
4		XS	-1/4	1/4	3/8	☑
6	S		-1/4	1/4	3/8	☑
8		S	-1/4	1/4	3/8	☑
16	M		0	0	0	☑
12		M	3/8	-1/4	7/16	☑
14	L		3/8	-1/4	7/16	☑
16		L	3/8	-1/4	7/16	☑
18	XL	XL	1/2	-1/4	9/16	☑
20	XXL	XXL	1/2	-1/4	9/16	☑

Women's - SS Crew Neck Tee

dx- slv cap ht
dy- slv upperarm

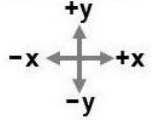
Sizes	M=8-10	M=10-12	dx	dy
✓ 2	XS		-1/8	-1/4
✓ 4		XS	0	-1/4
✓ 6	S		-1/8	-1/4
✓ 8		S	0	-1/4
10	M		0	0
✓ 12		M	1/16	1/4
✓ 14	L		3/16	1/4
✓ 16		L	0	1/4
✓ 18	XL	XL	0	1/2
✓ 20	XXL	XXL	0	1/2

SS CREW TEE

dx- slv length
dy- slv opening

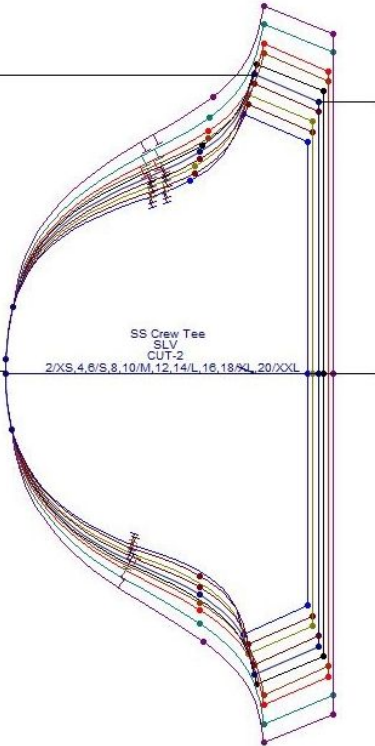
Sizes	M=8-10	M=10-12	dx	dy
✓ 2	XS		-1/8	-1/4
✓ 4		XS	0	-1/4
✓ 6	S		-1/8	-1/4
✓ 8		S	0	-1/4
10	M		0	0
✓ 12		M	1/8	1/4
✓ 14	L		1/8	1/4
✓ 16		L	0	1/4
✓ 18	XL	XL	1/8	1/2
✓ 20	XXL	XXL	0	1/2

Grading units = inches



STACK ON
SHOULDER
POINT OF SLV-
BOTH X & Y

SS Crew Tee
SLV
CUT-2
2/XS,4,6/S,8,10/M,12,14/L,16,18/XL,20/XXL



Women's - SS Polo Shirt



M=8-10: XS(2)

S(4)

S(6)

M(8)

M(10)

L(12)

L(14)

XL(16)

XL(18)

XXL(20)

M=10-12: XS(2)

XS(4)

S(6)

S(8)

M(10)

M(12)

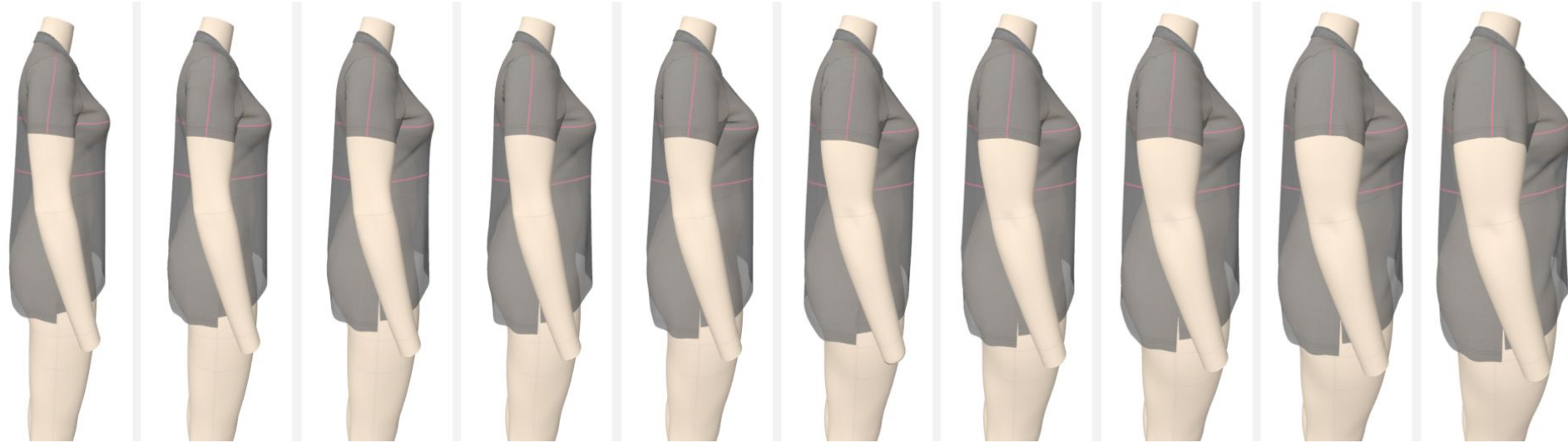
L(14)

L(16)

XL(18)

XXL(20)

Women's - SS Polo Shirt



M=8-10: XS(2)

S(4)

S(6)

M(8)

M(10)

L(12)

L(14)

XL(16)

XL(18)

XXL(20)

M=10-12: XS(2)

XS(4)

S(6)

S(8)

M(10)

M(12)

L(14)

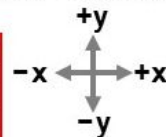
L(16)

XL(18)

XXL(20)

Women's - SS Polo Shirt

Grading units = inches



FRT NK DROP

Sizes	M=8-10	M=10-12	dx	dy
✓ 2	XS		0	1/8
✓ 4		XS	0	0
✓ 6	S		0	1/8
✓ 8		S	0	0
10	M		0	0
✓ 12		M	0	0
✓ 14	L		0	-1/8
✓ 16		L	0	0
✓ 18	XL	XL	0	-1/8
✓ 20	XXL	XXL	0	0

NECK WIDTH

Sizes	M=8-10	M=10-12	dx	dy
✓ 2	XS		-1/16	0
✓ 4		XS	-1/16	0
✓ 6	S		-1/16	0
✓ 8		S	-1/16	0
10	M		0	0
✓ 12		M	1/16	0
✓ 14	L		1/16	0
✓ 16		L	1/16	0
✓ 18	XL	XL	1/16	0
✓ 20	XXL	XXL	1/16	0

ACRSS SHOULDER/SLOPE

Sizes	M=8-10	M=10-12	dx	dy
✓ 2	XS		-1/8	0
✓ 4		XS	-1/8	0
✓ 6	S		-1/8	0
✓ 8		S	-1/8	0
10	M		0	0
✓ 12		M	3/16	0
✓ 14	L		3/16	0
✓ 16		L	3/16	0
✓ 18	XL	XL	1/8	0
✓ 20	XXL	XXL	1/8	0

BK NK DROP

Sizes	M=8-10	M=10-12	dx	dy
✓ 2	XS		0	0
✓ 4		XS	0	0
✓ 6	S		0	0
✓ 8		S	0	1/8
10	M		0	0
✓ 12		M	0	0
✓ 14	L		0	0
✓ 16		L	0	-1/8
✓ 18	XL	XL	0	0
✓ 20	XXL	XXL	0	-1/8

CHEST / AH DROP

Sizes	M=8-10	M=10-12	dx	dy
✓ 2	XS		-1/4	1/4
✓ 4		XS	-1/4	1/8
✓ 6	S		-1/4	1/4
✓ 8		S	-1/4	1/8
10	M		0	0
✓ 12		M	3/8	-1/8
✓ 14	L		3/8	-1/4
✓ 16		L	3/8	-1/8
✓ 18	XL	XL	1/2	-1/4
✓ 20	XXL	XXL	1/2	-1/8

SWEEP / HPS BODY LENGTH

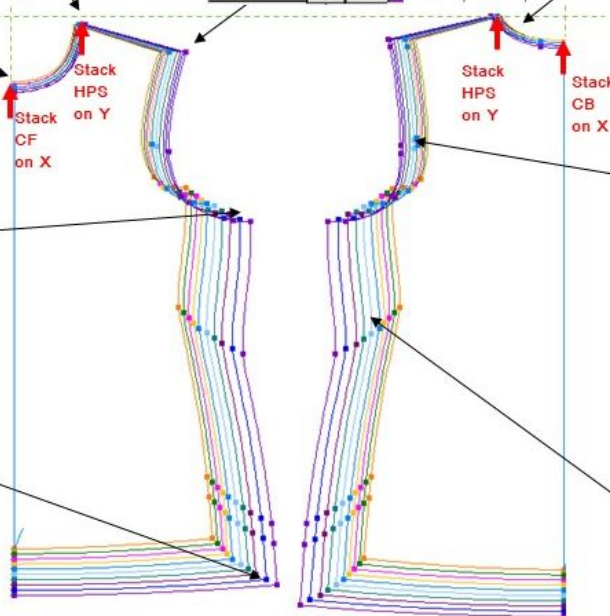
Sizes	M=8-10	M=10-12	dx	dy
✓ 2	XS		-1/4	1/4
✓ 4		XS	-1/4	1/4
✓ 6	S		-1/4	1/4
✓ 8		S	-1/4	1/4
10	M		0	0
✓ 12		M	3/8	-1/4
✓ 14	L		3/8	-1/4
✓ 16		L	3/8	-1/4
✓ 18	XL	XL	1/2	-1/4
✓ 20	XXL	XXL	1/2	-1/4

X-FRT/BK /
MID-AH PLACEMENT

Sizes	M=8-10	M=10-12	dx	dy
✓ 2	XS		-1/8	1/8
✓ 4		XS	-1/8	0
✓ 6	S		-1/8	1/8
✓ 8		S	-1/8	0
10	M		0	0
✓ 12		M	3/16	-1/8
✓ 14	L		3/16	-1/8
✓ 16		L	3/16	0
✓ 18	XL	XL	1/8	-1/8
✓ 20	XXL	XXL	1/8	0

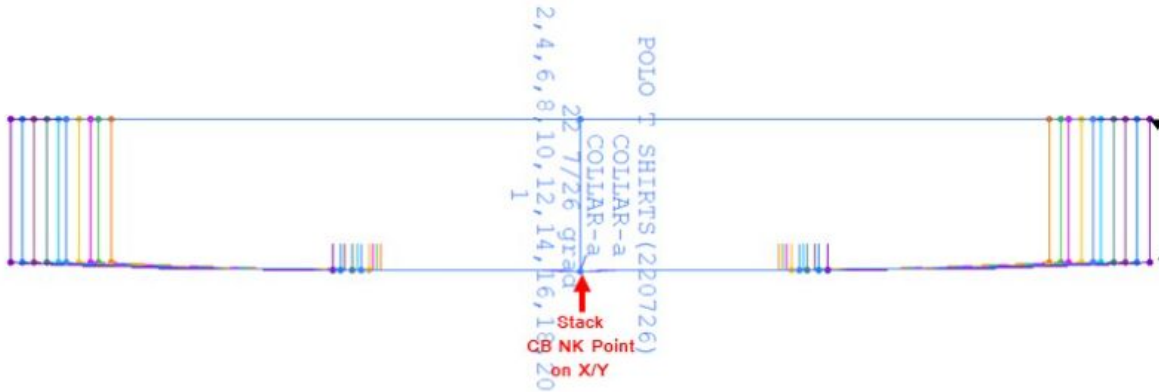
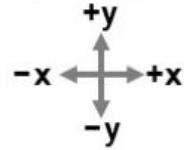
WAIST /
HPS PLACEMENT

Sizes	M=8-10	M=10-12	dx	dy
✓ 2	XS		1/4	1/4
✓ 4		XS	1/4	1/4
✓ 6	S		1/4	1/4
✓ 8		S	1/4	1/4
10	M		0	0
✓ 12		M	-3/8	-1/4
✓ 14	L		-3/8	-1/4
✓ 16		L	-3/8	-1/4
✓ 18	XL	XL	-1/2	-1/4
✓ 20	XXL	XXL	-1/2	-1/4



Women's - SS Polo Shirt

Grading units = inches

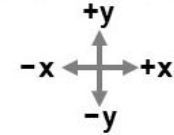


COLLAR POINT AT EDGE & NECK SEAM

Sizes	M=8-10	M=10-12	dx	dy
<input checked="" type="checkbox"/> 2	XS		-3/16	0
<input checked="" type="checkbox"/> 4		XS	-1/8	0
<input checked="" type="checkbox"/> 6	S		-3/16	0
<input checked="" type="checkbox"/> 8		S	-3/16	0
10	M		0	0
<input checked="" type="checkbox"/> 12		M	1/8	0
<input checked="" type="checkbox"/> 14	L		3/16	0
<input checked="" type="checkbox"/> 16		L	3/16	0
<input checked="" type="checkbox"/> 18	XL	XL	3/16	0
<input checked="" type="checkbox"/> 20	XXL	XXL	3/16	0

Women's - SS Polo Shirt

Grading units = inches



SLV CAP HT/ SLV UPPER ARM

Sizes	M=8-10	M=10-12	dx	dy
✓ 2	XS		-1/8	-1/4
✓ 4		XS	0	-1/4
✓ 6	S		-1/8	-1/4
✓ 8		S	0	-1/4
10	M		0	0
✓ 12		M	1/16	1/4
✓ 14	L		3/16	1/4
✓ 16		L	0	1/4
✓ 18	XL	XL	1/8	1/2
✓ 20	XXL	XXL	1/16	1/2

SLV UNDERARM LGTH / SLV OPNING

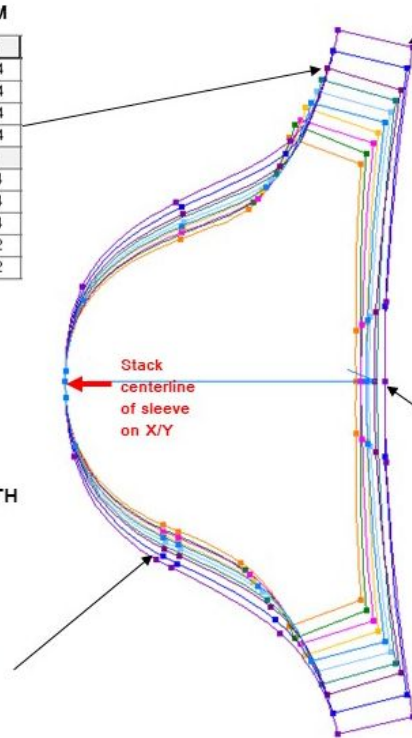
Sizes	M=8-10	M=10-12	dx	dy
✓ 2	XS		0	-1/4
✓ 4		XS	0	-1/4
✓ 6	S		0	-1/4
✓ 8		S	0	-1/4
10	M		0	0
✓ 12		M	0	1/4
✓ 14	L		0	1/4
✓ 16		L	0	1/4
✓ 18	XL	XL	0	1/2
✓ 20	XXL	XXL	0	1/2

SLV LGTH TOP OF SHLDR

Sizes	M=8-10	M=10-12	dx	dy
✓ 2	XS		-1/8	0
✓ 4		XS	0	0
✓ 6	S		-1/8	0
✓ 8		S	0	0
10	M		0	0
✓ 12		M	1/16	0
✓ 14	L		3/16	0
✓ 16		L	-1/16	0
✓ 18	XL	XL	1/4	0
✓ 20	XXL	XXL	0	0

FRT / BACK CAP WIDTH
(REF ONLY)

Sizes	M=8-10	M=10-12	dx	dy
✓ 2	XS		-1/16	-1/8
✓ 4		XS	0	0
✓ 6	S		-1/16	-1/8
✓ 8		S	0	0
10	M		0	0
✓ 12		M	1/16	1/8
✓ 14	L		1/16	1/8
✓ 16		L	-1/16	1/16
✓ 18	XL	XL	0	3/16
✓ 20	XXL	XXL	-1/8	1/8



Women's - 3/4 Sleeve Raglan



M=8-10: XS(2)

S(4)

S(6)

M(8)

M(10)

L(12)

L(14)

XL(16)

XL(18)

XXL(20)

M=10-12: XS(2)

XS(4)

S(6)

S(8)

M(10)

M(12)

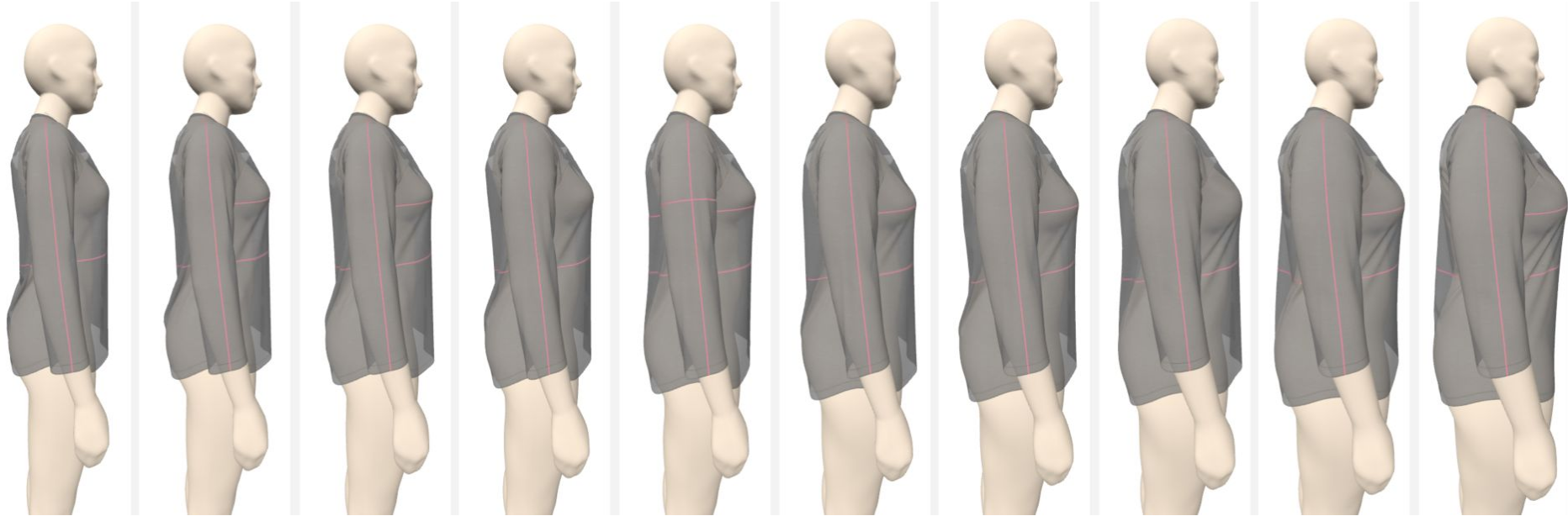
L(14)

L(16)

XL(18)

XXL(20)

Women's - 3/4 Sleeve Raglan



M=8-10: XS(2)

S(4)

S(6)

M(8)

M(10)

L(12)

L(14)

XL(16)

XL(18)

XXL(20)

M=10-12: XS(2)

XS(4)

S(6)

S(8)

M(10)

M(12)

L(14)

L(16)

XL(18)

XXL(20)

Women's - 3/4 Sleeve Raglan

DY: BK NK DROP

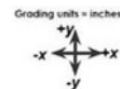
Size	M-(8-10)	M-(10-12)	dx	dy	dd	<>
2	XS		0	0	0	✓
4		XS	0	0	0	✓
6	S		0	0	0	✓
8		S	0	1/8	1/8	✓
10	M		0	0	0	✓
12		M	0	0	0	✓
14	L		0	0	0	✓
16		L	0	-1/8	1/8	✓
18	XL	XL	0	0	0	✓
20	XXL	XXL	0	-1/8	1/8	✓

DY: FRT NK DROP

Size	M-(8-10)	M-(10-12)	dx	dy	dd	<>
2	XS		0	1/8	1/8	✓
4		XS	0	0	0	✓
6	S		0	1/8	1/8	✓
8		S	0	0	0	✓
10	M		0	0	0	✓
12		M	0	0	0	✓
14	L		0	-1/8	1/8	✓
16		L	0	0	0	✓
18	XL	XL	0	-1/8	1/8	✓
20	XXL	XXL	0	0	0	✓

DX: CHEST 1"BLW A/H
DY: A/H DROP FRM HPS

Size	M-(8-10)	M-(10-12)	dx	dy	dd	<>
2	XS		-1/4	1/4	3/8	✓
4		XS	-1/4	1/8	5/16	✓
6	S		-1/4	1/4	3/8	✓
8		S	-1/4	1/8	5/16	✓
10	M		0	0	0	✓
12		M	3/8	-1/8	3/8	✓
14	L		3/8	-1/4	7/16	✓
16		L	3/8	-1/8	3/8	✓
18	XL	XL	1/2	-1/4	9/16	✓
20	XXL	XXL	1/2	-1/8	1/2	✓



FRT & BK- AS PER GRADE RULE

STACK HPS OF FRT & BK ON Y AXIS

DX: ACROSS FRT & BK
DY: ACROSS FRT & PLMNT FRM HPS

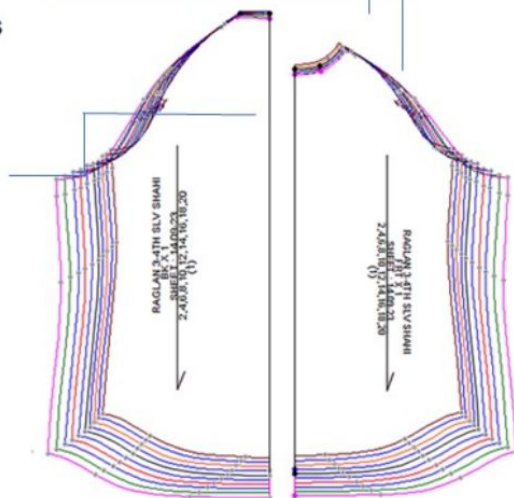
Size	M-(8-10)	M-(10-12)	dx	dy	dd	<>
2	XS		1/8	1/8	3/16	✓
4		XS	1/8	0	1/8	✓
6	S		1/8	1/8	3/16	✓
8		S	1/8	0	1/8	✓
10	M		0	0	0	✓
12		M	-3/16	-1/8	1/4	✓
14	L		-3/16	-1/8	1/4	✓
16		L	-3/16	0	3/16	✓
18	XL	XL	-1/8	-1/8	3/16	✓
20	XXL	XXL	-1/8	0	1/8	✓

DX: WAIST 1/2 MEAS
DY: WAIST PLCMNT FRM HPS

Size	M-(8-10)	M-(10-12)	dx	dy	dd	<>
2	XS		-1/4	1/4	3/8	✓
4		XS	-1/4	1/4	3/8	✓
6	S		-1/4	1/4	3/8	✓
8		S	-1/4	1/4	3/8	✓
10	M		0	0	0	✓
12		M	3/8	-1/4	7/16	✓
14	L		3/8	-1/4	7/16	✓
16		L	3/8	-1/4	7/16	✓
18	XL	XL	1/2	-1/4	9/16	✓
20	XXL	XXL	1/2	-1/4	9/16	✓

DX: SWEEP @ SEAM
DY: LENGTH FRM HPS

Size	M-(8-10)	M-(10-12)	dx	dy	dd	<>
2	XS		-1/4	1/4	3/8	✓
4		XS	-1/4	1/4	3/8	✓
6	S		-1/4	1/4	3/8	✓
8		S	-1/4	1/4	3/8	✓
10	M		0	0	0	✓
12		M	3/8	-1/4	7/16	✓
14	L		3/8	-1/4	7/16	✓
16		L	3/8	-1/4	7/16	✓
18	XL	XL	1/2	-1/4	9/16	✓
20	XXL	XXL	1/2	-1/4	9/16	✓



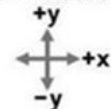
Women's - 3/4 Sleeve Raglan

DX : SLV CAP HEIGHT

DY : SLV UPPER ARM

Sizes	dx	dy	dd	<=>
2	-1/4	-1/4	3/8	☑
4	-1/4	-1/8	1/4	☐
6	-5/16	-1/4	7/16	☐
8	-1/4	-1/8	1/4	☐
10	0	0	0	☑
12	5/16	1/4	3/8	☐
14	3/8	1/4	7/16	☐
16	1/4	1/4	3/8	☐
18	3/8	3/8	9/16	☐
20	3/16	1/2	9/16	☑

Grading units = inches



RAGLAN 3/4TH SLEEVE

DX : SLV LENGTH

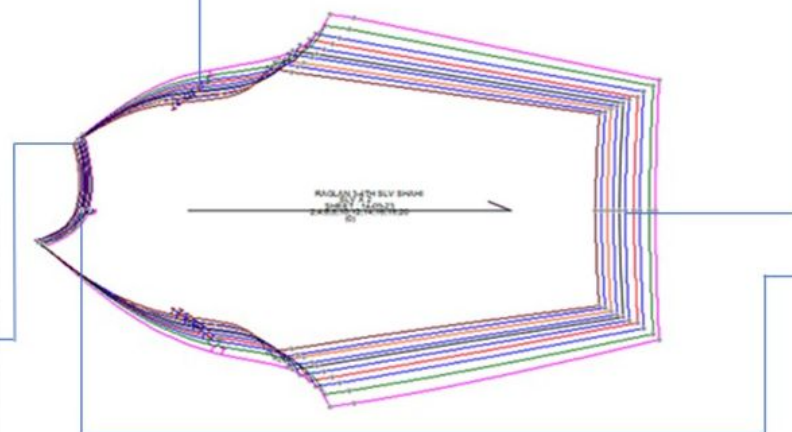
DY : SLV OPENING

Sizes	dx	dy	dd	<=>
2	-1/4	-1/8	5/16	☑
4	-1/4	-1/8	5/16	☐
6	-1/4	-1/8	5/16	☐
8	-1/4	-1/8	5/16	☐
10	0	0	0	☑
12	1/4	1/8	5/16	☐
14	3/8	1/8	3/8	☐
16	1/4	1/4	3/8	☐
18	3/8	1/4	7/16	☐
20	1/4	1/4	3/8	☑

Stack HPS of Slv on Y Axis

DX : NK WIDTH

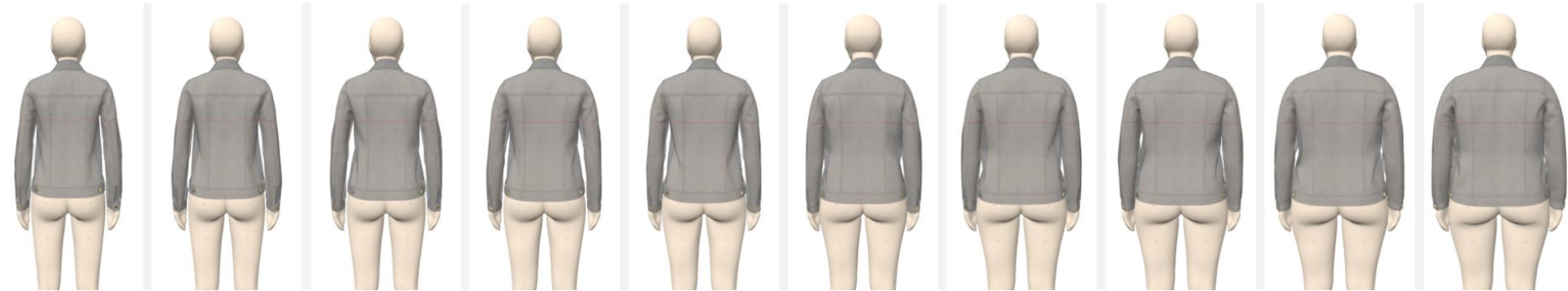
Sizes	dx	dy	dd	<=>
2	-1/16	0	1/16	☑
4	-1/16	0	1/16	☐
6	-1/16	0	1/16	☐
8	-1/16	0	1/16	☐
10	0	0	0	☑
12	1/16	0	1/16	☐
14	1/16	0	1/16	☐
16	1/16	0	1/16	☐
18	1/16	0	1/16	☐
20	1/16	0	1/16	☑



DX : SLV LENGTH FRM CB

Sizes	dx	dy	dd	<=>
2	-1/4	0	1/4	☑
4	-1/4	0	1/4	☐
6	-1/4	0	1/4	☐
8	-1/4	0	1/4	☐
10	0	0	0	☑
12	1/4	0	1/4	☐
14	3/8	0	3/8	☐
16	1/4	0	1/4	☐
18	3/8	0	3/8	☐
20	1/4	0	1/4	☑

Women's - Denim Jacket



M=8-10: XS(2)

S(4)

S(6)

M(8)

M(10)

L(12)

L(14)

XL(16)

XL(18)

XXL(20)

M=10-12: XS(2)

XS(4)

S(6)

S(8)

M(10)

M(12)

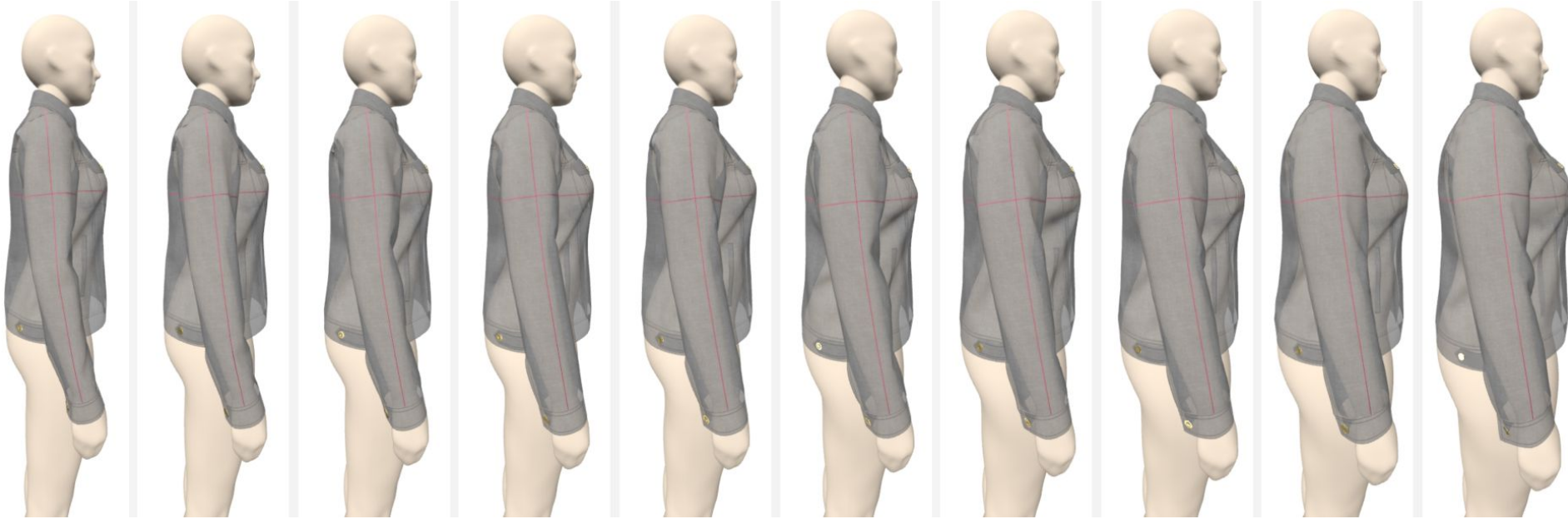
L(14)

L(16)

XL(18)

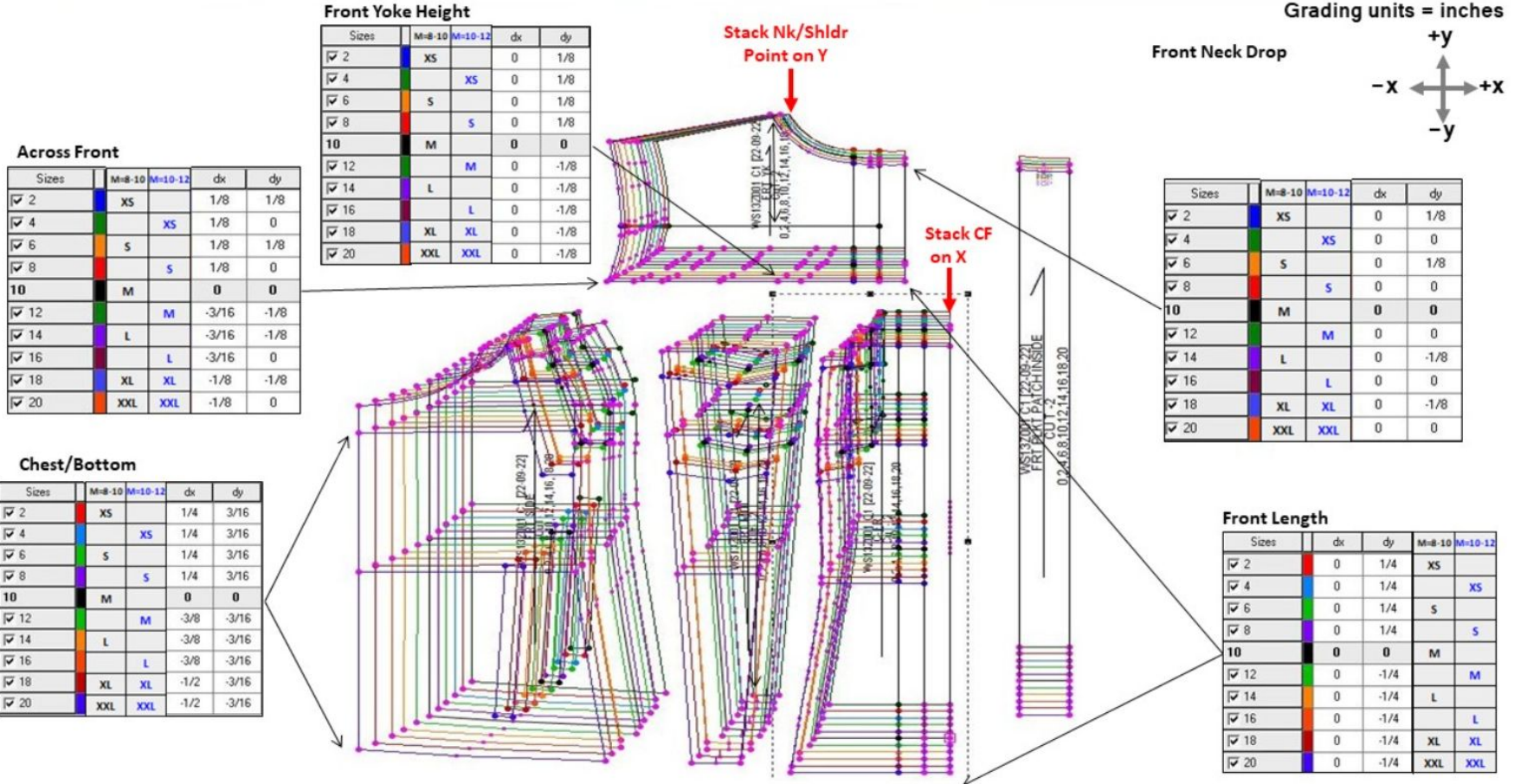
XXL(20)

Women's - Denim Jacket



M=8-10: XS(2)	S(4)	S(6)	M(8)	M(10)	L(12)	L(14)	XL(16)	XL(18)	XXL(20)
M=10-12: XS(2)	XS(4)	S(6)	S(8)	M(10)	M(12)	L(14)	L(16)	XL(18)	XXL(20)

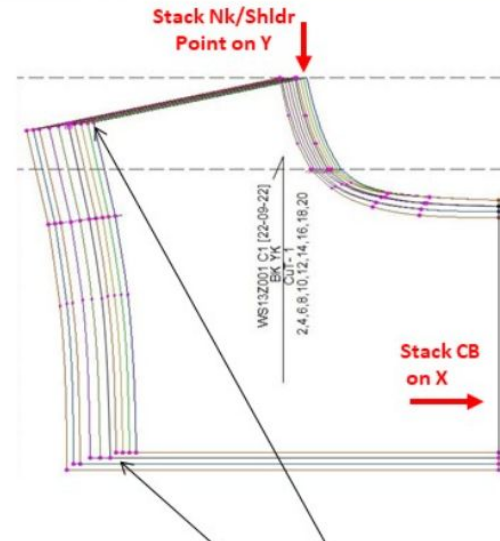
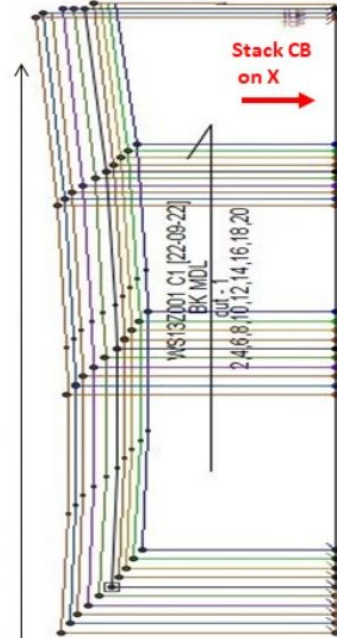
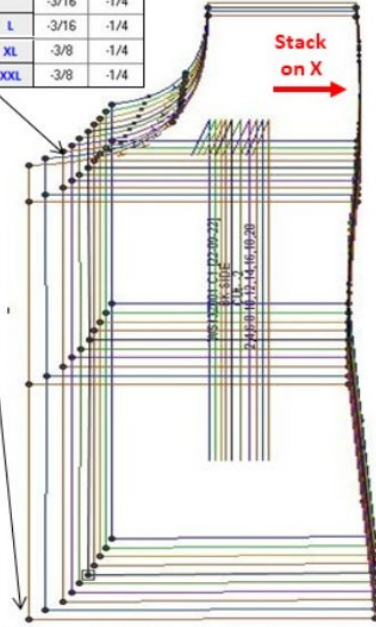
Women's - Denim Jacket



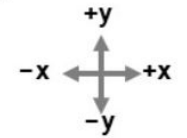
Women's - Denim Jacket

Bk side panel width

Sizes	M=8-10	M=10-12	dx	dy
✓ 2	XS		1/8	1/4
✓ 4		XS	1/8	1/4
✓ 6	S		1/8	1/4
✓ 8		S	1/8	1/4
10	M		0	0
✓ 12		M	-3/16	-1/4
✓ 14	L		-3/16	-1/4
✓ 16		L	-3/16	-1/4
✓ 18	XL	XL	-3/8	-1/4
✓ 20	XXL	XXL	-3/8	-1/4



Grading units = inches



Back Neck Drop

Sizes	M=8-10	M=10-12	dx	dy
✓ 2	XS		0	0
✓ 4		XS	0	0
✓ 6	S		0	0
✓ 8		S	0	1/8
10	M		0	0
✓ 12		M	0	0
✓ 14	L		0	0
✓ 16		L	0	-1/8
✓ 18	XL	XL	0	0
✓ 20	XXL	XXL	0	-1/8

CB Panel Width

Sizes	M=8-10	M=10-12	dx	dy
✓ 2	XS		1/8	1/4
✓ 4		XS	1/8	1/4
✓ 6	S		1/8	1/4
✓ 8		S	1/8	1/4
10	M		0	0
✓ 12		M	-3/16	-1/4
✓ 14	L		-3/16	-1/4
✓ 16		L	-3/16	-1/4
✓ 18	XL	XL	-1/8	-1/4
✓ 20	XXL	XXL	-1/8	-1/4

Across shoulder/ Back

Sizes	M=8-10	M=10-12	dx	dy
✓ 2	XS		1/8	0
✓ 4		XS	1/8	0
✓ 6	S		1/8	0
✓ 8		S	1/8	0
10	M		0	0
✓ 12		M	-3/16	0
✓ 14	L		-3/16	0
✓ 16		L	-3/16	0
✓ 18	XL	XL	-1/8	0
✓ 20	XXL	XXL	-1/8	0

Women's - Denim Jacket

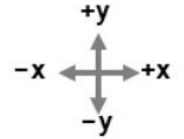
CF Panel Width

Sizes	dx	dy	M=8-10	M=10-12
✓ 2	0	1/4	XS	
✓ 4	-1/8	1/4		XS
✓ 6	-1/32	1/4	S	
✓ 8	-1/8	1/4		S
10	0	0	M	
✓ 12	1/8	-1/4		M
✓ 14	9/32	-1/4	L	
✓ 16	0	-1/4		L
✓ 18	1/4	-1/4	XL	XL
✓ 20	1/32	-1/4	XXL	XXL

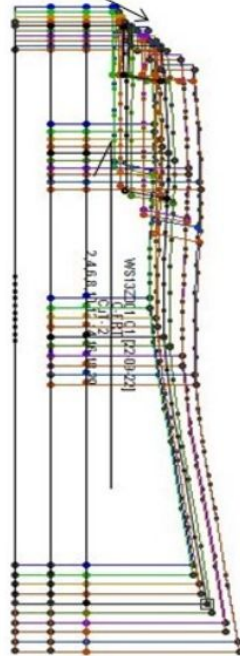
CF Part Width

Sizes	M=8-10	M=10-12	dx	dy
✓ 2	XS		0	1/4
✓ 4		XS	0	1/4
✓ 6	S		3/32	1/4
✓ 8		S	0	1/4
10	M		0	0
✓ 12		M	0	-1/4
✓ 14	L		-3/32	-1/4
✓ 16		L	0	-1/4
✓ 18	XL	XL	0	-1/4
✓ 20	XXL	XXL	-3/32	-1/4

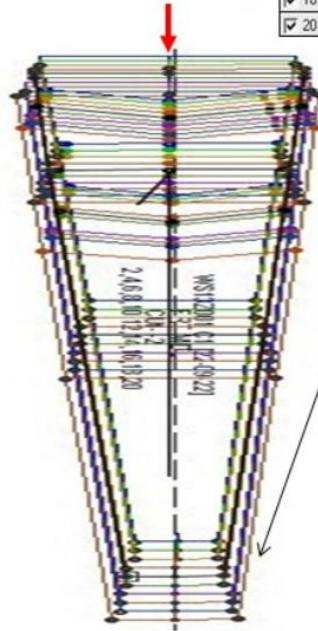
Grading units = inches



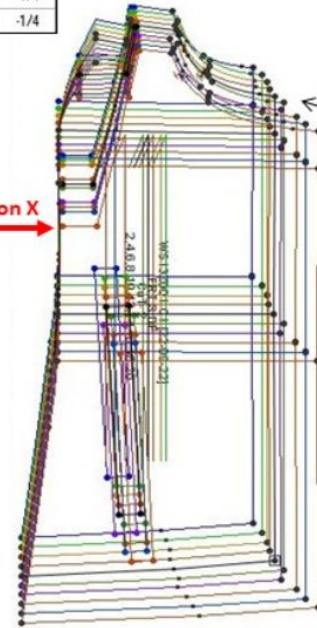
Stack CF
on X



Stack Centre line on Y



Stack on X



Front side panel width

Sizes	M=8-10	M=10-12	dx	dy
✓ 2	XS		-1/4	1/4
✓ 4		XS	-1/8	1/4
✓ 6	S		-1/32	1/4
✓ 8		S	-1/8	1/4
10	M		0	0
✓ 12		M	1/4	-1/4
✓ 14	L		-3/32	-1/4
✓ 16		L	3/8	-1/4
✓ 18	XL	XL	1/4	-1/4
✓ 20	XXL	XXL	9/32	-1/4

Women's - Denim Jacket

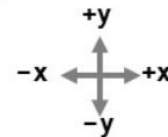
Collar Length

Sizes	M=8-10	M=10-12	dx	dy
✓ 2	XS		3/16	0
✓ 4		XS	1/8	0
✓ 6	S		3/16	0
✓ 8		S	1/8	0
10	M		0	0
✓ 12		M	-1/8	0
✓ 14	L		-3/16	0
✓ 16		L	-3/16	0
✓ 18	XL	XL	-3/16	0
✓ 20	XXL	XXL	-1/8	0

Band Length

Sizes	M=8-10	M=10-12	dx	dy
✓ 2	XS		1/16	0
✓ 4		XS	1/16	0
✓ 6	S		1/16	0
✓ 8		S	3/32	0
10	M		0	0
✓ 12		M	-1/16	0
✓ 14	L		-1/16	0
✓ 16		L	-1/8	0
✓ 18	XL	XL	-1/16	0
✓ 20	XXL	XXL	-1/8	0

Grading units = inches



Stack @ CB on X, Y ↓

WS13Z001 C1 [22-09-22]
@CLR RDY
2, 4, 6, 8, 10, 12, 14, 16, 18, 20

Stack @ CB on X, Y ↓

WS13Z001 C1 [22-09-22]
@BAND RDY
2, 4, 6, 8, 10, 12, 14, 16, 18, 20

Pocket / Flap width

Sizes	M=8-10	M=10-12	dx	dy
✓ 2	XS		0	0
✓ 4		XS	0	0
✓ 6	S		1/8	0
✓ 8		S	0	0
10	M		0	0
✓ 12		M	0	0
✓ 14	L		-1/8	0
✓ 16		L	0	0
✓ 18	XL	XL	0	0
✓ 20	XXL	XXL	-1/8	0

WS13Z001 C1
flap rdy
2, 4, 6, 8, 10, 12, 14,

Stack @ center &
top edge on X, Y

WS13Z001 C1 [22-09-22]
@C PKT RDY
2, 4, 6, 8, 10, 12, 14, 16, 18, 20

Pocket Length

Sizes	M=8-10	M=10-12	dx	dy
✓ 2	XS		0	0
✓ 4		XS	0	0
✓ 6	S		0	1/4
✓ 8		S	0	0
10	M		0	0
✓ 12		M	0	0
✓ 14	L		0	-1/4
✓ 16		L	0	0
✓ 18	XL	XL	0	0
✓ 20	XXL	XXL	0	-1/4

Women's - Denim Jacket

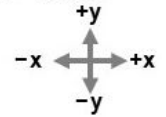
Slv Cap Ht/Slv upperarm

Sizes	M=8-10	M=10-12	dx	dy
✓ 2	XS		-1/8	-1/4
✓ 4		XS	-1/8	-1/8
✓ 6	S		-1/8	-1/4
✓ 8		S	-1/8	-1/8
10	M		0	0
✓ 12		M	1/8	1/4
✓ 14	L		1/8	1/4
✓ 16		L	1/8	1/4
✓ 18	XL	XL	1/8	3/8
✓ 20	XXL	XXL	0	1/2

Elbow

Sizes	M=8-10	M=10-12	dx	dy
✓ 2	XS		-1/8	-1/4
✓ 4		XS	0	-1/8
✓ 6	S		-1/8	-1/4
✓ 8		S	0	-1/8
10	M		0	0
✓ 12		M	1/16	1/4
✓ 14	L		1/16	1/4
✓ 16		L	-1/16	1/4
✓ 18	XL	XL	1/8	3/8
✓ 20	XXL	XXL	0	3/8

Grading units = inches



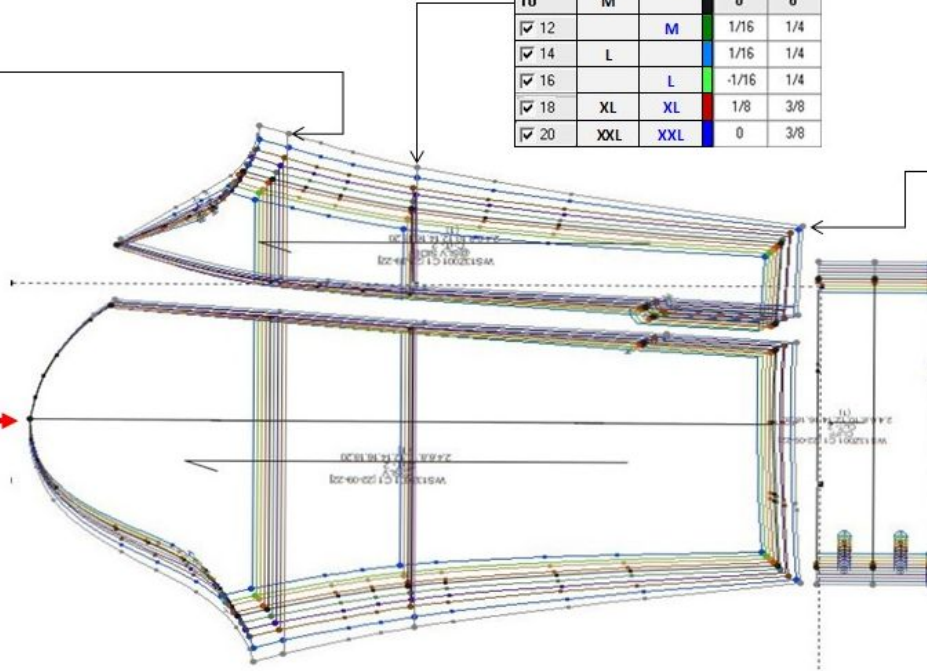
Slv Length/Slv Opening

Sizes	M=8-10	M=10-12	dx	dy
✓ 2	XS		-1/8	-1/8
✓ 4		XS	-1/8	-1/8
✓ 6	S		-1/8	-1/8
✓ 8		S	-1/8	-1/8
10	M		0	0
✓ 12		M	1/16	1/8
✓ 14	L		3/16	1/8
✓ 16		L	1/16	1/8
✓ 18	XL	XL	1/4	1/8
✓ 20	XXL	XXL	1/8	1/8

Slv Opening

Sizes	M=8-10	M=10-12	dx	dy
✓ 2	XS		0	-1/8
✓ 4		XS	0	-1/8
✓ 6	S		0	-1/8
✓ 8		S	0	-1/8
10	M		0	0
✓ 12		M	0	1/8
✓ 14	L		0	1/8
✓ 16		L	0	1/8
✓ 18	XL	XL	0	1/8
✓ 20	XXL	XXL	0	1/8

Stack on shldr Pt
Both X & Y

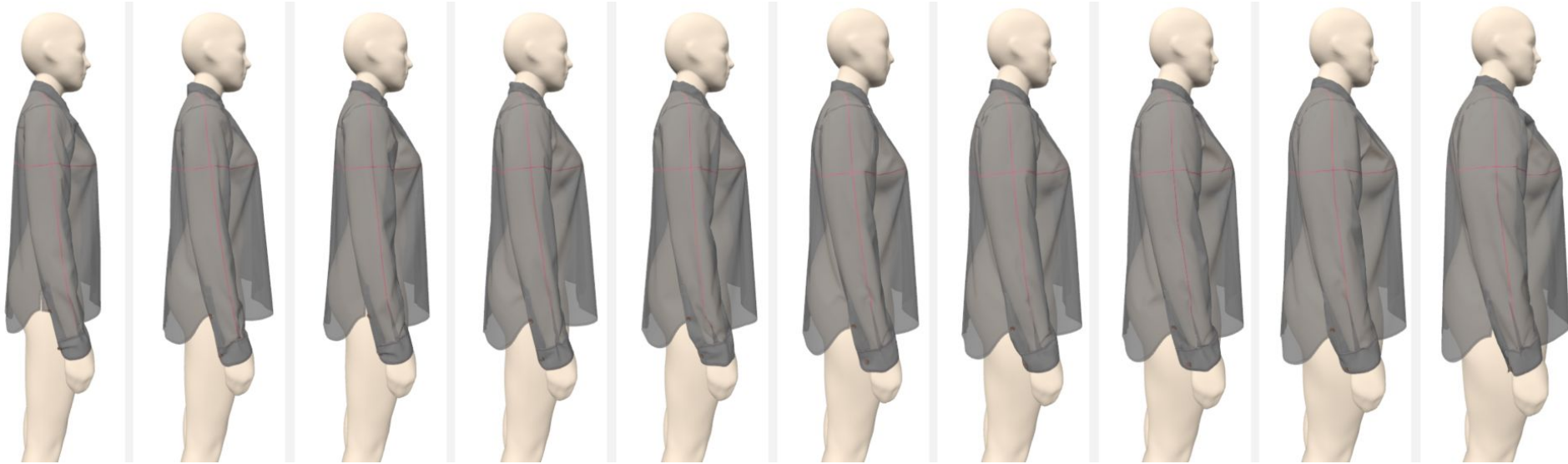


Women's - Woven Shirt



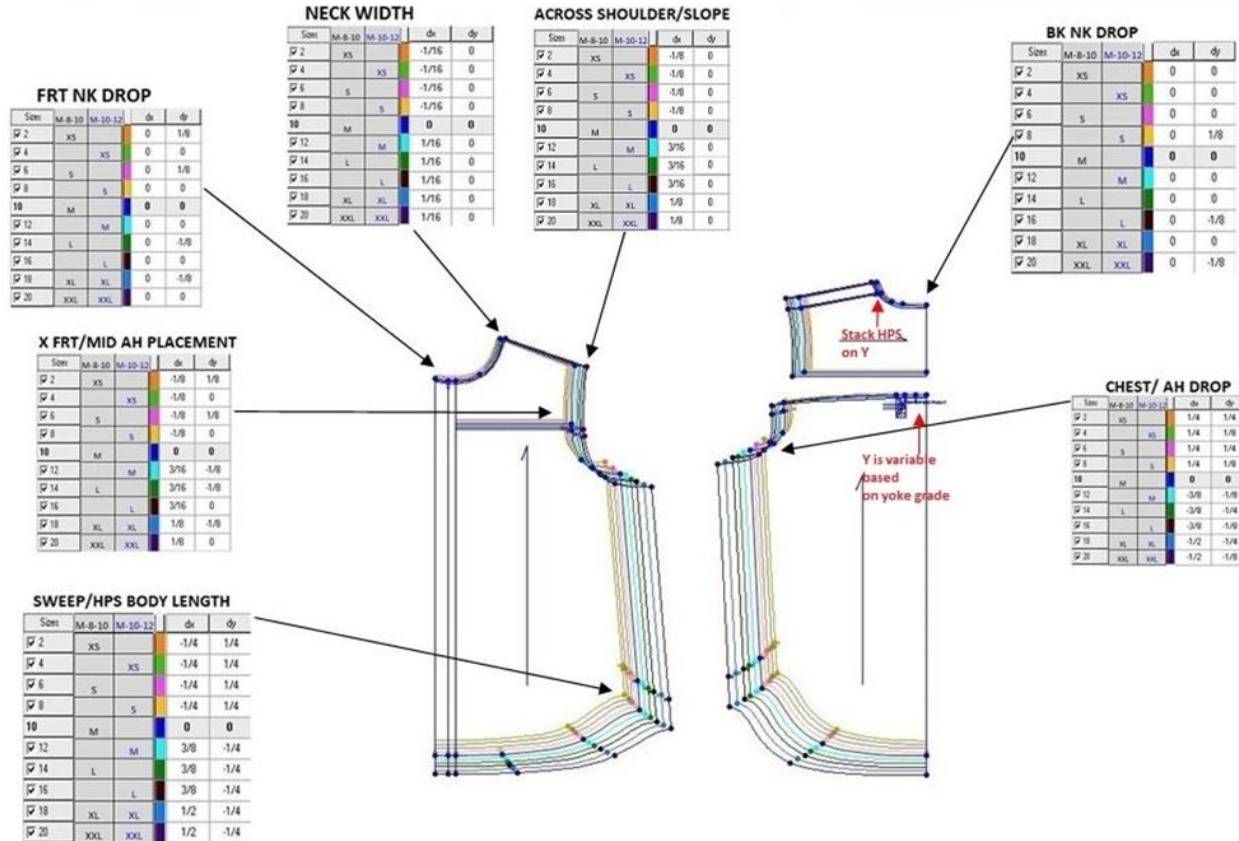
M=8-10: XS(2)	S(4)	S(6)	M(8)	M(10)	L(12)	L(14)	XL(16)	XL(18)	XXL(20)
M=10-12: XS(2)	XS(4)	S(6)	S(8)	M(10)	M(12)	L(14)	L(16)	XL(18)	XXL(20)

Women's - Woven Shirt



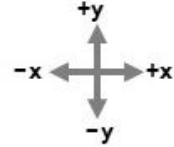
M=8-10: XS(2)	S(4)	S(6)	M(8)	M(10)	L(12)	L(14)	XL(16)	XL(18)	XXL(20)
M=10-12: XS(2)	XS(4)	S(6)	S(8)	M(10)	M(12)	L(14)	L(16)	XL(18)	XXL(20)

Women's - Woven Shirt

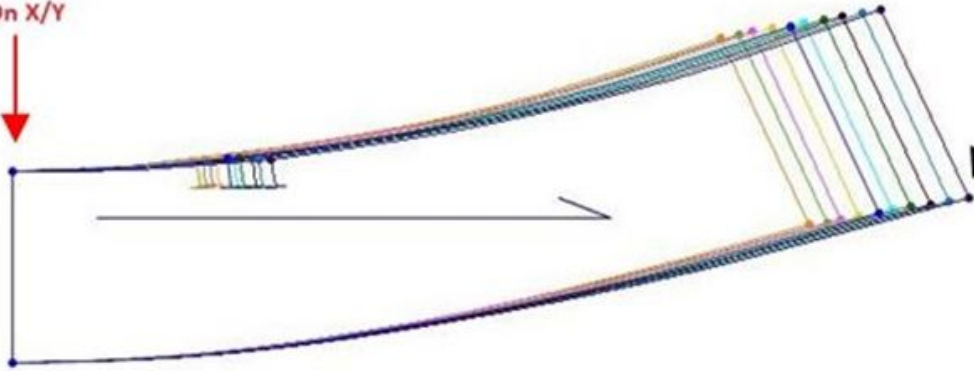


Women's - Woven Shirt

Grading units = inches



Stack CB
On X/Y



Collar Top Edge

Size	M-8-10	M-10-12	dx	dy
2	XS		-3/16	0
4		XS	-1/8	0
6	S		-3/16	0
8		S	-3/16	0
10	M		0	0
12		M	1/8	0
14	L		3/16	0
16		L	3/16	0
18	XL	XL	3/16	0
20	XXL	XXL	3/16	0

Stack CB
On X/Y

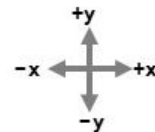


Neck Opening

Size	M-8-10	M-10-12	dx	dy
2	XS		-3/16	0
4		XS	-1/8	0
6	S		-3/16	0
8		S	-3/16	0
10	M		0	0
12		M	1/8	0
14	L		3/16	0
16		L	3/16	0
18	XL	XL	3/16	0
20	XXL	XXL	3/16	0

Women's - Woven Shirt

Grading units = inches



Slv Cap Height/Slv Upper arm

Sizes	M-8-10	M-10-12	dx	dy
✓ 2	XS		-1/8	-1/4
✓ 4		XS	-1/8	-1/8
✓ 6	S		-1/8	-1/4
✓ 8		S	-1/8	-1/8
10	M		0	0
✓ 12		M	1/8	1/4
✓ 14	L		1/8	1/4
✓ 16		L	1/8	1/4
✓ 18	XL	XL	1/8	3/8
✓ 20	XXL	XXL	0	1/2

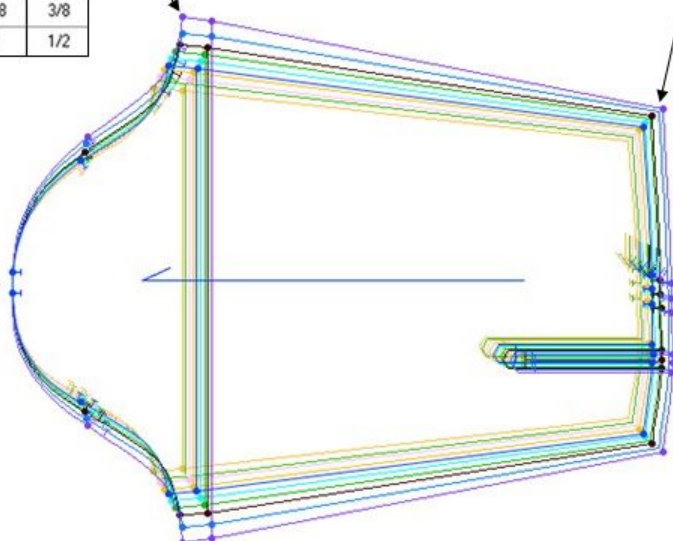
Split CB Length/Slv Opening

Sizes	M-8-10	M-10-12	dx	dy
✓ 2	XS		-1/8	-1/8
✓ 4		XS	-1/8	-1/8
✓ 6	S		-1/8	-1/8
✓ 8		S	-1/8	-1/8
10	M		0	0
✓ 12		M	1/16	1/8
✓ 14	L		3/16	1/8
✓ 16		L	1/16	1/8
✓ 18	XL	XL	1/4	1/8
✓ 20	XXL	XXL	1/8	1/8

Slv Opening

Sizes	M-8-10	M-10-12	dx	dy
✓ 2	XS		0	-1/8
✓ 4		XS	0	-1/8
✓ 6	S		0	-1/8
✓ 8		S	0	-1/8
10	M		0	0
✓ 12		M	0	1/8
✓ 14	L		0	1/8
✓ 16		L	0	1/8
✓ 18	XL	XL	0	1/8
✓ 20	XXL	XXL	0	1/8

Stack centerline of Sleeve on X/Y



Women's - Knit Jogger



M=8-10: XS(2)	S(4)	S(6)	M(8)	M(10)	L(12)	L(14)	XL(16)	XL(18)	XXL(20)
M=10-12: XS(2)	XS(4)	S(6)	S(8)	M(10)	M(12)	L(14)	L(16)	XL(18)	XXL(20)

Women's - Knit Jogger



M=8-10: XS(2) S(4) S(6) M(8) M(10) L(12) L(14) XL(16) XL(18) XXL(20)

M=10-12: XS(4) XS(4) S(6) S(8) M(10) M(12) L(14) L(16) XL(18) XXL(20)

Women's - Knit Jogger



M=8-10: XS(2) S(4) S(6) M(8) M(10) L(12) L(14) XL(16) XL(18) XXL(20)

M=10-12: XS(2) XS(4) S(6) S(8) M(10) M(12) L(14) L(16) XL(18) XXL(20)

Women's - Knit Jogger

HIP/OUTSEAM

Sizes	M-8-10	M-10-12	dx	dy
✓ 2	XS		-1/8	-3/16
✓ 4	XS		-1/8	-3/16
✓ 6	S		-1/8	5/16
✓ 8	S		-1/8	-3/16
10	M		0	0
✓ 12	M		3/16	5/16
✓ 14	L		3/16	-3/16
✓ 16	L		3/16	3/16
✓ 18	XL	XL	1/4	1/4
✓ 20	XXL	XXL	1/4	5/16

WAIST/FT RISE

Sizes	M-8-10	M-10-12	dx	dy
✓ 2	XS		1/8	-3/16
✓ 4	XS		1/8	-3/16
✓ 6	S		1/8	-3/16
✓ 8	S		1/8	-3/16
10	M		0	0
✓ 12	M		-3/16	5/16
✓ 14	L		-3/16	5/16
✓ 16	L		-3/16	3/16
✓ 18	XL	XL	-1/4	1/4
✓ 20	XXL	XXL	-1/4	5/16

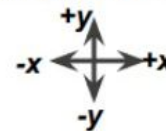
WAIST

Sizes	M-8-10	M-10-12	dx	dy
✓ 2	XS		-1/8	-3/16
✓ 4	XS		-1/8	-3/16
✓ 6	S		-1/8	-3/16
✓ 8	S		-1/8	-3/16
10	M		0	0
✓ 12	M		3/16	5/16
✓ 14	L		3/16	5/16
✓ 16	L		3/16	3/16
✓ 18	XL	XL	1/4	1/4
✓ 20	XXL	XXL	1/4	5/16

WAIST/BK RISE

Sizes	M-8-10	M-10-12	dx	dy
✓ 2	XS		-1/8	-1/8
✓ 4	XS		-1/8	-1/8
✓ 6	S		-1/8	-1/8
✓ 8	S		-1/8	-1/8
10	M		0	0
✓ 12	M		1/8	1/4
✓ 14	L		1/8	1/4
✓ 16	L		3/16	1/8
✓ 18	XL	XL	3/16	1/4
✓ 20	XXL	XXL	3/16	1/4

Grading units = inches



HIP

Sizes	M-8-10	M-10-12	dx	dy
✓ 4	XS		-1/8	-3/16
✓ 6	S		-3/16	5/16
✓ 8	S		-1/8	-3/16
10	M		0	0
✓ 12	M		1/8	5/16
✓ 14	L		3/16	-3/16
✓ 16	L		3/16	3/16
✓ 18	XL	XL	3/16	5/16
✓ 20	XXL	XXL	3/16	5/16

THIGH

Sizes	M-8-10	M-10-12	dx	dy
✓ 2	XS		1/4	0
✓ 4	XS		1/4	0
✓ 6	S		1/4	0
✓ 8	S		1/4	0
10	M		0	0
✓ 12	M		-5/16	0
✓ 14	L		-5/16	0
✓ 16	L		-7/16	0
✓ 18	XL	XL	-3/8	0
✓ 20	XXL	XXL	-3/8	0

THIGH/RISE

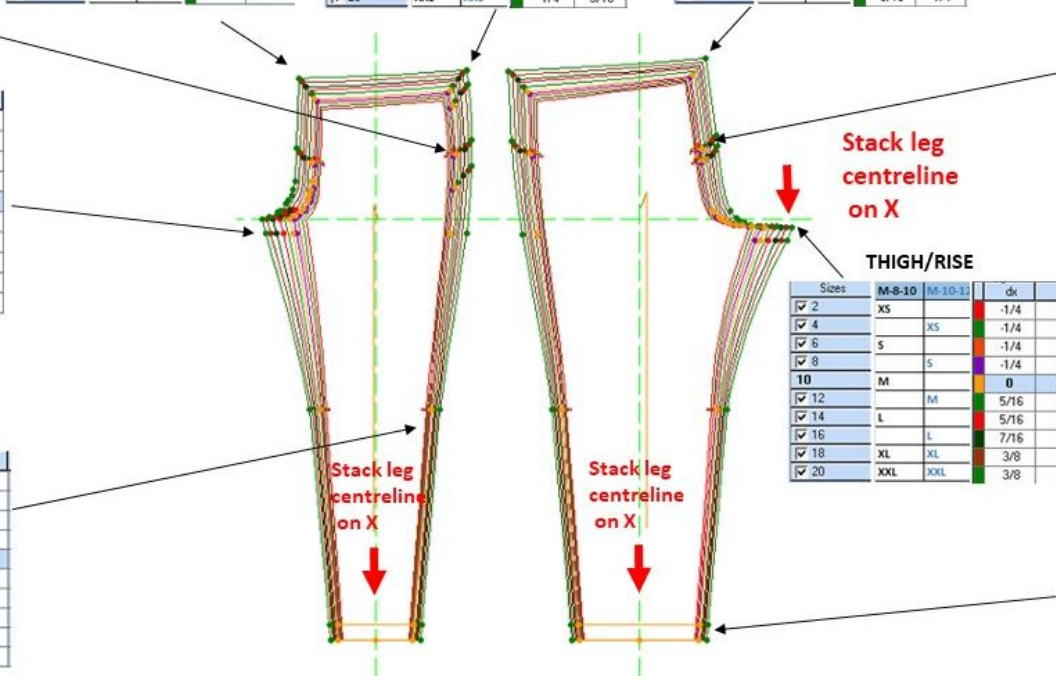
Sizes	M-8-10	M-10-12	dx	dy
✓ 2	XS		-1/4	0
✓ 4	XS		-1/4	0
✓ 6	S		-1/4	0
✓ 8	S		-1/4	0
10	M		0	0
✓ 12	M		5/16	0
✓ 14	L		5/16	0
✓ 16	L		7/16	0
✓ 18	XL	XL	3/8	0
✓ 20	XXL	XXL	3/8	0

KNEE

Sizes	M-8-10	M-10-12	dx	dy
✓ 2	XS		-1/8	0
✓ 4	XS		-1/16	0
✓ 6	S		-1/8	0
✓ 8	S		-1/16	0
10	M		0	0
✓ 12	M		1/8	0
✓ 14	L		1/8	0
✓ 16	L		1/8	0
✓ 18	XL	XL	1/8	0
✓ 20	XXL	XXL	1/8	0

LEG OPENING

Sizes	M-8-10	M-10-12	dx	dy
✓ 2	XS		-1/16	0
✓ 4	XS		-1/16	0
✓ 6	S		-1/16	0
✓ 8	S		-1/16	0
10	M		0	0
✓ 12	M		1/8	0
✓ 14	L		1/16	0
✓ 16	L		1/16	0
✓ 18	XL	XL	1/8	0
✓ 20	XXL	XXL	1/8	0



Women's - Knit Legging No Sideseam



M=8-10: XS(2)

S(4)

S(6)

M(8)

M(10)

L(12)

L(14)

XL(16)

XL(18)

XXL(20)

M=10-12: XS(2)

XS(4)

S(6)

S(8)

M(10)

M(12)

L(14)

L(16)

XL(18)

XXL(20)

Women's - Knit Legging No Sideseam



M=8-10: XS(2)	S(4)	S(6)	M(8)	M(10)	L(12)	L(14)	XL(16)	XL(18)	XXL(20)
M=10-12: XS(2)	XS(4)	S(6)	S(8)	M(10)	M(12)	L(14)	L(16)	XL(18)	XXL(20)

Women's - Knit Legging No Sideseam



M=8-10: XS(2)

S(4)

S(6)

M(8)

M(10)

L(12)

L(14)

XL(16)

XL(18)

XXL(20)

M=10-12: XS(2)

XS(4)

S(6)

S(8)

M(10)

M(12)

L(14)

L(16)

XL(18)

XXL(20)

Women's - Knit Legging No Sideseam

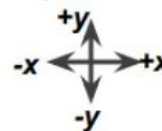
WAIST/FT RISE

Sizes	M-8-10	M-10-12	dx	dy
✓ 2	XS		1/4	-3/16
✓ 4		XS	1/4	-1/8
✓ 6	S		1/4	-1/8
✓ 8		S	1/4	-1/8
10	M		0	0
✓ 12		M	-3/8	1/4
✓ 14	L		-3/8	1/4
✓ 16		L	-3/8	1/8
✓ 18	XL	XL	-1/2	1/4
✓ 20	XXL	XXL	-1/2	1/4

WAIST/BK RISE

Sizes	M-8-10	M-10-12	dx	dy
✓ 2	XS		-1/4	-1/8
✓ 4		XS	-1/4	-1/8
✓ 6	S		-1/4	-1/8
✓ 8		S	-1/4	-1/8
10	M		0	0
✓ 12		M	3/8	1/4
✓ 14	L		3/8	1/4
✓ 16		L	3/8	1/8
✓ 18	XL	XL	1/2	1/4
✓ 20	XXL	XXL	1/2	1/4

Grading units = inches



HIP

Sizes	M-8-10	M-10-12	dx	dy
✓ 2	XS		-1/4	-3/16
✓ 4		XS	-1/4	-1/8
✓ 6	S		-1/4	3/8
✓ 8		S	-1/4	-1/8
10	M		0	0
✓ 12		M	3/8	1/4
✓ 14	L		3/8	-1/4
✓ 16		L	3/8	1/8
✓ 18	XL	XL	1/2	1/4
✓ 20	XXL	XXL	1/2	1/4

THIGH

Sizes	M-8-10	M-10-12	dx	dy
✓ 2	XS		3/8	0
✓ 4		XS	3/8	0
✓ 6	S		3/8	0
✓ 8		S	3/8	0
10	M		0	0
✓ 12		M	-1/2	0
✓ 14	L		-1/2	0
✓ 16		L	-5/8	0
✓ 18	XL	XL	-5/8	0
✓ 20	XXL	XXL	-5/8	0

Stack leg
centreline
on X

THIGH/RISE

Sizes	M-8-10	M-10-12	dx	dy
✓ 2	XS		-3/8	0
✓ 4		XS	-3/8	0
✓ 6	S		-3/8	0
✓ 8		S	-7/16	0
10	M		0	0
✓ 12		M	1/2	0
✓ 14	L		1/2	0
✓ 16		L	11/16	0
✓ 18	XL	XL	11/16	0
✓ 20	XXL	XXL	11/16	0

Stack leg
centreline
on X

KNEE

Sizes	M-8-10	M-10-12	dx	dy
✓ 2	XS		-1/4	0
✓ 4		XS	-3/16	0
✓ 6	S		-1/4	0
✓ 8		S	-3/16	0
10	M		0	0
✓ 12		M	5/16	0
✓ 14	L		5/16	0
✓ 16		L	3/8	0
✓ 18	XL	XL	3/8	0
✓ 20	XXL	XXL	5/16	0

LEG OPENING

Sizes	M-8-10	M-10-12	dx	dy
✓ 2	XS		-1/8	0
✓ 4		XS	-1/8	0
✓ 6	S		-1/8	0
✓ 8		S	-1/8	0
10	M		0	0
✓ 12		M	1/8	0
✓ 14	L		1/4	0
✓ 16		L	1/8	0
✓ 18	XL	XL	1/4	0
✓ 20	XXL	XXL	1/4	0

Women's - Knit Legging: Flare



M=8-10: XS(2)	S(4)	S(6)	M(8)	M(10)	L(12)	L(14)	XL(16)	XL(18)	XXL(20)
M=10-12: XS(2)	XS(4)	S(6)	S(8)	M(10)	M(12)	L(14)	L(16)	XL(18)	XXL(20)

Women's - Knit Legging: Flare



M=8-10: XS(2) S(4) S(6) M(8) M(10) L(12) L(14) XL(16) XL(18) XXL(20)

M=10-12: XS(2) XS(4) S(6) S(8) M(10) M(12) L(14) L(16) XL(18) XXL(20)

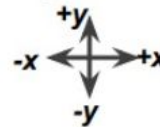
Women's - Knit Legging: Flare



M=8-10: XS(2)	S(4)	S(6)	M(8)	M(10)	L(12)	L(14)	XL(16)	XL(18)	XXL(20)
M=10-12: XS(2)	XS(4)	S(6)	S(8)	M(10)	M(12)	L(14)	L(16)	XL(18)	XXL(20)

Women's - Knit Legging: Flare

Grading units = inches



HIP/OUTSEAM

Sizes	M-8-10	M-10-12	dx	dy
✓ 2	XS		-1/8	-3/16
✓ 4	XS	XS	-1/8	-3/16
✓ 6	S		-1/8	3/8
✓ 8	S	S	-1/8	-1/8
10	M		0	0
✓ 12		M	3/16	1/4
✓ 14	L		3/16	-1/4
✓ 16	L	L	3/16	1/8
✓ 18	XL	XL	1/4	1/4
✓ 20	XXL	XXL	1/4	1/4

WAIST/FT RISE

Sizes	M-8-10	M-10-12	dx	dy
✓ 2	XS		1/8	-3/16
✓ 4	XS	XS	1/8	-3/16
✓ 6	S		1/8	-1/8
✓ 8	S	S	1/8	-1/8
10	M		0	0
✓ 12		M	-3/16	1/4
✓ 14	L		-3/16	1/4
✓ 16	L	L	-3/16	1/8
✓ 18	XL	XL	-1/4	1/4
✓ 20	XXL	XXL	-1/4	1/4

WAIST

Sizes	M-8-10	M-10-12	dx	dy
✓ 2	XS		-1/8	-3/16
✓ 4	XS	XS	-1/8	-3/16
✓ 6	S		-1/8	-1/8
✓ 8	S	S	-1/8	-1/8
10	M		0	0
✓ 12		M	3/16	1/4
✓ 14	L		3/16	1/4
✓ 16	L	L	3/16	1/8
✓ 18	XL	XL	1/4	1/4
✓ 20	XXL	XXL	1/4	1/4

WAIST/BK RISE

Sizes	M-8-10	M-10-12	dx	dy
✓ 2	XS		-1/8	-1/8
✓ 4	XS	XS	-1/8	-1/8
✓ 6	S		-1/8	-1/8
✓ 8	S	S	-1/8	-1/8
10	M		0	0
✓ 12		M	3/16	1/4
✓ 14	L		3/16	1/4
✓ 16	L	L	3/16	1/8
✓ 18	XL	XL	1/4	1/4
✓ 20	XXL	XXL	1/4	1/4

HIP

Sizes	M-8-10	M-10-12	dx	dy
✓ 2	XS		-1/8	-3/16
✓ 4	XS	XS	-1/8	-3/16
✓ 6	S		-3/16	5/16
✓ 8	S	S	-1/8	-3/16
10	M		0	0
✓ 12		M	3/16	1/4
✓ 14	L		3/16	-1/4
✓ 16	L	L	3/16	1/8
✓ 18	XL	XL	1/4	1/4
✓ 20	XXL	XXL	1/4	1/4

THIGH

Sizes	M-8-10	M-10-12	dx	dy
✓ 2	XS		1/4	0
✓ 4	XS	XS	1/4	0
✓ 6	S		1/4	0
✓ 8	S	S	1/4	0
10	M		0	0
✓ 12		M	-5/16	0
✓ 14	L		-5/16	0
✓ 16	L	L	-7/16	0
✓ 18	XL	XL	-3/8	0
✓ 20	XXL	XXL	-3/8	0

THIGH/RISE

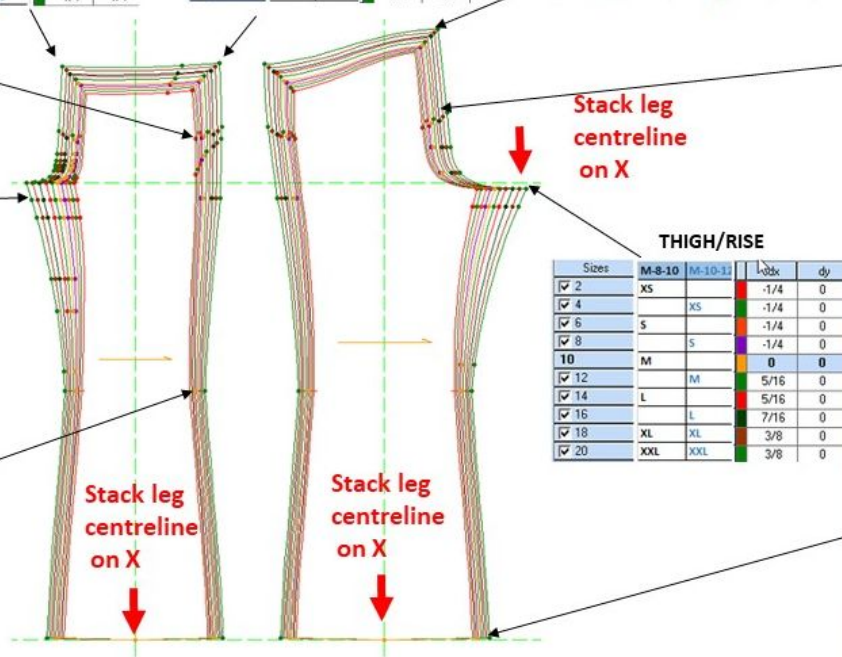
Sizes	M-8-10	M-10-12	dx	dy
✓ 2	XS		-1/4	0
✓ 4	XS	XS	-1/4	0
✓ 6	S		-1/4	0
✓ 8	S	S	-1/4	0
10	M		0	0
✓ 12		M	5/16	0
✓ 14	L		5/16	0
✓ 16	L	L	7/16	0
✓ 18	XL	XL	3/8	0
✓ 20	XXL	XXL	3/8	0

KNEE

Sizes	M-8-10	M-10-12	dx	dy
✓ 2	XS		-1/8	0
✓ 4	XS	XS	-1/16	0
✓ 6	S		-1/8	0
✓ 8	S	S	-1/16	0
10	M		0	0
✓ 12		M	1/8	0
✓ 14	L		1/8	0
✓ 16	L	L	1/8	0
✓ 18	XL	XL	1/8	0
✓ 20	XXL	XXL	1/8	0

LEG OPENING

Sizes	M-8-10	M-10-12	dx	dy
✓ 2	XS		-1/8	0
✓ 4	XS	XS	-1/16	0
✓ 6	S		-1/8	0
✓ 8	S	S	-1/16	0
10	M		0	0
✓ 12		M	1/8	0
✓ 14	L		1/8	0
✓ 16	L	L	1/8	0
✓ 18	XL	XL	1/8	0
✓ 20	XXL	XXL	1/8	0



Women's - Woven Denim Skinny



M=8-10: XS(2)

S(4)

S(6)

M(8)

M(10)

L(12)

L(14)

XL(16)

XL(18)

XXL(20)

M=10-12: XS(2)

XS(4)

S(6)

S(8)

M(10)

M(12)

L(14)

L(16)

XL(18)

XXL(20)

Women's - Woven Denim Skinny



M=8-10: XS(2) S(4) S(6) M(8) M(10) L(12) L(14) XL(16) XL(18) XXL(20)

M=10-12: XS(2) XS(4) S(6) S(8) M(10) M(12) L(14) L(16) XL(18) XXL(20)

Women's - Woven Denim Skinny

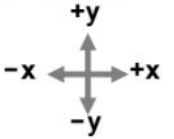


M=8-10: XS(2) S(4) S(6) M(8) M(10) L(12) L(14) XL(16) XL(18) XXL(20)

M=10-12: XS(2) XS(4) S(6) S(8) M(10) M(12) L(14) L(16) XL(18) XXL(20)

Women's - Woven Denim Skinny

Grading units = inches



WAIST/ FRT RISE

Size	WAIST	FRONT RISE	dx	dy
0			1/8	-1/8
2	XS		1/8	-1/8
4	XS		1/8	-1/8
6	S		1/8	-1/8
8	S		1/8	-1/8
10	M		0	0
12	M		-3/16	1/4
14	L		-3/16	1/4
16	L		-3/16	1/4
18	XL		-1/4	1/4
20	XL		-1/4	1/4

WAIST

Size	WAIST	dx	dy
0		-1/8	-1/8
2	XS	-1/8	-1/8
4	XS	-1/8	-1/8
6	S	-1/8	-1/8
8	S	-1/8	-1/8
10	M	0	0
12	M	3/16	1/4
14	L	3/16	1/4
16	L	3/16	1/4
18	XL	1/4	1/4
20	XL	1/4	1/4

WAIST/ BK RISE

Size	WAIST	BACK RISE	dx	dy
0			-1/8	-1/8
2	XS		-1/8	-1/8
4	XS		-1/8	-1/8
6	S		-1/8	-1/8
8	S		-1/8	-1/8
10	M		0	0
12	M		3/16	1/4
14	L		3/16	1/4
16	L		3/16	1/4
18	XL		1/4	1/4
20	XL		1/4	1/4

HIP

Size	WAIST	BACK RISE	dx	dy
0			-1/8	-3/16
2	XS		-1/8	-1/8
4	XS		-1/8	-3/16
6	S		-1/8	-5/16
8	S		-1/8	-3/16
10	M		0	0
12	M		3/16	1/4
14	L		3/16	-3/16
16	L		3/16	1/4
18	XL		1/4	1/4
20	XL		1/4	1/4

HIP/ OUTSEAM

Size	WAIST	BACK RISE	dx	dy
0			-1/8	-3/16
2	XS		-1/8	-1/8
4	XS		-1/8	-3/16
6	S		-1/8	-5/16
8	S		-1/8	-3/16
10	M		0	0
12	M		3/16	1/4
14	L		3/16	-3/16
16	L		3/16	1/4
18	XL		1/4	1/4
20	XL		1/4	1/4

THIGH/ FRT RISE

Size	WAIST	FRONT RISE	dx	dy
0			1/4	0
2	XS		1/4	0
4	XS		1/4	0
6	S		1/4	0
8	S		1/4	0
10	M		0	0
12	M		5/16	0
14	L		5/16	0
16	L		5/16	0
18	XL		3/8	0
20	XL		3/8	0

KNEE

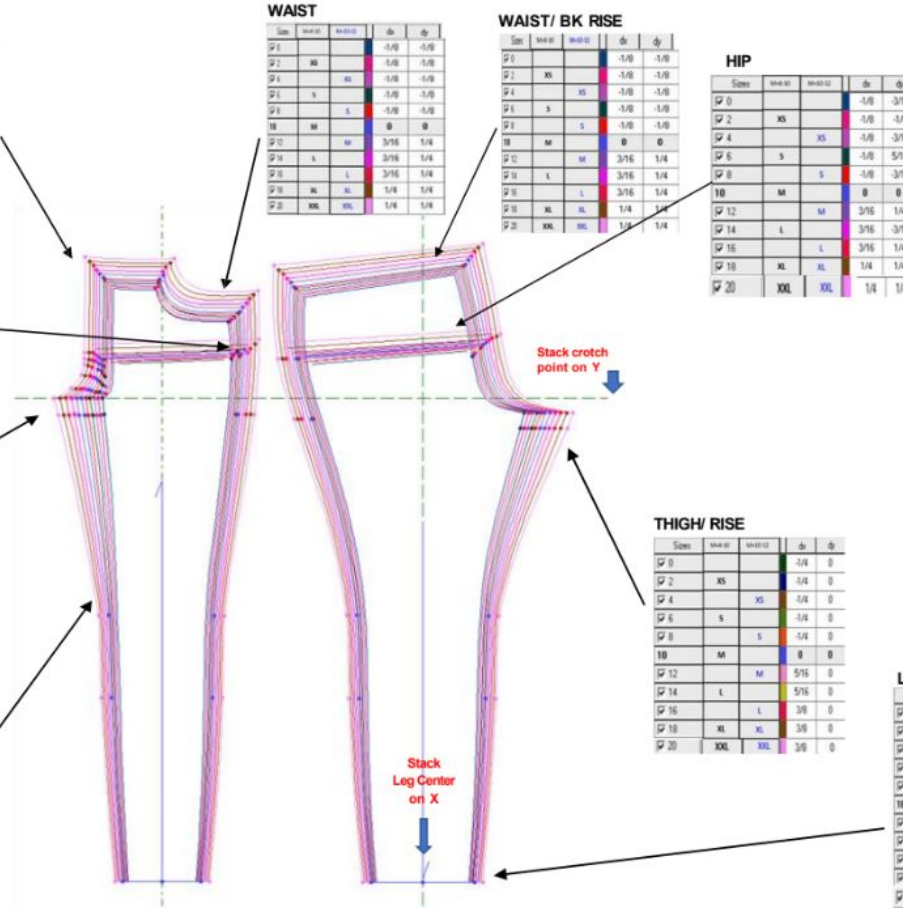
Size	WAIST	FRONT RISE	dx	dy
0			-1/8	0
2	XS		-1/8	0
4	XS		-1/16	0
6	S		-1/8	0
8	S		-1/16	0
10	M		0	0
12	M		1/8	0
14	L		1/8	0
16	L		1/8	0
18	XL		1/8	0
20	XL		1/8	0

THIGH/ RISE

Size	WAIST	FRONT RISE	dx	dy
0			-1/4	0
2	XS		-1/4	0
4	XS		-1/4	0
6	S		-1/4	0
8	S		-1/4	0
10	M		0	0
12	M		5/16	0
14	L		5/16	0
16	L		3/8	0
18	XL		3/8	0
20	XL		3/8	0

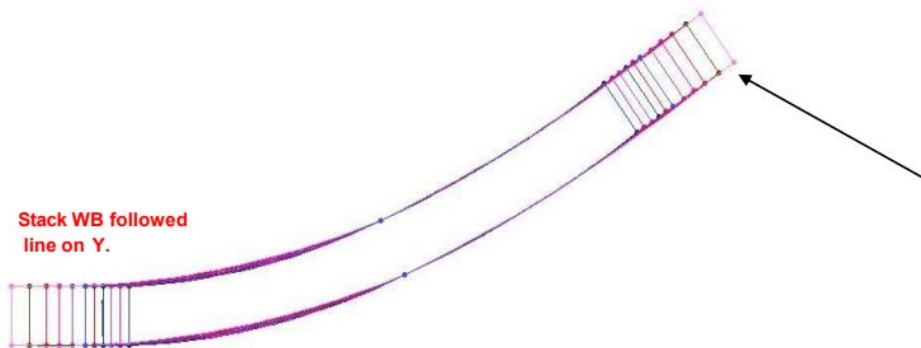
LEG OPENING

Size	WAIST	FRONT RISE	dx	dy
0			-1/16	0
2	XS		-1/16	0
4	XS		-1/16	0
6	S		-1/16	0
8	S		-1/16	0
10	M		0	0
12	M		1/16	0
14	L		1/8	0
16	L		1/16	0
18	XL		1/8	0
20	XL		3/8	0



Women's - Woven Denim Skinny

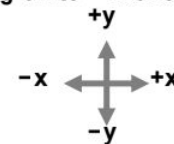
WAISTBAND GRADING



WAIST

Sizes	WA 01	WA 01 12	dx	dy
0			-3/16	-1/8
2	XS		-3/16	-1/8
4		XS	-3/16	-1/8
6	S		-3/16	-1/8
8		S	-3/16	-1/8
10	M		0	0
12		M	5/16	3/16
14	L		5/16	3/16
16		L	5/16	3/16
18	XL	XL	7/16	1/4
20	XXL	XXL	7/16	1/4

Grading units = inches

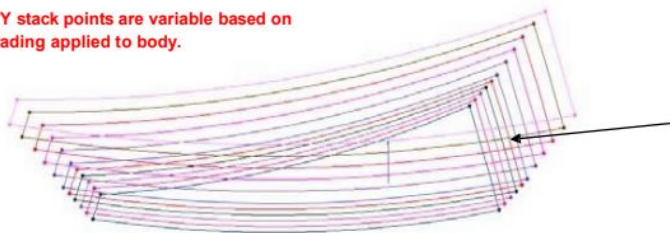


BACK YOKE GRADING

WAIST/OUTSEAM

Sizes	WA 01	WA 01 12	dx	dy
0			1/8	-1/8
2	XS		1/8	-1/8
4		XS	1/8	-1/8
6	S		1/8	-1/8
8		S	1/8	-1/8
10	M		0	0
12		M	-3/16	1/4
14	L		-3/16	1/4
16		L	-3/16	1/4
18	XL	XL	-1/4	1/4
20	XXL	XXL	-1/4	1/4

X/Y stack points are variable based on grading applied to body.



WAIST/BK RISE

Sizes	WA 01	WA 01 12	dx	dy
0			-1/8	-1/8
2	XS		-1/8	-1/8
4		XS	-1/8	-1/8
6	S		-1/8	-1/8
8		S	-1/8	-1/8
10	M		0	0
12		M	3/16	1/4
14	L		3/16	1/4
16		L	3/16	1/4
18	XL	XL	1/4	1/4
20	XXL	XXL	1/4	1/4

Women's - Woven Denim Short



M=8-10: XS(2)

S(4)

S(6)

M(8)

M(10)

L(12)

L(14)

XL(16)

XL(18)

XXL(20)

M=10-12: XS(2)

XS(4)

S(6)

S(8)

M(10)

M(12)

L(14)

L(16)

XL(18)

XXL(20)

Women's - Woven Denim Short



M=8-10: XS(2)

S(4)

S(6)

M(8)

M(10)

L(12)

L(14)

XL(16)

XL(18)

XXL(20)

M=10-12: XS(2)

XS(4)

S(6)

S(8)

M(10)

M(12)

L(14)

L(16)

XL(18)

XXL(20)

Women's - Woven Denim Short

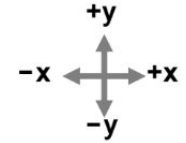


M=8-10: XS(2) S(4) S(6) M(8) M(10) L(12) L(14) XL(16) XL(18) XXL(20)

M=10-12: XS(2) XS(4) S(6) S(8) M(10) M(12) L(14) L(16) XL(18) XXL(20)

Women's - Woven Denim Short

Grading units = inches



HIP/OUTSEAM

Size	MM-B	MM-B+2	dx	dy
0			-1/8	-1/8
2	XS		-1/8	-1/8
4		XS	-1/8	-1/8
6	S		-1/8	-1/8
8		S	-1/8	-1/8
10	M		0	0
12		M	3/16	1/4
14	L		3/16	1/4
16		L	3/16	1/4
18	XL	XL	1/4	1/4
20		XXL	1/4	1/4

WAIST/FRT RISE

Size	MM-B	MM-B+2	dx	dy
0			1/8	-1/8
2	XS		1/8	-1/8
4		XS	1/8	-1/8
6	S		1/8	-1/8
8		S	1/8	-1/8
10	M		0	0
12		M	-3/16	1/4
14	L		-3/16	1/4
16		L	-3/16	1/4
18	XL	XL	-1/4	1/4
20		XXL	-1/4	1/4

WAIST

Size	MM-B	MM-B+2	dx	dy
0			-1/8	-1/8
2	XS		-1/8	-1/8
4		XS	-1/8	-1/8
6	S		-1/8	-1/8
8		S	-1/8	-1/8
10	M		0	0
12		M	3/16	1/4
14	L		3/16	1/4
16		L	3/16	1/4
18	XL	XL	1/4	1/4
20		XXL	1/4	1/4

WAIST/BK RISE

Size	MM-B	MM-B+2	dx	dy
0			-1/8	-1/8
2	XS		-1/8	-1/8
4		XS	-1/8	-1/8
6	S		-1/8	-1/8
8		S	-1/8	-1/8
10	M		0	0
12		M	3/16	1/4
14	L		3/16	1/4
16		L	3/16	1/4
18	XL	XL	1/4	1/4
20		XXL	1/4	1/4

HIP

Size	MM-B	MM-B+2	dx	dy
0			-1/8	-1/8
2	XS		-1/8	-1/8
4		XS	-1/8	-1/8
6	S		-1/8	-1/8
8		S	-1/8	-1/8
10	M		0	0
12		M	3/16	1/4
14	L		3/16	1/4
16		L	3/16	1/4
18	XL	XL	1/4	1/4
20		XXL	1/4	1/4

THIGH/ BK RISE

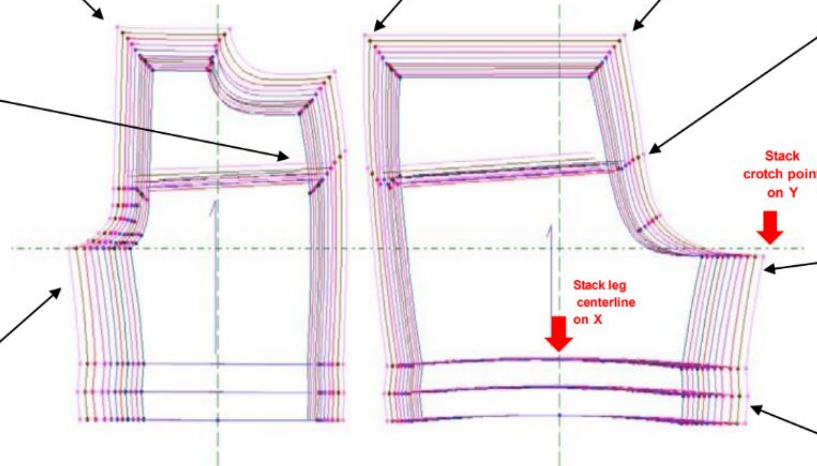
Size	MM-B	MM-B+2	dx	dy
0			-1/4	0
2	XS		-1/4	0
4		XS	-1/4	0
6	S		-1/4	0
8		S	-1/4	0
10	M		0	0
12		M	5/16	0
14	L		5/16	0
16		L	5/16	0
18	XL	XL	3/8	0
20		XXL	3/8	0

THIGH/FRT RISE

Size	MM-B	MM-B+2	dx	dy
0			1/4	0
2	XS		1/4	0
4		XS	1/4	0
6	S		1/4	0
8		S	1/4	0
10	M		0	0
12		M	-5/16	0
14	L		-5/16	0
16		L	-5/16	0
18	XL	XL	-3/8	0
20		XXL	-3/8	0

LEG OPENING

Size	MM-B	MM-B+2	dx	dy
0			-1/4	0
2	XS		-1/4	0
4		XS	-1/4	0
6	S		-1/4	0
8		S	-1/4	0
10	M		0	0
12		M	5/16	0
14	L		5/16	0
16		L	7/16	0
18	XL	XL	3/8	0
20		XXL	3/8	0

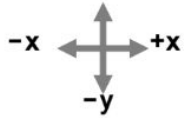


Women's - Woven Denim Short

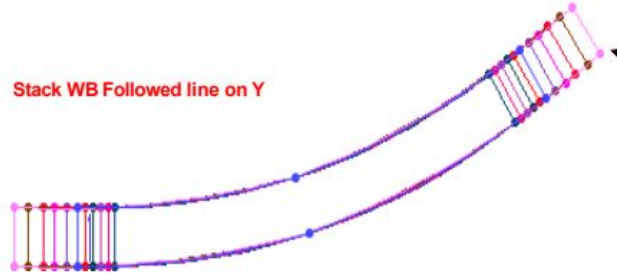
WAISTBAND GRADING

Grading units = inches

+y



Stack WB Followed line on Y



WAIST

Size	MH-01	MH-02	dx	dy
0			-3/16	-1/8
2	XS		-3/16	-1/8
4		XS	-3/16	-1/8
6	S		-3/16	-1/8
8		S	-3/16	-1/8
10	M		0	0
12		M	5/16	3/16
14	L		5/16	3/16
16		L	5/16	3/16
18	XL	XL	7/16	1/4
20	XXL	XXL	7/16	1/4

BACK YOKE GRADING

WAIST/OUTSEAM

Size	MH-01	MH-02	dx	dy
0			1/8	-1/8
2	XS		1/8	-1/8
4		XS	1/8	-1/8
6	S		1/8	-1/8
8		S	1/8	-1/8
10	M		0	0
12		M	-3/16	1/4
14	L		-3/16	1/4
16		L	-3/16	1/4
18	XL	XL	-1/4	1/4
20	XXL	XXL	-1/4	1/4

X/Y stack points are variable based on grading applied to body.



WAIST/BK RISE

Size	MH-01	MH-02	dx	dy
0			-1/8	-1/8
2	XS		-1/8	-1/8
4		XS	-1/8	-1/8
6	S		-1/8	-1/8
8		S	-1/8	-1/8
10	M		0	0
12		M	3/16	1/4
14	L		3/16	1/4
16		L	3/16	1/4
18	XL	XL	1/4	1/4
20	XXL	XXL	1/4	1/4

Women's - Woven Denim Bermuda



M=8-10: XS(2)	S(4)	S(6)	M(8)	M(10)	L(12)	L(14)	XL(16)	XL(18)	XXL(20)
M=10-12: XS(2)	XS(4)	S(6)	S(8)	M(10)	M(12)	L(14)	L(16)	XL(18)	XXL(20)

Women's - Woven Denim Bermuda



M=8-10: XS(2)	S(4)	S(6)	M(8)	M(10)	L(12)	L(14)	XL(16)	XL(18)	XXL(20)
M=10-12: XS(2)	XS(4)	S(6)	S(8)	M(10)	M(12)	L(14)	L(16)	XL(18)	XXL(20)

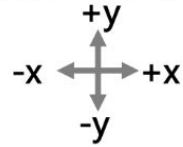
Women's - Woven Denim Bermuda



M=8-10: XS(2)	S(4)	S(6)	M(8)	M(10)	L(12)	L(14)	XL(16)	XL(18)	XXL(20)
M=10-12: XS(2)	XS(4)	S(6)	S(8)	M(10)	M(12)	L(14)	L(16)	XL(18)	XXL(20)

Women's - Woven Denim Bermuda

Grading units = inches



WAIST

Size	MH-10	MH-12	dx	dy
00			-1/8	-1/8
0			-1/8	-1/8
2	XS		-1/8	-1/8
4		XS	-1/8	-1/8
6	S		-1/8	-1/8
8		S	-1/8	-1/8
10	M		0	0
12		M	3/16	1/4
14	L		3/16	1/4
16		L	3/16	1/4
18	XL	XL	1/4	1/4
20	XXL	XXL	1/4	1/4

WAIST/BK RISE

Size	MH-10	MH-12	dx	dy
00			-1/8	-1/8
0			-1/8	-1/8
2	XS		-1/8	-1/8
4		XS	-1/8	-1/8
6	S		-1/8	-1/8
8		S	-1/8	-1/8
10	M		0	0
12		M	3/16	1/4
14	L		3/16	1/4
16		L	3/16	1/4
18	XL	XL	1/4	1/4
20	XXL	XXL	1/4	1/4

WAIST/FRT RISE

Size	MH-10	MH-12	dx	dy
00			1/8	-1/8
0			1/8	-1/8
2	XS		1/8	-1/8
4		XS	1/8	-1/8
6	S		1/8	-1/8
8		S	1/8	-1/8
10	M		0	0
12		M	-3/16	1/4
14	L		-3/16	1/4
16		L	-3/16	1/4
18	XL	XL	-1/4	1/4
20	XXL	XXL	-1/4	1/4

HIP

Size	MH-10	MH-12	dx	dy
00			-1/8	-1/8
0			-1/8	-5/8
2	XS		-1/8	-1/8
4		XS	-1/8	-1/8
6	S		-1/8	3/8
8		S	-1/8	-1/8
10	M		0	0
12		M	3/16	1/4
14	L		3/16	-1/4
16		L	3/16	1/4
18	XL	XL	1/4	1/4
20	XXL	XXL	1/4	1/4

HIP/OUTSEAM

Size	MH-10	MH-12	dx	dy
00			-1/8	-1/8
0			-1/8	-5/8
2	XS		-1/8	-1/8
4		XS	-1/8	-1/8
6	S		-1/8	3/8
8		S	-1/8	-1/8
10	M		0	0
12		M	3/16	1/4
14	L		3/16	-1/4
16		L	3/16	1/4
18	XL	XL	1/4	1/4
20	XXL	XXL	1/4	1/4

THIGH/FRT RISE

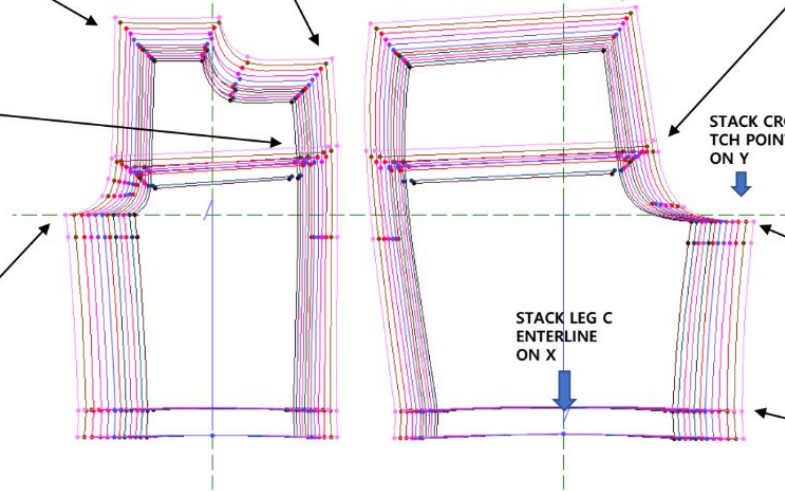
Size	MH-10	MH-12	dx	dy
00			1/4	0
0			1/4	0
2	XS		1/4	0
4		XS	1/4	0
6	S		1/4	0
8		S	1/4	0
10	M		0	0
12		M	-5/16	0
14	L		-5/16	0
16		L	-5/16	0
18	XL	XL	-3/8	0
20	XXL	XXL	-3/8	0

THIGH/RISE

Size	MH-10	MH-12	dx	dy
00			-1/4	0
0			-1/4	0
2	XS		-1/4	0
4		XS	-1/4	0
6	S		-1/4	0
8		S	-1/4	0
10	M		0	0
12		M	5/16	0
14	L		5/16	0
16		L	5/16	0
18	XL	XL	3/8	0
20	XXL	XXL	3/8	0

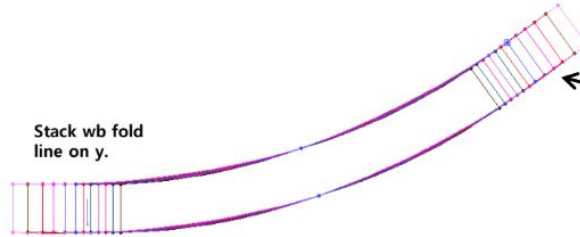
LEG OPENING

Size	MH-10	MH-12	dx	dy
00			-1/4	0
0			-1/4	0
2	XS		-1/4	0
4		XS	-1/4	0
6	S		-1/4	0
8		S	-1/4	0
10	M		0	0
12		M	5/16	0
14	L		5/16	0
16		L	3/8	0
18	XL	XL	5/16	0
20	XXL	XXL	5/16	0



Women's - Woven Denim Bermuda

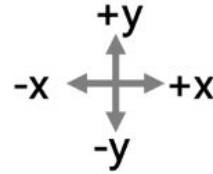
WAISTBAND GRADING.



WAIST

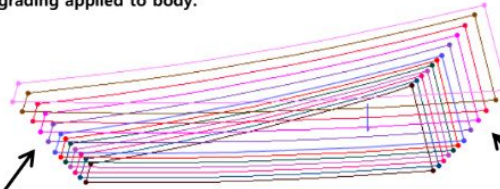
Size	MH-010	MH-012	dx	dy
00			-3/16	-1/8
0			-3/16	-1/8
2	XS		-3/16	-1/8
4		XS	-3/16	-1/8
6	S		-3/16	-1/8
8		S	-3/16	-1/8
10	M		0	0
12		M	5/16	1/4
14	L		5/16	1/4
16		L	5/16	1/4
18	XL	XL	3/8	5/16
20	XXL	XXL	3/8	5/16

Grading units = inches



BACK YOKE GRADING.

X/Y stack points are variable based on grading applied to body.



WAIST/OUTSEAM

Size	MH-010	MH-012	dx	dy
00			1/8	-1/8
0			1/8	-1/8
2	XS		1/8	-1/8
4		XS	1/8	-1/8
6	S		1/8	-1/8
8		S	1/8	-1/8
10	M		0	0
12		M	-3/16	1/4
14	L		-3/16	1/4
16		L	-3/16	1/4
18	XL	XL	-1/4	1/4
20	XXL	XXL	-1/4	1/4

WAIST/BK RISE

Size	MH-010	MH-012	dx	dy
00			-1/8	-1/8
0			-1/8	-1/8
2	XS		-1/8	-1/8
4		XS	-1/8	-1/8
6	S		-1/8	-1/8
8		S	-1/8	-1/8
10	M		0	0
12		M	3/16	1/4
14	L		3/16	1/4
16		L	3/16	1/4
18	XL	XL	1/4	1/4
20	XXL	XXL	1/4	1/4

Women's - Woven Pant w/Back Dart



M=8-10: XS(2)	S(4)	S(6)	M(8)	M(10)	L(12)	L(14)	XL(16)	XL(18)	XXL(20)
M=10-12: XS(2)	XS(4)	S(6)	S(8)	M(10)	M(12)	L(14)	L(16)	XL(18)	XXL(20)

Women's - Woven Pant w/Back Dart



M=8-10: XS(2)	S(4)	S(6)	M(8)	M(10)	L(12)	L(14)	XL(16)	XL(18)	XXL(20)
M=10-12: XS(2)	XS(4)	S(6)	S(8)	M(10)	M(12)	L(14)	L(16)	XL(18)	XXL(20)

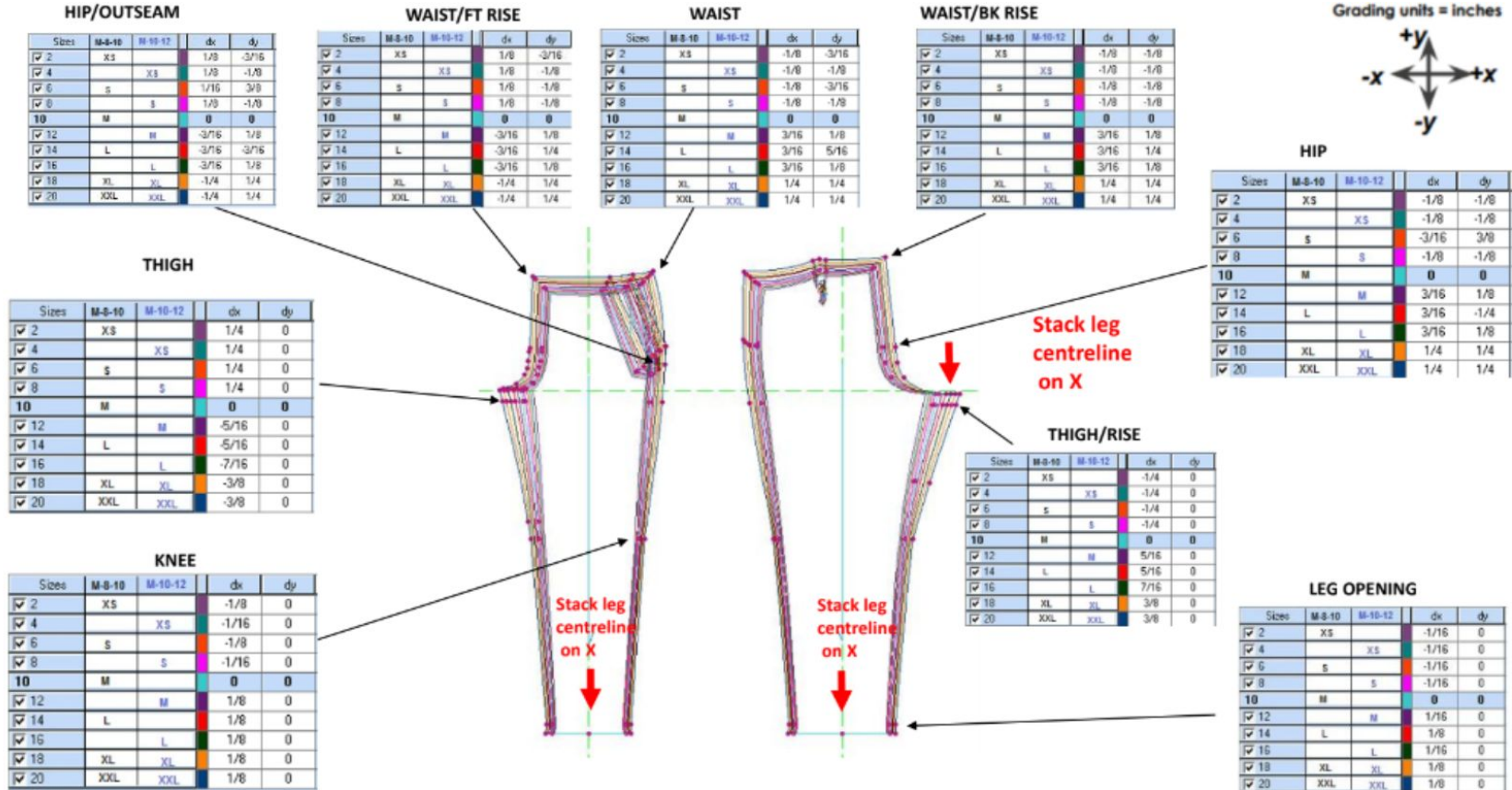
Women's - Woven Pant w/Back Dart



M=8-10: XS(2) S(4) S(6) M(8) M(10) L(12) L(14) XL(16) XL(18) XXL(20)

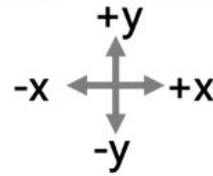
M=10-12: XS(2) XS(4) S(6) S(8) M(10) M(12) L(14) L(16) XL(18) XXL(20)

Women's - Woven Pant w/Back Dart



Women's - Woven Pant w/Back Dart

Grading units = inches



Sizes	M-8-10	M-10-12	dx	dy
2	XS		0	-1/8
4		XS	0	-1/8
6	S		0	-1/8
8		S	0	-1/8
10	M		0	0
12		M	1/16	1/8
14	L		-1/16	1/4
16		L	-1/16	1/8
18	XL	XL	0	1/4
20	XXL	XXL	0	1/4

Sizes	M-8-10	M-10-12	dx	dy
2	XS		-1/8	-1/8
4		XS	-1/8	-1/8
6	S		-1/8	-1/8
8		S	-1/8	-1/8
10	M		0	0
12		M	3/16	1/8
14	L		3/16	1/4
16		L	3/16	1/8
18	XL	XL	1/4	1/4
20	XXL	XXL	1/4	1/4

Sizes	M-8-10	M-10-12	dx	dy
2	XS		1/8	-1/8
4		XS	1/8	-1/8
6	S		1/8	-1/8
8		S	1/8	-1/8
10	M		0	0
12		M	-3/16	1/8
14	L		-3/16	1/4
16		L	-3/16	1/8
18	XL	XL	-1/4	1/4
20	XXL	XXL	-1/4	1/4

Sizes	M-8-10	M-10-12	dx	dy
2	XS		0	-1/8
4		XS	0	-1/8
6	S		0	-1/8
8		S	0	-1/8
10	M		0	0
12		M	-1/16	1/8
14	L		1/16	1/4
16		L	1/16	1/8
18	XL	XL	0	1/4
20	XXL	XXL	0	1/4

Sizes	M-8-10	M-10-12	dx	dy
2	XS		0	0
4		XS	0	0
6	S		0	0
8		S	0	0
10	M		0	0
12		M	1/16	0
14	L		-1/16	1/8
16		L	-1/16	0
18	XL	XL	0	1/8
20	XXL	XXL	-1/16	1/8

Sizes	M-8-10	M-10-12	dx	dy
2	XS		-1/16	-1/8
4		XS	0	-1/8
6	S		1/16	3/8
8		S	0	-1/8
10	M		0	0
12		M	-1/16	1/8
14	L		1/16	-1/4
16		L	1/16	1/8
18	XL	XL	1/16	1/4
20	XXL	XXL	1/16	1/4

